

Go-Kart 150 PGO für 2 Personen



Ersatzteile Liste

Technische Daten

Länge	2.215 mm	Leistung	10 PS / 7,5 KW
Breite	1.365 mm	Zündung	C.D.I. Elektronik
Höhe	1.480 mm	Antriebsart	Kette
Sitzhöhe	700 mm	Getriebe	stufenlose Automatic / mit Rückwärtsgang
Leergewicht	258 kg	Kupplung	Fliehkraft Automatic
Höchstgeschwindigkeit	71 km/h	Starter	Elektrostart
Rahmenbauart	Stahlrohrrahmen	Federung vorne	2 Öldruckstoßdämpfer verstellbar
Motorart	1Zylinder 4-Takt Motor mit Luftkühlung	Federung hinten	2 Öldruckstoßdämpfer verstellbar
Hubraum	150 ccm	Reifengröße	VR 19x7-8 HR 20x7-8
Bohrung		VR – Bremse	2 Scheibenbremsen
Verdichtung		HR – Bremse	zentrale Scheibenbremse
Max. Drehmoment		Schalldämfer	mit Katalysator EURO II

Ausstattung

Scheinwerfer mit Fern- und Abblendlicht 12 V, Blinkanlage,
2 Rückspiegel, 12 Volt Batterie, Tachometer, Zulassung für 2 Person,
Gepäckträger Heck

Sonstiges

Zulassung für den Straßenverkehr (Europazulassung)
Fahrerlaubnis Führerscheinklasse B oder einer Bundesdeutschen (alten,
d.h. vor dem 31.12.1998 erteilten) Fahrerlaubnis der Klasse 2 oder 3 bzw.
einer (älteren) DDR – Fahrerlaubnis der Klasse B oder C.

Die Beschreibungen des Fahrzeuges sind unverbindlich. Konstruktions- und Ausführungsänderungen vorbehalten. Farbabweichungen sind drucktechnisch bedingt.

E1. CRANKCASE

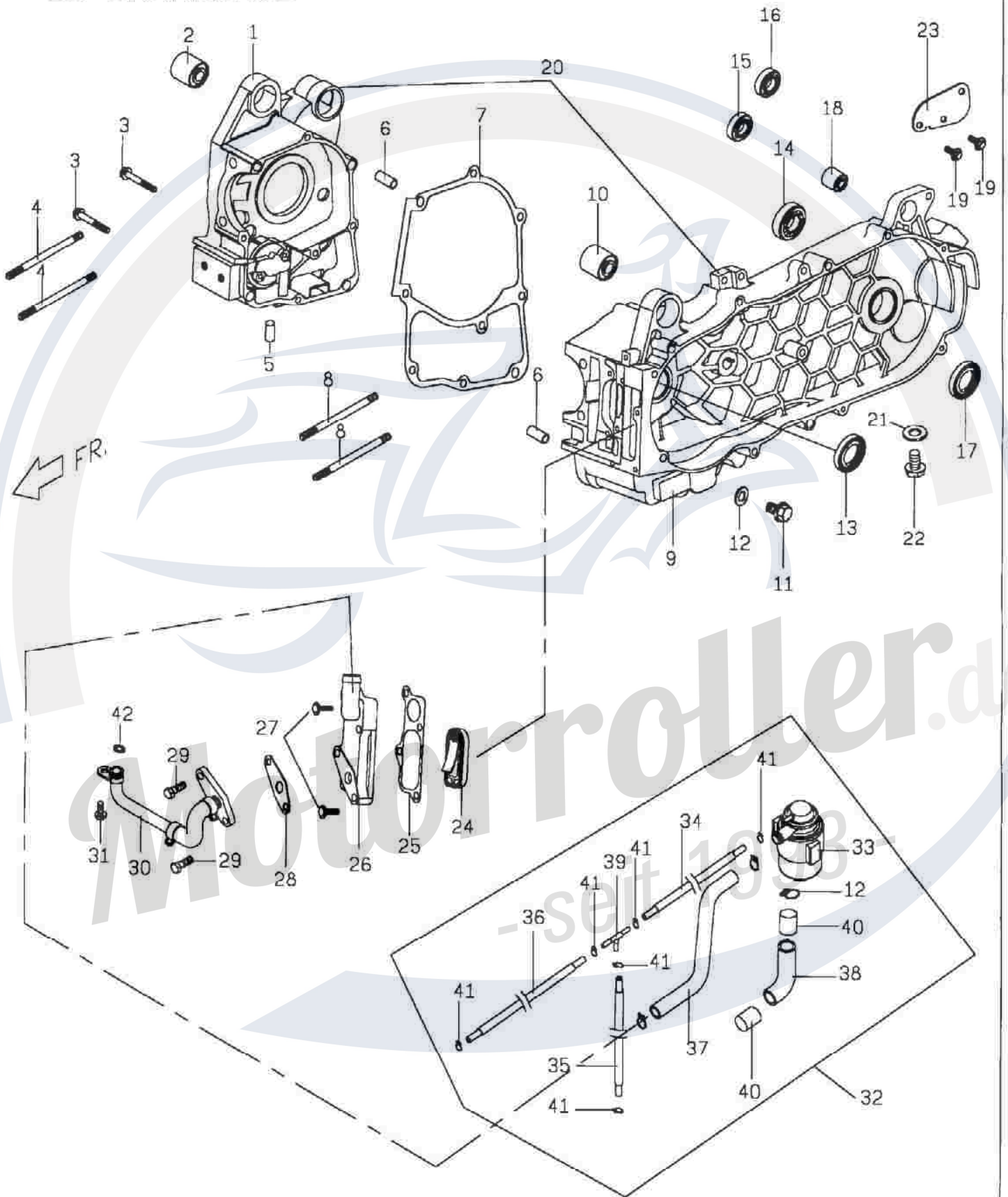


FIG. 1 ENGINE CRANKCASE

REF NO	PARTNO	PART NAME	Q'TY
1	C5061011000	RH CRANKCASE	1
2	E1061020000	RUBBER BUSH	1
3	90190605003	HEXAGON FLANGE BOLT	2
4	90170818800	STUP BOLT	2
5	G1061070000	PLUG OIL	1
6	93540801400	LOCK PIN	2
7	C5061040000	CRANKCASE GASKET	1
8	90170819500	STUD BOLT	2
9	C6062010000	LH.CRANKCASE	1
10	E1061020000	RUBBER BUSH	1
11	90181201500	HEXAGON FLANGE BOLT	1
12	92141200006	PLAIN WASHER	1
13	95572032601	OIL SEAL,TC TYPE	1
14	96510620402	DEEP GROOVE BALL BEARING	1
15	96510620200	DEEP GROOVE BALL BEARING	1
16	96510620301	DEEP GROOVE BALL BEARING	1
17	95572032600	OIL SEAL TC TYPE	1
18	P1062020000	RUBBER BUSH	1
19	90190601601	HEXAGON FLANGE BOLT	2
20	C606K0100001	RH AND LH CRANKCASE ASSY.	1
21	92140800001	PLAIN WASHER	1
22	90190801200	HEXAGON FLANGE BOLT	1
23	C2706010000	FIXING PLATE, AIR CLEANER	1
24	C5286010000	SECOND AIR REED VALVE COMP	1
25	C1286160000	GASKET SECOND AIR COVER	1
26	C5286060000	COVER,SECOND AIR	1
27	90190602700	HEXAGON FLANGE BOLT	2
28	C1286190000	GASKET,TUBE	1
29	90190603502	HEXAGON FLANGE BOLT	2
30	C3286201000	TUBE COMP	1
31	90190601203	HEXAGON FLANGE BOLT	1
32	B5286300000	AIAC COMP.	1
33	P62862100001	AIAC ASSY.	1
34	B5286240000	VACUUM PIPE (A)	1
35	B5286250000	VACUUM PIPE (B)	1
36	B5286260000	VACUUM PIPE (C)	1
37	B5286270000	TUBE (A)	1
38	P6286270000	TUBE (B)	1
39	C1286290000	THREE WAY, PIPE	1
40	C1286310000	ISOLATION	2
41	92200700000	HOSE CLAMP	6
42	95511000001	O RING	1

E2. BR150_ OIL COOLER & LH COVER

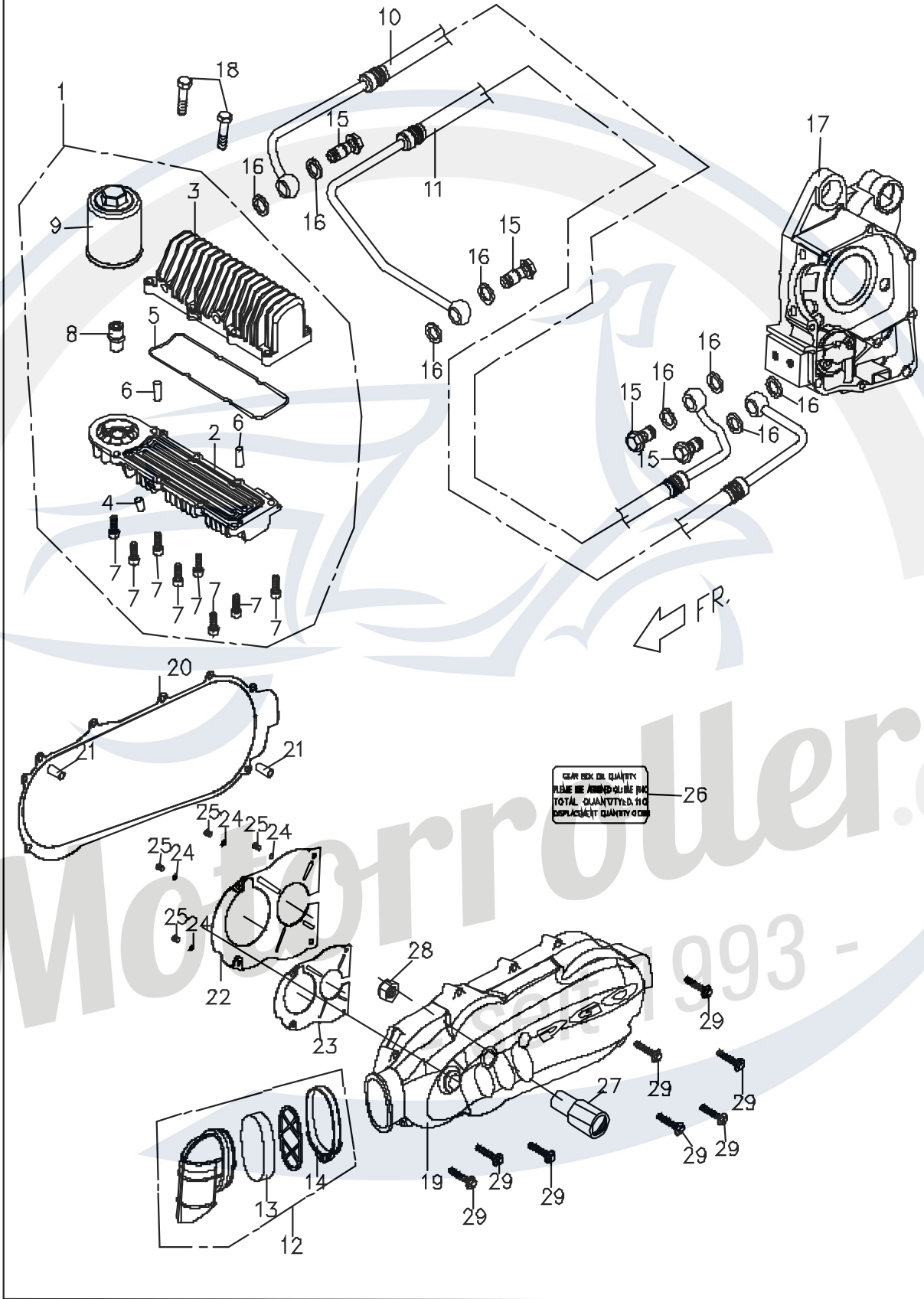


FIG. 2 ENGINE OIL COOLER

REF NO	PARTNO	PART NAME	Q'TY
1	C5083010000	OIL COOLER ASSY.	1
2	C5083020000	RADIATOR, UPPER	1
3	C5083030000	RADIATOR, LOWER	1
4	G1067010000	OIL PLUG	1
5	C5083040000	OIL SEAL	1
6	93560401000	LOCK PIN	2
7	90210601800	HEXAGON SOCKET HD. CAP SCREW	8
8	C5083080000	OIL FILTER JOINT	1
9	C1082020000	OIL FILTER	1
10	B5083050000	OIL COOLER PIPE(1)	1
11	B5083060000	OIL COOLER PIPE(2)	1
12	C1063102000	BREATHER PIPE COMP	1
13	C1063092000	SPONGE,BREATHER PIPE	1
14	C1706280000	CLAMP	1
15	C5083070000	OIL PASS BOLT	4
16	92141200006	PLAIN WASHER	8
17	C5061011000	RH CRANKCASE	1
18	90190807500	HEXAGON FLANGE BOLT	2
19	C2063011720	LH SIDE COVER	1
20	C2063020000	GASKET LEFT COVER	1
21	93540801400	LOCK PIN	2
22	C20630600001	PARTITION PLATE	1
23	C2063121000	PACKING, PARTITION PLATE	1
24	92110500000	SPRING WASHER	4
25	90050500900	C-R ROUND HD. TAPPING SCREW	4
26	C16031400001	GEAR OIL NOTICE LABEL(ENGLISH)	1
27	B5281060000	AXLE, FIXING MUFFLER	1
28	92061400000	U NUT	1
29	90190604001	HEXAGON FLANGE BOLT	8

Motorroller.de
- seit 1993 -

E3. CYLINDER HEAD . CYLINDER HEAD COVER

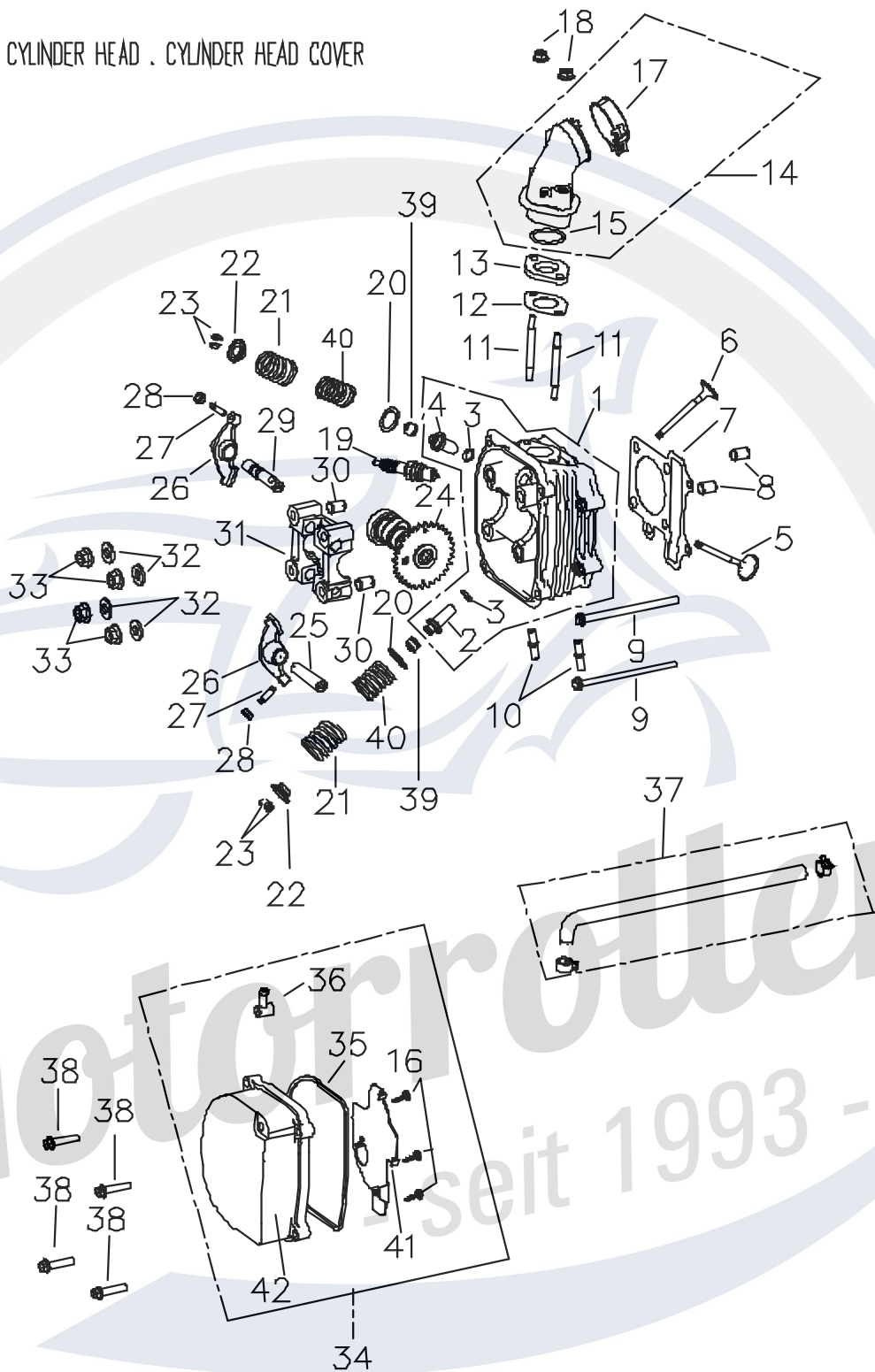
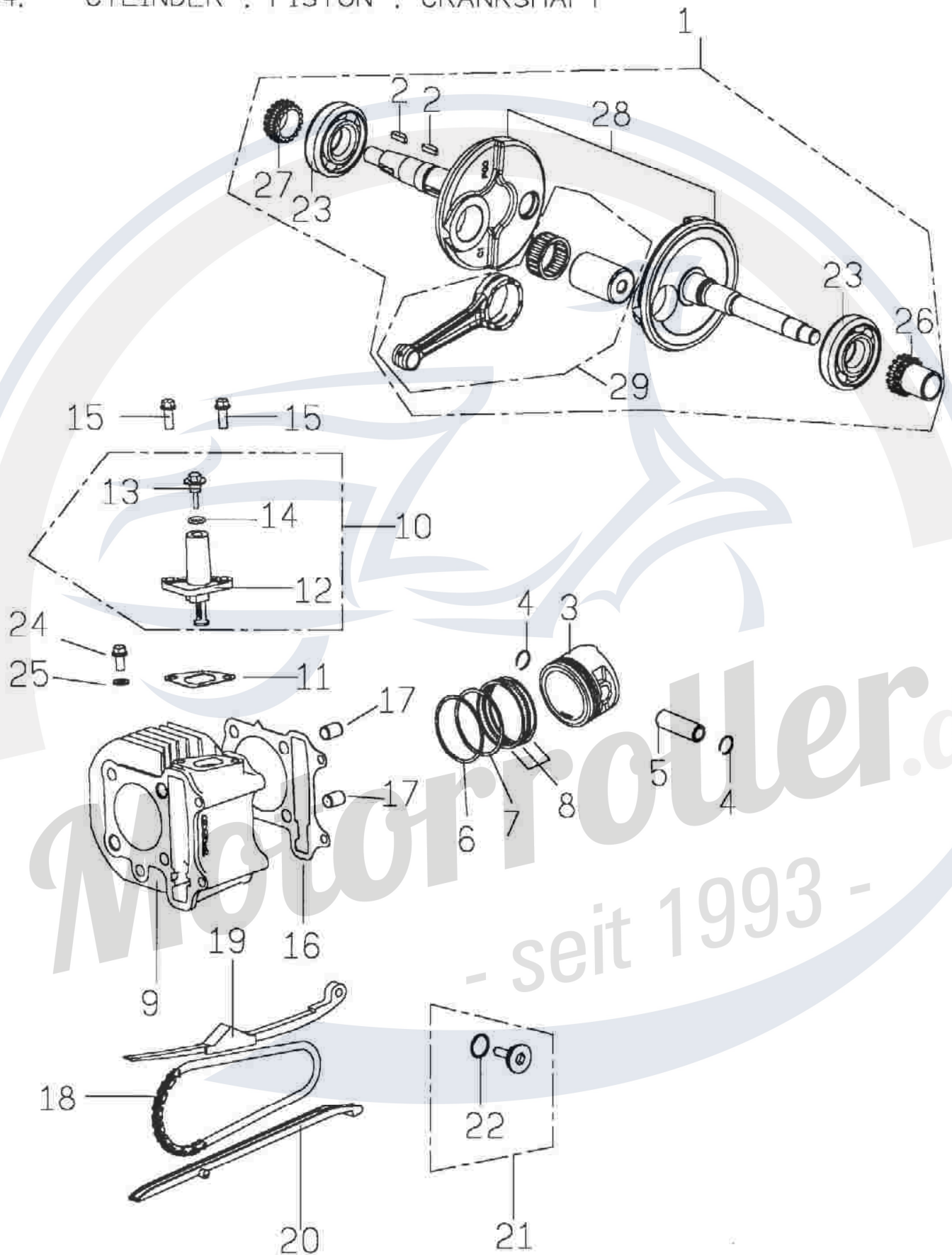


FIG. 3 ENGINE CYLINDER HEAD			
REF NO	PARTNO	PART NAME	Q'TY
1	C50710120001	HEAD COMP. CYLINDER	1
5	C5071200000	VALVE EXHAUST	1
6	C5071300000	VALVE INLET	1
7	C5071071000	GASKET HEAD CYL.	1
8	93541001401	LOCK PIN	2
9	90190610000	HEXAGON FLANGE BOLT	2
10	90170802900	STUD BOLT	2
11	90170606300	STUD BOLT	2
12	C1261320000	INSULATOR CARB GASKET	1
13	C1261310000	INSULATOR CARB	1
14	C1261052000	INTAKE MANIFOLD COMP	1
15	95512700001	O RING	1
16	90150400800	C-R TAPPING MACHINE SCREW	4
17	C1261061000	HOSE CLAMP	1
18	92040600000	HEXAGON FLANGE NUT	2
19	C12220000002	IGNITION PLUG (CR7HSA)	1
20	92431600002	PLAIN WASHER	2
21	C5071411000	OUTER SPRING, VALVE	2
22	C1071440000	RETAIER VALVE SPRING	2
23	C1071430000	COTTER VALVE	4
24	C5073000000	CAM, SHAFT ASSY.	1
25	C1072060000	SHAFT, EX.ROCKER ARM	1
26	C1072010000	VALVE RXKER ARM	2
27	C1072420000	SCREW TOPPED ADJUSTER	2
28	92020500001	HEXAGON NUT	2
29	C1072050000	SHAFT, EX.ROCKER ARM	1
30	93541001401	LOCK PIN	2
31	C1072430000	CAMSHAFT HOLDER	1
32	92140800000	PLAIN WASHER	4
33	92040800000	HEXAGON FLANGE NUT	4
34	C1071102000	CYL.HEAD COVER COMP.	1
35	C1071120000	DACKING, CYL. HEAD COVER	1
36	C1071130000	TUBE CYL HEAD COVER	1
37	ES071190000	TUBE CYL COMP.	1
38	90190602700	HEXAGON FLANGE BOLT	4
39	C1071451000	VALVE SEAL	2
40	C5071421000	INNER SPRING, VALVE	2
41	C10711500001	PARTITION PLATE	1
42	C10711100003	CYLINDER HEAD	1

- seit 1993 -

E4. CYLINDER , PISTON , CRANKSHAFT



Motorroller.de
- seit 1993 -

FIG. 4 ENGINE CRANKSHAFT

REF NO	PARTNO	PART NAME	Q'TY
1	C50665010002	CRANKSHAFT COMP.	1
2	93530402500	WOODRUFF KEY	2
3	C50670110001	PISTON	1
4	G1067151000	CLIP,PISTON PIN	2
5	C5067110000	PISTON PIN	1
6	C50673100001	PISTON RING (1)	1
7	C50673200001	PISTON RING (2)	1
8	C50674000001	OIL SCRAPER RING COMP	1
9	C50640100004	CYLINDER (57.5)	1
10	C5072500000	CHAIN ADJUSTER COMP.	1
11	C5072480000	GASKET,CHAIN ADJUSTER	1
13	90070600600	CR TRUSS HEAD TAPPING SCREW	1
14	95511000002	O-RING	1
15	90180602000	HEXAGON FLANGE BOLT	2
16	C5064110000	GASKET CYLINDER	1
17	93541001401	LOCK PIN	2
18	C10724600001	CHAIN,CAMSHAFT	1
19	C1072440000	TENSIONER,CAM CHAIN	1
20	C5072470000	GUIDE COMP,CAM CHAIN	1
21	C1072490000	PIVOT,CAM CHAIN TENSION COMP	1
22	95511500001	O RING	1
23	C1062100000	ROLLER BEARING	2
24	90190601203	HEXAGON FLANGE BOLT	1
25	92140600011	PLAIN WASHER	1
26	C5066130000	TIMING SPROCKET	1
27	C1066140000	OIL PUMP SPROCKET	1
28	C506F010000	LH & RH CRANK ASSY.	1
29	C506F020000	CONNECTING ROD ASSY.	1

Motorroller.de
- seit 1993 -

E5 STARTING MOTOR, OIL PUMP

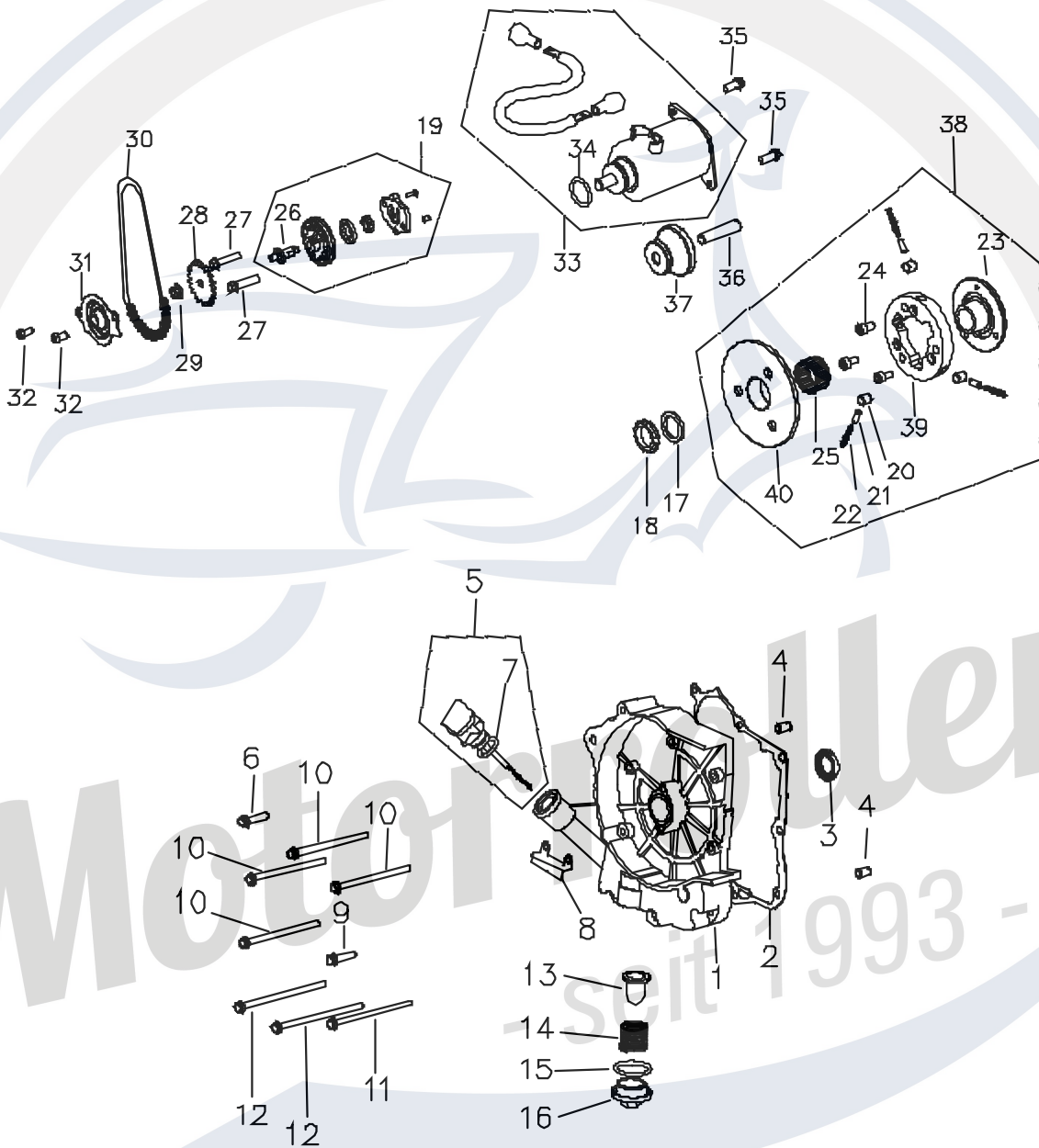


FIG. 5 ENGINE RIGHT CRANKCASE COVER

REF NO	PARTNO	PART NAME	Q'TY
1	C10680100001	RH. CRANKCASE COVER	1
2	C1068020000	GASKET RH. CRANKCASE COVER	1
3	95572030501	OIL SEAL TC TYPE	1
4	93540801400	LOCK PIN	2
5	X2068110000	GAUSE,OIL LEVEL COMP	1
6	90190603000	HEXAGON FLANGE BOLT	1
7	95511800001	O-RING	1
8	C1706640000	A.C.G PLATE	1
9	90190602700	HEXAGON FLANGE BOLT	1
10	90190609500	HEXAGON FLANGE BOLT	4
11	90190610000	HEXAGON FLANGE BOLT	1
12	90190611000	HEXAGON FLANGE BOLT	2
13	G1062180000	SCREEN OIL FILTER	1
14	C1062190000	SPRING OIL FILTER SCREEN	1
15	95513100000	O-RING	1
16	C1062240000	CAP TAPPET ADJUSTING HOLE	1
17	92142200000	PLAIN WASHER	1
18	C1243060000	NUT LOCK □ LEFT THREAD □	1
19	C1081000000	OIL PUMP ASSY	1
20	C1243030000	ROLLER ONE WAY CLUTCH	3
21	C1243020000	COP,ROLLER SPRING	3
22	G1243010000	COMPRESS SPRING	3
23	C12430500001	COVER CLUTCH OUTER	1
24	90210801000	INNER HEX BOLT	3
25	96590283200	NEEDLE BEARING	1
26	C1081070000	SHAFT,OIL PUMP	1
27	90190602700	HEXAGON FLANGE BOLT	2
28	C1081030000	SPRKT OIL PUMP DRIVEN	1
29	92040600000	HEXAGON FLANGE BOLT	1
30	C10812200001	CHAIN,OIL PUMP	1
31	C1081230000	SEPARATER OIL	1
32	E1681030000	WITH WASHER HEXAGON SCREW	2
33	B5241000000	STARTING MOTOR COMP.	1
34	95512400002	O RING	1
35	90190601601	HEXAGON FLANGE BOLT	2
36	C1242040000	SHAFT,STARTET REDUCTION GEA	1
37	C1242010000	GEAR,STARTER REOUCTION	1
38	C12430000001	ONE WAY CLUTCH ASSY.	1
39	C12431000001	ONE WAY CLUTCH COMP.	1
40	C1244000000	GEAR COMP.STARTING CLUTCH	1

E6 CARBURETOR

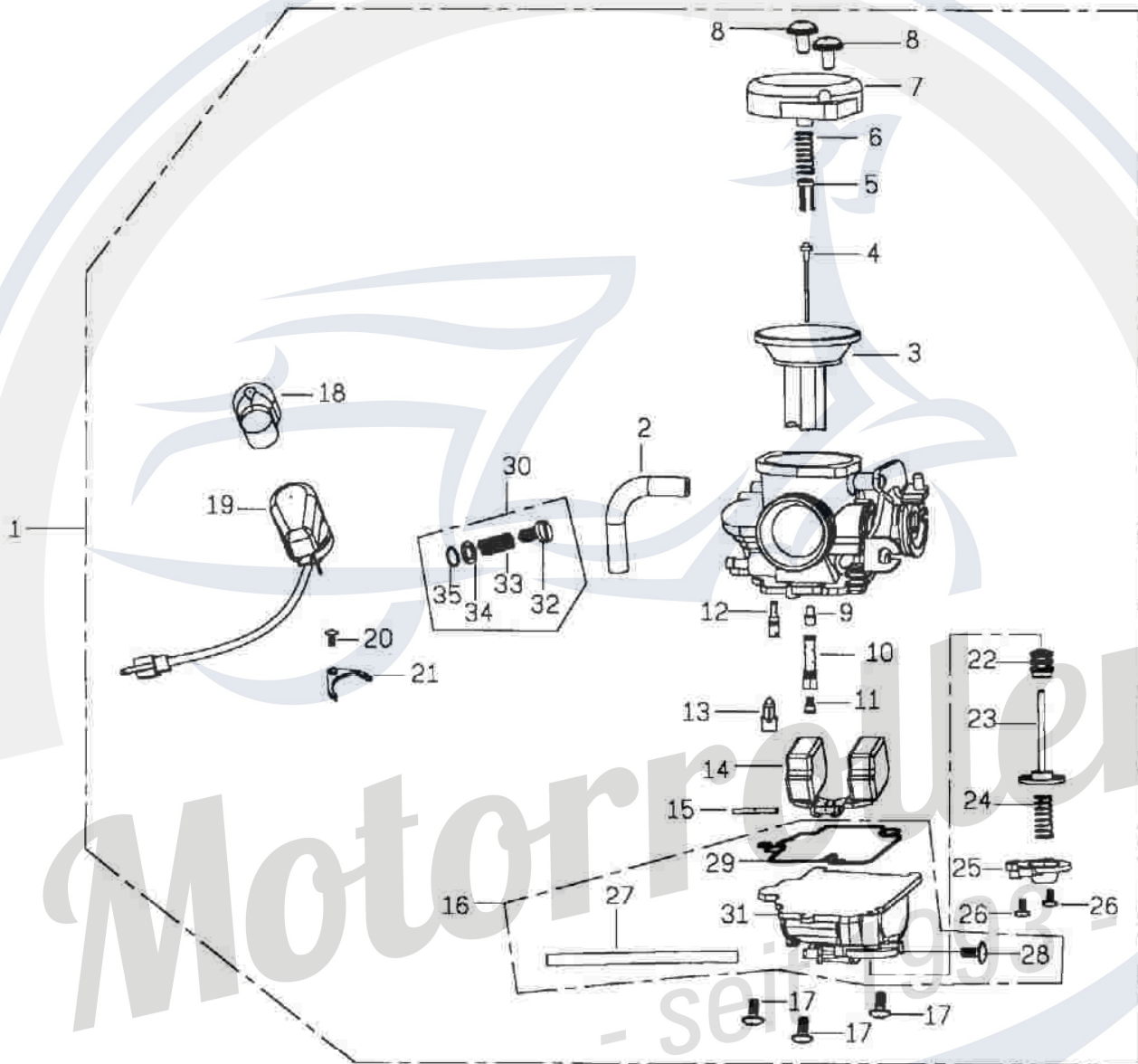


FIG. 6 ENGINE CARBURETOR			
REF NO	PARTNO	PART NAME	Q'TY
1	C51510010001	CARBURETOR ASSY (CVK046)	1
2	16199GY69000	TUBE SET	1
3	14029232201	VACUUM PISTON COMP	1
4	N4254HLGL	JET NEEDLE COMP	1
5	12298057000	VALVE PLATE SET	1
6	1290A232000	SPG;COMPR	1
7	10308737003	TOP SET	1
8	01108031100	SCREW,PAN	2
9	N42633C00	NEEDLE JET	1
10	N41318C00	NEEDLE JET HOLDER	1
11	991011160980	MAIN JET	1
12	1001440H0381	SLOW JET	1
13	16155ZG8L100	FLOAT VALVE SET	1
14	10528622101	FLOAT COMP	1
15	W952525250	ARM PIN	1
16	K3500190600	FLOAT CHAMBER SET	1
17	93500040121H	SCREW,PAN	3
18	12308567001	HOLDER CAP	1
19	40000940000	AUTO BYSTARTER SET	1
20	938920400818	SCREW WASHER	1
21	10908732001	SET PLATE	1
22	10280547000	SEALING CAP	1
23	12018302201	DIAPHRAGM COMP	1
24	1290A072000	SPG;COMPR	1
25	12308502000	COVER	1
26	93500040101H	SCREW;PAN	2
27	1785402H0040	TUBE SET	1
28	11988222000	DRAIN SCREW	1
29	12028656000	O RING	1
30	K4460020100	PILOT SCREW SET	1
31	N35061E00	FLOAT CHAMBER	1
32	N44612A00	SCREW	1
33	W17115189901	COMPRESION SPRING	1
34	03018032000	PLAIN WASHER	1
35	16075KG89010M1	O RING	1

Motorroller.de
- seit 1993 -

E7 DRIVEN PULLEY

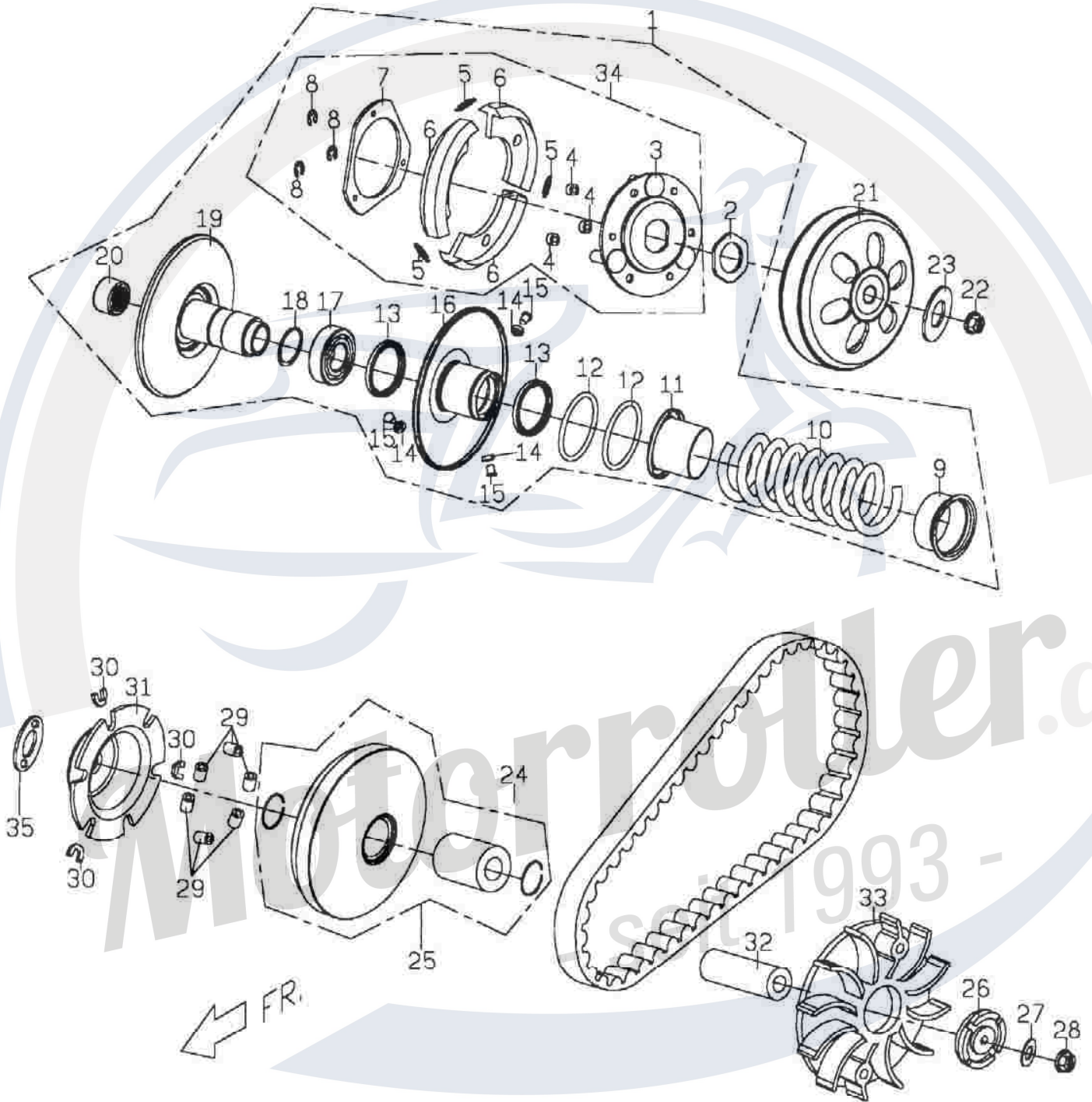


FIG. 7 ENGINE DRIVEN PULLEY			
REF NO	PARTNO	PART NAME	Q'TY
1	C1123700000	BELT PULLEY COMP,DRIVEN FACE	1
2	P1123410000	NUT	1
3	C1123300000	BODY COMP,DRIVE PLATE	1
4	C1123420000	DAMPER RUBBER,CLUTCH	3
5	C1123430000	SPRING,CLUTCH	3
6	C1123440000	WEIGHT SET,CLUTCH	3
7	C1123450000	PRESSURE PLATE,CLUTCH	1
8	92180700000	RETAINING RING E TYPE	3
9	C1123330000	COLLAR,SPRING	1
10	C1123520000	SPG,DRIVEN FACE	1
11	C1123530000	SEALED SOCKET	1
12	95514000001	O-RING	2
13	95593441400	OIL SEAL G TYPE	2
14	C1123250000	BUSH	3
15	C1123240000	PIN,GRIDE	3
16	C1123210000	BODY COMP,DRIVEN FACE	1
17	96520690200	DEEP GROOVE BALL BEAR ONE SEAL	1
18	92162800000	RETAINING RING C TYPE	1
19	C1123110000	DOBY COMP,DRIVEN FACE	1
20	96550202900	NEEDLE BEARING	1
21	C1123510000	OUTER BODY COMP,CLUTCH	1
22	92041200002	HEXAGON FLANGE NUT	1
23	92141200005	PLAIN WASHER	1
24	C21220000001	BELT	1
25	C11211000001	FACE MOVABLE DRIVE	1
26	C1251030000	RATCHET KICK STARTER	1
27	92141200005	PLAIN WASHER	1
28	92041200002	HEXAGON FLANGE NUT	1
29	C1121200000	WEIGHT ROLLER COMP.	6
30	C1121321000	SLIDE PIECE	3
31	C1121310000	RAMP PLATE	1
32	C1121050000	BOSS,MOVABLE DRIVE FACE	1
33	C11210600001	DRIVE FACE	1
34	C1123600000	DRIVEN PULLEY ASSY.	1
35	C5066051000	SPACE BUSH	1

Motorroller.de
- seit 1993 -

E8 AIR CLEANER COMP.

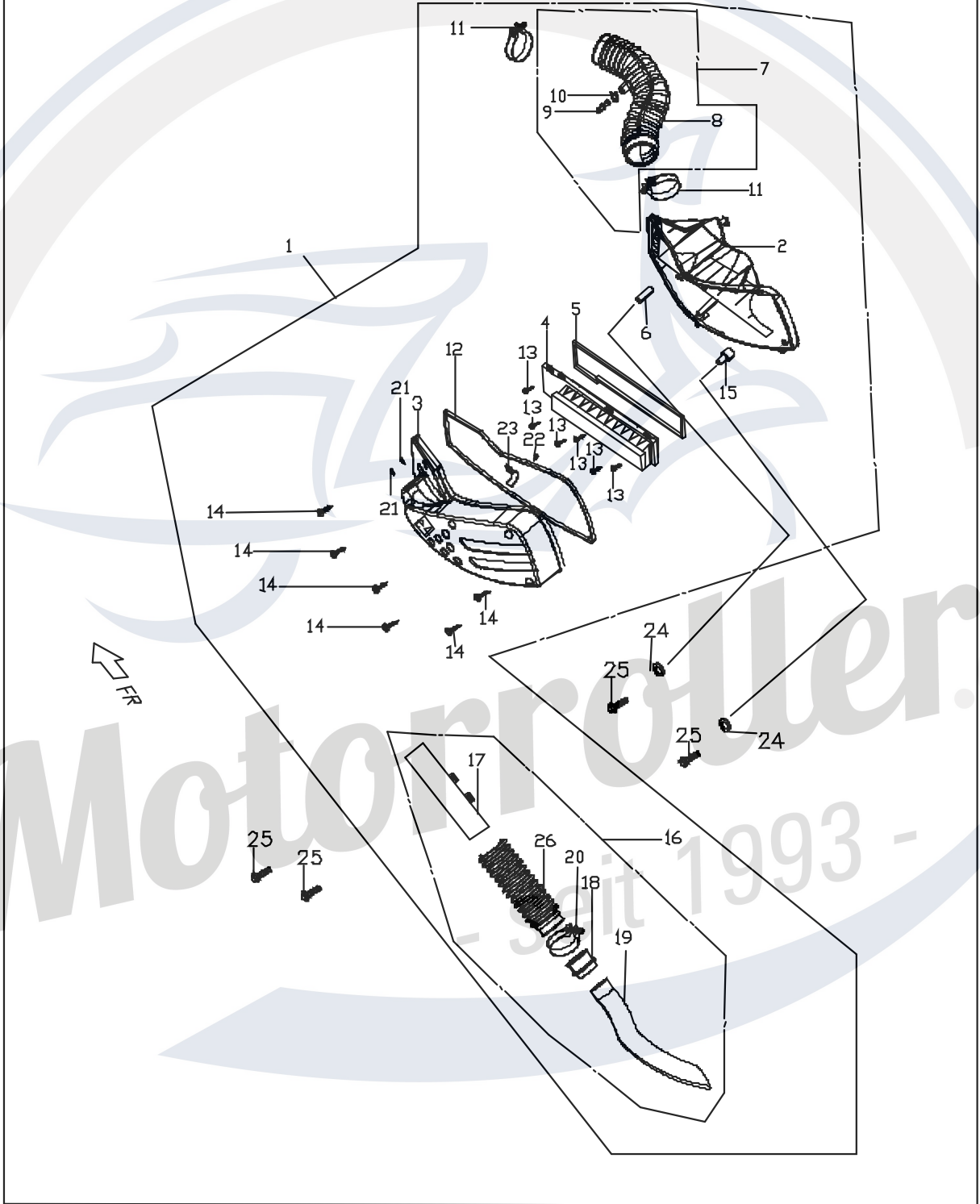


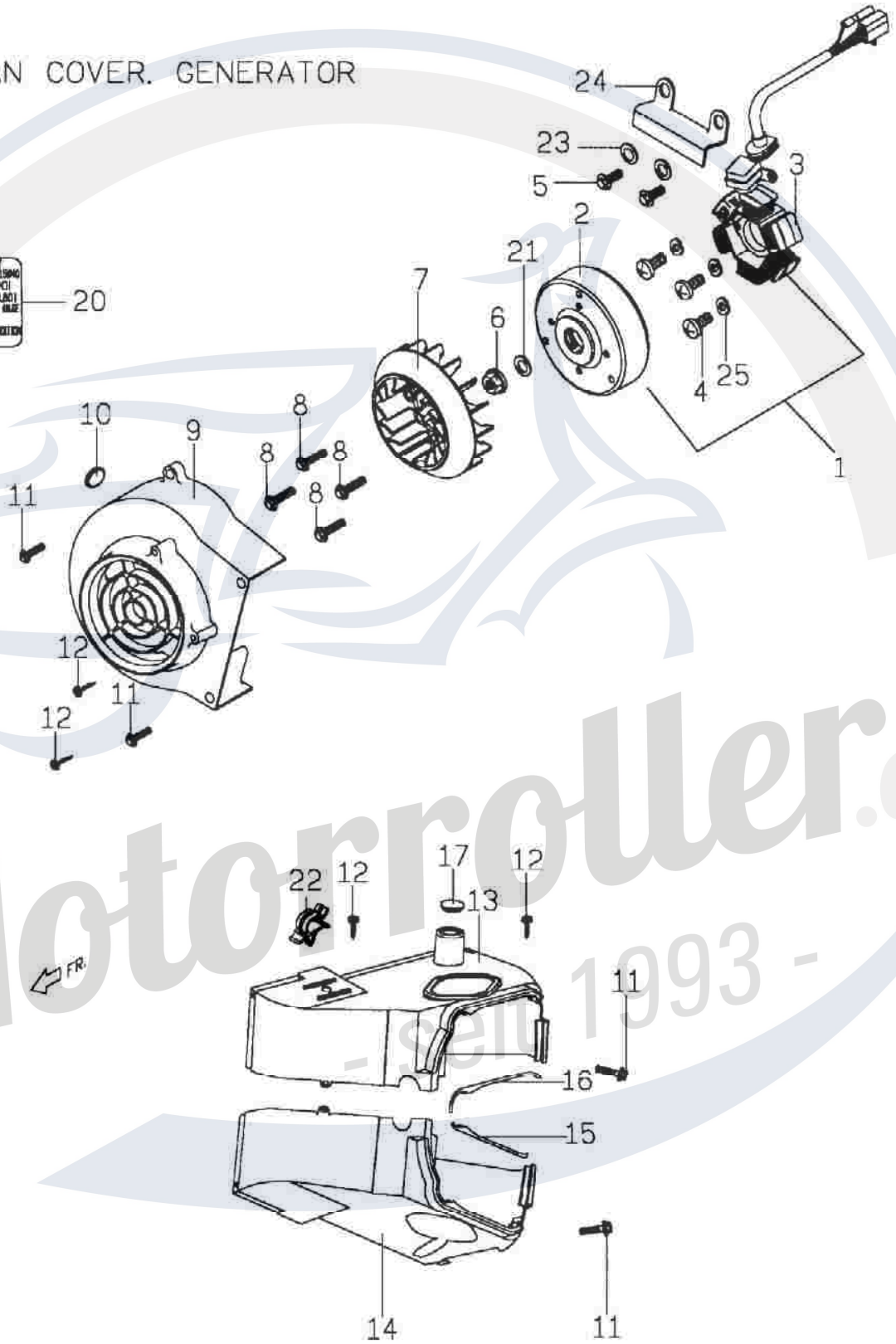
FIG. 8 ENGINE AIR CLEANER ASSEMBLY

REF NO	PARTNO	PART NAME	Q'TY
1	C52620010001	AIR CLEANER COMP	1
3	C2262020000	COVER,AIR CLEANER	1
4	C5262032000	AIR FILTER	1
5	C2262040000	PACKING,AIR FILTER	1
6	C2262060000	BUSH	1
7	C22623400001	CONNECTION PIPE,AIR CLEANER	1
8	C22620800001	CONNECTION PIPE	1
9	C226B340000	PIPE, TWO WAY	1
10	92221100000	PLANE CLIP	1
11	C1262110000	CLAP	2
12	C2262230000	AIR CLEANER PACKING	1
13	90150501600	CR TRUSS HD TAPPING SCREW	6
14	90150502500	CR TRUSS HD TAPPING SCREW	6
15	C2262250000	BUSH	1
16	C2262260000	INLET PIPE ASSY	1
17	C2262290000	INLET CONNECTING PIPE	1
18	90150502500	CONNECTING PIPE	1
19	C2262290000	INLET PIPE INSIDE	1
20	C1262110000	CLAMP.	1
21	90130301300	TAPPING SCREW	2
22	90130501000	TAPPING SCREW	1
23	C2262320000	COMPRESS PLATE	1
24	92140600005	PLAIN WASHER	2
25	90190604500	HEXAGON FLANGE BOLT	2
26	C2262210000	INLET CONNECTING PIPE	1

Motorroller.de
- seit 1993 -

E9 FAN COVER. GENERATOR

ENGINE OIL QUANTITY
PLEASE USE ASSIGNED OIL (SAE 15W40)
TOTAL QUANTITY (LITERS)
DISPLACEMENT QUANTITY (GALLONS)
AFTER REPLACEMENT PLEASE SEE OIL LEVEL MARK
ON SIDE OF OIL TANK.
CHECK OIL LEVEL IN RANGE OFF CONDITION
WHEEL NUMBER OF OIL.



Motorroller.de
1993 -

FIG. 9 ENGINE GENERATOR

REF NO	PARTNO	PART NAME	Q'TY
1	C5221000000	AC GENERATOR ASSY. (DC LIGHTING)	1
2	C5221010000	FLYWHEEL COMP. (DC LIGHTING)	1
3	C5221020000	STATOR COMP(DC LIGHTING)	1
4	90210502800	HEXAGON FLANGE BOLT	3
5	90190501201	HEXAGON FLANGE BOLT	2
6	92041200000	HEXAGON FLANGE NUT	1
7	C1043001000	FAN	1
8	90190601203	HEXAGON FLANGE BOLT	4
9	C1042001000	FAN COVER	1
10	C1042030000	RUBBER PLUG	1
11	90180602000	HEXAGON FLANGE BOLT	4
12	90150501600	CR PAN HD.TAPPING SCREW	4
13	C5042210000	COOLING COWL(2)	1
14	C5042102000	COOLING COWL(1)	1
15	C1042120000	SEAL,COOLING HOOD(1)	1
16	C1042220000	SEAL,COOLING HOOD(2)	1
17	C1701260000	RUBBER PLUG	1
20	C1603130001	ENG., OIL NOTICE LABEL	1
21	92141200005	PLAIN WASHER	1
22	C1701290000	PLASTIC LOCKER	1
23	92110500000	PLAIN WASHER	2
24	C1706640000	ACG PLATE	1
25	92110500000	SPRING WASHER	3

Motorroller.de
- seit 1993 -

E10 TRANSMISSION

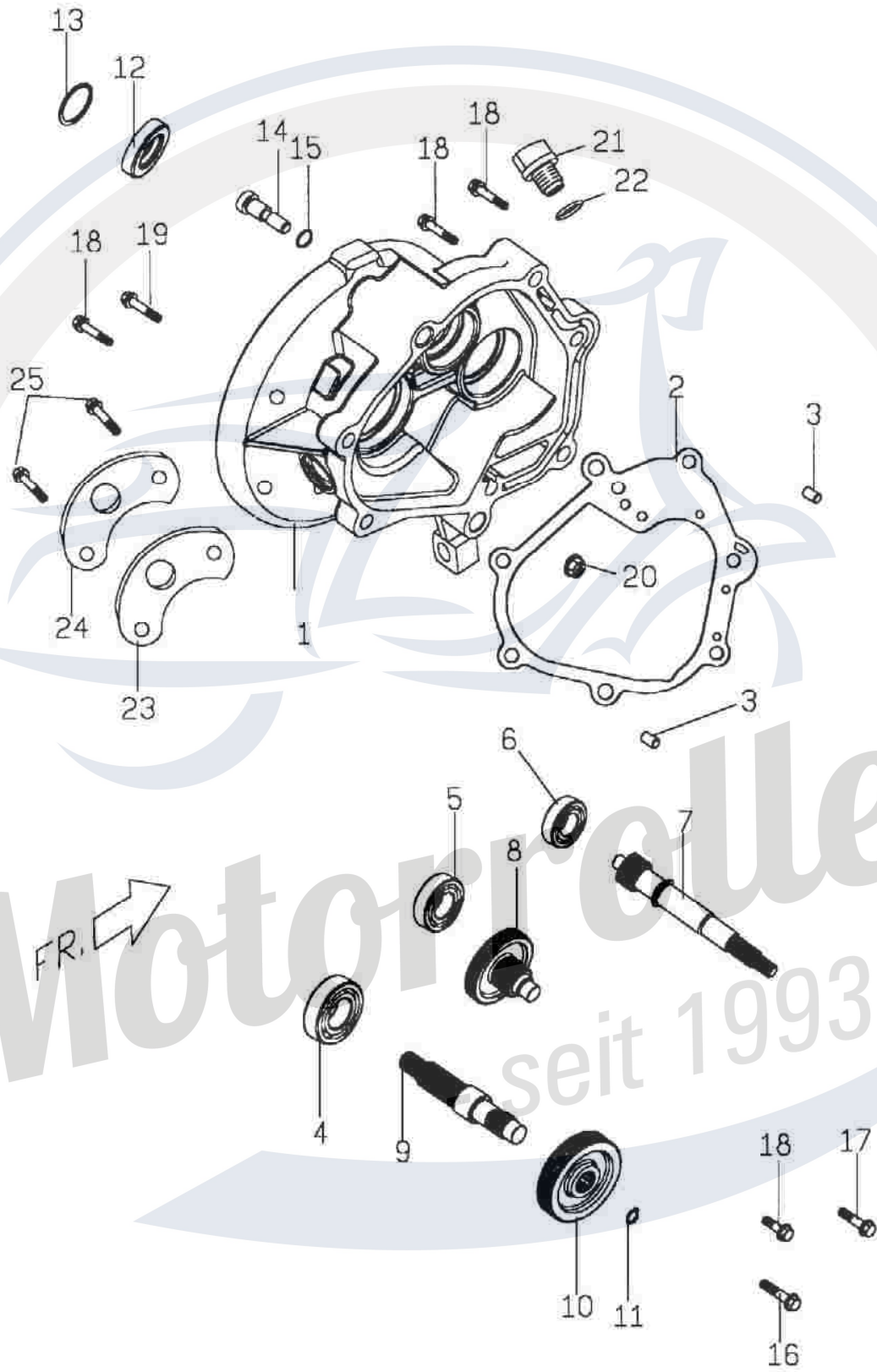


FIG. 10 ENGINE GEARBOX			
REF NO	PARTNO	PART NAME	Q'TY
1	C21410100001	TRANSMISSION COVER	1
2	C2141020000	TRANSMISSION COVER GASKET	1
3	93541001401	LOCK PIN	2
4	96510630100	BALL BEARING	1
5	96510600200	BALL BEARING	1
6	96530622200	BALL BEARING.DOUBLE SEALED	1
7	C61411000001	DRIVE SHAFT	1
8	C61412000001	IDLE GEAR COMP.	1
9	B5141410000	AXLE DRIVE	1
10	C1141310000	FINAL GEAR	1
11	92172000000	RETAINING RING C TYPE	1
12	95572742700	OIL SEAL TC TYPE	1
13	92165000000	RETAINING RING C TYPE	1
14	M2407430000	PIVDT REAR BK.SHDE	1
15	95510800000	O RING	1
16	90190805001	HEXAGON FLANGE BOLT	1
17	90190804501	HEXAGON FLANGE BOLT	1
18	90190804003	HEXAGON FLANGE BOLT	4
19	90190803003	HEXAGON FLANGE BOLT	1
20	92060800000	HEXAGON FLANGE NUT	1
21	P1062150000	OIL BOLT	1
22	95511300001	O-RING	1
23	B5701080000	ENGINE REINFORCED PLATE	1
24	90190602002	HEXAGON FLANGE BOLT	2
25	B5701090000	ENGINE REINFORCED PLATE	1

Motorroller.de
 - seit 1993 -

FIG. 11

ENGINE/MUFFLER

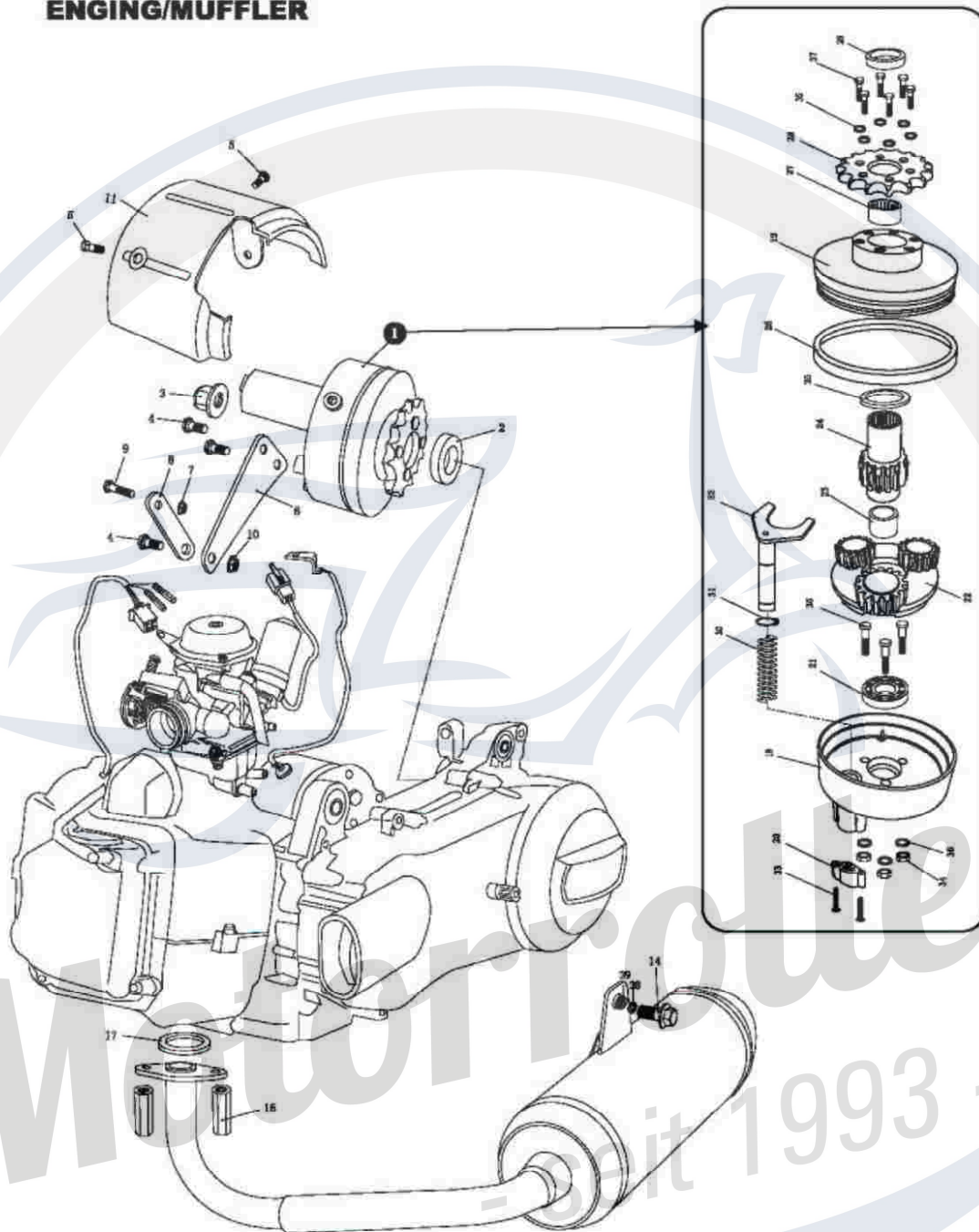


FIG. 11 REVERSE ASSY.

REF NO	PART NO	PART NAME	Q'TY
1	B5144000000	REVERSE ASS'Y	1
2	B5144510000	INTERNAL SPACER	1
3	92041600000	NUT FLANGE LOCK M16	1
4	90021002000	BOLT STRAP M10*1.25*20	3
5	90200801600	BOLT WASHER M8*16	2
6	B5144520000	BRACKET, REVERSE	1
7	92040800002	NUT FLANGE LOCK M8	1
8	B5144530000	CONNECTOR PANEL, REVERSE	1
9	90020804002	BOLT STRAP M8*1.25*40	1
10	92041000001	NUT FLANGE LOCK M10	1
11	B5144540000	CHAIN PROTECTOR, RR	1
14	90190804003	HEXAGON BOLT	1
15	B52810000001	MUFFLER ASS'Y	1
16	92050800000	CASTLE NUT	2
17	E9281020000	GASKET, MUFFLER	1
18	B5495000000	GEAR CASE.R	1
19	B5495010000	GEAR CASE.L	1
20	B5495090000	COVER.GEAR SHITING YOKE	1
21	96510600301	BEARING 6003 DDU	1
22	B5495030000	COUNTER GEAR SHAFT COMP	1
23	B5495080000	BUSHING.DRIVE GEAR	1
24	B5495020000	DRIVE GEAR	1
25	B5495070000	COLLAR.DRIVE GEAR	1
26	B5495060000	RUBBER OIL SEAL	1
27	96550283500	NEEDLE BEARING 28*35*20	1
28	B5492200000	DRIVE SPROCKET	1
29	B5492210000	INTERNAL COLLAR	1
30	B5495040000	SPRING.GEAR SHIFTING YOKE	1
31	B5706090000	CIRCLIP	1
32	B5495050000	GEAR SHIFTING YOKE	1
33	90070602000	SCREW. PAN M6*20	2
34	B5495100000	NUT HEX (M8)	3
35	92110800004	WASHER. LOCK	9
36	B5495110000	BOLT (M8*1.25*40)	3
37	B5495120000	BOLT (M8*1.25*25)	6
38	92110800000	SPRING WASHER	1
39	92140800000	PLAIN WASHER	1

- seit 1993 -

FIG. 12

FRAME GROUP

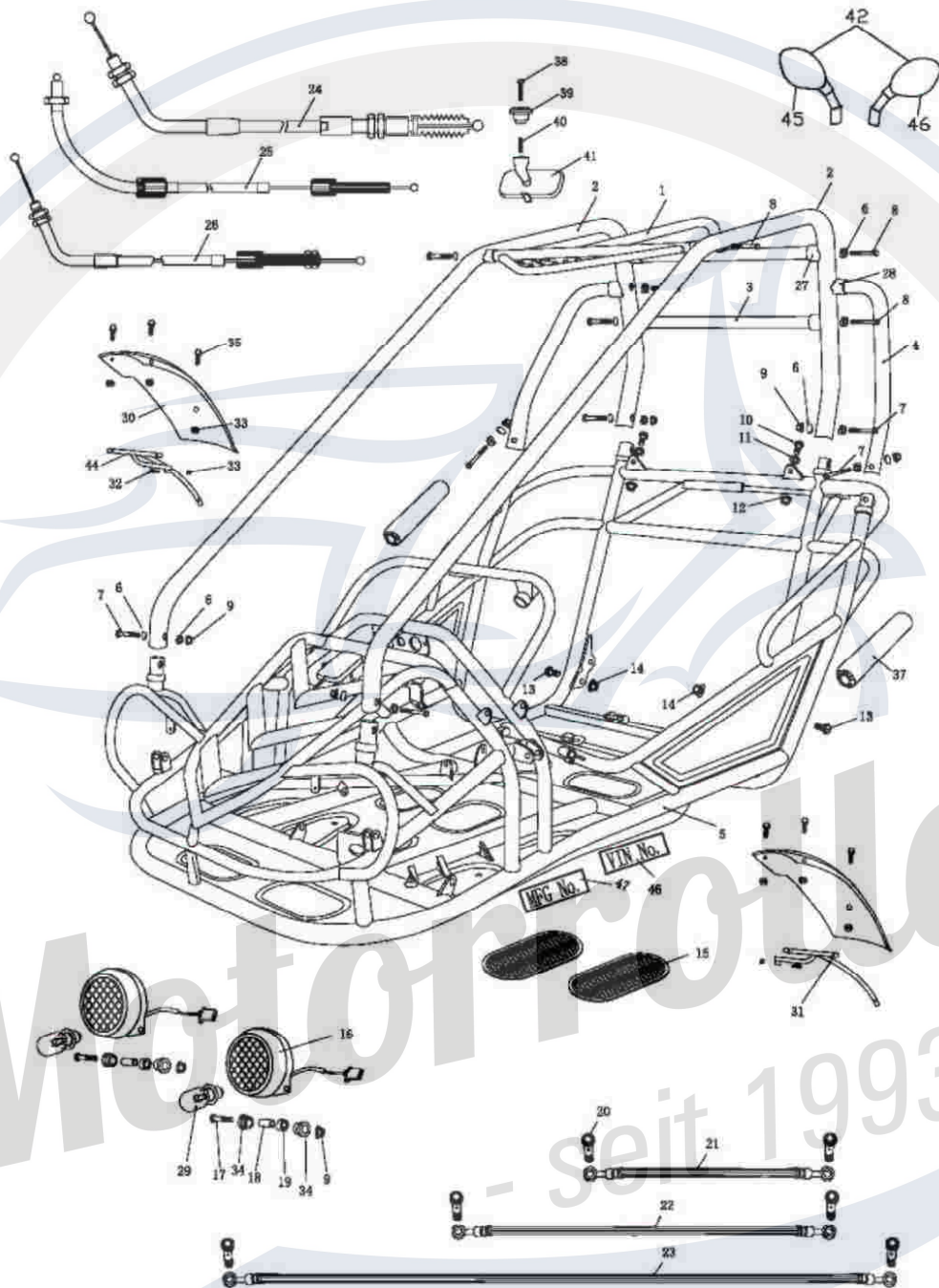


FIG. 12 FRAME GROUP

REF NO	PART NO	PART NAME	Q'TY
1	B5421010000	ROLL CAGE CROSS. FRT	1
1	B54210101M0	ROLL CAGE CROSS. FRT (RED)	1
1	B54210103D0	ROLL CAGE CROSS. FRT (GREEN)	1
1	B54210104X0	ROLL CAGE CROSS. FRT (BLUE)	1
2	B5421020000	ROLL CAGE BAR. LH,RH	2
2	B54210201M0	ROLL CAGE BAR. LH,RH (RED)	2
2	B54210203D0	ROLL CAGE BAR. LH,RH (GREEN)	2
2	B54210204X0	ROLL CAGE BAR. LH,RH (BLUE)	2
3	B5421030000	ROLL CAGE CROSS BAR. RR	1
3	B54210301M0	ROLL CAGE CROSS BAR. RR (RED)	1
3	B54210303D0	ROLL CAGE CROSS BAR. RR (GREEN)	1
3	B54210304X0	ROLL CAGE CROSS BAR. RR (BLUE)	1
4	B5421040000	ROLL CAGE BAR. L.R.SIDE	2
4	B54210401M0	ROLL CAGE BAR. L.R.SIDE (RED)	2
4	B54210403D0	ROLL CAGE BAR. L.R.SIDE (GREEN)	2
4	B54210404X0	ROLL CAGE BAR. L.R.SIDE (BLUE)	2
5	B5421000000	FRAME COMP	1
5	B54210001M0	FRAME COMP (RED)	1
5	B54210003D0	FRAME COMP (GREEN)	1
5	B54210004X0	FRAME COMP (BLUE)	1
6	B5701070000	R-WASHER	20
7	90200805500	BOLT-WASHER M12*1.25*55	8
8	90200805501	BOLT-WASHER M8*1.25*55	6
9	92040800003	NUT.FLANGE LOCK M8	8
10	B5706030000	SPECIAL BOLT.	2
11	B5701050000	WASHER.BELT	2
12	B5706040000	NUT. BELT	2
13	90201202500	BOLT-WASHER M12*1.25*25	2
14	92041200003	NUT.FLANGE LOCK M12	2
15	B5624500000	FOOT PLATE. RUBBER	4
16	B5661000000	HEADLIGHT UNIT	2
17	90200805000	BOLT-WASHER M8*1.25*50	2
18	B5661030000	COLLAR.HEADLIGHT	2
19	B5661040000	BUSH. HEADLIGHT	2
20	B5403810000	BOLT.BANJO	6
21	B5403600000	HOSE ASSY. LH BRAKE 34"	1
22	B54036000001	HOSE ASSY. RH BRAKE 43"	1
23	B5403700000	HOSE ASSY. RR BRAKE 75"	1
24	B5544800000	CABLE COMP. THROTTLE	1
25	B5544400000	CABLE COMP. REVERSE	1
26	B5544410000	CABLE COMP. PARKING BRAKE	1
27	B5421050000	TUBE SEAT	6
28	B5421060000	TUBE SEAT	2
29	B5661010000	BULB, HEADLAMP	2
30	B5621000000	FENDER. FRT	2
30	B56210001M0	FENDER. FRT (RED)	2
30	B56210003D0	FENDER. FRT (GREEN)	2
30	B56210004X0	FENDER. FRT (BLUE)	2
31	B5706010000	BRACKEY.FRONT FENDER. LH	1
32	90020604000	BOLT	2
33	92400600001	NYLON LOCK NUT M6	10
34	B5661020000	RUBBER MOUNT.HEADLAMP	4
35	90200601600	BOLT-WASHER M6*16	6
37	B5701010000	COVER. ROBE-RAIL	2

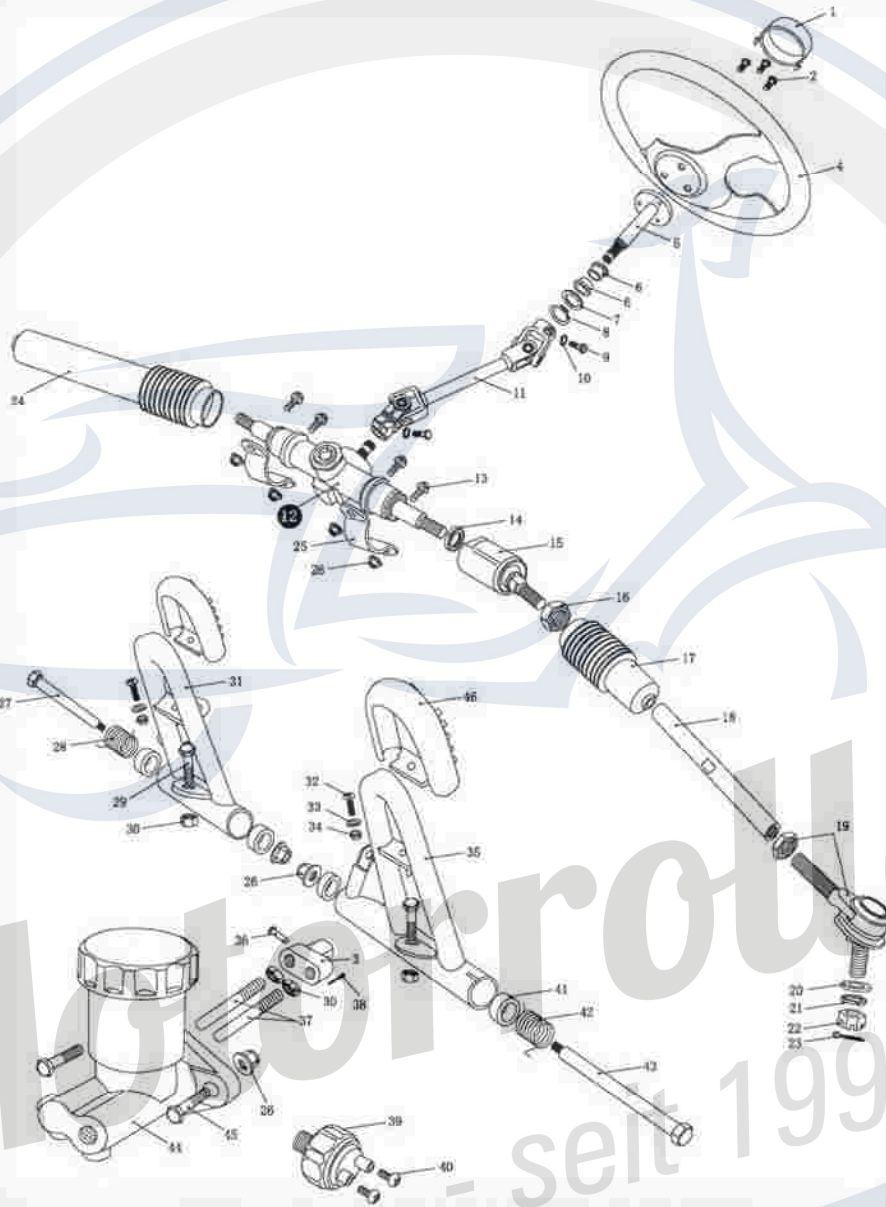
38	B5616030000	BOLT.	1
39	B5616010000	MOUNT.REAR MIRROR	1
40	B5616020000	SPRING.REAR MIRROR	1
41	B5616040000	MIRROR ASSY.	1
42	B5616000000	REAR MIRROR COMP.	1
43	92030600004	HEXAGON NUT	1
44	B570G010000	BRACKEY. FRONT FENDER. RH	1
45	B561F020000	RH BACK MIRROR	1
46	B561F010000	LH BACK MIRROR	1
47	B5429010000	MFG. MARK	1



Motorroller.de
- seit 1993 -

FIG. 13

STEERING SHAFT ASSY.



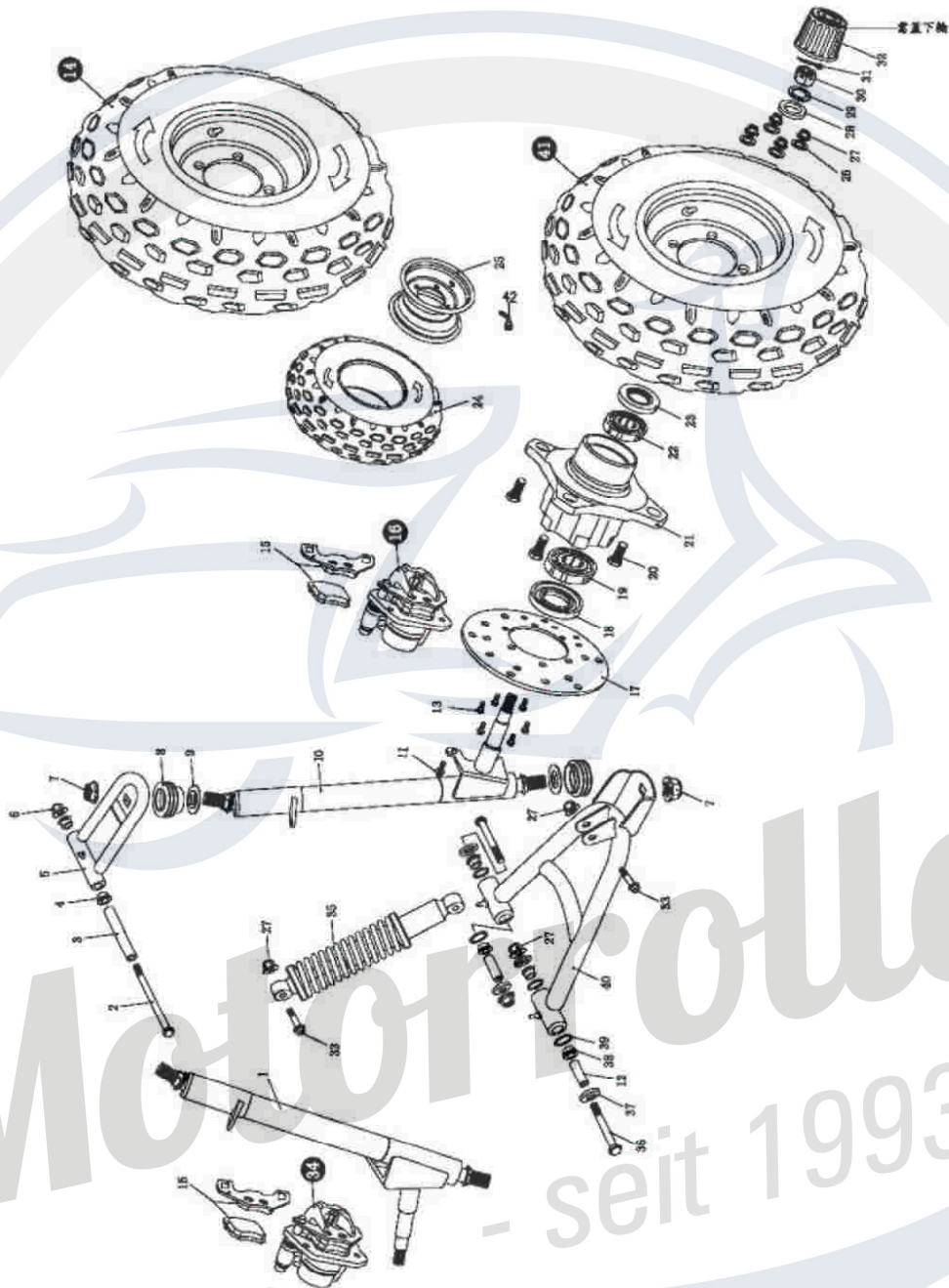
Motorroller.de
- seit 1993 -

FIG. 13 STEERING SHAFT ASSY.

REF NO	PART NO	PART NAME	Q'TY
1	B5612030000	COVER. STEERING BOLT	1
2	90200601200	BOLT STRAP M6*12	3
3	B5612040000	BRACKEY. SPINDLE	1
4	B5612000000	STEERING WHEEL	1
5	B5612010000	STEERING SHAFT	1
6	B5612050000	BUSH. STEERING SHAFT	2
7	B5612060000	SPECIAL WASHER.	1
8	B5706080000	CIRCLIP	1
9	90020802503	BOLT M8*25	2
10	92110800004	WASHER. LOCK	2
11	B5612020000	STEERING KNUCKLE	1
12	B5445000000	STEERING GEAR	1
13	90200802500	BOLT-WASHER M8*1.25*25	4
14	B5445080000	ROUND NUT M16*1.5	2
15	B5445010000	STEERING BALL JOINT	2
16	B5445020000	NUT	2
17	B5445030000	DUST COVER. L BALL JOINT	1
18	B5445040000	TIE ROD	2
19	B5445050000	ROD END	2
20	92141000014	WASHER. FLAT	2
21	92111000003	WASHER. LOCK	2
22	92071000000	NUT. CASTLE M10	2
23	93520201501	PIN.COTTER 2*15	2
24	B5445060000	DUST COVER. RH BALL JOINT	1
25	B5445070000	BRACKET. STEERING GEAR	2
26	92040800003	NUT.FLANGE LOCK M8	8
27	B5404260000	BOLT	1
28	B5404270000	SPRING	1
29	90200804000	BOLT-WASHER M8*1.25*40	2
30	92020800005	NUT M8	2
31	B5404210000	THROTTLE PEDAL COMP.	1
32	90070501501	SCREW. PAN M5*15	2
33	92140500017	WASHER. FLAT	2
34	92400500000	NYLON LOCK NUT M5	2
35	B5404200000	BRAKE PEDAL COMP.	1
36	93540602400	PIN. 6*24	1
37	B5445090000	PIN. SPINDLE	2
38	93520201201	PIN.COTTER 2*12	1
39	B5543900000	SWITCH ASSY. BRAKE LAMP	1
40	90070300600	SCREW. PAN M3*6	2
41	B5404240000	BUSH. PEDAL	4
42	B5404250000	SPRING. BRAKE PEDAL RETURN.R	1
43	B5404230000	BOLT.BRAKE PEDAL	1
44	B5403100000	MASTER CYLINDER	1
45	90200802700	BOLT-WASHER M8*1.25*27	2
46	B5404220000	PEDAL PAD	2

FIG. 14

SUSPENSION ARM ASSY.



Motorroller.de
- seit 1993 -

FIG. 14 SUSPENSION ARM ASSY.

REF NO	PART NO	PART NAME	Q'TY
1	B5421110000	SUPPORT. STRUT AND SPINDLE, RH	1
2	90200810500	BOLT-WASHER M8*1.25*105	2
3	B5446030000	COLLAR.UPPER SUSPENSION ARM	2
4	B5446020000	BUSH.UPPER SUSPENSION ARM	4
5	B5446010000	UPPER SUSPENSION ARM	2
6	92040800003	NUT.FLANGE LOCK M8	2
7	92041200003	NUT.FLANGE LOCK M12	4
8	B5446040000	DUST SEAL.BALL HEAD	4
9	B5446050000	SPACER.BALL HEAD	4
10	B5421120000	SUPPORT. STRUT AND SPINDLE, LH	1
11	90200801400	BOLT STRAP M8*14	4
12	B5447030000	COLLAR.LOWER SUSPENSION ARM	4
13	90200601200	BOLT STRAP M6*12	12
14	B5402000000	FRONT WHEEL ASSY. , RH	1
15	B5403310000	PAD SET, FRT.BRAKE CALIPER	2
16	B5403300000	FRONT BRAKE CALIPER, LH	1
17	B5403500000	DISC, FRONT. BRAKE	2
18	95572547700	DUST SEAL 47*25-7	2
19	96510620404	BEARING 6204	2
20	90201003100	BOLT. TIRE M10*1.25*31	8
21	B5401130000	HUB, FRONT WHEEL	2
22	96510620303	BEARING 6203	2
23	95572742701	DUST SEAL 47*27-7	2
24	X040B3200003	FRONT TIRE (ON ROAD)	2
24	B540B320000	FRONT TIRE (OFF ROAD)	2
25	X0407140770	RIM, FRT (SILVER)	2
26	92141000014	WASHER. FLAT	8
27	92041000003	NUT.FLANGE LOCK M10	16
28	B5402400000	SPACER.FRT.HUB	2
29	92141400012	WASHER. FLAT	2
30	92071400000	NUT. CASTLE M14	2
31	93520303000	PIN.COTTER 3*30	2
32	B5401310000	COVER.FR.HUB	2
33	90201004000	BOLT-WASHER M10*1.25*40	4
34	B540C300000	FRONT BRAKE CALIPER, RH	1
35	B5471000000	CUSHION ASSY., FRT	2
36	90201008000	BOLT-WASHER M10*1.25*80	4
37	B5447010000	DUST CAP.LOWER SUSPENSION ARM	8
38	B5447020000	BUSH.LOWER SUSPENSION ARM	8
39	95512100000	O-RING 21.2*2.65	8
40	B5447000000	LOWER SUSPENSION ARM ASSY	2
41	B5401000000	FRONT WHEEL ASSY, LH	1
42	X040B330000	VALVE, TIRE	2

FIG. 15

REAR CARGO RACK/SEAT/BELT

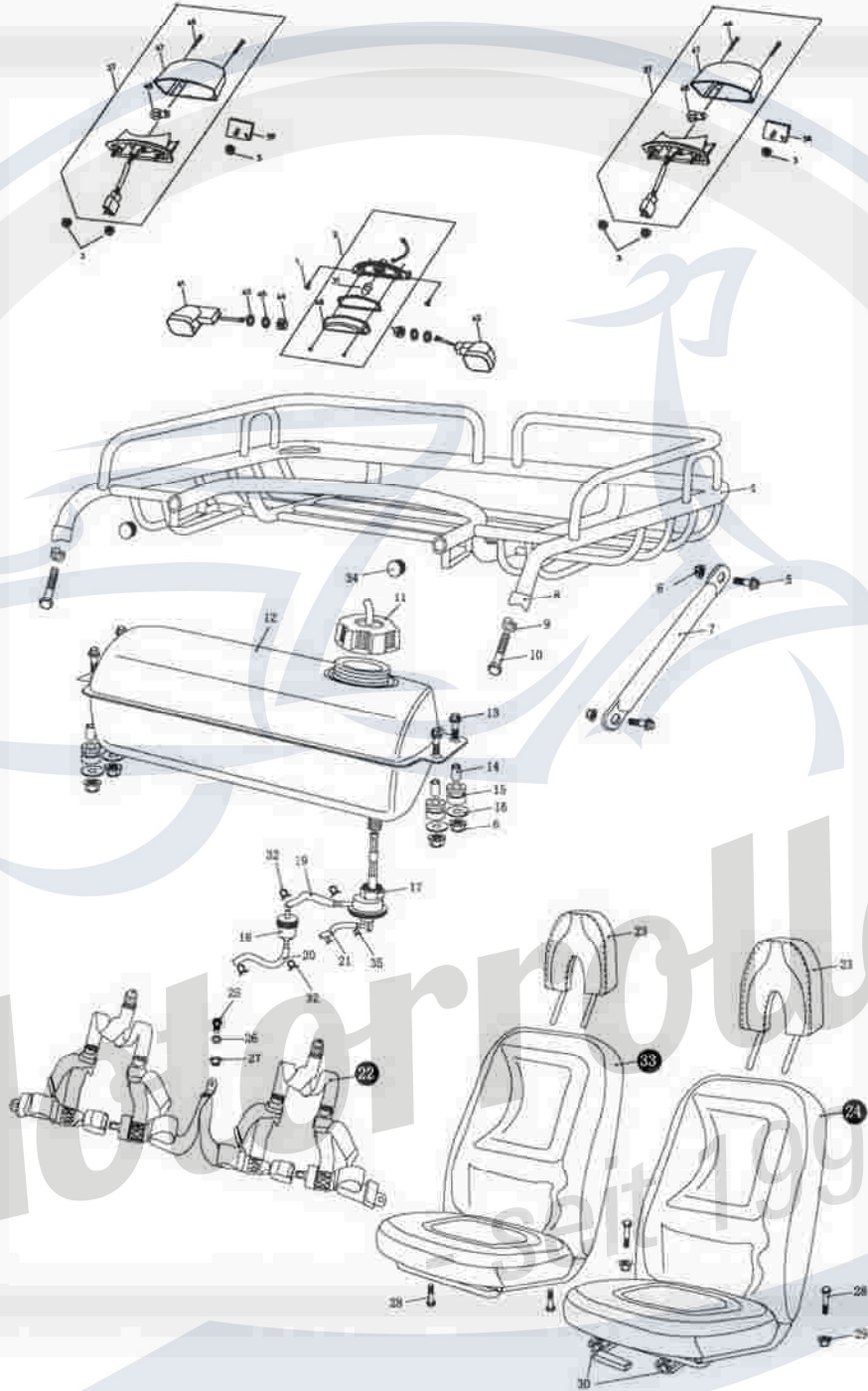


FIG. 15 REAR CARGO RACK/SEAT/BELT

REF NO	PART NO	PART NAME	Q'TY
1	90110401200	TAPPING SCREW	2
2	P5666900000	TAIL LIGHT	1
3	92040600000	HEXAGON FLANGE NUT	4
4	B5676200000	REAR CARGO RACK	1
4	B56762001M0	REAR CARGO RACK (RED)	1
4	B56762003D0	REAR CARGO RACK (GREEN)	1
4	B56762004X0	REAR CARGO RACK (BLUE)	1
5	90200802000	BOLT-WASHER M8*1.25*20	4
6	92040800003	NUT.FLANGE LOCK M8	8
7	B5676210000	SUPPORTER, REAR CARGO RACK	2
7	B56762101M0	SUPPORTER, REAR CARGO RACK (RED)	2
7	B56762103D0	SUPPORTER, REAR CARGO RACK (GREEN)	2
7	B56762104X0	SUPPORTER, REAR CARGO RACK (BLUE)	2
8	B5676220000	TUBE SEAT	2
9	B5701030000	R-WASHER	2
10	90200805501	BOLT STRAP M8*1.25*55	2
11	B5521300000	CAP COMP., FUEL FILLER	1
12	B5521500000	TANK COMP. FUEL	1
12	B55215001M0	TANK COMP. FUEL (RED)	1
12	B55215003D0	TANK COMP. FUEL (GREEN)	1
12	B55215004X0	TANK COMP. FUEL (BLUE)	1
13	90200802500	BOLT-WASHER M8*1.25*25	4
14	B5706050000	COLLAR.TANK COMP.	4
15	B5701040000	RUBBER MOUNT	4
16	92140800008	WASHER. FLAT	4
17	B5523000000	FUEL AUTOCOCK ASS'Y.	1
18	B5521200000	FILTER	1
19	B5526010000	TUBE COMP.FUEL #1	1
20	B5526020000	TUBE COMP.FUEL #2	1
21	B5526030000	TUBE COMP.VACUUM	1
22	B5671020000	BELT, SAFETY	1
23	B5671010000	HEAD-REST	2
24	B5671000000	SEAT COMP., LH	1
25	B5701050000	WASHER.BELT	1
26	B5706030000	BOLT. SPECIAL	1
27	B5706040000	NUT. BELT	1
28	90020804001	BOLT STRAP M8*1.25*40	2
29	92040800003	NUT.FLANGE LOCK M8	2
30	B5671300000	RAIL SET.SEAT	1
31	P566F960000	BULB.LICENCE LIGHT	1
32	B5706060000	CLIP.FUEL TUBE	1
33	B567A000000	SEAT COMP.,RH	1
34	B5701060000	COVER.TUBE	2
35	E1706020000	CLIP.VACUUM TUBE	2
36	C5669000000	REFLECTOR	2
37	P16660000006	BACK LAMP ASSY	2
38	92040600003	HEXAGON	4
39	92020500000	HEXAGON NUT	2
40	92140500014	PLAIN WASHER	2
41	B566C120000	TIRN SIGNAL LAMP ASSY(RF,LR)	2
42	B5663120000	TIRN SIGNAL LAMP ASSY(LF,RR)	2
43	92111000000	SPRING WASHER	4
44	92021000001	HEXAGON NUT	4
45	92141000000	PLAIN WASHER	4

46	P166F0600006	TAPPING SCREW	4
47	P166F0100006	LEN, BACK LAMP	2
48	P166F0400006	BULB, BACK LAMP	2
49	P566F910000	LEN, LICENCE LIGHT	1



FIG. 16

REAR SWING ARM ASSY. UPPER

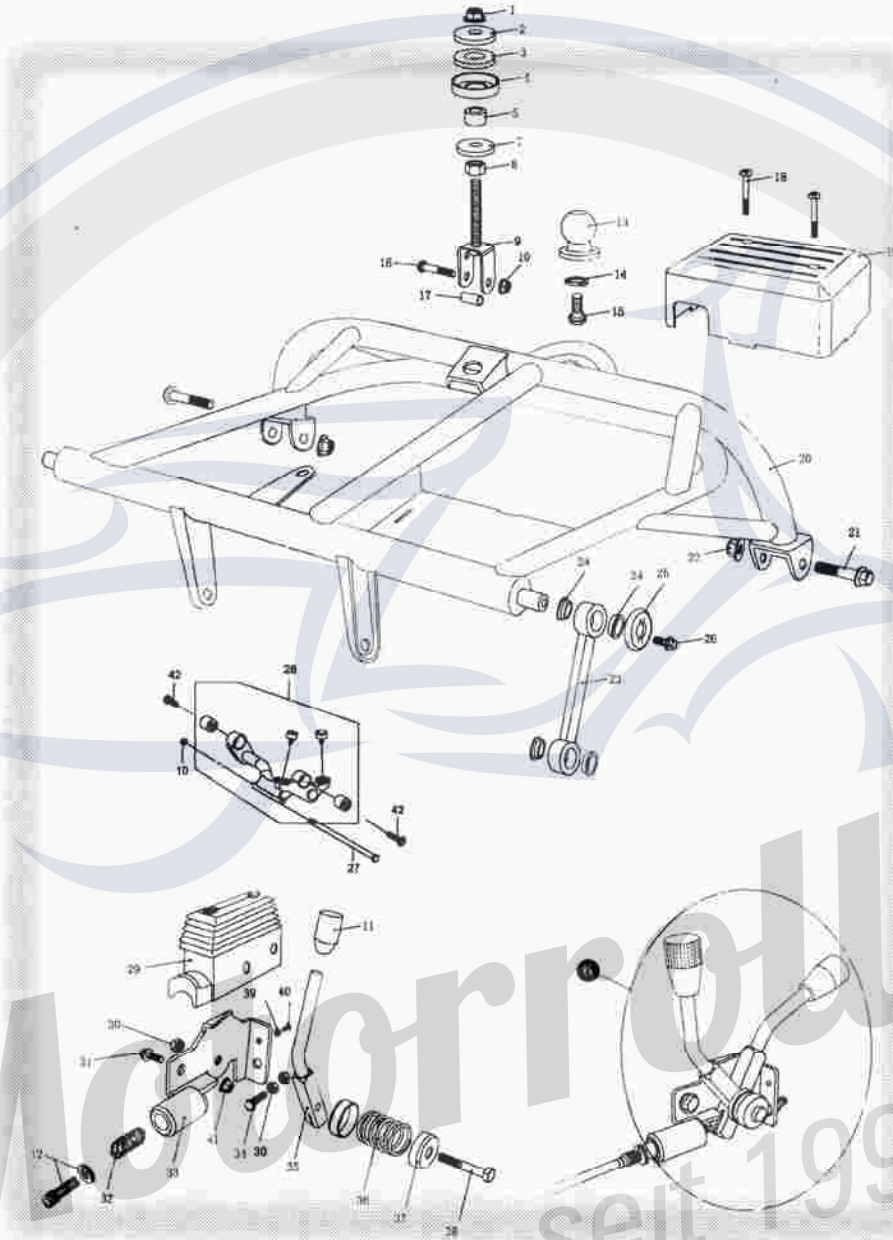
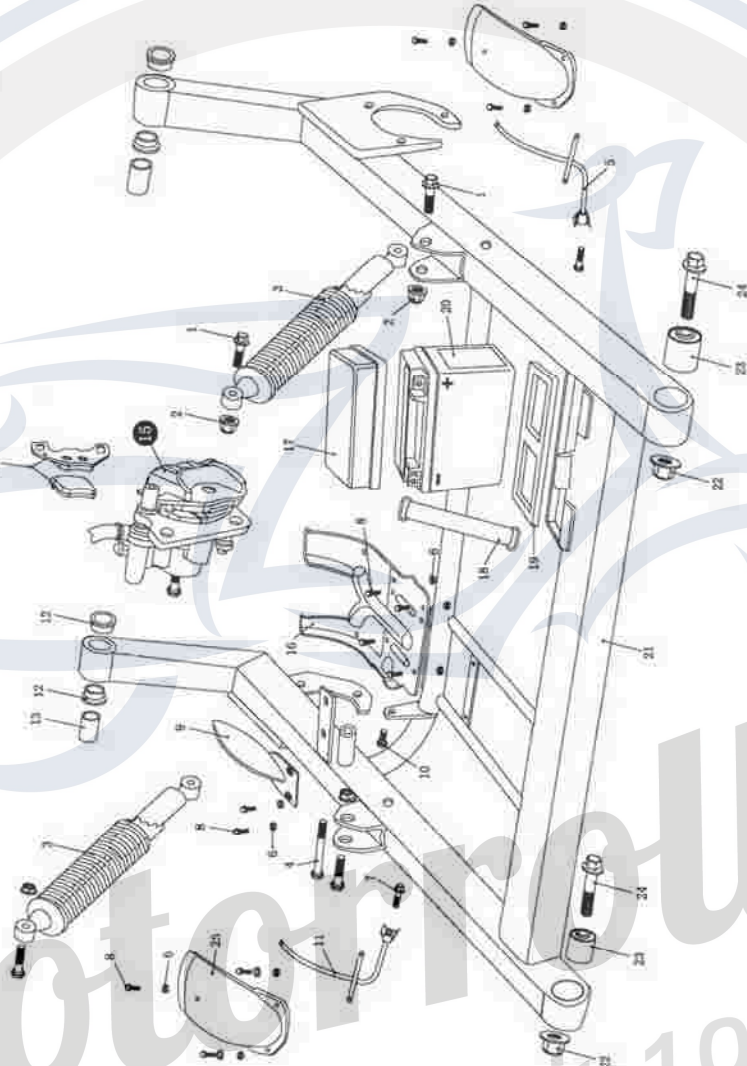


FIG. 16 REAR SWING ARM ASSY. UPPER

REF NO	PART NO	PART NAME	Q'TY
1	92041200003	NUT.FLANGE LOCK M12	1
2	B5486020000	WASHER.ENGINE MOUNT LINK	1
3	B5486030000	CUSHION.ENGINE MOUNT LINK	1
4	B5486040000	SPACER.ENGINE MOUNT LINK	1
5	B5486050000	COLLAR.ENGINE MOUNT LINK	1
6	B5451000000	PARING BRAKE/REVERSE LEVER ASS'Y	2
7	92141200012	WASHER. FLAT	1
8	92021200001	NUT M12	1
9	B5486010000	ENGINE MOUNT LINK	1
10	92061000001	U NUT	1
11	B545A060000	COVER.LEVER.GREEN/BLACK	2
12	B5451050000	ROD ADJUSTING.CABLE	2
13	B5676020000	TOW BALL	1
14	92111800000	WASHER. LOCK	1
15	90021804000	BOLT M18*40	1
16	90201004500	BOLT-WASHER M10*1.25*45	1
17	B5486070000	COLLAR.ENGINE MOUNT LINK	1
18	90070605500	SCREW. PAN M6*55	2
19	B5624060000	COVER.ELECTAIC ASS'Y	1
20	B5483010600	REAR SWING ARM ASS'Y., UPPER	1
21	90201206000	BOLT-WASHER M12*1.25*60	2
22	92041200003	NUT.FLANGE LOCK M12	2
23	B5483060000	CON'ROD	2
24	B5483070000	BUSH.CON'ROD	8
25	B5483080000	SPACER.CON'ROD	4
26	90200801600	BOLT-WASHER M8*1.25*16	4
27	90191018000	HEXAGON BOLT	1
28	B5486000000	ENGINE HANGER ASS'Y.	1
29	B5451020000	COVER.REVERSE LEVER	2
30	92400800002	NYLON LOCK NUT M8	6
31	90200802000	BOLT-WASHER M8*1.25*20	2
32	B5451070000	SPRING.CABLE	1
33	B5451010000	BRACKET.LEVER	2
34	90200803001	BOLT M8X30	2
35	B5451060000	LEVER.REVERSE,PARKING BRAKE	2
36	B5451080000	SPRING.LEVER	2
37	B5451090000	SPACER.LEVER	4
38	90200804000	BOLT-WASHER M8*1.25*40	2
39	92140500017	WASHER. FLAT	2
40	90070501200	SCREW. PAN M5*12	2
41	92040800003	NUT.FLANGE LOCK M8	2
42	90191005000	HEXAGON BOLT	2

FIG. 17

REAR SWING ARM



Motorroller.de
- seit 1993 -

FIG. 17 REAR SWING ARM

REF NO	PART NO	PART NAME	Q'TY
1	90201004000	BOLT-WASHER M10*1.25*40	4
2	92041000003	NUT.FLANGE LOCK M10	4
3	B5481000000	CUSHION ASS'Y.RR	2
4	90200810000	BOLT STRAP M8*1.25*100	1
5	B5634020000	BRACKET REAR FENDER.L	1
6	92400600001	NYLON LOCK NUT M6	12
7	90200804500	BOLT-WASHER M8*1.25*45	2
8	90200601600	BOLT-WASHER M6*16	12
9	B5634010000	COVER, DISC.RR	1
10	90200801201	BOLT STRAP M8*1.25*12	1
11	B5634030000	BRACKET REAR FENDER, RH	1
12	B5483040000	BUSH.SWING ARM	4
13	B5483050000	COLLAR.SWING ARM	2
14	B5407410000	PAD SET.RR.BRAKE	1
15	B5406600000	CALIPER ASS'Y., RR	1
16	B5406610000	GUARD.CHAIN.DISC	1
17	B5624030000	COVER.BATTERY	1
18	B5583030000	BAND, BATTERY	1
19	B5583010000	CUSHION.BATTERY UNDER	1
20	M2583000000	BATTERY	1
21	B5483000000	RR.SWING ARM COMP., UNDER	1
22	92041200003	NUT.FLANGE LOCK M12	2
23	B5701020000	CUSHION BUSH.SWING ARM	2
24	90201206000	BOLT-WASHER M12*1.25*60	2
25	B5634000000	FENDER, RR	2
25	B56340001M0	FENDER, RR (RED)	2
25	B56340003D0	FENDER, RR (GREEN)	2
25	B56340004X0	FENDER, RR (BLUE)	2

Motorroller.de
- seit 1993 -

FIG. 18

REAR HOUSING



Motorroller.de
- seit 1993 -

FIG. 18 REAR HOUSING

REF NO	PART NO	PART NAME	Q'TY
1	90200802200	BOLT-WASHER M8*1.25*22	4
2	B5406800000	DISC.RR.BRAKE	1
3	92040800003	NUT.FLANGE LOCK M8	14
4	B5407430000	REAR AXLE	1
5	B5485000000	DRIVING CHAIN	1
6	B5485020000	REAR SPROCKET	1
7	90200802700	BOLT-WASHER M8*1.25*27	4
8	B5407490000	DUST SEAL	2
9	B5407440000	HOUSING COMP.RR.AXLE BRG	2
10	B5407450000	BEARING	2
11	B5407460000	BEARING BASE	2
12	90200804000	BOLT-WASHER M8*1.25*40	6
13	B5407170000	DUST SEAL	2
14	90191003100	BOLT. TIRE M10*1.25*31	8
15	B5407130000	HUB.REAR AXLE	2
16	B540G3200001	REAR TIRE (ON ROAD)	2
16	B540G320000	REAR TIRE (OFF ROAD)	2
17	B5407140770	RIM, RR (SILVER)	2
18	92041000003	NUT.FLANGE LOCK M10	8
19	B5407470000	HOLDER.RR.COVER	2
20	B5407480000	SPACER.RR.WHEEL	2
21	B5407160000	NUT.CASTLE	2
22	93520403000	PIN.COTTER 4*30	2
23	B5407150000	COVER.RR.HUB	2
24	B5407100000	REAR WHEEL ASS'Y	2
25	X040B330000	VALVE, TIRE	2
26	B5421260000	FIXED PLATE, SENSOR	1
27	X0561062000	FIXED PLATE 2, SENSOR	1
28	90050301000	C-R MACHINE TRUSS HD, TAPPING SCREW	2
29	B5561000000	SPEEDOMETER ASSY.	

Motorroller.de
- seit 1993 -

FIG. 19

WIRE HARNESS/ELECTRICAL

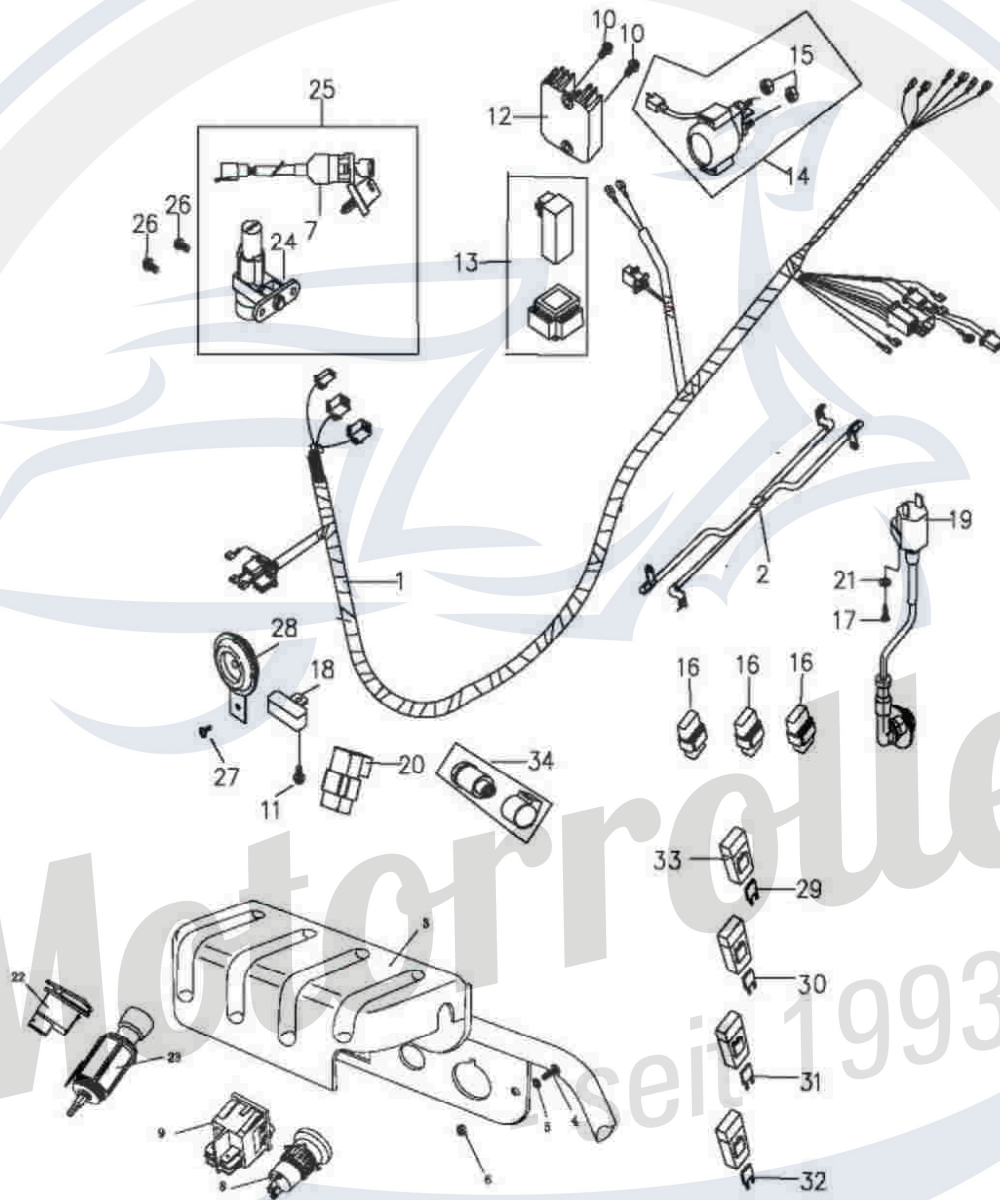


FIG. 19 WIRE HARNESS / ELECTRICAL

REF NO	PART NO	PART NAME	Q'TY
1	B5581600000	WIRE HARNESS.	1
2	B5583020000	BATTERY (+,-) LINE COMP	1
3	B5543910000	COVER. SWITCH	1
4	90070501500	SCREW.PAN M5*15	2
5	92140500017	WASHER. FLAT	2
6	92400500000	NYLON LOCK NUT M5	2
7	B5552000000	IGNITION SWITCH	1
8	B5561010000	PARKING BUTTON	1
9	B5561020000	HEADLAMP SWITCH	1
10	90190602000	HEXAGON FLANGE BOLT	2
11	90190601200	HEXAGON FLANGE BOLT	1
12	ES584000000	RECTIFIER COMP.REGULATE	1
13	C1582001000	UNIT COMP.,C.D.I	1
14	C1581001000	STARTING RELAY	1
15	92030600004	HEXAGON NUT	2
16	ES581200000	RELAY	3
17	90070502000	C-R MACHINE TRUSS HD, TAPPING SCREW	1
18	P15866000002	RESISTOR COMP.	1
19	B5584600000	COIL COMP.IGNITION ASSY.	1
20	C1582500000	HEADLAMP CONTROLLER	1
21	92110500000	SPRING LOCK WASHER	1
22	B5561040000	HORN BUTTON	1
23	B5561050000	CIGAR LIGHTER	1
24	B5553000000	BURGLARGROOF LOCK COMP.	1
25	B5551000000	LOCK COMP.	1
26	90260601001	HEAD INNER BOLT	2
27	90190601500	HEXAGON FLANGE BOLT(M6*15)	1
28	C1583600000	HORN.	1
29	98701205000	FUSE 5A	1
30	98701207500	FUSE 7.5A	1
31	98701210000	FUSE 10A	1
32	98701215000	FUSE 15A	1
33	98701200000	CASE, FUSE	4
34	P2586011000	SIGNAL FLASHER	1

Motorroller.de
- seit 1993 -

WARNING STICKERS

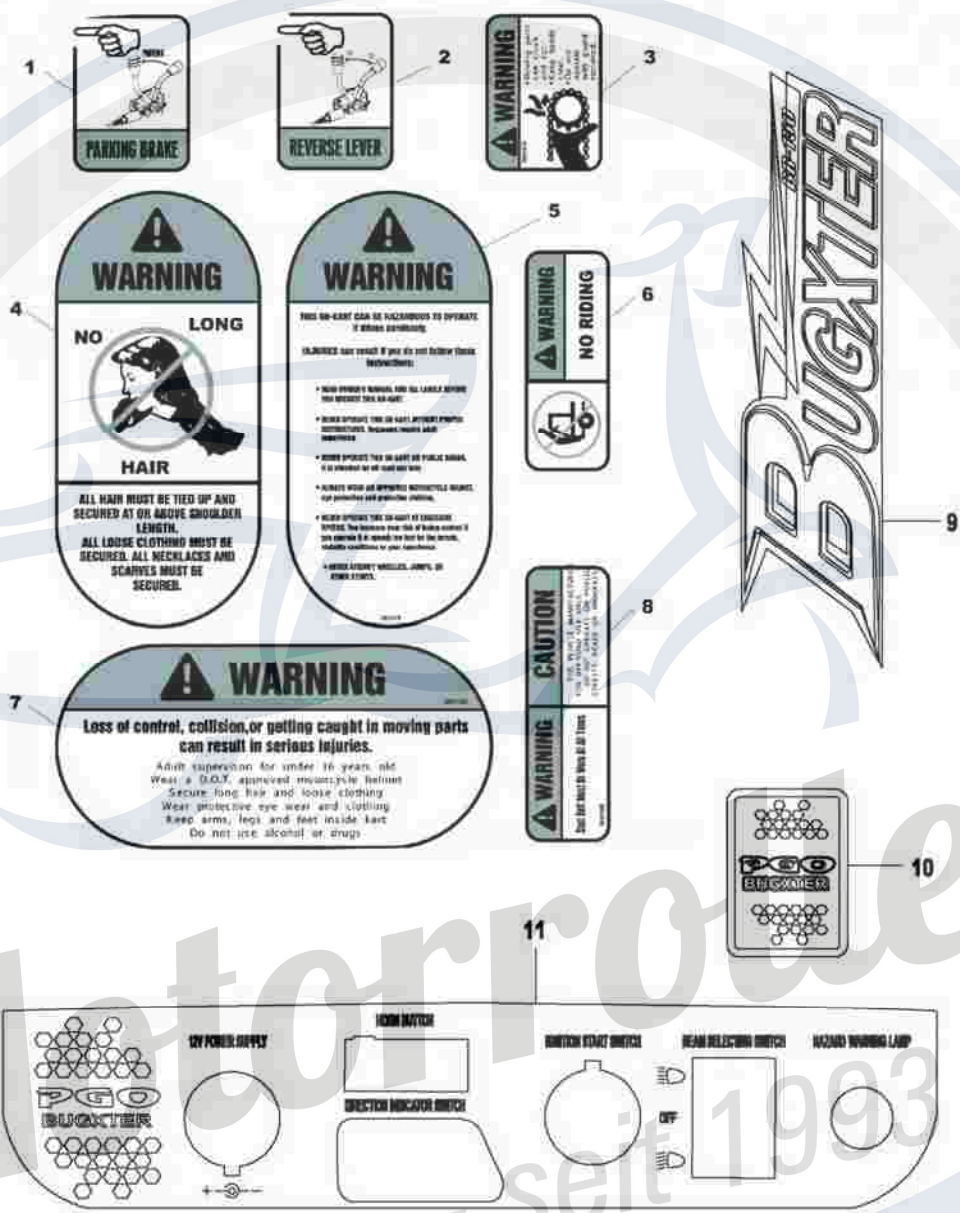


FIG. 20 WARNING LABELS

REF NO	PART NO	PART NAME	Q'TY
1	B5603020000	LABEL.PARKING BRAKE	1
2	B5603100000	LABEL.REVERSE LEVER	1
3	B5603110000	LABEL.CHAIN GUARD	1
4	B5603120000	LABEL.NO LONG HAIR	1
5	B5603130000	LABEL.WARNING	1
6	B5603140000	LABEL.NO CLIMBING	1
7	B5603150000	LABEL.WARNING	1
8	B5603160000	LABEL.SEAT BELT	1
9	B5601010000	MODEL LABEL. ASSY	3
10	B5601020000	WINDSHIELD LABEL	1
11	B5603010000	IGNITION SWITCH LABEL	1
12	B5352010000	USER' MANUAL ASSY.	1



Motorroller.de
- seit 1993 -