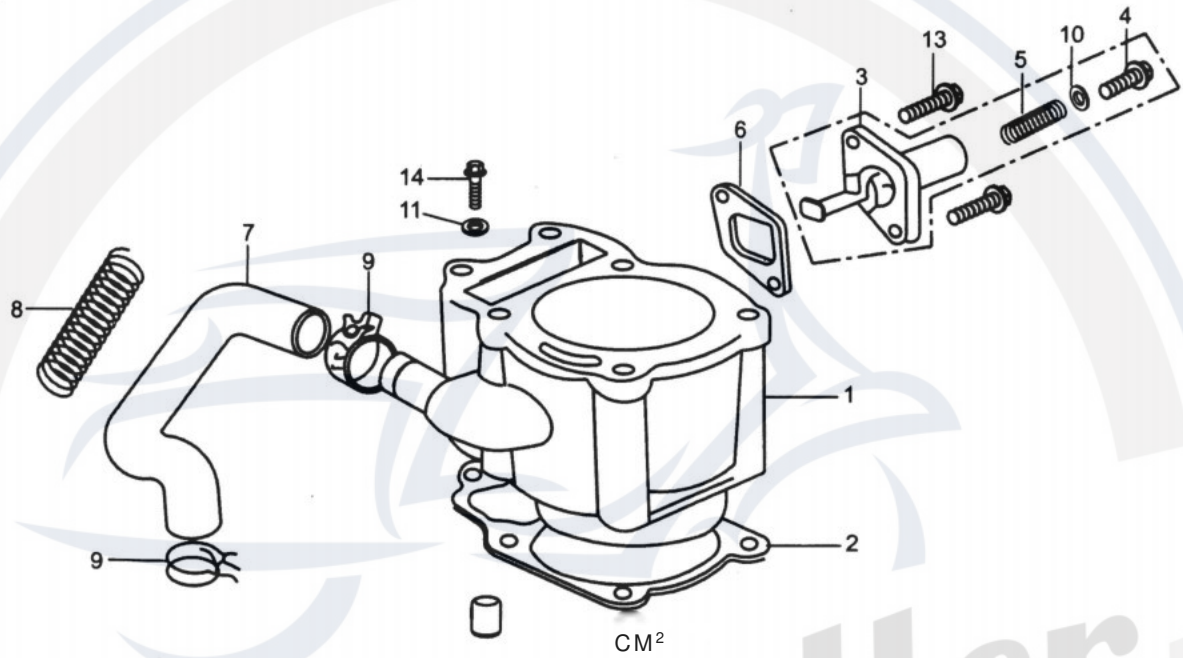


CYLINDER COMP.



CYLINDER COMP.			
REF NO.	PART NO.	DESCRIPTION	REGD NO.
1	172MM-023100	CYLINDERCOMP	1
2	172MM-023002	CYLINDER SEAL	1
3	152MI-023300	TENSIONER	1
4	152MI-023007	SPRING SEAT FLANGE BOLT	1
5	152MI-023006	SPRING	1
6	152MI-023004	TENSIONFR SEAL	1
7	172MM-023007	WATER INFLOW RUBBER TUBE	1
8	172MM-023009	WATER TUBE SHEATH	1
9	QC/T621-1999-B24	WIRE CLAMP	2
10	152MI-023005	WASHER 8.5	1
11	GB/T848-85-6-D	SMALL WASHER	1
12	152MI-021005	DOWEL PIN 10x14	2
13	152MI-023008	FLANGE BOLT M6x18	2
14	152MI-080013	FLANGE BOLT M6x22	1

FIG.2

CYLINDER COVER ASSY.(I)

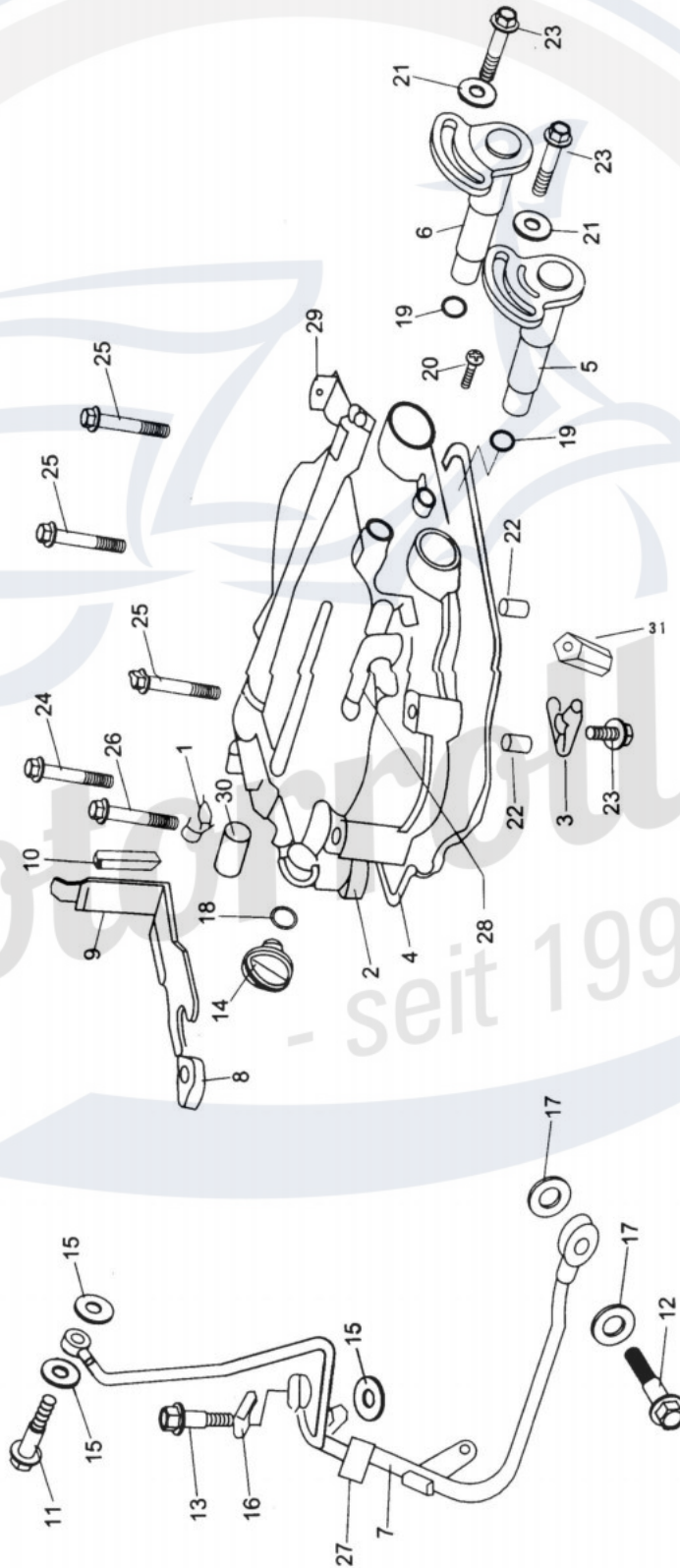


FIG. 3

CYLINDER COVER ASSY.(2)

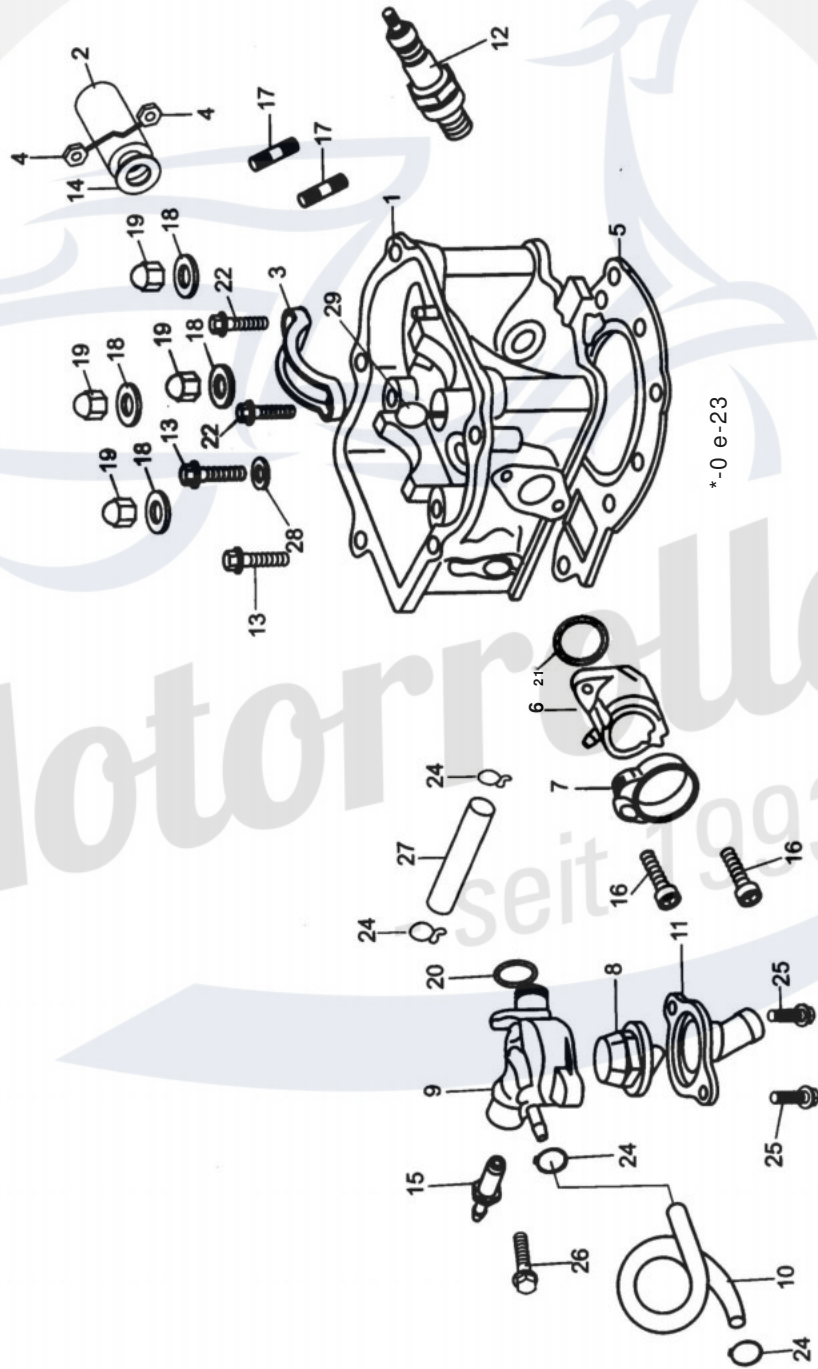


FIG. 4

CRANK CASE ASSY

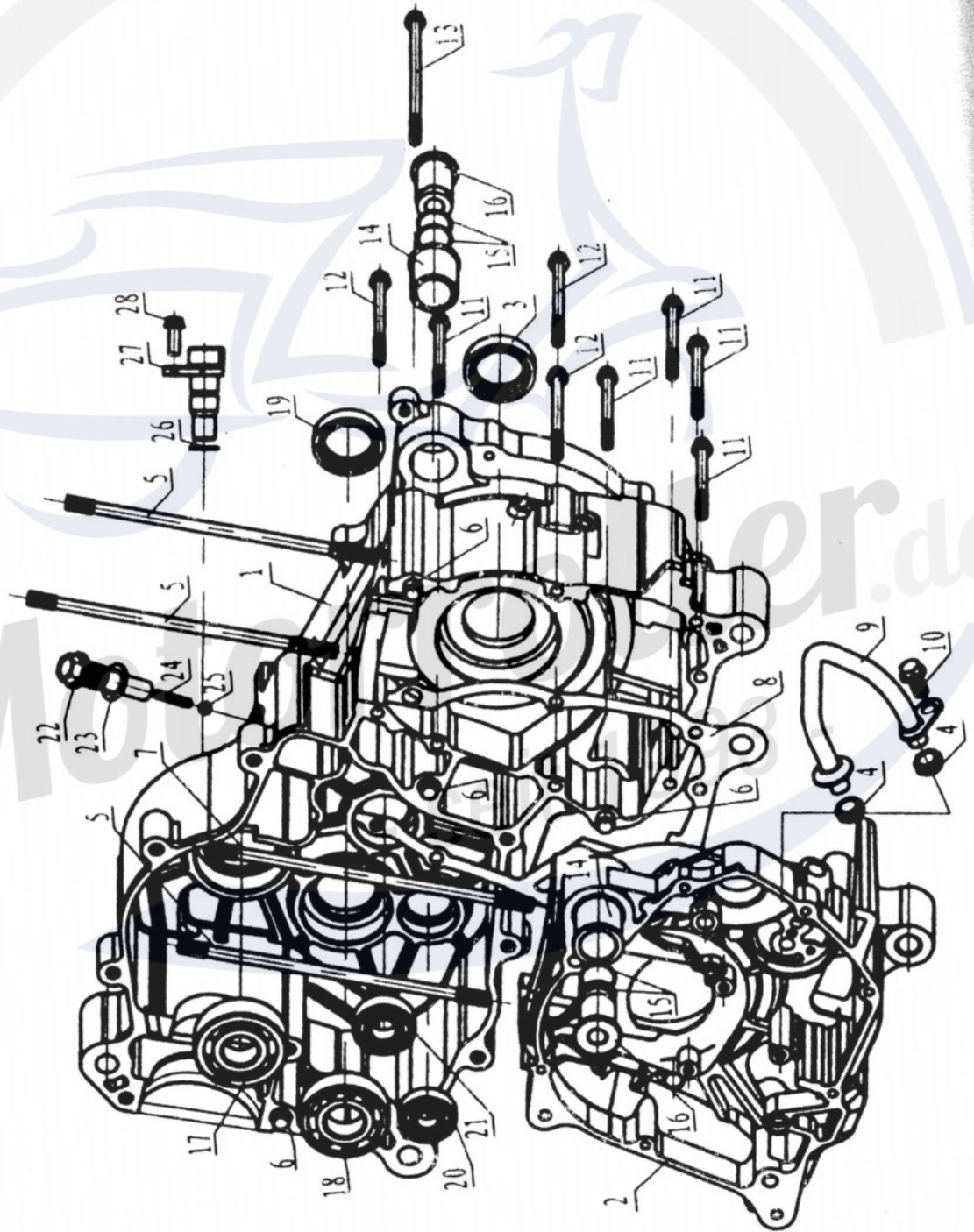
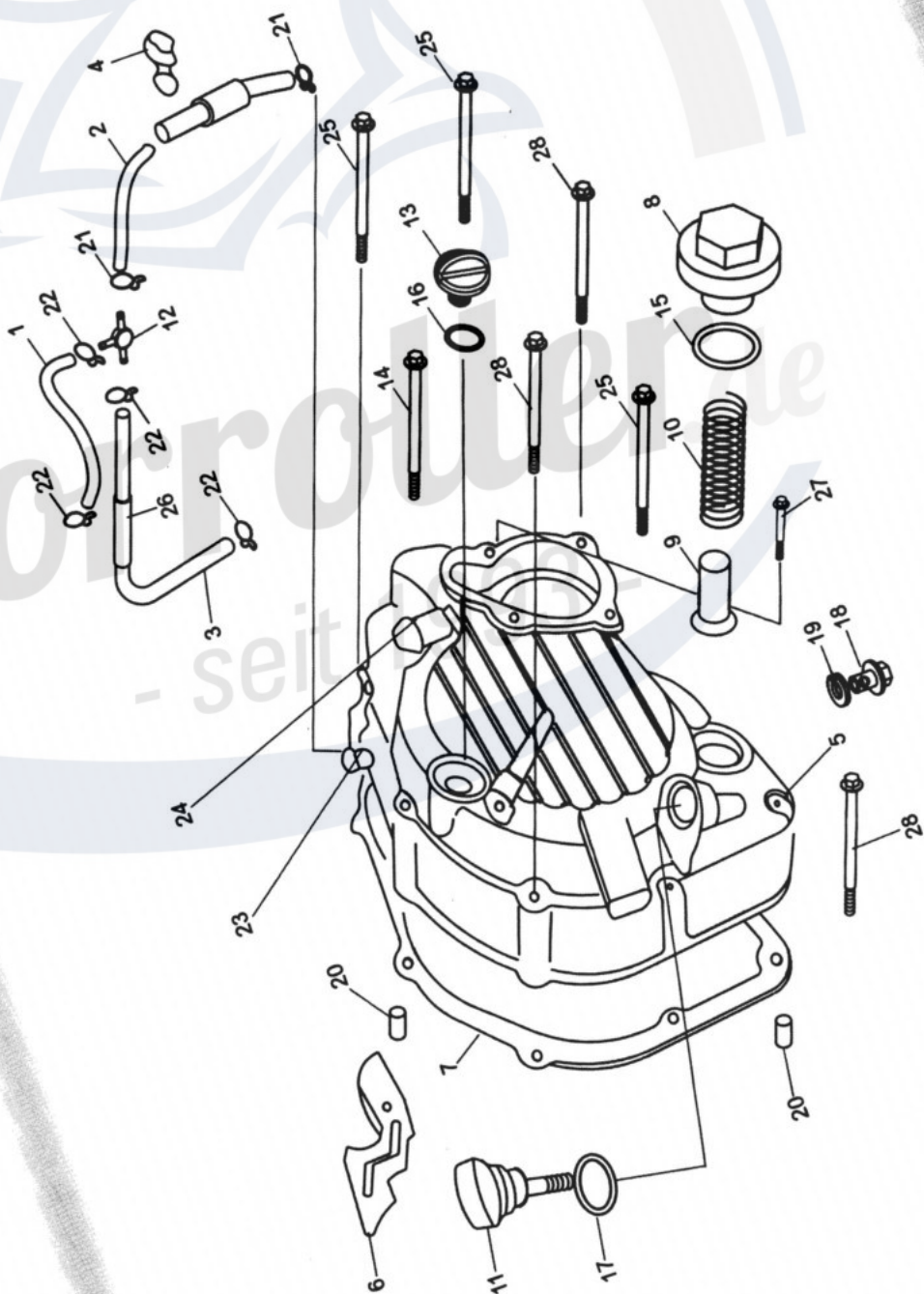
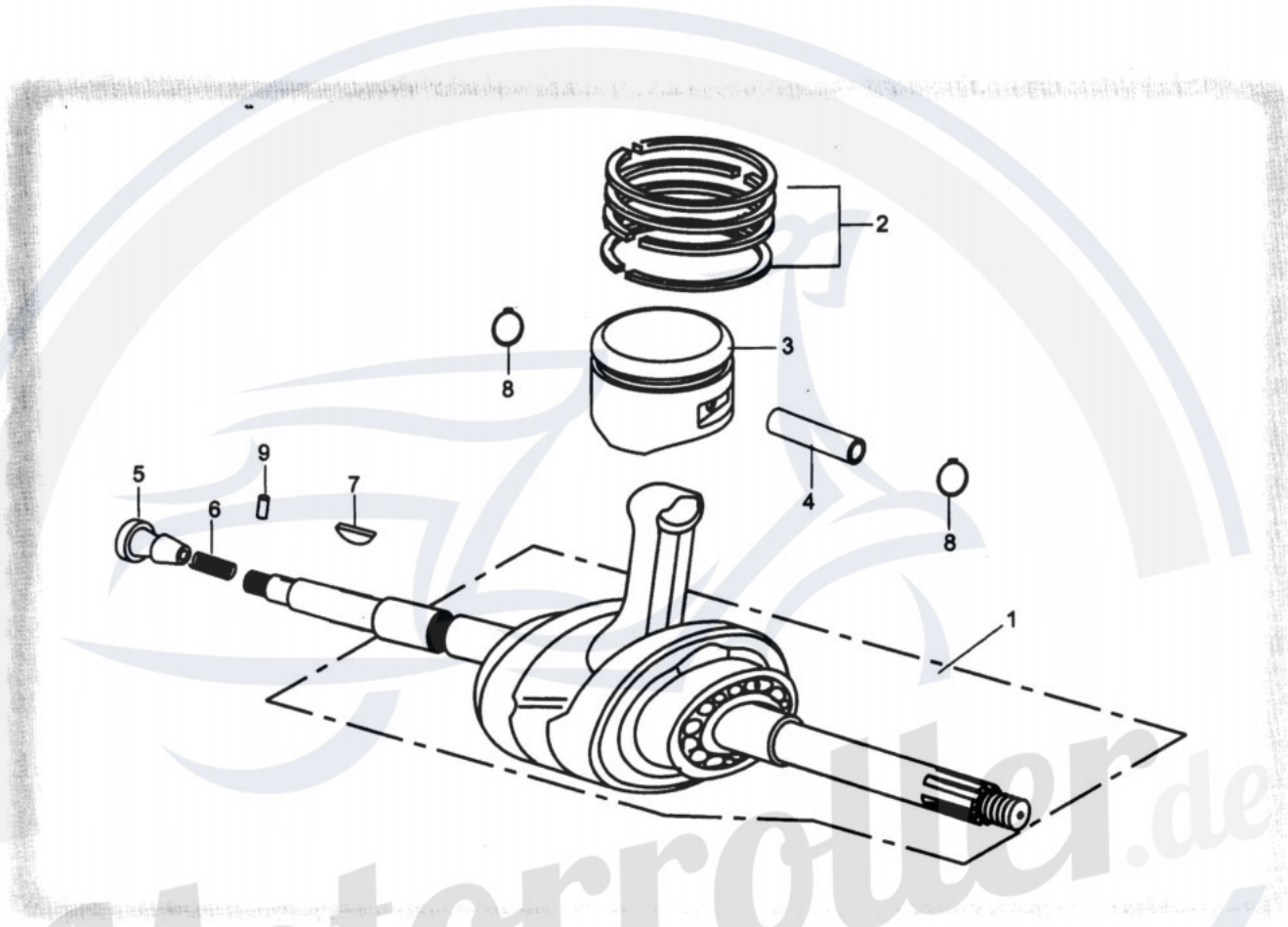


FIG.5

RGHT SIDE COVER ASSY.



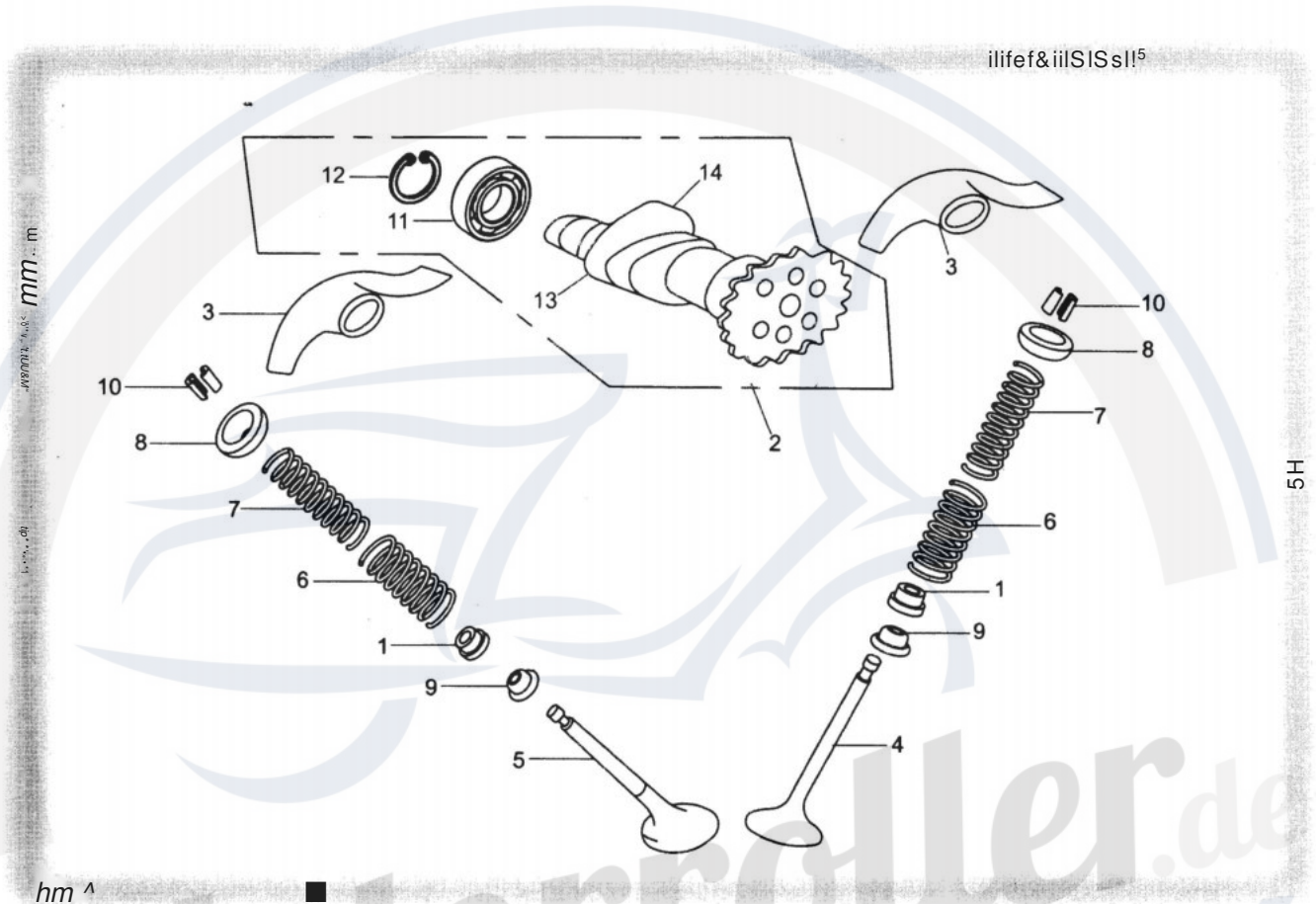
CRANKSHAFT CON'ROD & PISTON ASSY.,



CRANKSHAFT CON'ROD & PISTON ASSY.

REF NO.	PART NO.	DESCRIPTION	REGD NO.
1	172MM-041000	CON'RODASSY.	1
	172MM-040008	THE FIRST PISTON RING	1
2	172MM-040009	THE SECOND PISTON RING	1
	172MM-042000	OIL RING ASSY.	1
3	172MM-040005	PISTON	1
4	172MM-040007	PISTON PIN	1
5	152M1-040011	OILTUBE JOINT	1
6	152MI-040010	OILTUBE JOINT SPRING	1
7	152MI-040006	WOODRUFF KEY	1
8	172MM-040006	PISTON PIN CIRCLIP	2
9	GB/T119-2000	COLUMN PIN 2x14	1

VALVE TRANNY ASSY.M)

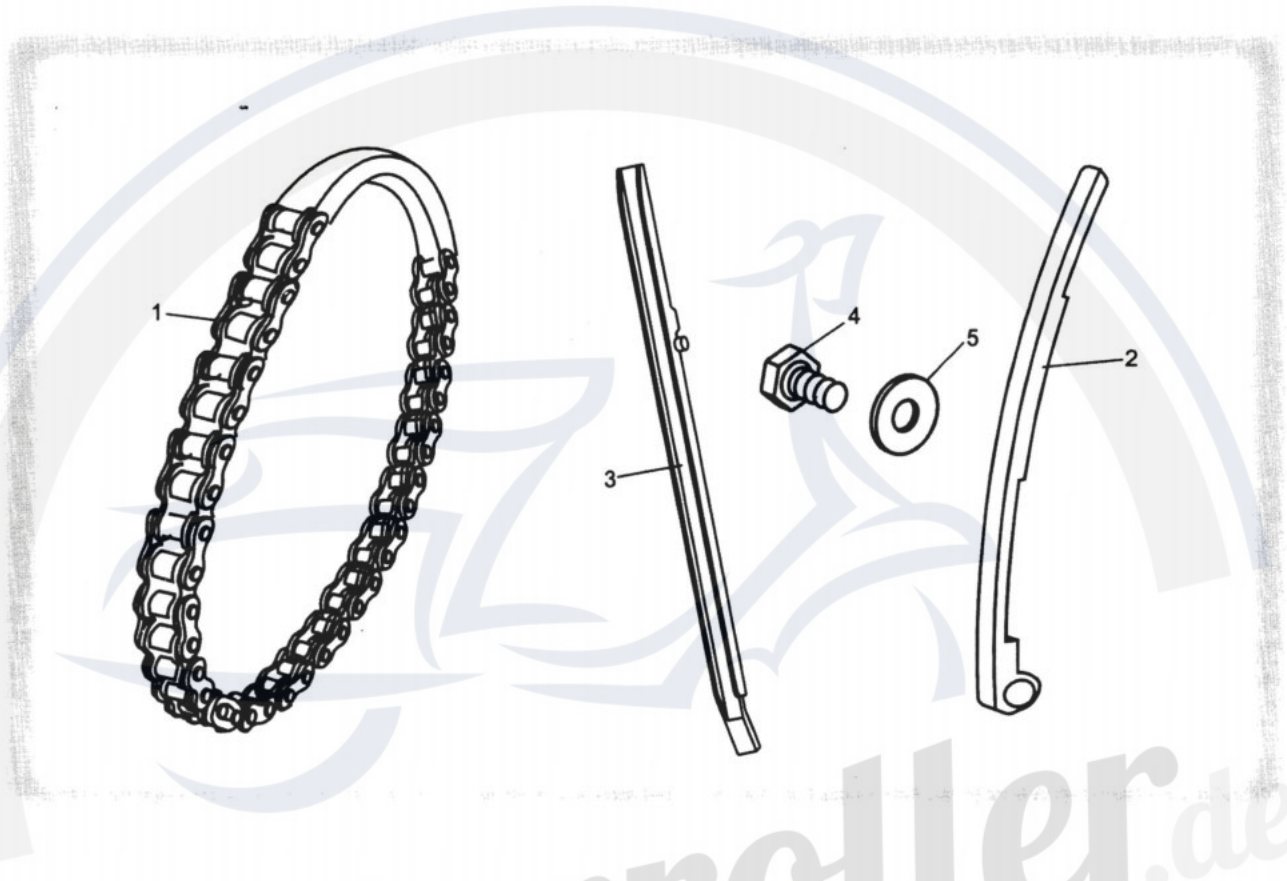


hm ^

5H

VALVE TRANNY ASSY.M)			
REF NO.	PART NO.	DESCRIPTION	REGD NO.
1	152MI-022500	VALVE TAPPET SEAL	2
2	172MM-022300	VALVE CAM	1
3	152MI-021007	ROCKER	2
4	172MM-022001	INLET VALVE	1
5	172 MM-022 005	EX.VALVE	1
6	172MM-022002	OUTER VALVE SPRING	2
7	152MM-022003	INNER VALVE SPRING	2
8	152MI-022005	SPRING VALVE DISC	2
9	152MI-022001	SPRING VALVE SEAT	2
10	152MI-022006	VALVE CLIP LOCK	4
11	NTN:16002	ROLL BEARING	2
12	GB894 1-86-15	BEARING CIRCLIP	1
13	172MM-022310	CHAIN WHEEL	1
14	172MM-022301	CAMSHAFT	1

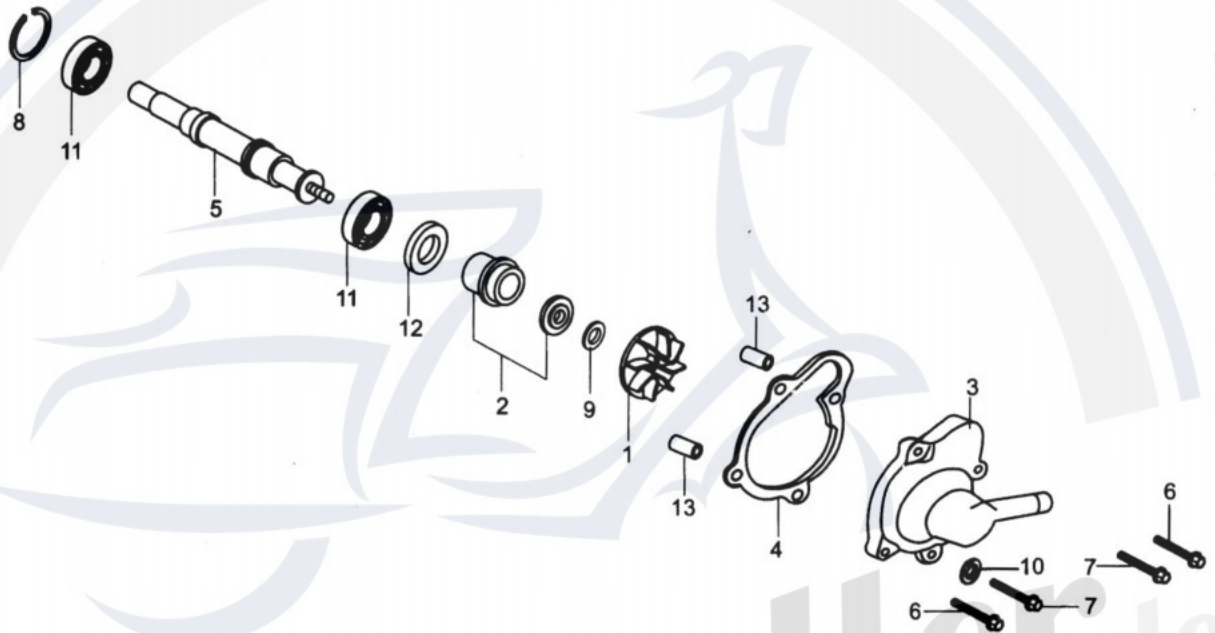
C VALVE TRANNY ASSY.(2)



VALVE TRANNY ASSY.(2)

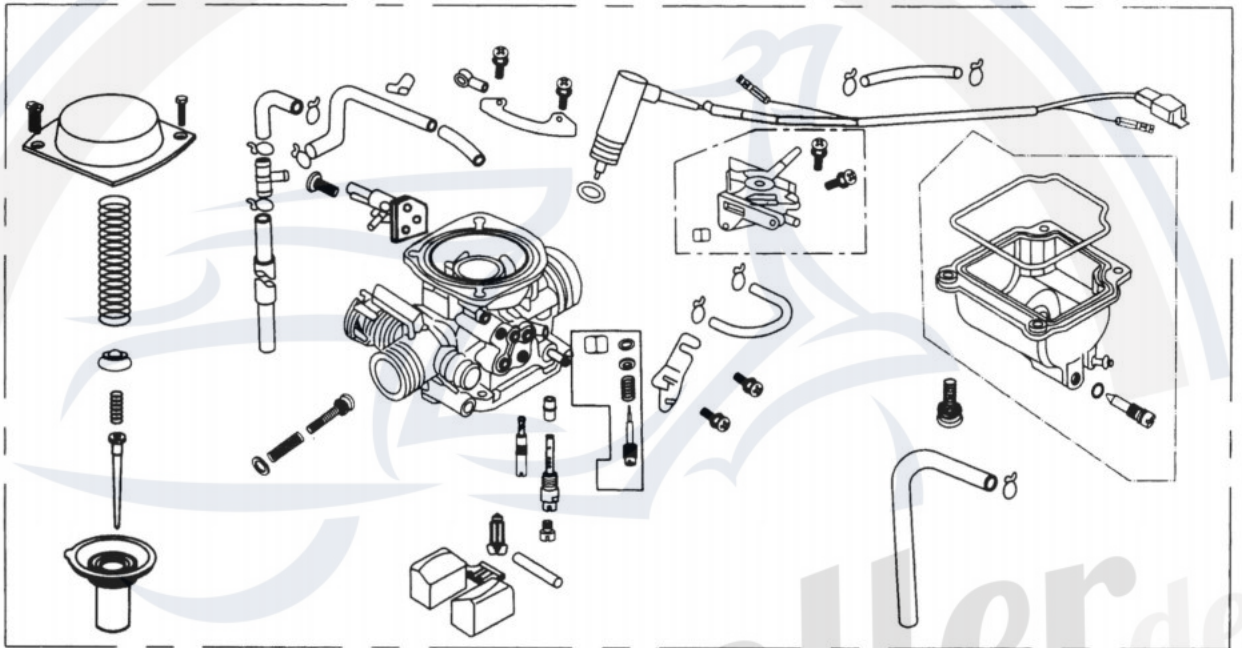
REF NO.	PART NO.	DESCRIPTION	REGD NO.
1	172MM-022200	TIME CHAIN	1
2	172MM-023200	TENSIONER	1
3	172MM-023001	CHAIN GUIDE PLATE	1
4	GB96-85-6-D.Zn	BIG WASHER	1
5	GB/T5781-2000	HEX FLANGE BOLT M6x12	1

WATER PUMP ASSY.



WATER PUMP ASSY			
REF NO.	PART NO.	DESCRIPTION	REGDNO.
1	172MM-080004	WATER PUMP IMPELLER	1
2	152MI-081000	WATER SEAL	1
3	172MM-080003	WATER PUMP HOUSING	1
4	172MM-080002	WATER PUMP HOUSING SEAL	1
5	172MM-080001	WATER PUMP SHAFT	1
6	152MI-013009	FLANGE BOLT M6x40	2
7	152MI-02017	FLANGE BOLT M6x25	2
8	GBT893 1-86-19	CIRCLIP	1
9	152MI-080007	WASHER 7.5x13x1.2	1
10	152MI-080011	WASHER 6x12x1	1
11	NTN:6800	ROLL BEARING	2
12	172MM-08005	OIL SEAL 10x20x5	1
13	152MI-080008	DOWEL PIN 8x14	2

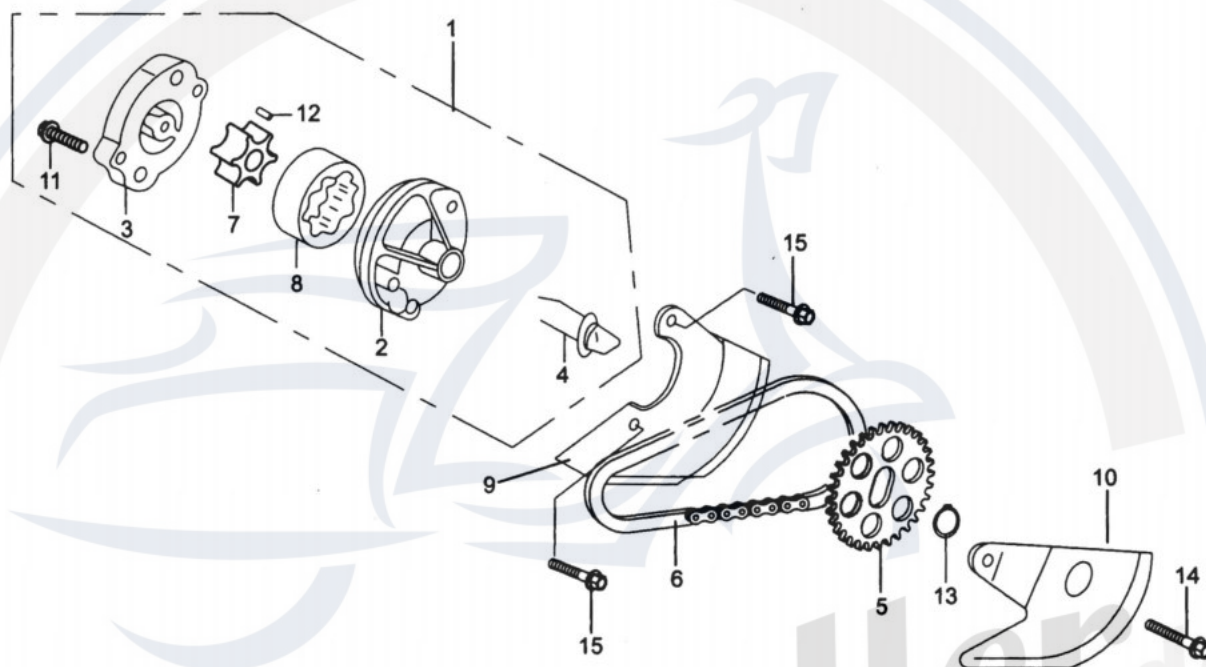
CARBURETOR COMP.



CARBURETOR COMP.

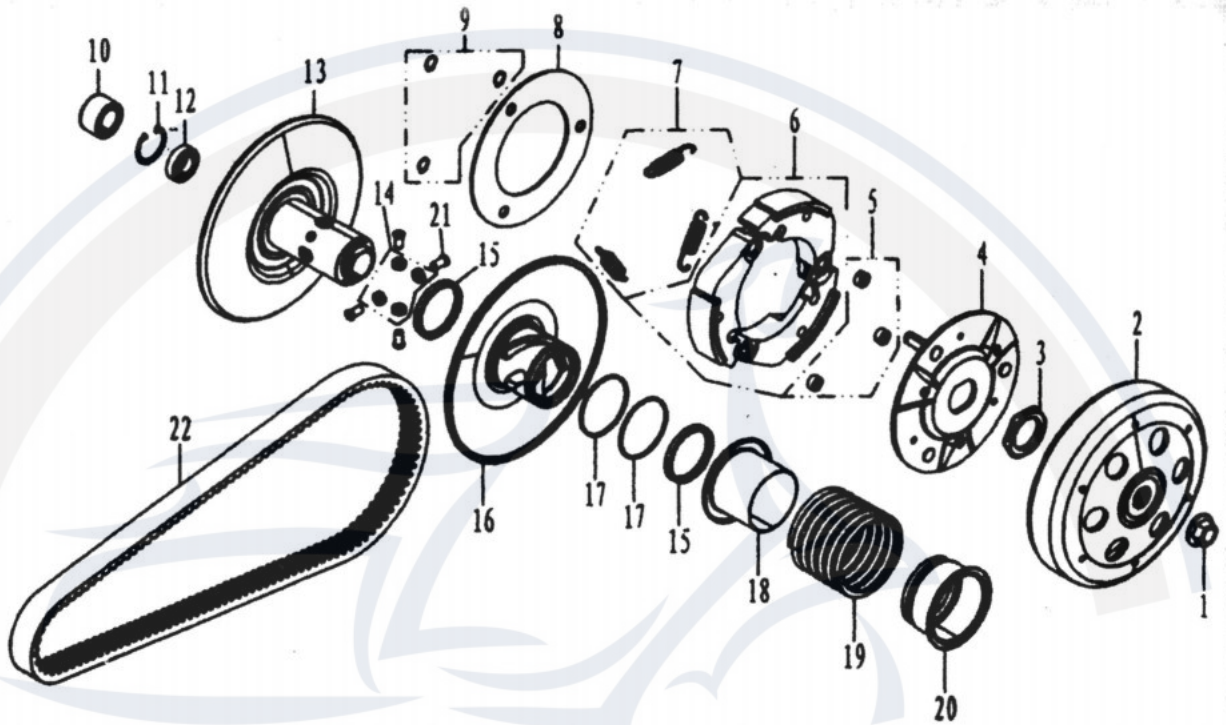
REF NO.	PART NO.	DESCRIPTION	REGD NO.
1	172MM-100000	CARBURETOR COMP.	1

OIL PUMP ASSY.



OIL PUMP ASSY			
REF NO.	PART NO.	DESCRIPTION	REGD NO.
1	152MI-071000	OIL PUMP ASSY	1
2	152MI-071002	OIL PUMP	1
3	152MI-071003	OIL PUMP COVER PLATE	1
4	152MI-071001	OIL PUMP SHAFT	1
5	152MI-070001	OIL PUMP SPROCKET	1
6	152MI-073000	OIL PUMP CHAIN	1
7	152MI-071004	INNER OIL PUMP ROTOR	1
8	152MI-071005	OUTER OIL PUMP ROTOR	1
9	152MI-070002	OIL PUMP DIVISION PLATEA	1
10	152MI-072000	OIL PUMP DIVISON PLATEB	1
11	GB878-85	FLANGE BILT M3 x 12	1
12	152MI-0710006	DOWEL PIN 4x6.5	1
13	GB897 1-86-10	CIRCLIP	1
14	152MI-021019	FLANGE BOLT M6 x 12	1
15	152MI-071007	FLANGE BOLT M6 x 28	2

CLUTCH ASSY.

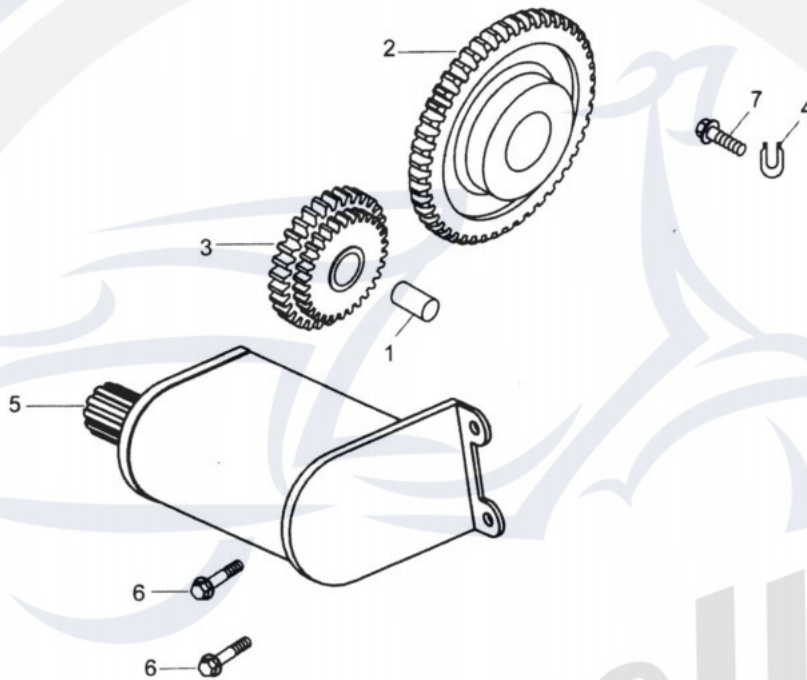


CLUTCH ASSY.

REF NO.	PART NO.	DESCRIPTION	REGD NO.
1	172MM-052008	NUT M12X1.25	1
2	172MM-A-052500	OUTER WHEEL,CLUTCH	1
3	172MM-052005	FLAT NUT M30X1	1
4	172MM-A-052400	DRIVE DISC	1
5	172MM-A-052200	ABSORBER RUBBER	3
6	172MM-A-052600	CENTRI FUGAL BLOCK	3
7	172MM-A-052006	RETURN SPRING	3
8	172MM-A-052003	SIDE DISC	1
9	GB/T896-1986-9	CIRCLIP	3
10	172MM-052310	ROLL BEARING 22X29X18	1
11	GB/T893.1-1986-28	CIRCLIP	1
12	GB/T278-1989-1060902	BEARING	1
13	172MM-A-052300	DRIVEN WHEEL	1
14	172MM-A-052001	GUIDE ROUER	4
15	172MM-A-052104	DRIVEN WHEEL OIL SEAL	2
16	172MM-A-052100	MOVABLE DIVEN WHEEL	1
17	GB3452.1-1992-46.2X1.8	O RING	2
18	172MM-A-052007	SEAL BUSH	1
19	172MM-A-052004	CLUTCH SPRING	1
20	172MM-A-052009	BUSH	1
21	172MM-A-052002	GUIDE PIN	4
22	172MM-B-053000	DRIVE BELT	1

**

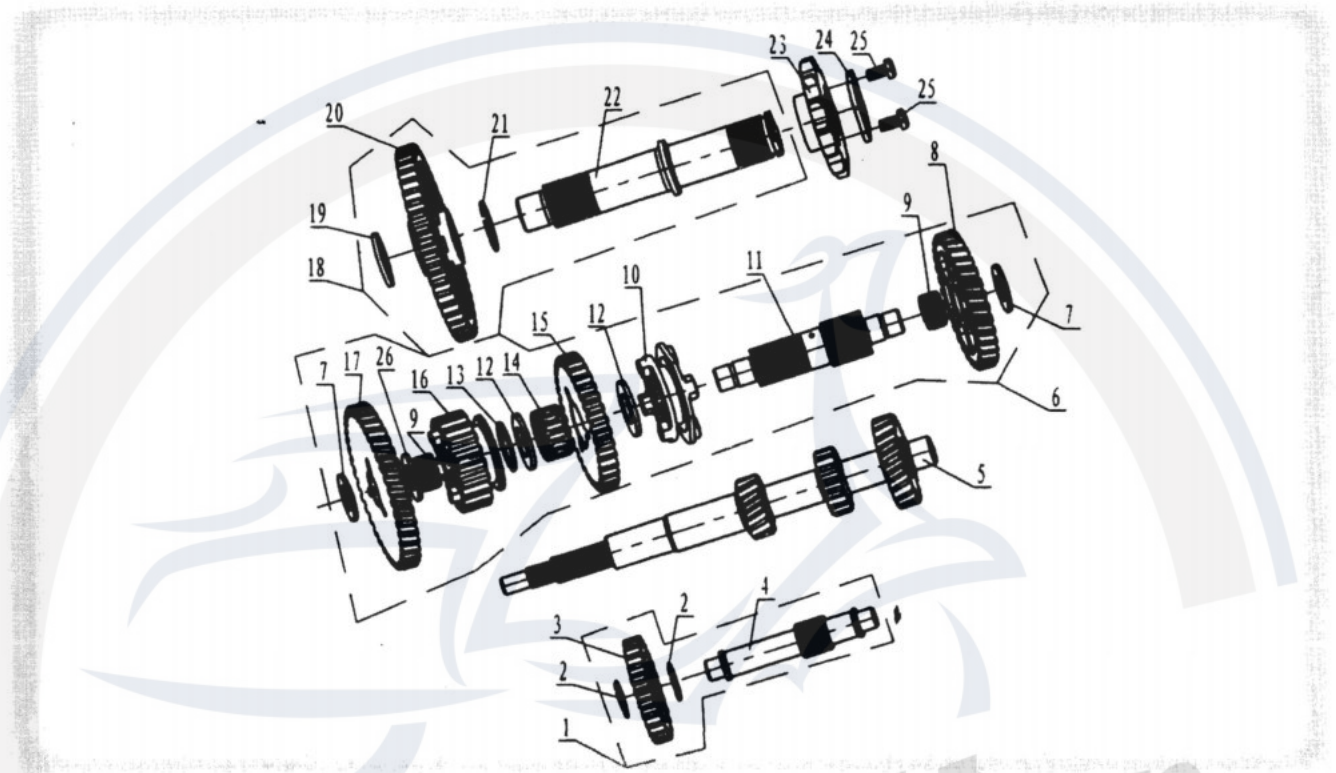
ELECTRIC STARTER ASSY.



ELECTRIC STARTER ASSY.

REF NO.	PART NO.	DESCRIPTION	REGD NO.
1	172MM-090001	DOUBLE-GEAR AXLE	1
2	172MM-092000	DRIVEN GEAR	1
3	172MM-091000	DOUBLE-GEAR	1
4	172MM-090007	FIX PLATE	1
5	172MM-093000	START MOTOR	1
6	152MI-080013	FLANGE BOLT M6*22	2
7	172MM-090008	FLANGE BOLT M6*14	1

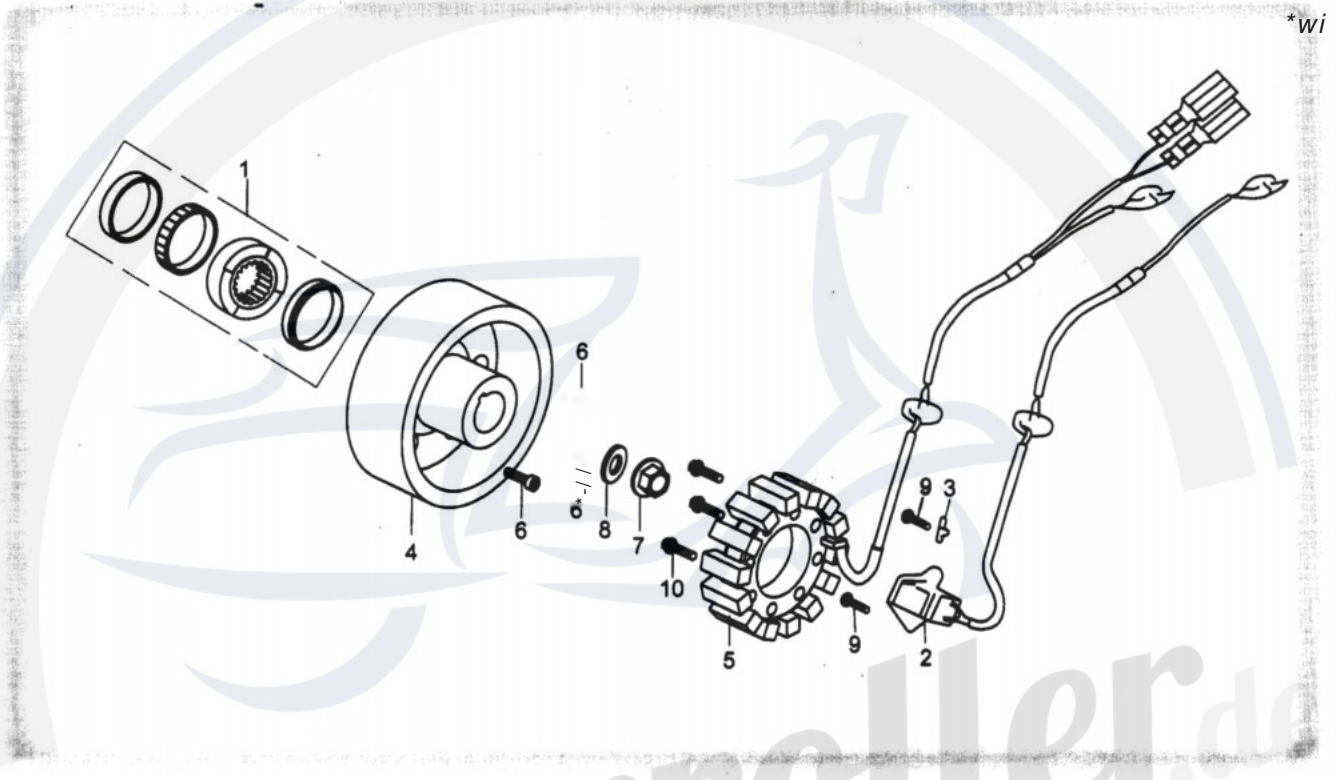
REDUCTION BOX ASSY(172MM - C)



REDUCTION BOX ASSY(172MM -C)

REF NO.	PART NO.	DESCRIPTION	REGD NO.
1	172MM-B-067000	TRANSITION GEAR ASSY	1
2	GB/T894.1-1986 20	CIRCLIP	2
3	172MM-B-067002	TRANSITION GEAR	1
4	172MM-B-067001	TRANSITION GEAR SHAFT	1
5	172MM-B-060001	CHIEF SHAFT	1
6	172MM-B-062000	SECONDARY SHAFT ASSY	1
7	172MM-B-062006	WASHER 15X28X2	2
8	172MM-B-062002	DRIVEN GEAR	1
9	NTN:K16X20X10	NEDDLE BEARING	2
10	172MM-B-062009	GEAR SHIFTING BUSH	1
11	172MM-B-062001	SECON DARY SHAFT	1
12	172MM-B-062007	WASHER 24X33X2	2
13	GB/T894.1-86-24	CIRCLID	1
14	K24X28X 10	NEDDLE BEARING	1
15	172MM-B-062003	DRIVEN GEAR,REVERSE	1
16	172MM-B-062005	DRIVE GEAR,OUTPUT	1
17	172MM-B-062004	DRIVEN GEAR,LOW SPEED	1
18	172MM-C-063000	OUTPUT SHAFT ASSY	1
19	172MM-C-063002	WASHER 20X33X2.5	1
20	172MM-B-063005	OUTPUT DRIVEN GEAR	1
21	CF188-061007	CIRCLIP 25	1
22	172MM-C-063001	OUTPUTSHAFT	1
23	172MM-C-060004	SPROCKET	1
24	172MM-C-060005	PRESS PLATE SPROCKET	1
25	172MM-C-060009	BOLT M6x12	2
26	172MM-B-062008	WASHER 16X28X2	1

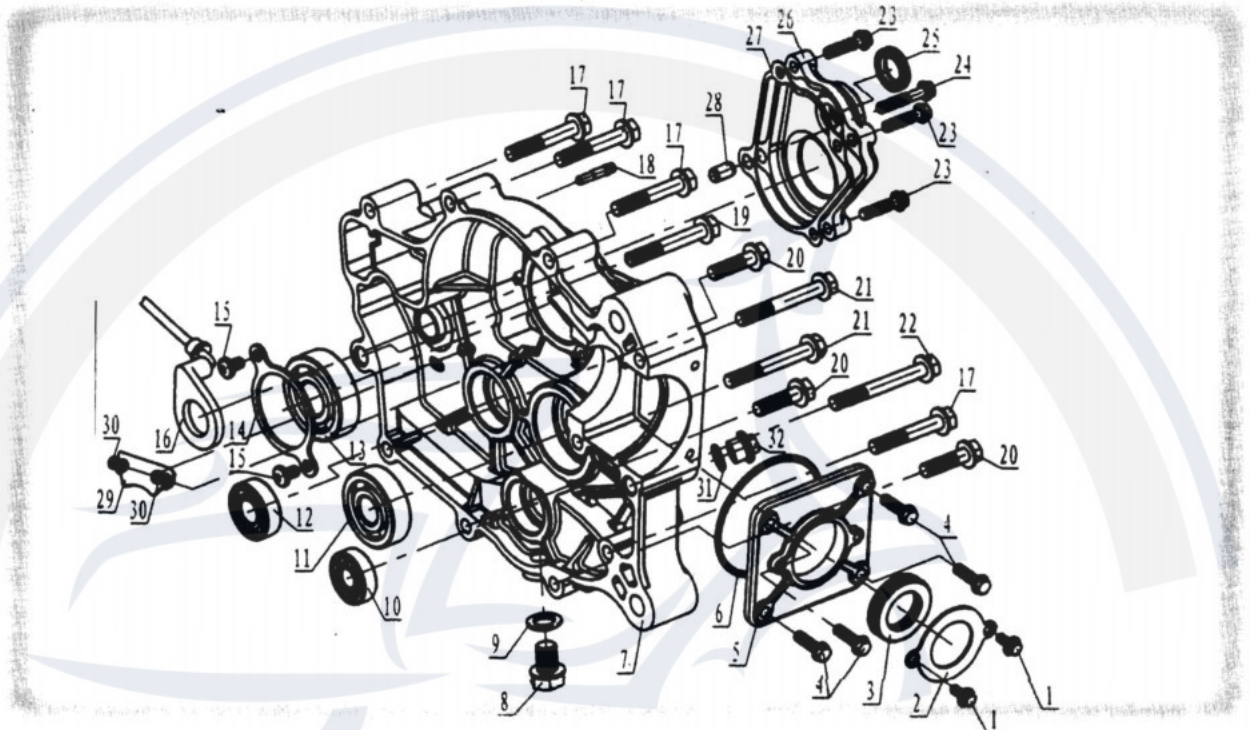
MAGNGEO COMP.,



MAGNGEO COMP.

REF NO.	PART NO.	DESCRIPTION	REGD NO.
1	172MM-094000	CLUTCH	1
2	172MM-033000	IGNITION COIL	1
3	172MM-013008	WIRE PLATE	1
4	172MM-031000	FLYWHEEL	1
5	172MM-032000	STATOR	1
6	GB/T70 1-2000	INNER HEX FLANGE BOLT M8x18	3
7	172MM-040001	NUT M16x1	1
8	172MM-040002	WASHER 16.3x30x2	1
9	152MI-030002	FLANGE BOLT M5x16	2
10	152MI-060012	FLANGE BOLT M6x30	3

GEAR BOX COVER ASSY(1 7 2MM - B)



GEAR BOX COVER ASS Y (1 7 2 MM - B)			
REF NO.	PART NO.	DESCRIPTION	REGD NO.
1	172MM-B-011112	BOLT M5X10	2
2	172MM-B-011110	PRESS PLATE,OIL SEAL	1
3	152MI-011001	OIL SEAL 27X42X7	1
4	152MI-023010	BOLT M6X20	4
5	172MM-B-011105	GEAR COVER	1
6	172MM-B-011106	O RING 73X2.65	1
7	172MM-B-011103	GEAR BOX COVER	1
8	172MM-013005	OIL DRAINING BOLTM12X1.5	1
9	152MI-021014	GASKET 12	1
10	GB/T 276-1994 6201	BOLT	1
11	GB/T 276-1994 6303	BEARING	1
12	GB/T 276-1994 6202-RS	BEARING	1
13	GB/T 276-1994 6304	BEARING	1
14	172MM-B-011104	PLATE BEARING	1
15	GB/T 818-2000 M6X10	SCREW	2
16	172MM-B-069000	GEARING INDICATOR	1
17	172MM-B-011107	BOLT M8X48	4
18	CF188-310028	CONN ECTOR, AIR HOSE	1
19	IP52MI-A-011007	BOLT M8X55	1
20	172MM-B-011111	BOLT M8X30	3
21	172MM-B-011109	BOLT M8X60	2
22	172MM-B-011108	BOLT M8X65	1
23	152MI-021017	BOLT M6x25	3
24	152MI-080012	BOLT M6x32	1
25	CF188-065002	OIL SEAL SD15X25X5	1
26	CF188-065001	COVER,FANGEAR	1
27	CF188-065003	GASKET,FAN GEAR BOXBOXCOVER	1
28	152MI-08008	DOWEL DIN (>8X14	1
29	172MM-B-011113	OIL SHIELDER	1
30	CB/T 819-2000	BOLT M4X 12	2
31	CF188-332004	O RING 19X2.5	1
32	CF188-332003	OIL FILLING BOLT M20X 1.5X12	1

- a. Warm up the engine(5~ 10min)
- b. Tighten the air screw gently.Backout 2-3/8 turns counter clockwise.
- c. Connect the tachometer,adjust the throttle to limit the idle speed.The standard value is 1400RPM.
- d. Turn the air screw counter clockwise slowly and observe the RPM of the engine,stop adjusting as the RPM reaches the top speed.
- e. Adjust the screw and adjust the idle speed to an ideal value.
- f. Recheck and readjust the idle speed if necessary.

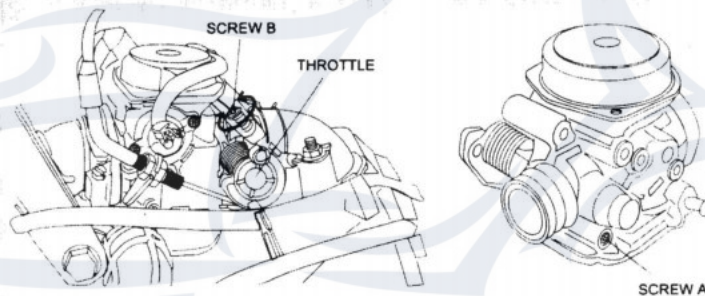


Figure 9

E.Cleaning Instructions

Keep your kart clean.With a clean rag,wipe off all dirt and oil from around the controls. Wipe off any spilled fuel and oil.Keep the engine clean of foreign objects,and be sure to check that the air intake fan is free of debris for proper cooling.

F.Kart Lubrication

Lubricate the vehicle every 90 days of use.Lubrication should be done more often,if the kart is used everyday.

G.Adjustment of Front And Rear Shock

There are five positions on each shock. The default position is in the middle set by the manufacturer(See Fig. 10)

Use a round nut wrench as you adjust the shock,the tension of shock spring will increase as you screw to the left,decrease as you screw to the right.Adjust according to the weight of the riders.

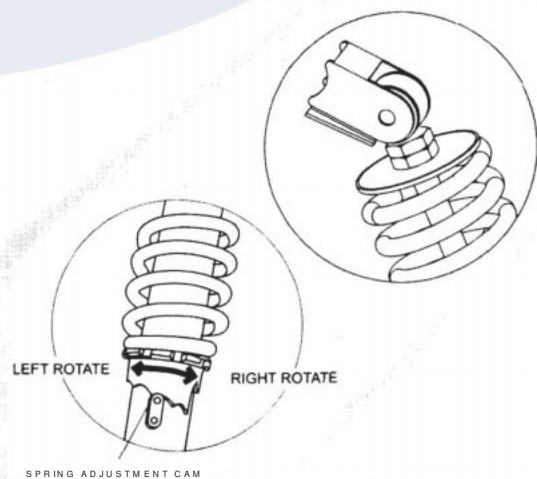


Figure 10

SERVICE INSTRUCTIONS

H.Storage Instruction

In the event your kart is not to be operated for a period in excess of 30 days or at the end of each driving season prepare for storage as follows:

- a. Drain the fuel tank and carburetor by allowing the engine to run out of fuel.
- b. Lubricate engine cylinder by removing the air spark plug and pouring a small amount of oil into the plug hole, then re-fit the plug.
- c. Do not save or store gasoline over winter. Using old gasoline, which has deteriorated from storage, will make the engine difficult to start and affect engine performance.

A WARNING]

1

Do not drain fuel while engine is hot. Be sure to move the kart outside before draining fuel.

REPAIR

A.Front Wheel Replacement

Do not disassemble the castle nuts when you replace the front wheels.

It is only necessary to remove the 4 lug nuts to remove the wheel. (See Fig. 11)
Tighten the nuts after replacing the wheels.

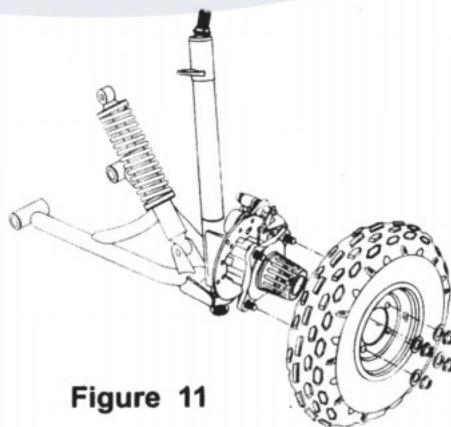
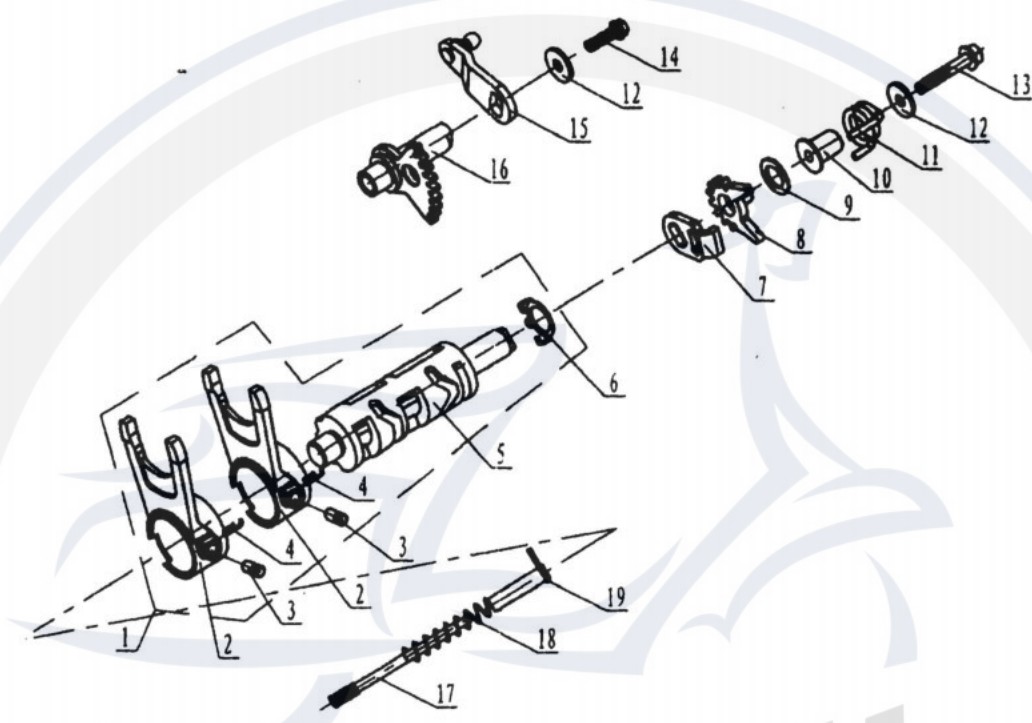


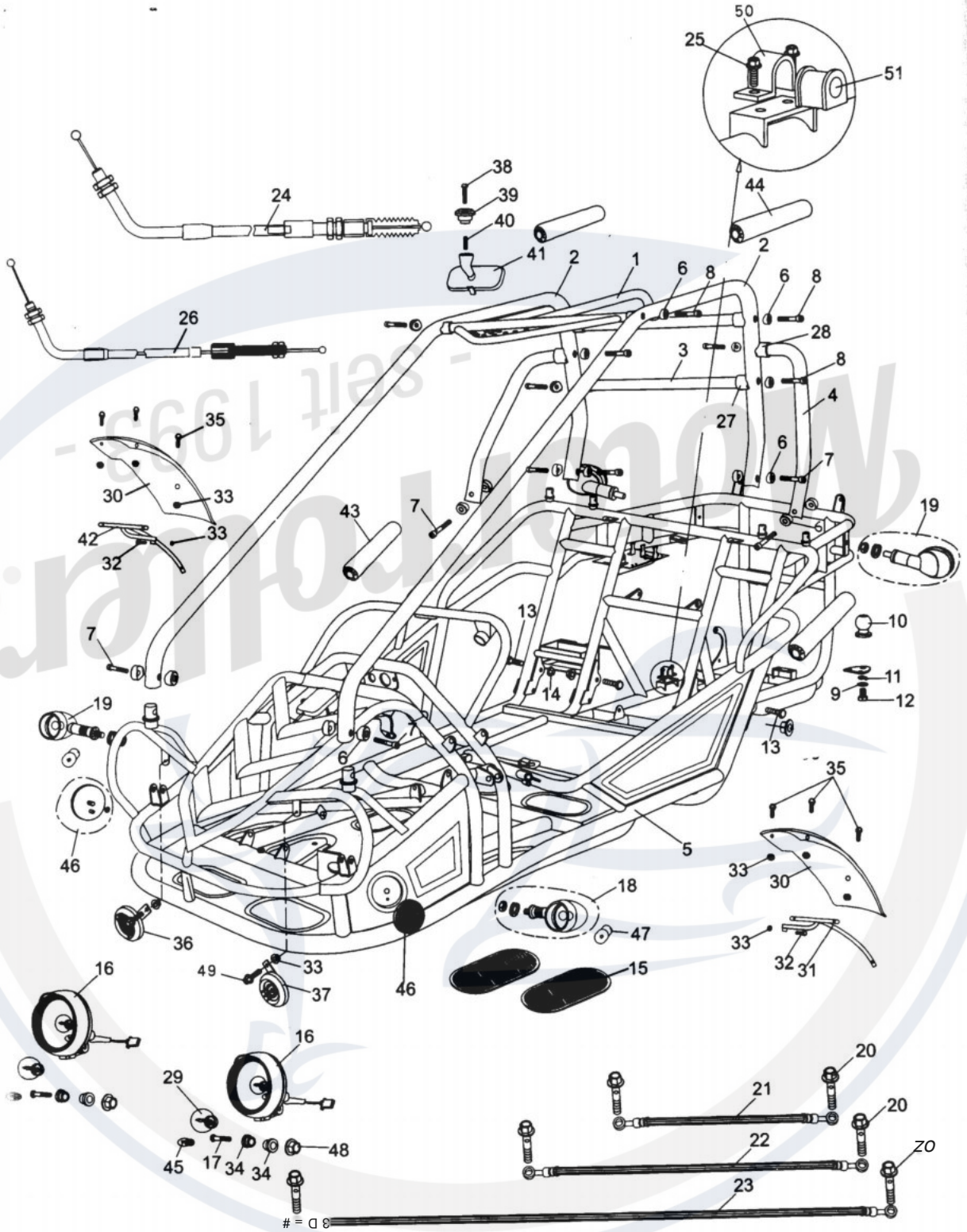
Figure 11

GEAR SHIEFTING SYS.



GEAR SHIEFTING SYS.

REF NO.	PART NO.	DESCRIPTION	REGD NO.
1	172MM-B-066000	GEAR SHIEFTING DRUM ASSY	1
2	172MM-B-066002	GEARSHIETING FORK	2
3	172MM-B-066003	PIN	2
4	172MM-B-066004	CIRCLIP	2
5	172MM-B-066001	GEAR SHIEFTING DRUM	1
6	172MM-B-066005	TOUCH PIECE,GEAR SHIEF	1
7	CF188-065201	GASKET	1
8	CF188-065203	DRIVENFANGEAR	1
9	CF188-065204	GASKET 13.5x22x1	1
10	CF188-065202	FANG EAR SHAFT	1
11	CF188-065204	SPRING	1
12	CF188-065206	GASKET 6.6x20x2	2
13	152MI-013008	BOLT M6X35	1
14	152MI-023010	BOLT M6X20	1
15	CF188-065300	ROCKER ASSY	1
16	172MM-B-065100	WELDING PART DRIVE FAN GEAR	1
	172MM-C-065100	WELDING PART DRIVE FAN GEAR	1
17	172MM-B-066007	GEARSHIETING SHAFT	1
18	172MM-B-066009	SPRING	1
19	172MM-B-066008	PRESS PLATT BUSH	1



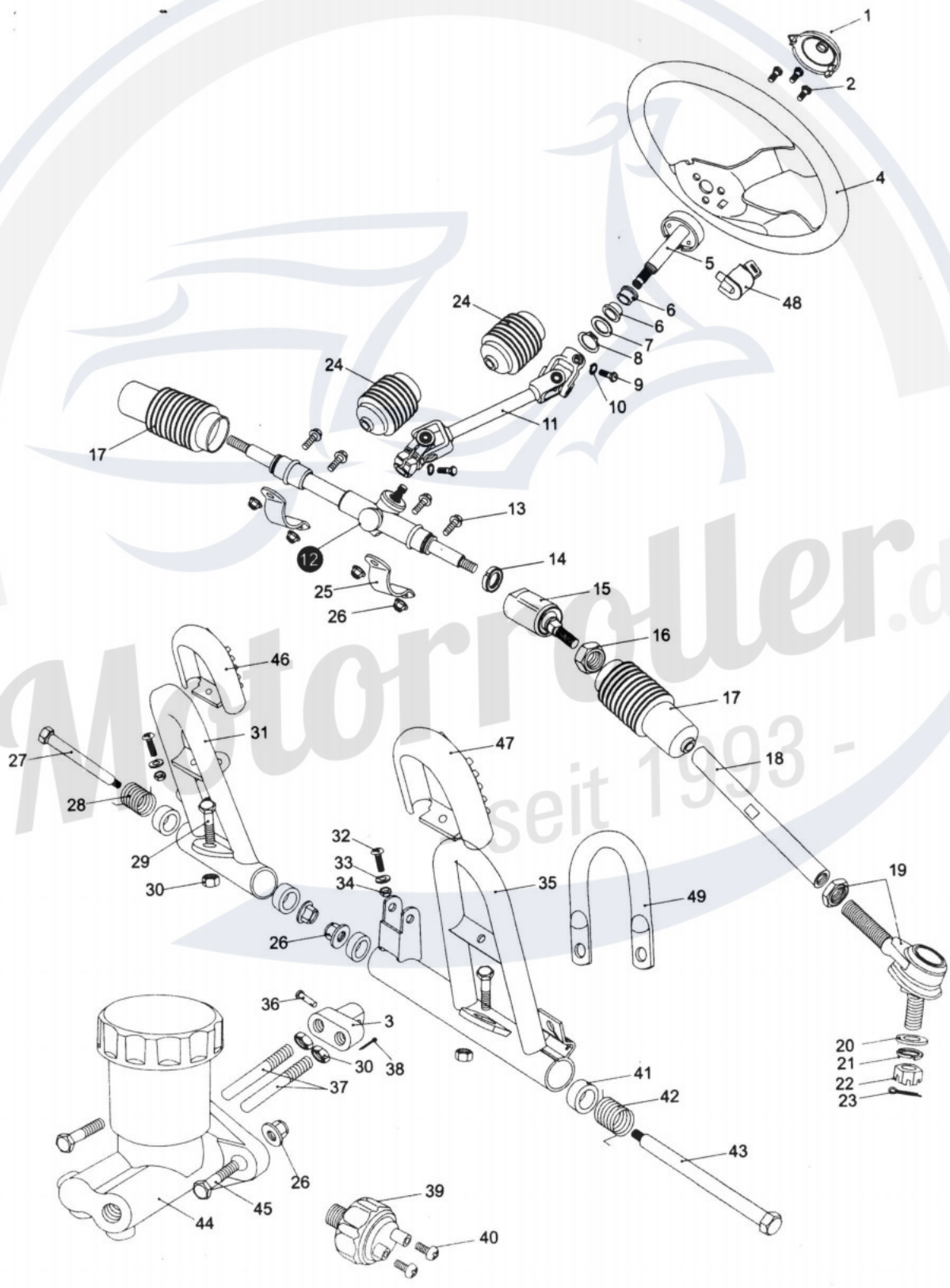
FRAME GROUP

REF NO.	PART NO.	DESCRIPTION	REGD NO.
1	- 6.000.061	C.B.C.CROSS BAR,FR(B.R.S.)	1
2	8.070.034	C.B.C.BAR CAGE(B.R.S.)	2
3	8.080.033	C.B.C.CROSS BAR,RR(B.R.S.)	1
4	8.070.035	C.B.C. BAR, L./R.SIDE(B.R.S.)	2
5	2.000.045	FRAME COMP.(B.R.S.)	1
6	8.010.047	R-WASHER	18
7	9.908.050N	SOCKET BOLT M8x1.25x50	6
8	9.908.055N	SOCKET BOLT M8x1.25x55	10
9	9.300.016	WASHER 4)16	1
10	2.200.001	TOW BALL	1
11	9.400.016	LOCK WASHER *16	1
12	9.101.625	BOLT M16x25	1
13	9.112.025	BOLT-WASHER M12x1.25x60	4
14	9.220.012	LOCKING FLANGE NUTM12x1.25	4
15	7.020.012	RUBER FOOT PLATE	2
16	6.000.104	HEADLIGHT UNIT	2
17	9.108.050	BOLT-WASHER M8x1.25x50	2
18	6.000.155	WINKER LIGHT ASSY.L.FR./R.RR.	2
19	6.000.156	WINKER LIGHT ASSY.R.FR./L.RR.	2
20	9.700.004	BANJO BOLT M10x24	6
21	6.000.089	BRAKE HOSE ASSY.L. 34"	1
22	6.000.090	BRAKE HOSE ASSY.R.43"	1
23	6.000.230	BRAKE HOSE ASSY.RR. 80"	1
24	6.000.232	THROTTLE CABLE COMP.	1
25	9.106.012	BOLT M6x12	6
26	6.000.231	PARKING BRAKE CABLE COMP.	1
27	7.010.017	TUBE SEAT * 25	6
28	7.010.016	TUBE SEAT * 32	2
29	9.090.003	HEADLIGHT BULB 35W /35W / 12V	2
30	7.010.034	FENDER.FR.	2
31	6.000.067	FRONT FENDER BRACKET*.	1
32	9.100.640	BOLT M6x40	2
33	9.210.008	LOCKING FLANGE NUT M6	10
34	7.020.049	HEADLIGHT RUBBER MOUNT	4
35	9.106.014	BOLT-WASHER M6x14	6
36	6.000.135	HORN.H.	1
37	6.000.136	HORN,L.	1
38	9.100.525	BOLT M5x25	1
39	8.010.086	REAT MIRROR MOUNT	1
40	8.040.005	REAR VIEW MIRROR SPRING	1
41	6.000.084	REAR MIRROR ASSY.	1
42	6.000.102	FRONT FENDER BRACKET,R.	1
43	6.000.083	FOAM PADDING-1	2
44	6.000.116	FOAM PADDING-2	2
45	9.000.004	POSITION LIGHT BULB 3W 12V	2
46	H 6.000.114	FRONT REFLECTOR	2
47	9.090.006	WINKER BULB 10W 12V	4
48	9.220.008	LOCKING FLANGE NUT M8	2
49	9.106.012	BOLT M6x12	2
50	2.100.002	SWAY BAR BRACE	3
51	2.100.001	SWAY BAR BRACE BUSHING	3

m

FIG.23

STEERING SHAFT ASSY.



Aktuelle Preise erfahren sie auf www.motorroller.de

STEERING SHAFT ASSY.

REF NO.	PART NO.	DESCRIPTION	REGD NO.
1	7.010.041	STEERING BOLT COVER	1
2	9.100.612	BOLT STRAP M6x12	3
3	8.030.024	SPINDLE BRACKET	1
4	7.020.038	STEERING WHEEL	1
5	6.000.122	STEERING SHAFT	1
6	7.010.026	STEERING SHAFT BUSH	2
7	9.700.020	SPECIAL WASHER *20	1
8	9.700.120	CIRCLIP *20	1
9	9.100.825	BOLT M8x25	2
10	9.400.008	LOCK WASHER *8	2
11	6.000.093	STEERING KNUCKLE	1
12	84.000.014	STEERING GEAR	1
13	9.108.025	BOLT-WASHER M8x1.25x25	4
14	9.900.016	ROUND NUT M 16x1.5	2
15	4.000.008	STEERING BALL JOINT	2
16	9.200.010	NUTM10	2
17	7.020.002	BALL JOINT DUST COVER	2
18	8.010.157	TIE ROD	2
19	6.000.062	ROD END	2
20	9.300.010	FLAT WASHER *10	2
21	9.400.010	LOCKWASHER *10	2
22	9.800.010	CASTLE NUT M10	2
23	9.500.215	COTTER PIN *2x15	2
24	7.020.066	STEERING KNUCKLE DUST COVER	2
25	8.020.014	STEERING GEAR BRACKET	2
26	9.220.008	LOCKING FLANGE NUT M8	8
27	9.708.145	THROTTLE PEDAL BOLT M8x1.25x145	1
28	8.040.001	THROTTLE PEDAL RETURN SPRING,L.	1
29	9.108.040	BOLT-WASHER M8x1.25x40	2
30	9.200.008	NUTM8	2
31	4.000.016	THROTTLE PEDAL COMP.	1
32	9.600.515	PAN SCREW M5x15	2
33	9.300.005	FLAT WASHER 4)6	2
34	9.210.005	NYLON LOCK NUT M5	2
35	84.000.015	BRAKE PEDAL COMP.	1
36	9.700.624	PIN 4)6x24	1
37	8.010.081	SPINDLE PIN	2
38	9.500.212	COTTERPIN T ⁹ x12	1
39	6.000.063	BRAKE LAMP SWITCH ASSY.	1
40	9.600.306	PAN SCREW M3x6	2
41	7.010.004	PEDAL BUSH	4
42	8.040.007	BRAKE PEDAL RETURN SPRING,R.	1
43	9.708.222	BRAKE PEDAL BOLT M8x1.25x222	1
44	6.000.076	MASTER CYLINDER	1
45	9.108.035	BOLT-WASHER M8x1.25x35	2
46	7.020.036	THROTTLE PEDAL PAD	1
47	7.020.037	BRAKE PEDAL PAD	1
48	6.000.134	STEERING WHEEL LOCK	1
49	8.070.044	MASTER CYLINDER BRACKET	1

FRONT SUSPENSION ARM ASSY .



FIG.25

FULL SHIFTING ASSY.

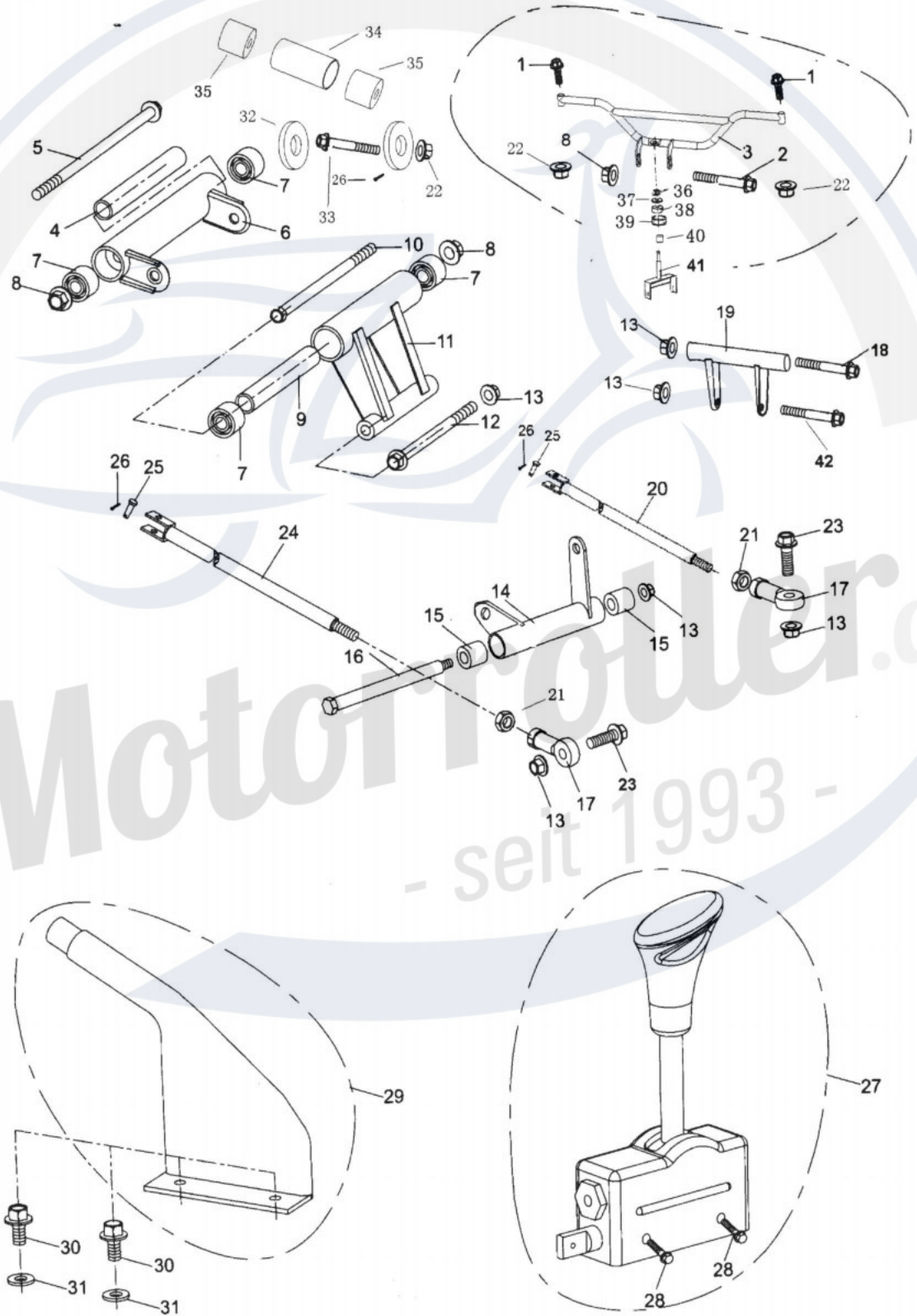


FIG.26

REAR CARGO RACK / SEAT / BELT

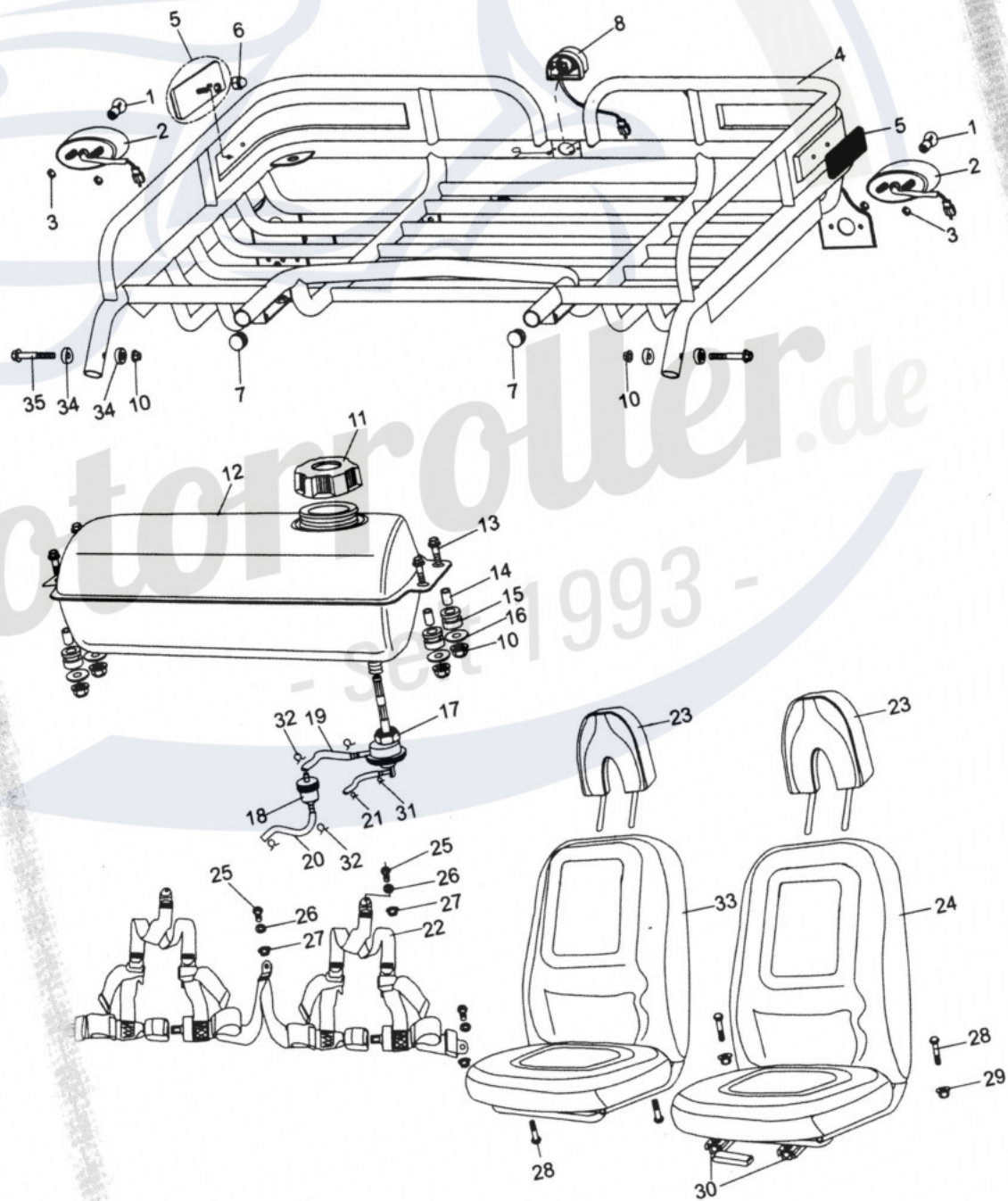
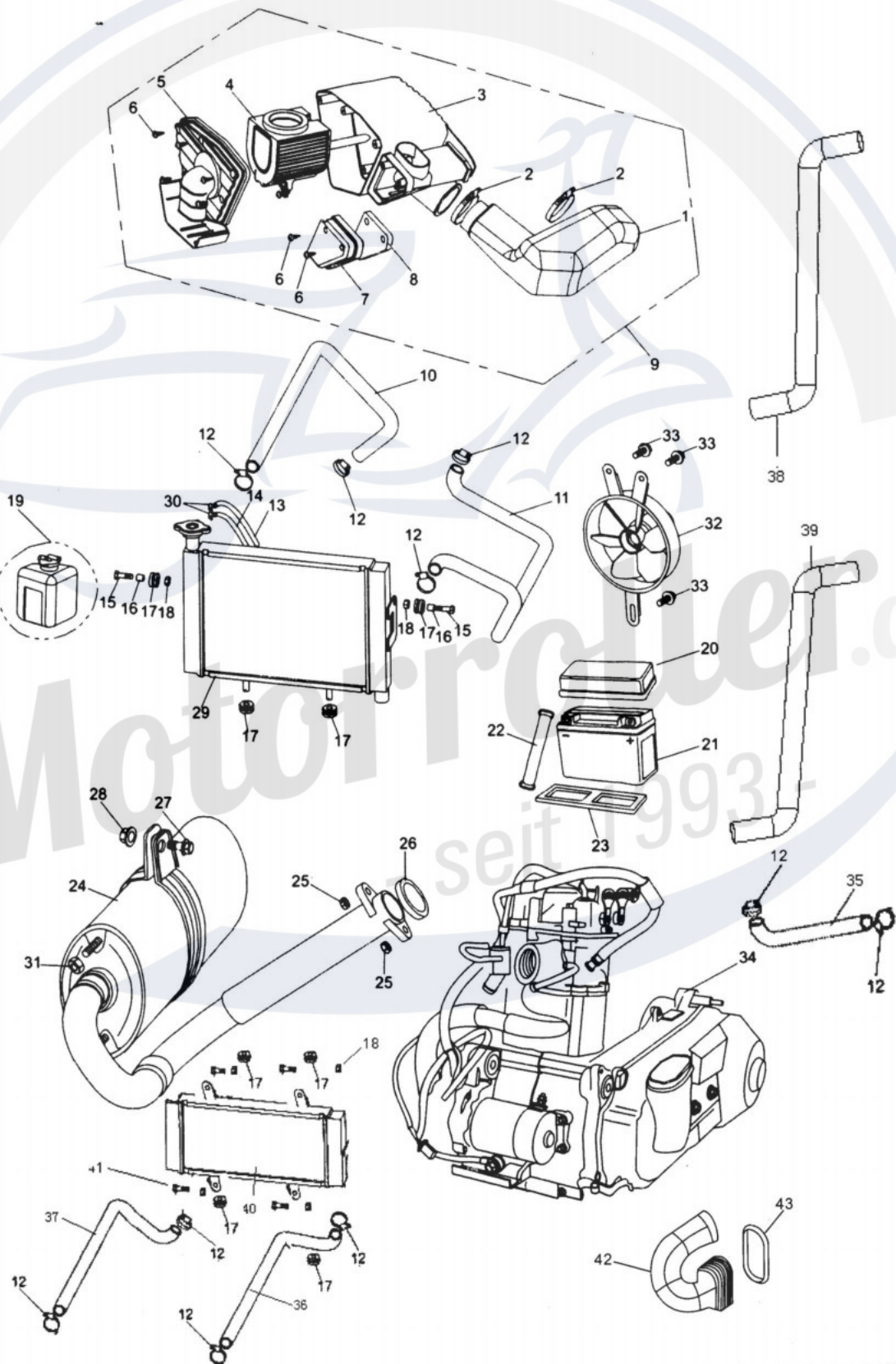
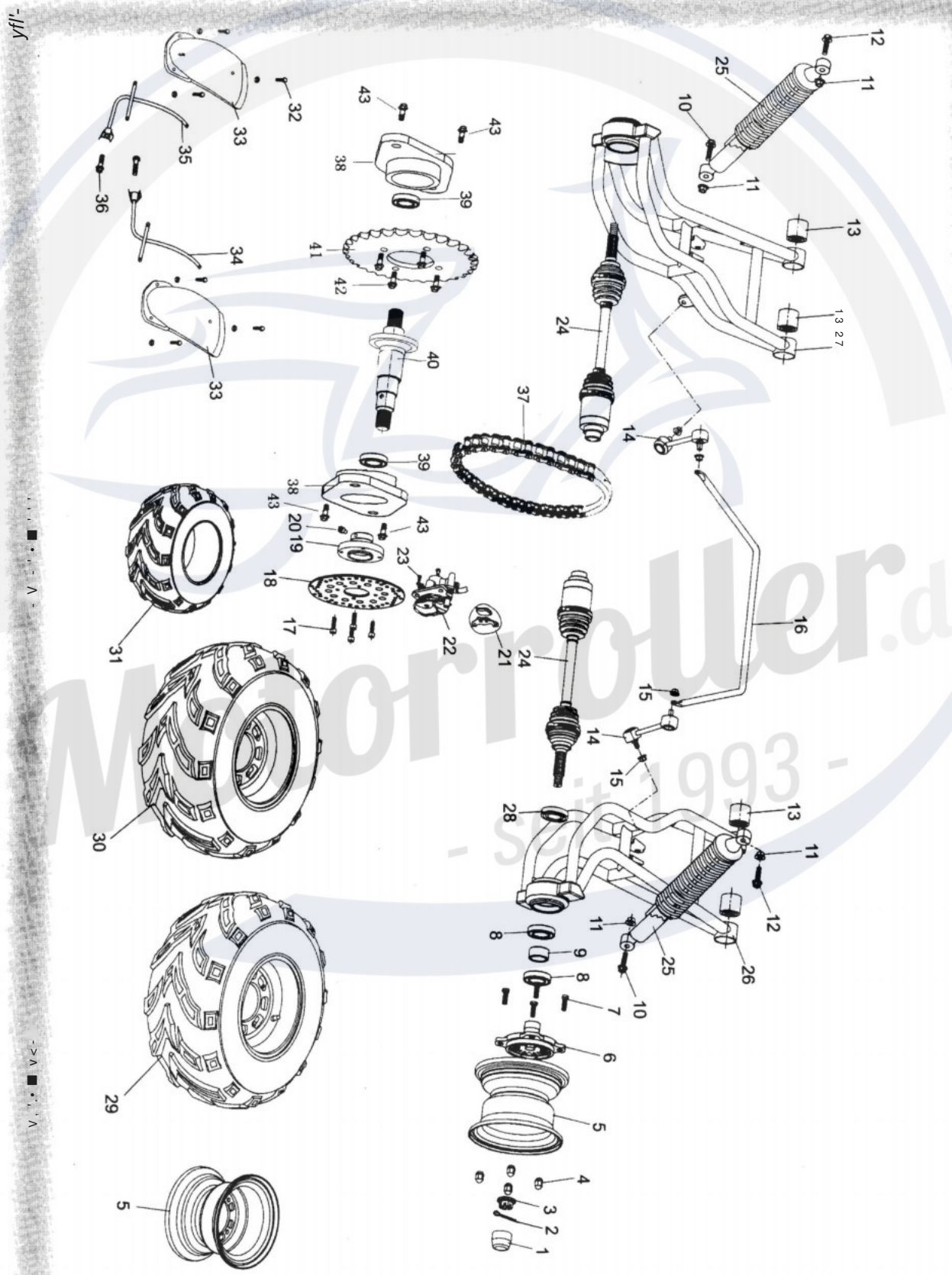


FIG.27

AIR CLEANER/RADIATOR/BATTERY /MUFFLER ASSY.



REAR SUSPENSION ASSY .



Motorroller.de
Since 1993

FIG.29

WIRE HARNESS/ELECTRICAL

