
Ersatzteilbuch Eppella Straßenbuggy 150 I (Stahlfelge)

Motorroller.de
- seit 1993 -

Friedrich Epple GmbH
Im Erlengrund 1
64678 Lindenfels, OT Eulsbach
Tel.: 06255 300 30
E-Mail: info@motorroller.de
Web: www.motorroller.de

Aktuelle Preise erfahren sie auf www.motorroller.de

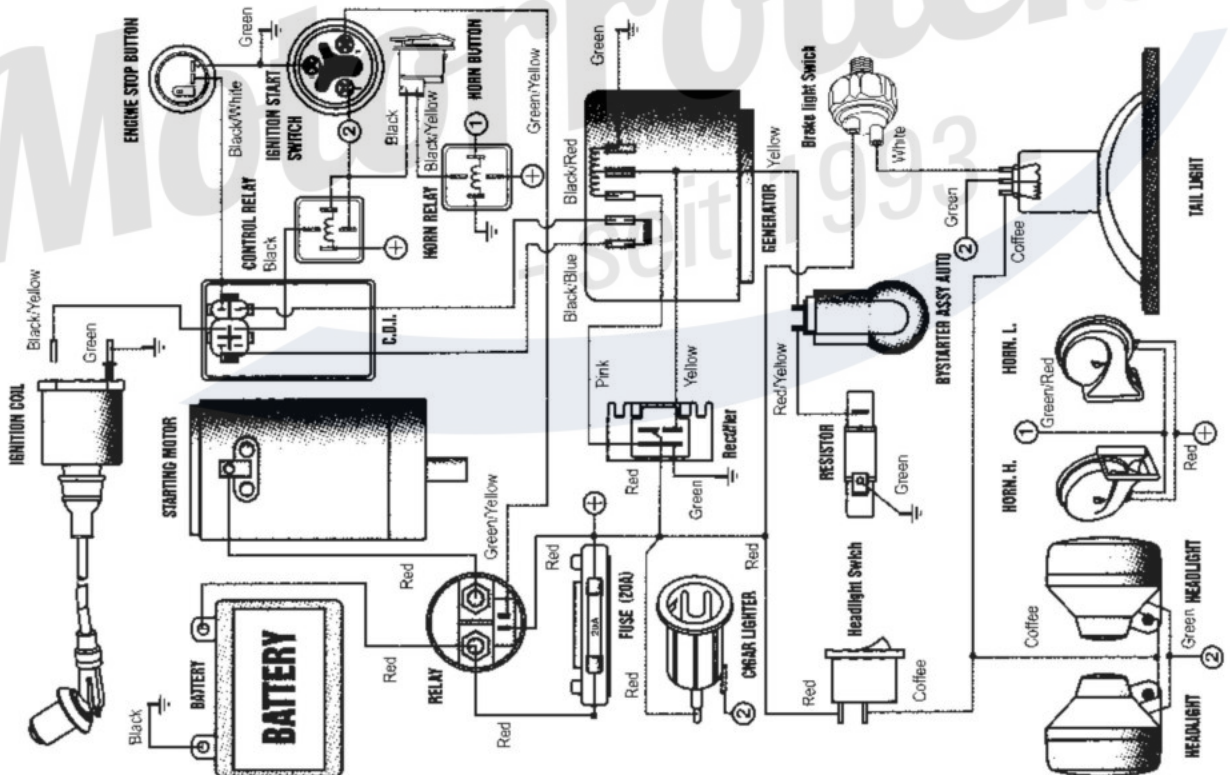
PERIODICAL CHECK AND SERVICES

The maintenance intervals in the following table are based upon average driving conditions. Driving in unusually dusty areas, require more frequent servicing.

items	Time of service	Initial service (first week)	Monthly	Quarterly	Yearly
Tire pressure/wear					
Brake performance					
Tightness of screws					
Air cleaner					R
Carburetor					C
Spark plug				C, A	
Drive chain			c, l, L	A	
Brake oil					
Replace gearbox oil				R	
Chassis			C, l	L	
Fuel switch/fuel tank					C
Battery					
Valve clearance of engine				A	

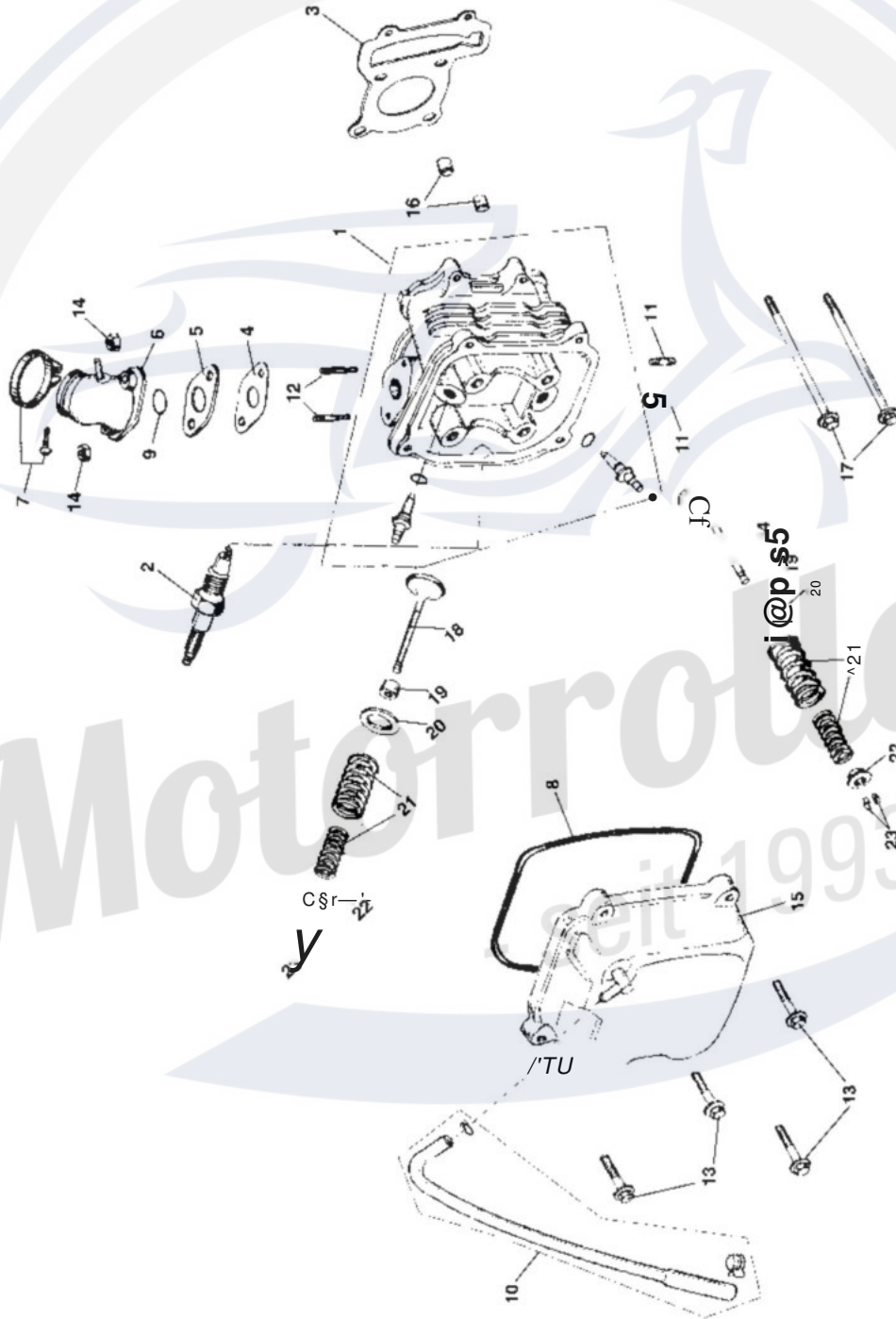
A: adjust C: clean I: inspect, clean or replace if necessary. L: lubricate R: replace

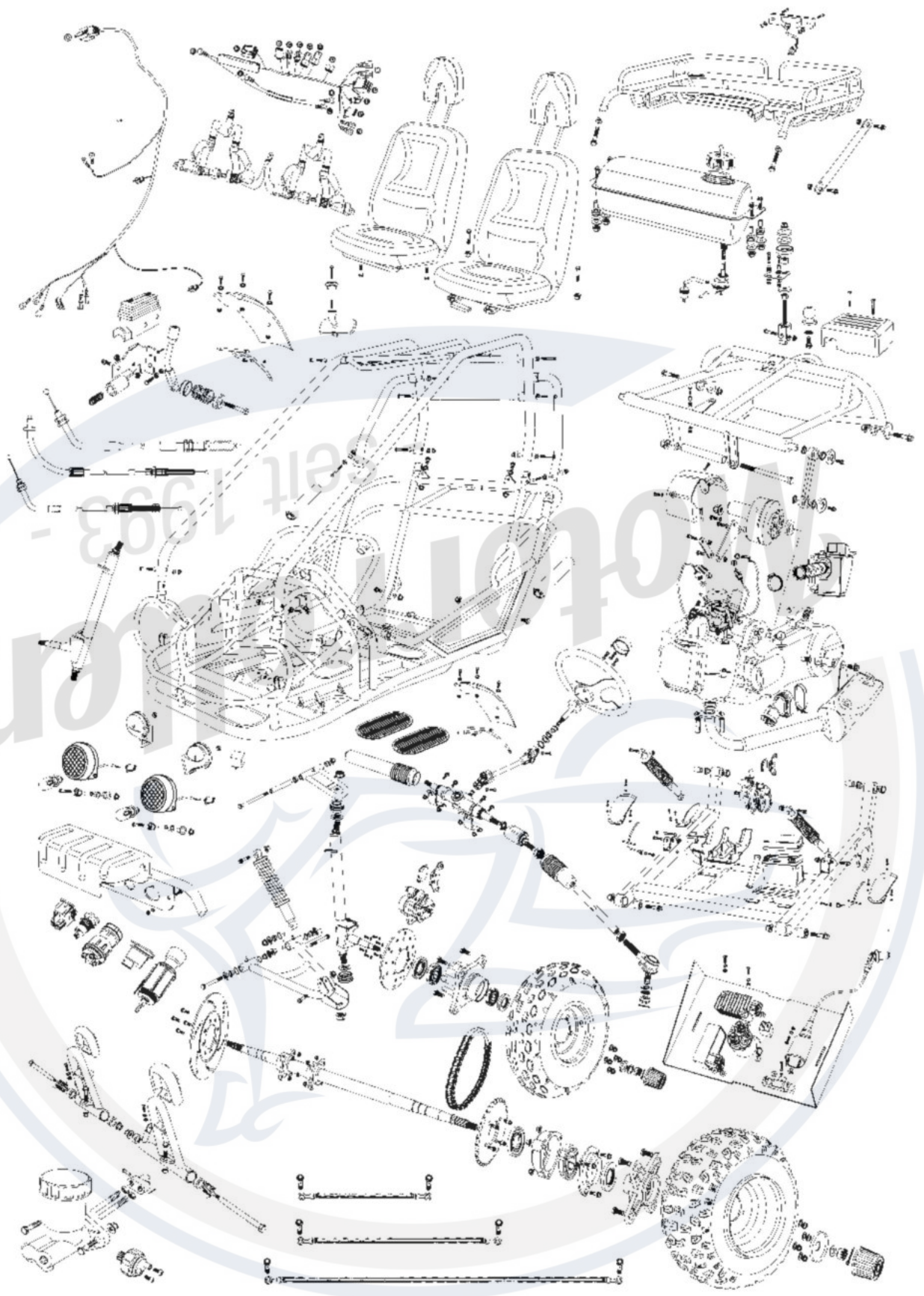
WIRING DIAGRAM



..... FIG.1

CYLINDER HEAD ASSY.

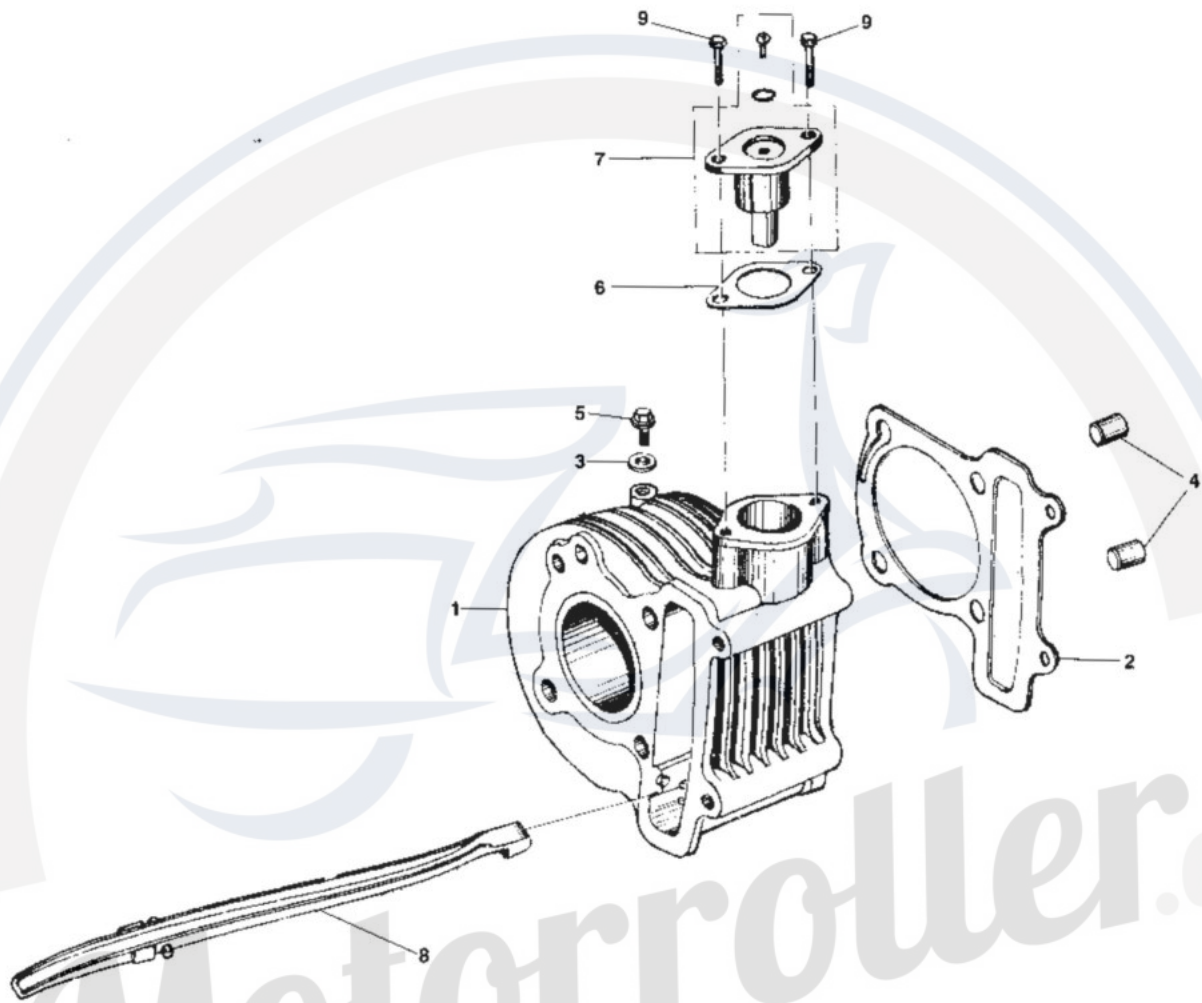




CYLINDER HEAD ASSY.

REF NO.	PART NO.	DESCRIPTION	REGD NO.
1	M150-100-1320	HEAD CYLINDER SUBASSY	1
2	98056-57713-00	PLUG SPARK(C7HSA NGK)	1
3	M150-1001010	GASKET CYLINDER HEAD	1
4	<u>M150-1001004</u>	GASKET CARBURETOR INSULATOR	1
	M150-1001005	INSULATOR CARBURETOR	1
	M150-1001210	PIPE COMP. IN	1
	M150-1001220	BAND INSULATOR	1
	M150-1QQ1103	<u>GASKET HEAD COVER</u>	1
	<u>M15Q-1001201</u>	O-RING27X2_	1
	<u>M150-1001001</u>	TUBE BREATHER	1
11	M150-1001011	BOLT STUD M6X18	2
1	M150-1001006	BOLT STUD M6X50	2
1	<u>M150-B-1003075</u>	<u>BOLT FLANGE M6X25</u>	4
1	<u>95500-06001-KAS</u>	NUT FLANGE M6-ZN. D	2
1	M150-1001100	COVER COMP. CYLINDER HEAD	1
100	M150-1001007	PIN DOWEL 10X16	300
1	M150-1003007	BOLT FLANGE M6X100, CYLINDERHEAD	
1	<u>M150-1001301</u>	VALVE JN	1
1	M150-1001310	SEAL VALVE STEM	GM CM CM CM
20	M150-1001302	SEAT VALVE SPRING OUTER	
21	M150-1001303	SPRING VALVE OUTER, INNER	
22	M150-1001305	RETAINER VALVE SPRING	
23	M150-1001306	COTTER VALVE	4
24	M150-1001307	VALVE, EX	1

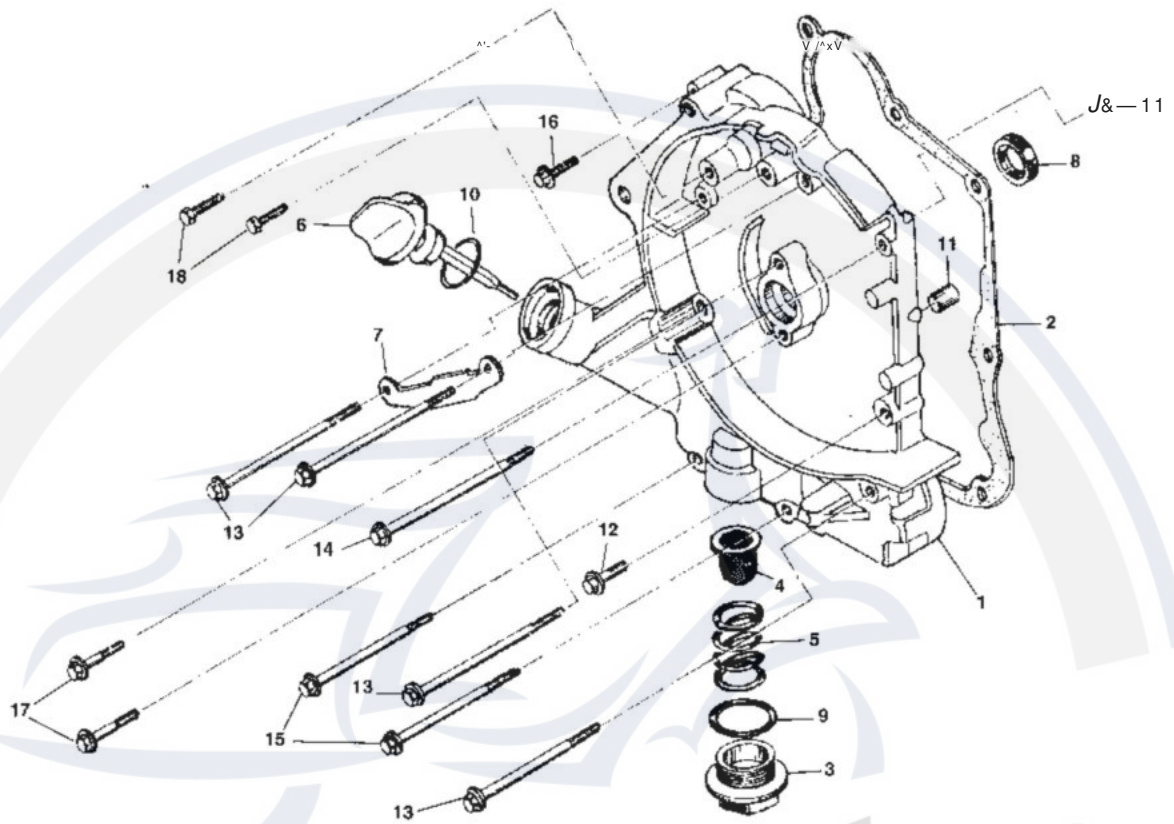
CYLINDER ASSY.



CYLINDER ASSY.

REF NO.	PART NO.	DESCRIPTION	REGD NO.
1	M150-1002200^	CYLINDER COMP.	1
	M150-1002001	GASKET CYUNDER	1
	90442-06000-KAT	WASHER SEALING 6	1
4	M150-1001007	PIN_DOWEL WX16	2
	96001-06012-KAT	BOLT FLANGE M6X12-ZNJ3	1
	M150-1002002	GASKET TENSIONERLIFTER	1
7	M150-1002100	LIFTER ASSY TENSIONER	1
	M150-1002300	GUIDE COMP. CAM CHAIN	1
	96001-06020-KAT	BOLT FLANGE, 6X20	2

CRANKCASE ASSY. (1)

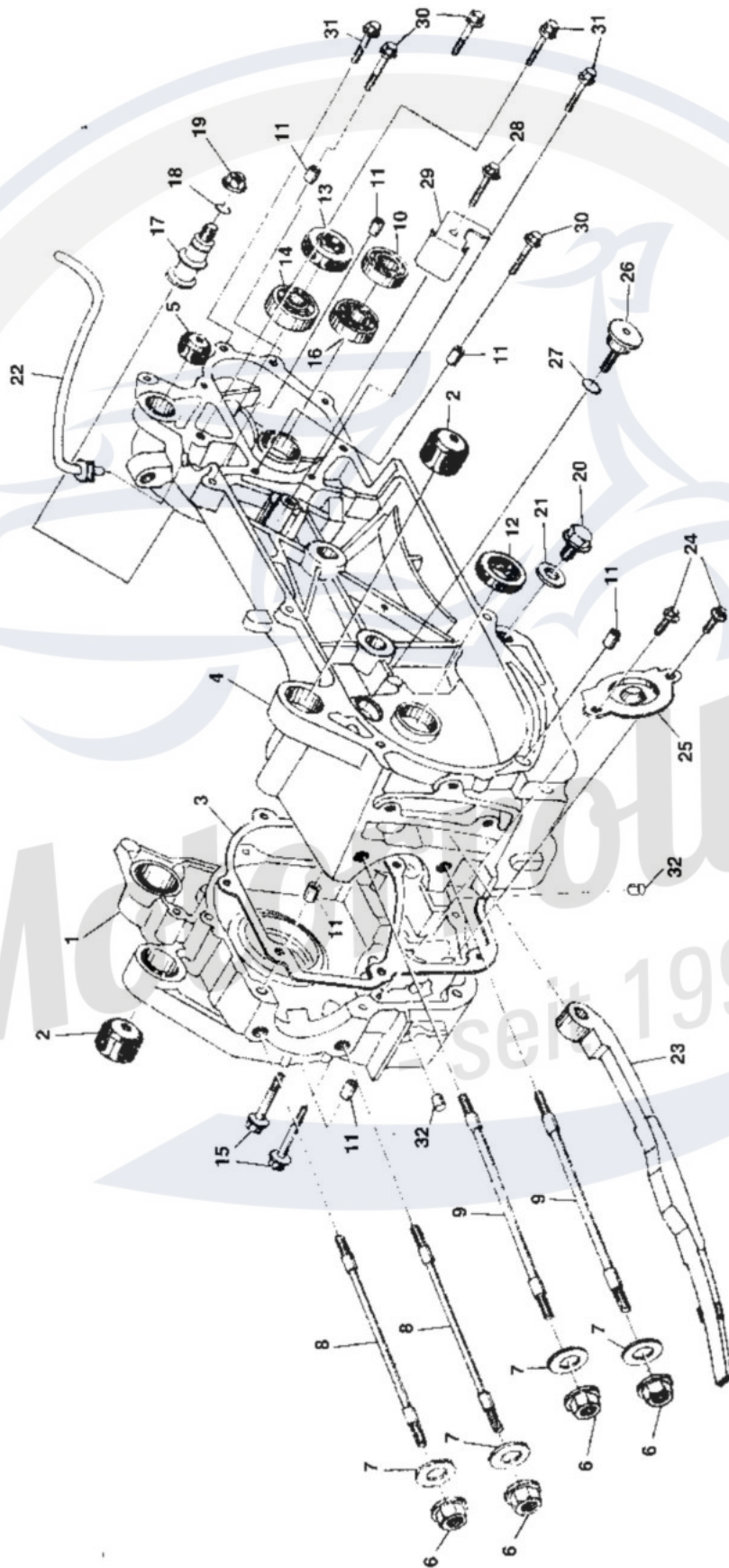


CRANKCASE ASSY.(1)

REF NO.	PART NO.	DESCRIPTION	REGD NO.
1	M150-1003101	COVER R CRANKCASE COMP.	1
2	M150-1003013	CRANKCASE COVER,GASKET	1
3	M150-1003104	CAP TAPPET ADJUSTING HOLE	1
4	M150-1003120	SCREEN OIL FILTERING	1
5	M150-1003102	SRING OIL FILTERING SCREEN	1
6	M150-1003105	GAUGE OIL LEVEL	1
7	M150-1003006	CLAMPER AC GENERATOR CORD	1
8	M150-1003110	OIL SEAL 19.8X30X5	1
9	M150-1003103	O-RING 30.8X3	1
10	M150-1003307	O-RING 18X3	1
11	M150-1003005	PIN DOWEL 8X14	2
12	96001-06032-KAT	BOLT FLANGE M6X32	1
13	M150-1003012	BOLT FLANGE M6X95	4
14	M150-1003007	BOLT FLANGE M6X100	1
15	M150-1003008	BOLT FLANGE M6X110	2
16	M150-1003034	BOLT FLANGE M6X40	1
17	M150-1003106	BOLT FLANGE M6X20	2
18	92101-05012-OH	BOLT HEX M5X12-ZN.D	2

FIG.4

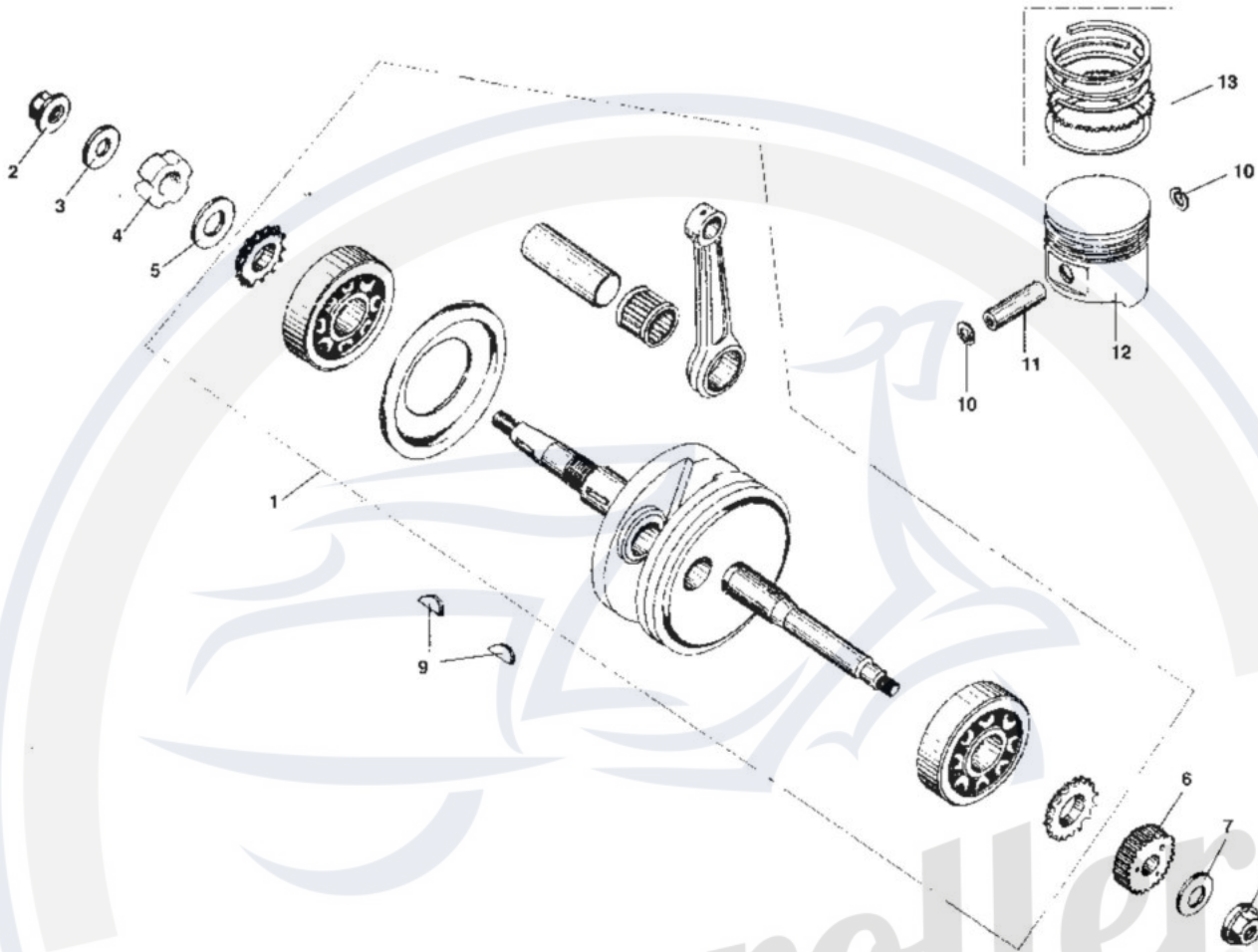
CRANKCASE ASSY. (2)



CRANKCASE ASSY. (2)

REF NO.	PART NO.	DESCRIPTION	REGD NO.
1	M150-1003210	CRANKCASE ASSY. R	1
2	M.150-1003320	BUSH ENGINE HANGER RUBBER	2
3	M150-1003014	GASKET CRANKCASE	1
4	M150-1003310	CANKCASE ASSY L	1
5	M150-1003330	BUSH RR CUSHION UNDER RUBBER	1
6	M150-1003003	NUT FLANGE M8	4
7	M150-1003004	WASHER 08	4
8	M150-1003001	BOLT STUD M8X187.5	2
9	M150-1003002	BOLT STUD M8X195.5	2
10	91004-E6Q02-KAT	BEARING RADIAL BALL E6002	1
11	M150-1003005	PIN DOWEL 8X14	6
12	M150-1003110	OIL SEAL 19.8X30X5	1
13	M150-1003340	OIL SEAL 27X42X7	1
14	91004-E6004-2RS	BEARING RADIAL BALL E6004-2RS	1
15	M150-1003032	BOLT FLANGE M6X50	2
16	91004-E6301-KAT	BEARING RADIAL BALL E6310	1
17	M150-1003015	PIN BRAKE SHOE ANCHOR	1
18	M150-1003016	OIL SEAL 7,5X15	1
19	M150-1003600	NUT FLANGE M8	1
20	M150-1003018	BOLT DRAIN PLUG M12	1
21	M150-1003019	WASHER DRAIN PLUG 012	1
22	M150-1003400	TUBE BREATHER	1
23	M150-1003500	TENSIONER CAM CHAIN	1
24	M150-1003203	BOLT FLANGE M6X12	2
25	M150-1003202	SEPARATOR OIL	1
26	M150-1003022	PIVOT CAM CHAIN TENSIONER	1
27	M150-1003023	OIL SEAL 15.2X12	1
28	96001-06014-KAT	BOLT FLANGE M6X14	1
29	M150-1003021	PLATE KICK RETURN STOPPER	1
30	M150-1003009	BOLT FLANGE M6X35	3
31	M150-1003011	BOLT FLANGE M6X25	3
32	M150-1003201	PLUG OIL 6.5X5	2

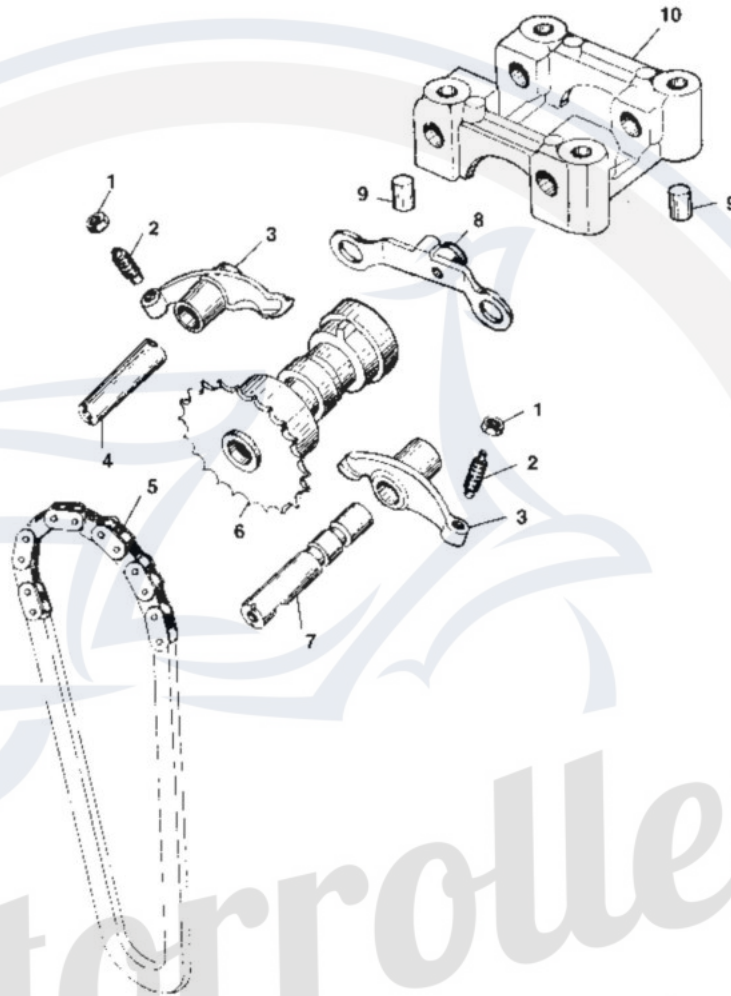
CRANKSHAFT CONROD & PISTON ASSY.



CRANKSHAFT CONROD & PISTON ASSY.

REF NO.	PART NO.	DESCRIPTION	REGD NO.
1	M15CM 004100	CRANKSHAFT & CONROD ASSY.	1
2	M150-1004007	NUT M12X1.25	1
3	M150-1004011	WASHER 12-149HV 12-140HV	1
4	M150-1004009	NUT LOCK	1
5	M150-1004013	WASHER	1
6	M150-1004012	GEAR KICK DRIVE	1
7	M150-1040005	WASHER 012	1
8	M150-1004008	NUTM12	1
9	M150-1004002	KEY WOODRUFF	2
10	M150-1004003	CLIP PISTON PIN	2
11	M150-1004006	PIN PISTON	1
12	M150-1004001	PISTON	1
13	M150-1004200	PISTON RING SET	1

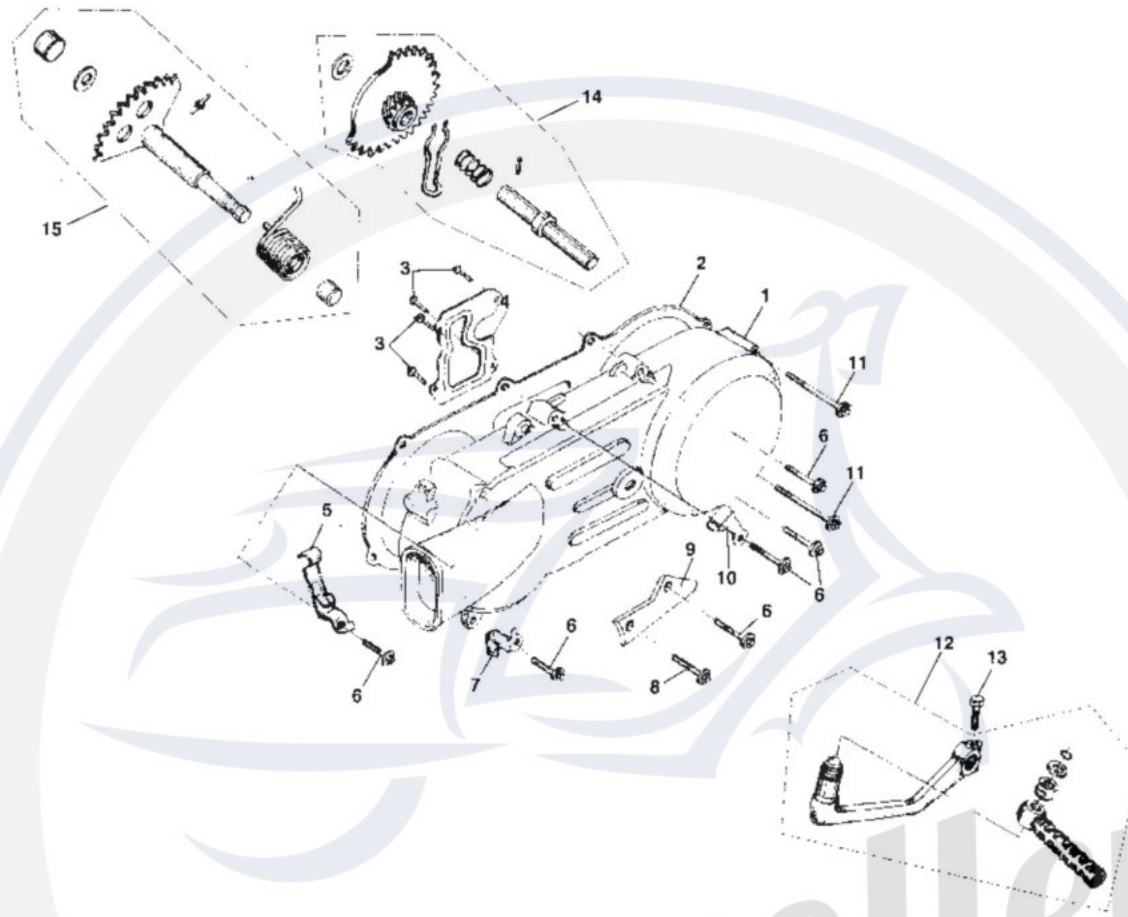
CAMSHAFT ASSY.



CAMSHAFT ASSY.

REF NO.	PART NO.	DESCRIPTION	REGD NO.
1	M150-1005004	NUT TAPPET ADJUSTING	2
2	M150-1005003	SCREW TAPPET ADJUSTING	2
3	M150-1005002	ARM VALVE ROCKER	2
4	M150-1005005	SHAFT EX ROCKER ARM	1
5	M150-1005400	CHAIN CAMSHAFT,	1
6	M150-1005300	CAMSHAFT COMP. 16T	1
7	M150-1005200	SHAFT COMP. IN ROCK ARM	1
8	M150-1005100	PLATE COMP. STOPPER	1
9	M150-1001007	PIN DOWEL 10X16	2
10	M150-1005001	HOLDER CAMSHAFT	1

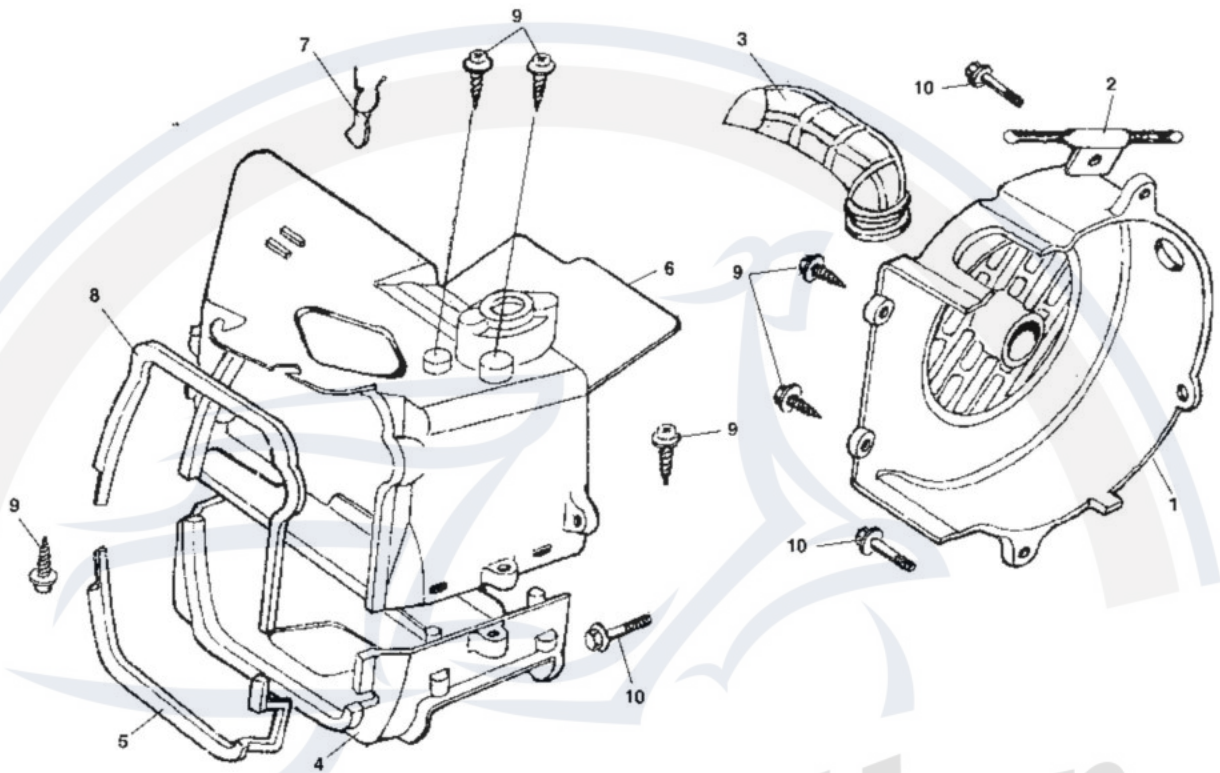
LEFT COVER ASSY.



LEFT COVER ASSY.

REF NO.	PART NO.	DESCRIPTION	REGD NO.
1	M150-1Q08101	COVER L	1
2	M150-1008005	GASKET L COVER	1
3	93903-00428-KAT	SCREW TAPPING ST4.2X8-F-H	4
4	M150-10081Q2	PLATE L COVER	1
5	M150-1008500	CLAMPER THROTTLE CABLE	1
6	M150-1003034	BOLT FLANGE M6X40	6
7	M150-1008007	CLAMPER BREATHER DRAIN TUBE	1
8	M150-1003203	BOLT FLANGE M6X12	1
9	M150-1008009	STOP PLATE	1
10	M150-1008008	CLAMPER BRAKE CABLE	1
11	M150-1008006	BOLT FLANGE M6X65	2
12	M150-1008400	PEDAL KICK STARTER ASSY.	1
13	96001-06022-08	BOLT FLANGE M6X22-ZN. D	1
14	M150-1008310	GEAR COMP. STARTER IDLE	1
15	M150-1008200	SPINDLE COMP. KICK STARTER ASSY.	1

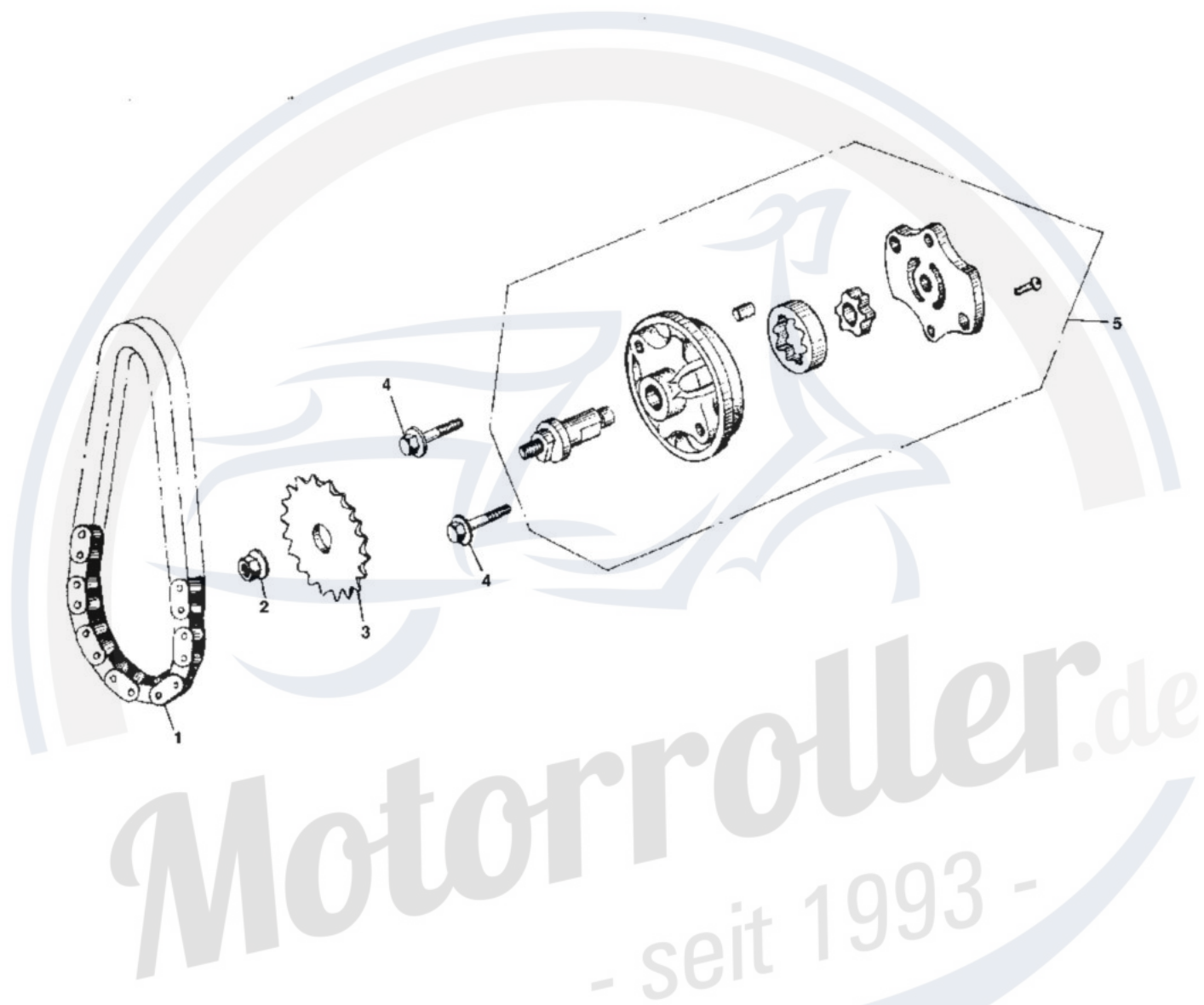
FAN COVER AND SHROUD ASSY.



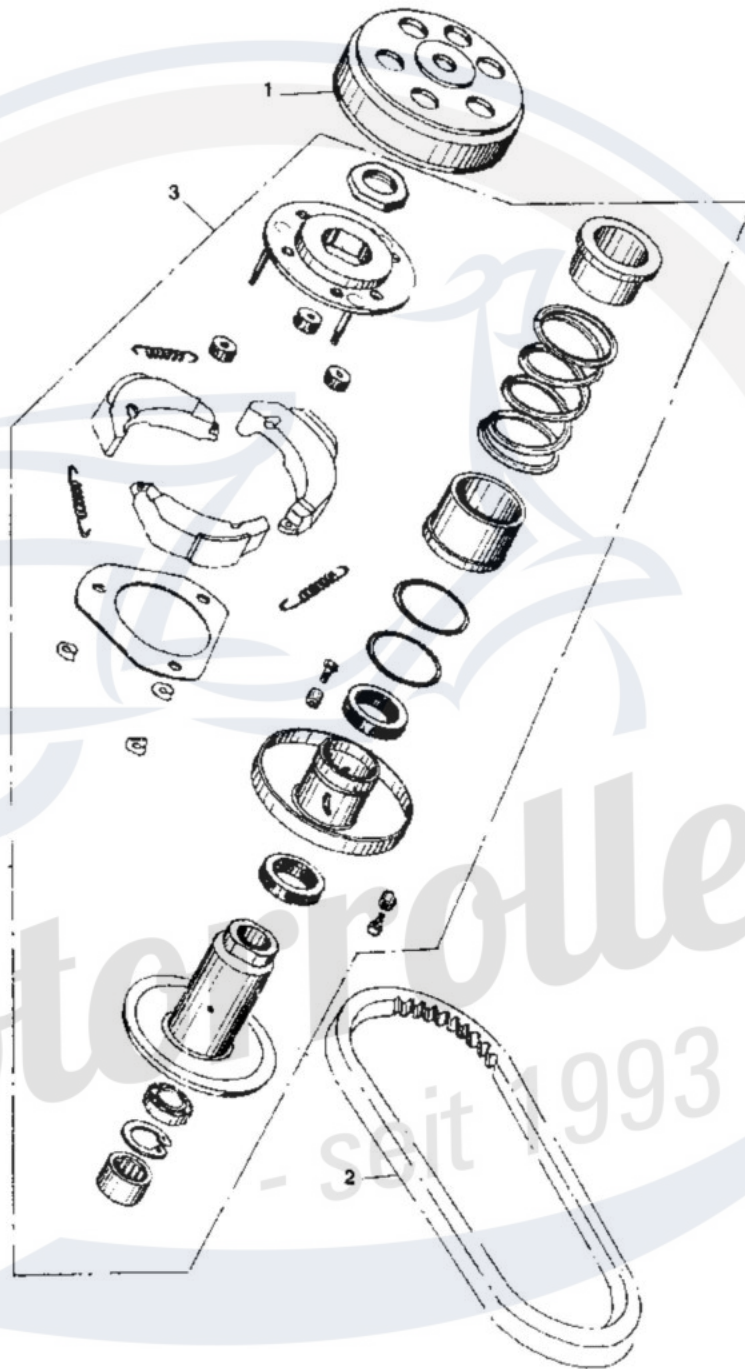
FAN COVER AND SHROUD ASSY.

REF NO.	PART NO.	DESCRIPTION	REGD NO.
1	M150-1009410	COVER COMP. FAN	1
2	M150-1009002	CLAMPER STARTER CABLE	1
3	M150-1009401	DUCT CARBURETOR COOLING	1
4	M150-1009301	SHROUD LOWER	1
5	M150-1009302	SEAL SHROUD LOWER	1
6	M150-1009110	SHROUD COMP. UPPER	1
7	M150-1009103	CLIP HIGH TENSION CORD	1
8	M150-1009102	SEAL SHROUD UPPER	1
9	M150-1009402	SCREW ST4.8X16-F	6
10	M150-1003075	BOLT M6X25	3

OIL PUMP ASSY.

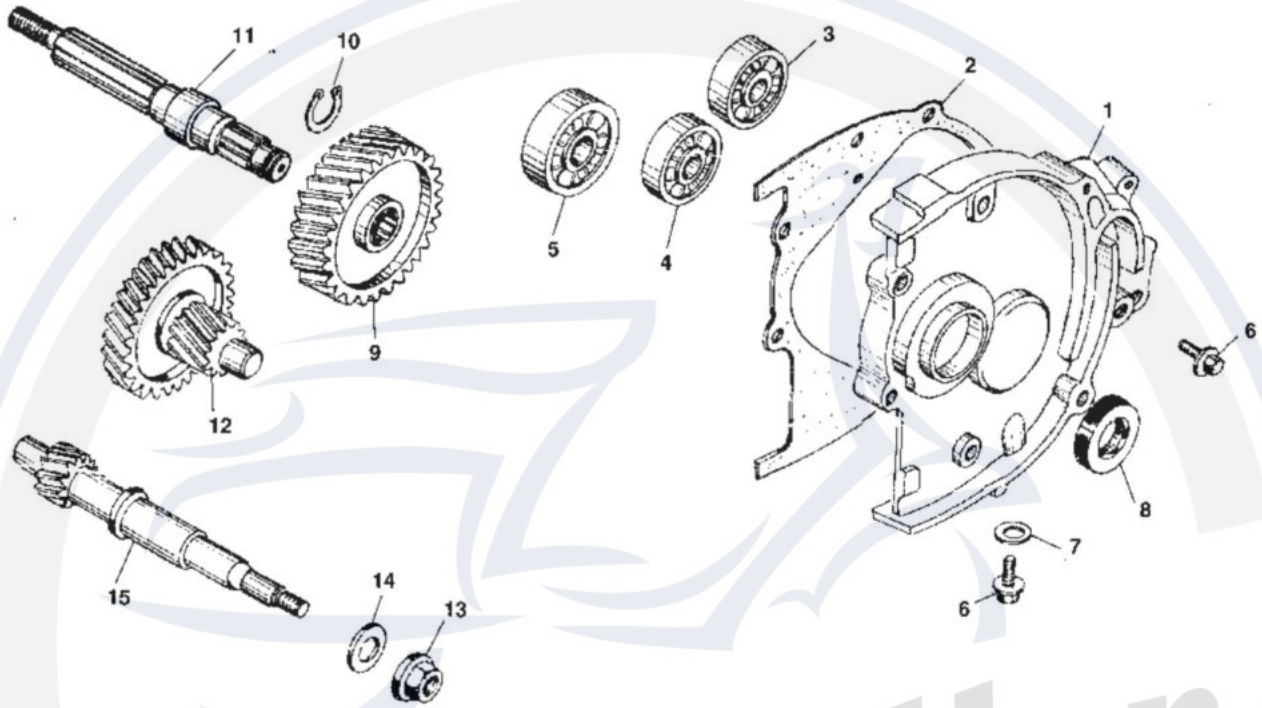


OIL PUMP ASSY.			
REF NO.	PART NO.	DESCRIPTION	REGD NO.
1	M15CM 021000	CHAIN OIL PUMP	1
2	M150-1020002	NUT FLANGE M6	1
3	M150-1020001	SPROCKET OIL PUMP DRIVEN	1
4	M150-B-1003075	BOLT M6X25	2
5	M150-1022000	OIL PUMP SUB ASSY	1

DRIVEN PULLEY AND CLUTCH SUBASSY.**DRIVEN PULLEY AND CLUTCH SUBASSY.**

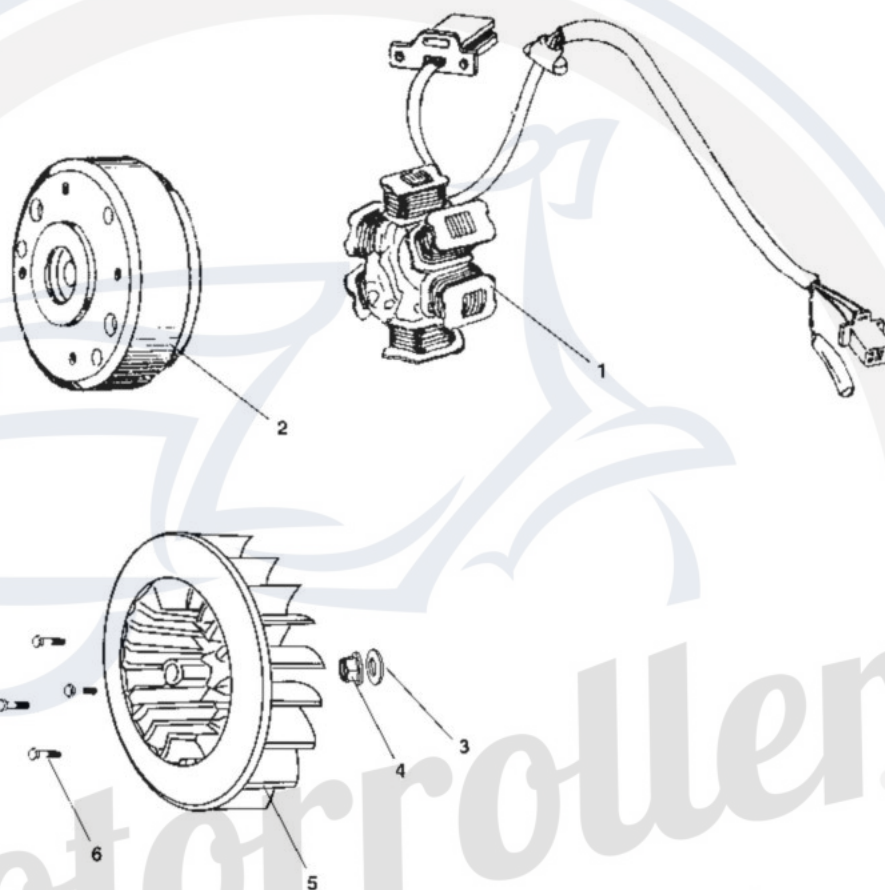
REF NO.	PART NO.	DESCRIPTION	REGD NO.
1	M150-1032000	OUTER CLUTCH ASSY.	1
2	M150-1033000	BELT DRIVE	1
3	M150-1031000	PULLEY ASSY. DRIVEN	1

TRANSMISSION ASSY.



TRANSMISSION ASSY.

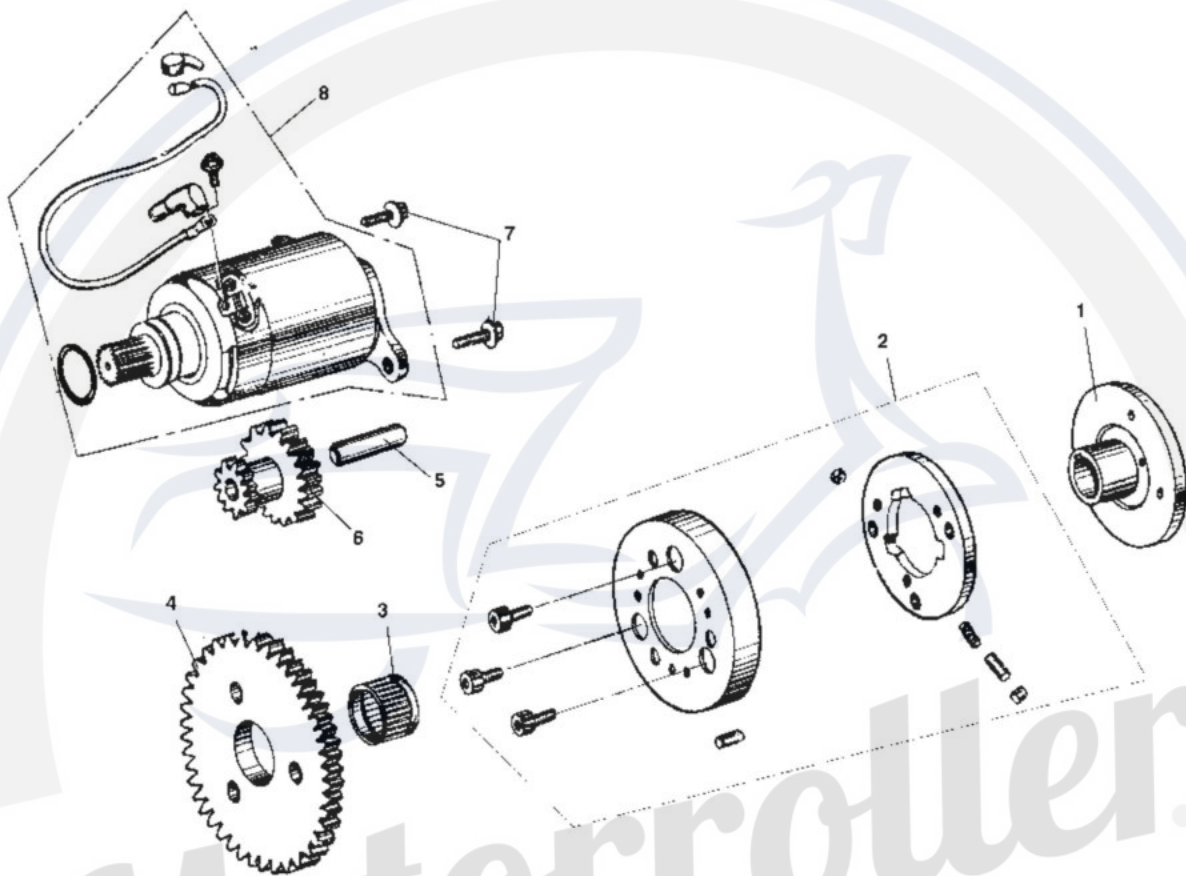
REF NO.	PART NO.	DESCRIPTION	REGD NO.
1	M150-1040001	COVER TRANSMISSION	1
2	M150-1Q41000	GASKET TRANSMISSION COVER	1
3	91004-E6203-KAT	BEARING RADIAL BALL E6203	1
4	91004-E6202-KAT	BEARING RADIAL BALL E6202	1
5	91004-E6204-KAT	BEARING RADIAL BALL E6204	1
6	M150-1040008	BOLT SPECIAL M8X12	2
7	M150-1040002	WASHER 08	1
8	M150-1042000	OIL SEAL 20X32X6	1
9	M150-1040004	GEAR FINAL	1
10	94510-20000	CIRCLIP EXTERNAL 20	1
11	M150-1040003	SHAFT FINAL	1
12	M150-1043000	SHAFT COMP. COUNTER	1
13	M150-1040007	NUT COMPRESSOR FLANGE M12	1
14	M150-1040005	WASHER 012	1
15	M150-1040006	SHAFT DRIVE	1



ELECTRIC SYSTEM

REF NO.	PART NO.	DESCRIPTION	REGD NO.
1	M150-1051200	STATOR COMP.	1
2	M150-1051100	FLYWHEEL COMP.	1
3	M150-1051100-1	WASHER PLAIN 012	1
4	M150-1051100-2	NUT, FLANGE M12	1
5	M150-1051100-3	FAN COMP COOLING	1
6	M150-1051100-4	BOLT FLANGE M6x18	4

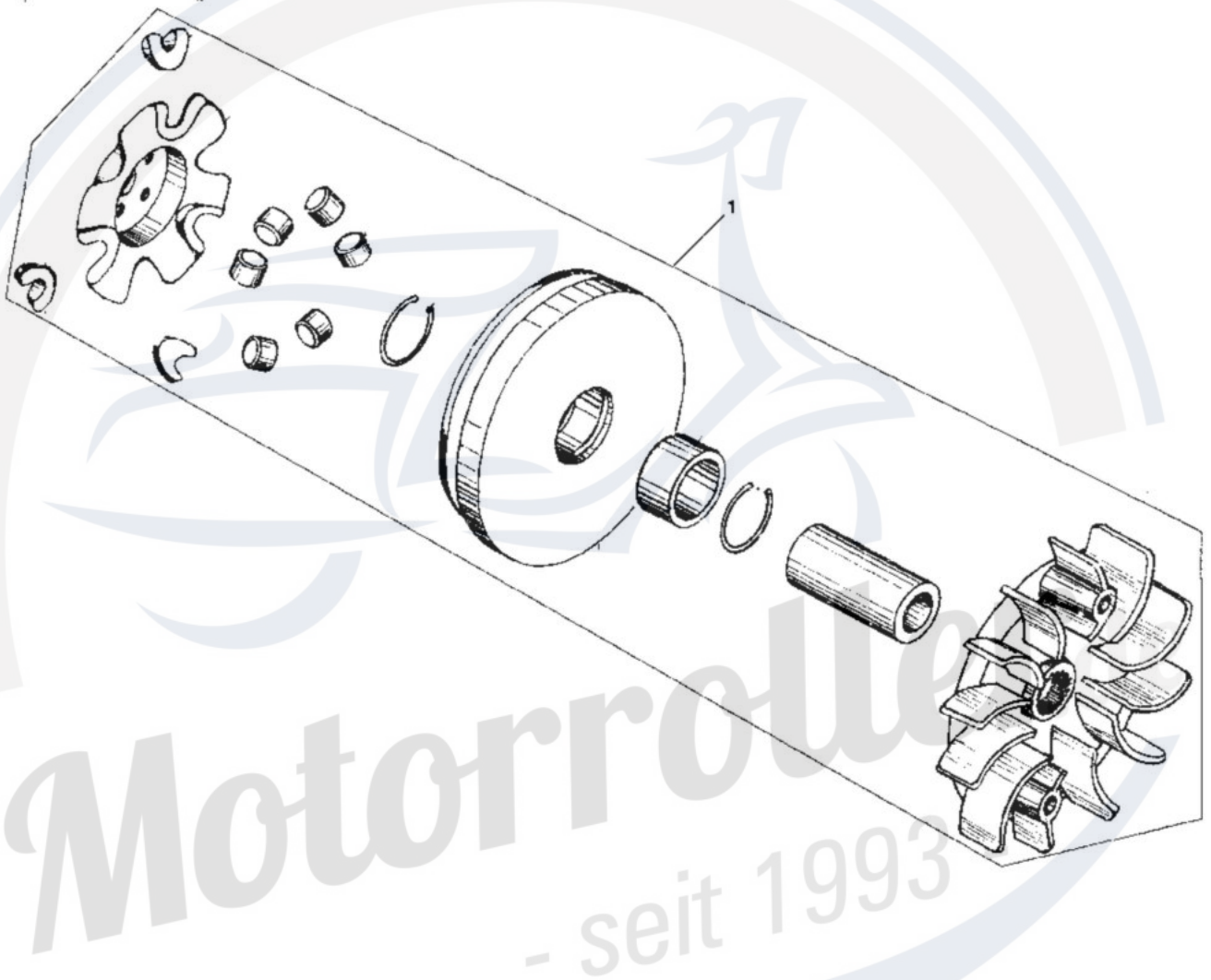
ELECTRIC STARTER ASSY.



ELECTRIC STARTER ASSY.

REF NO.	PART NO.	DESCRIPTION	REGD NO.
1	M150-1060001	FLANGE STARTING CLUTCH	1
2	M150-1063000	OUTER COMP. STARTING CLUTCH ASSY	1
3	M150-1061000	BEARING NEEDLE 28X32X17	1
4	M150-1062000	GEAR COMP. STARTING CLUTCH	1
5	M150-1060002	SHAFT STARTER REDUCTION GEAR	1
6	M150-1060003	GEAR STARTER REDUCTION	1
7	M150-1060005	BOLT FLANGE M6X16	2
8	M150-1064000	MOTOR ASSY. STARTER	1

DRIVE PULLEY SUBASSY.

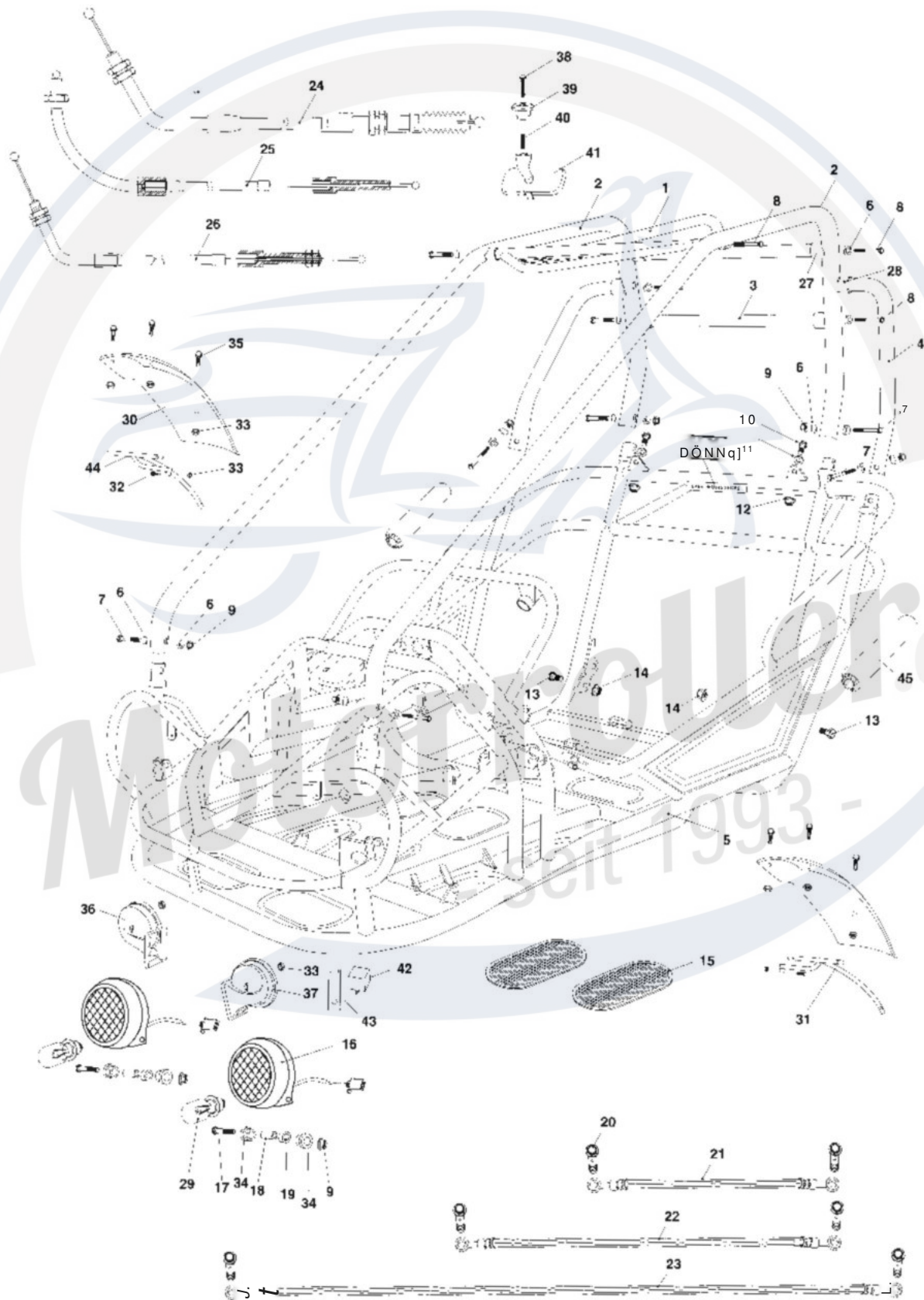


DRIVE PULLEY SUBASSY.			
REF NO.	PART NO.	DESCRIPTION	REGD NO.
1	M150-1071000	PULLEY ASSY. MOVABLE DRIVE	1

CARBURETOR			
REF NO.	PART NO.	DESCRIPTION	REGD NO.
1	16010-KAT-901	GASKET SETA	1
CM	16012-KAT-903	NEEDLE SET JET	1
co	16013-KAT-904	FLOAT SET	1
4	16015-KAT-905	CHAMBER SET. FLOAT	1
oo	16016-KAT-906	SCREW SET A	1
oo	16028-KAT-907	SCREW SET B	1
7	16037-KAT-908	PLATE SET. VALVE	1
oo	16046-KAT-909	BYSTARTER ASSY., AUTO	1
oo	16048-KAT-910	VALVE SET. AIR CUT	1
10	16050-KAT-911	SPRING. COMPRESSION COIL	1
11	16080-KJ9-003	SCREW. PAN M5x12	1
1 CM	16100-KAT-913	CARBURETOR ASSY.	CM
1 co	16107-KAT-914	TOP	1
1	16111-KAT-915	PISTON COMP., VACUUM	1
1	16155-KAT-902	VALVE COMP. FLOAT	1
1 CD	16165-KAT-916	HOLDER. NEEDLE JET	1
17	16179-KAB-670	BINDER	1
1	16190-GJ2-004	CAP HOLDER	1
1 oo	95005-45270-50	TUBE	1
2	93500-04008	SCREW, PAN, M4x8	1
21	93500-04014-1H	SCREW, PAN, M4x14	CM
CM co	93892-04008-18	SCREW-WASHER, M4x8	4
CM CM	93892-04010-18	SCREW-WASHER, M4x10	CM
4	93892-05012-18	SCREW-WASHER, M5x12	CM CM CM 1
LO CD	95002-02079	CLIP, TUBE (B7)	
CM CM CM	95002-02089	CLIP, TUBE (B8)	
27	95005-35200-21	TUBE, 3.5x210	2
NO	16199-GT8-600	TUBE	1
CM	99101-GHB-0112	JET, MAIN 112#	1
oo	99103-GY6-0350	JET, SLOW 35#	1
CO	16100-KAT-923	CARBURETOR BODY	1

FIG. 16

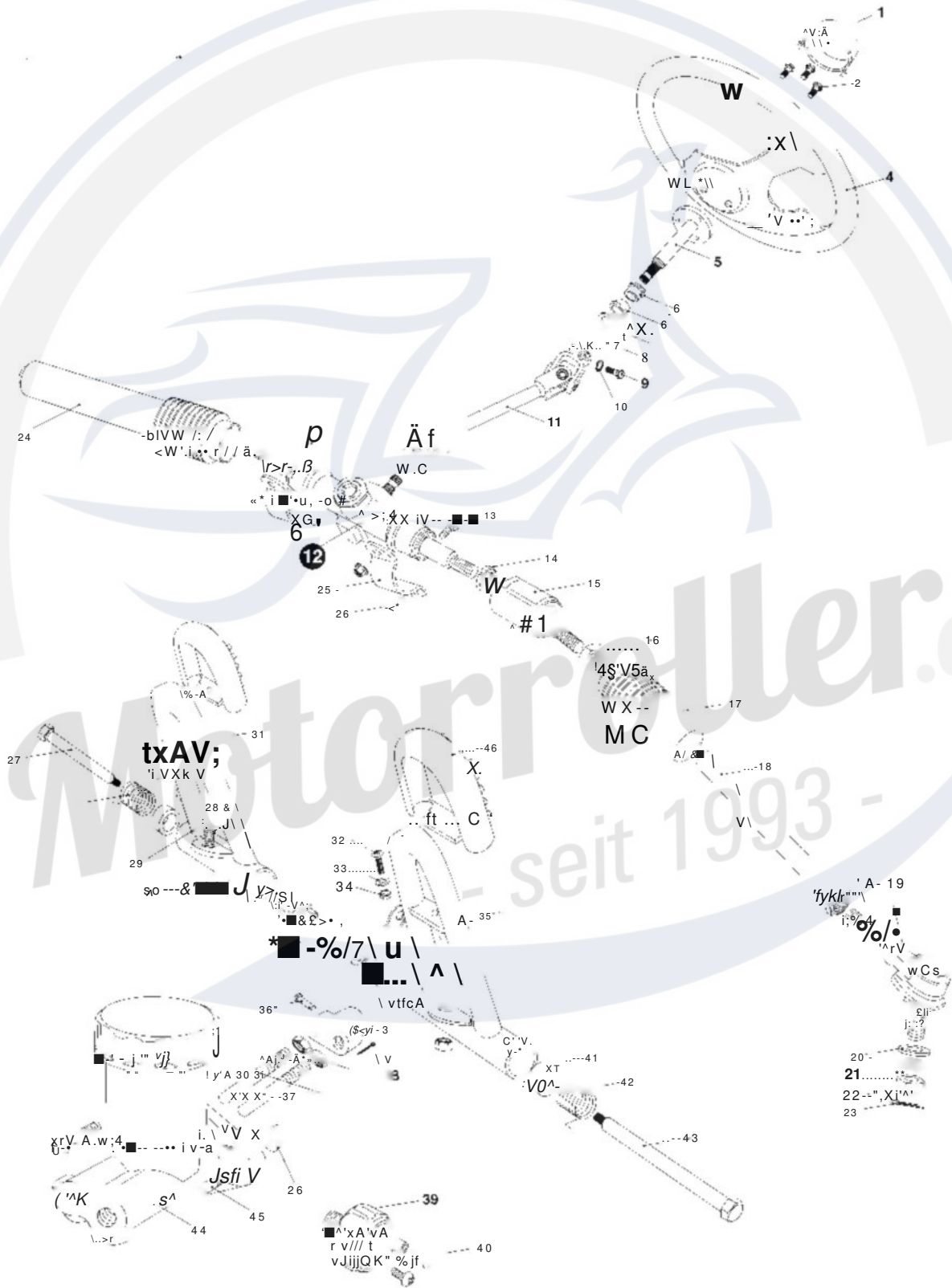
FRAME GROUP



FRAME GROUP			
REF NO.	PART NO.	DESCRIPTION	REGD NO.
1	6000.061	ROLL CAGE CROSS BAR. FR	1
2	8.070.034	ROLL CAGE BAR. LH. RH	?
3	8.080.033	ROLL CAGE CROSS BAR. RR	1
4	8.070.035	ROLL CAGE BAR. L. R. SIDE	2
5	2.000.012	FRAME COMP	1
6	8.010.047	R-WASHER	20
7	9.108.055	BOLT-WASHER M8x1.25x55	8
8	9.908.055	BOLT STRAP M8x 1.25x55	6
9	9.220.008	NUT FLANGE LOCK M8	8
10	9.700.001	BOLT. SPECIAL M7/16"x28	2
11	9.700.002	WASHER BELT 012	2
12	9.700.003	NUT BELT M7/16"	2
13	9.112.025	BOLT-WASHER M12x1.25x25	2
14	9.220.012	NUT FLANGE LOCK M12	2
15	7.020.012	FOOT PLATE. RUBBER	4
16	6.000.104	HEADLIGHT UNIT	2
17	9.108.050	BOLT-WASHER M8x1.25x50	2
18	8.010.048	COLLAR, HEADLIGHT	2
19	8.010.049	BUSH, HEADLIGHT	2
20	9.700.004	BOLT BANJO M 10x24	6
21	6.000.089	HOSE ASSY. L. BRAKE 34"	1
22	6.000.090	HOSE ASSY. R. BRAKE 43"	1
23	6.000.091	HOSE ASSY RR. BRAKE 75"	1
24	6.000.034	CABLE COMP. THROTTLE	1
25	6.000.040	CABLE COMP. REVERSE	1
26	6.000.050	CABLE COMP. PARKING BRAKE	1
27	7.010.017	TUBE SEAT 0 25	6
28	7.010.016	TUBE SEAT 0 32	2
29	9.090.001	BULB. HEADLIGHT	2
30	7.010.034	FENDER. FR	2
31	6.000.067	BRACKEY FRONT FENDER. L	1
32	9.100.640	BOLT M6x40	2
33	9.210.006	NYLON LOCK NUT M6	10
34	7.020.027	RUBBER MOUNT. HEADLIGHT	4
35	9.106.016	BOLT-WASHER M6x16	6
36	6.000.070	HORN. H	1
37	6.000.071	HORN. L	1
38	9.100.525	BOLT M5x25	1
39	8.010.086	MOUNT. REAR MIRROR	1
40	8.040.005	SPRING. REAR MIRROR	1
41	6.000.084	REAR MIRROR	1
42	6.000.072	HORN RELAY	1
43	8.020.095	BRACKEY RELAY	1
44	6.000.102	BRACKEY. FRONT FENDER. R	1
45	6.000.083	COVER. ROBE-RAIL	2

.. FIG. 17

STEERING SHAFT ASSY.



STEERING SHAFT ASSY.

REF NO.	PART NO.	DESCRIPTION	REGD NO.
1	7.010.014	COVER STEERING BOLT	1
2	9.906.012	BOLT STRAP M6x12	3
3	8.030.024	BRACKET. SPINDLE	1
4	7.020.010	STEERING WHEEL	1
5	6.000.092	STEERING SHAFT	1
6	7.010.026	BUSH. STEERING SHAFT	2
7	9.700.020	WASHER. SPECIAL 020	1
8	9.700.120	CIRCLIP 020	1
9	9.100.825	BOLT M8x25	2
10	9.400.008	WASHER. LOCK 08	2
11	6.000.093	STEERING KNUCKLE	1
12	4.000.014	STEERING GEAR	1
13	9.108.025	BOLT-WASHER M8x1.25x25	4
14	9.900.016	ROUND NUT M16x1.5	2
15	4.000.008	STEERING BALL JOINT	2
16	9.200.010	NUT M10	2
17	7.020.002	DUST COVER. L BALL JOINT	1
18	8.010.071	TIE ROD	2
19	6.000.062	ROD END	2
20	9.300.010	WASHER FLAT 010	2
21	9.400.010	WASHER LOCK 010	2
22	9.800.010	NUT, CASTLE M10	2
23	9.500.215	PIN. COTTER 0 2x15	2
24	7.020.202	DUST COVER. R BALL JOINT	1
25	8.020.014	BRACKET STEERING GEAR	2
26	9.220.008	NUT FLANGE LOCK M8	8
27	9.708.145	BOLT. THROTTLE PEDAL M8x1.25x145	1
28	8.040.001	SPRING. THROTTLE PEDAL RETURN. L	1
29	9.108.040	BOLT-WASHER M8x1.25x40	2
30	9.200.008	NUT M8	2
31	4.000.016	THROTTLE PEDAL COMP.	1
32	9.600.515	SCREW. PAN M5x15	2
33	9.300.005	WASHER. FLAT 05	2
34	9.210.005	NYLON LOCK NUT M5	2
35	4.000.015	BRAKE PEDAL COMP	1
36	9.700.624	PIN. 6x24	1
37	8.010.081	PIN. SPINDLE	2
38	9.500.212	PIN COTTER 2X12	1
39	6.000.063	SWITCH ASS Y. BRAKE LAMP	1
40	9.600.306	SCREW. PAN M3x6	2
41	7.010.004	BUSH. PEDAL	4
42	8.040.007	SPRING. BRAKE PEDAL RETURN. R	1
43	9.708.222	BOLT. BRAKE PEDAL M8x1.25x222	1
44	6.000.076	MASTER CYLINDER	1
45	9.108.027	BOLT-WASHER M8x1.25x27	2
46	7.020.004	PEDAL PAD	2

FIG. 18

SUSPENSION ARM ASSY.

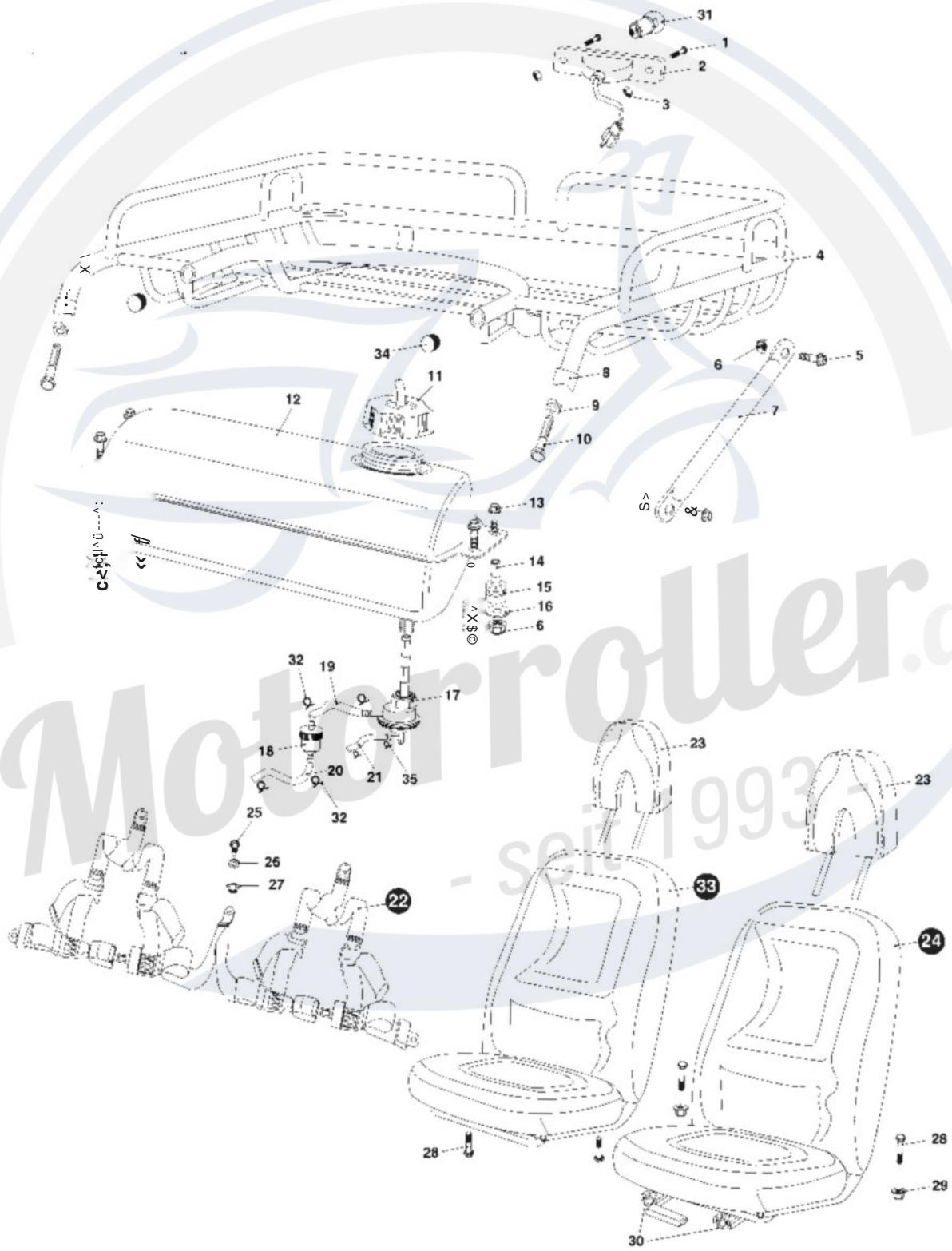


Aktuelle Preise erfahren sie auf www.motorroller.de

SUSPENSION ARM ASSY.			
REF NO.	PART NO.	DESCRIPTION	REGD NO.
1	2.000.019	SUPPORT. STRUT AND SPINDLE. R	1
2	9.108.105	BOLT-WASHER M8x 1.25x105	1
3	8.010.015	COLLAR. UPPER SUSPENSION ARM	1
4	7.010.003	BUSH. UPPER SUSPENSION ARM	1
5	4.000.004	UPPER SUSPENSION ARM	1
6	9.220.008	NUT. FLANGE LOCK M8	2
7	9.220.012	NUT. FLANGE LOCK M12	4
8	7.020.025	DUST SEAL. BALL HEAD	4
9	8.020.053	SPACER. BALL HEAD	4
10	2.000.023	SUPPORT. STRUT AND SPINDLE. L	1
11	9.908.014	BOLT STRAP M8x14	4
12	8.010.014	COLLAR. LOWER SUSPENSION ARM	4
13	9.906.012	BOLT STRAP M6x12	12
14	6.000.097	FR. WHEEL ASS'Y. R 19x7-8	1
15	7.020.016	PAD SET FR BRAKE CALIPER	2
16	6.000.028	FRONT BRAKE CALIPER. L	1
17	8.010.054	DISC.FR. BRAKE	2
1	9.040.002	DUST SEAL 47x25-7	2
18	9.030.002	BEARING 6204	2
19	9.710.031	BOLT. TIRE M10x1.25x31	8
20	8.010.055	HUB. FR. WHEEL	2
21	9.030.003	BEARING 6203	2
22	9.040.003	DUST SEAL 42x27-7	2
23	7.020.033	TIRE. FR 19x7-8	2
24	6.000.096	RIM. FR	2
25	9.300.010	WASHER. FLAT 010	8
27	9.220.010	NUT. FLANGE LOCK M10	16
28	8.010.043	SPACER. FR. HUB	2
29	9.300.014	WASHER. FLAT 014	2
30	9.800.014	NUT. CASTLE M14	2
31	9.500.330	PIN. COTTER 0 3x30	2
32	7.020.009	COVER. FR. HUB	2
33	9.110.040	BOLT-WASHER M10x 1.25x40	1
34	6.000.095	FRONT BRAKE CALIPER. R	1
35	6.000.325	CUSHION ASSY. FR L=325	2
36	9.110.080	BOLT-WASHER M10x1.25x80	4
37	8.020.034	DUST CAP. LOWER SUSPENSION ARM	8
38	7.010.002	BUSH. LOWER SUSPENSION ARM	1
39	9.040.001	O-RING 021.2x2.65	1
40	4.000.023	LOWER SUSPENSION ARM ASSY.	1
41	6.000.003	FR. WHEEL ASS'Y. L 19x7-8	1

FIG. 19

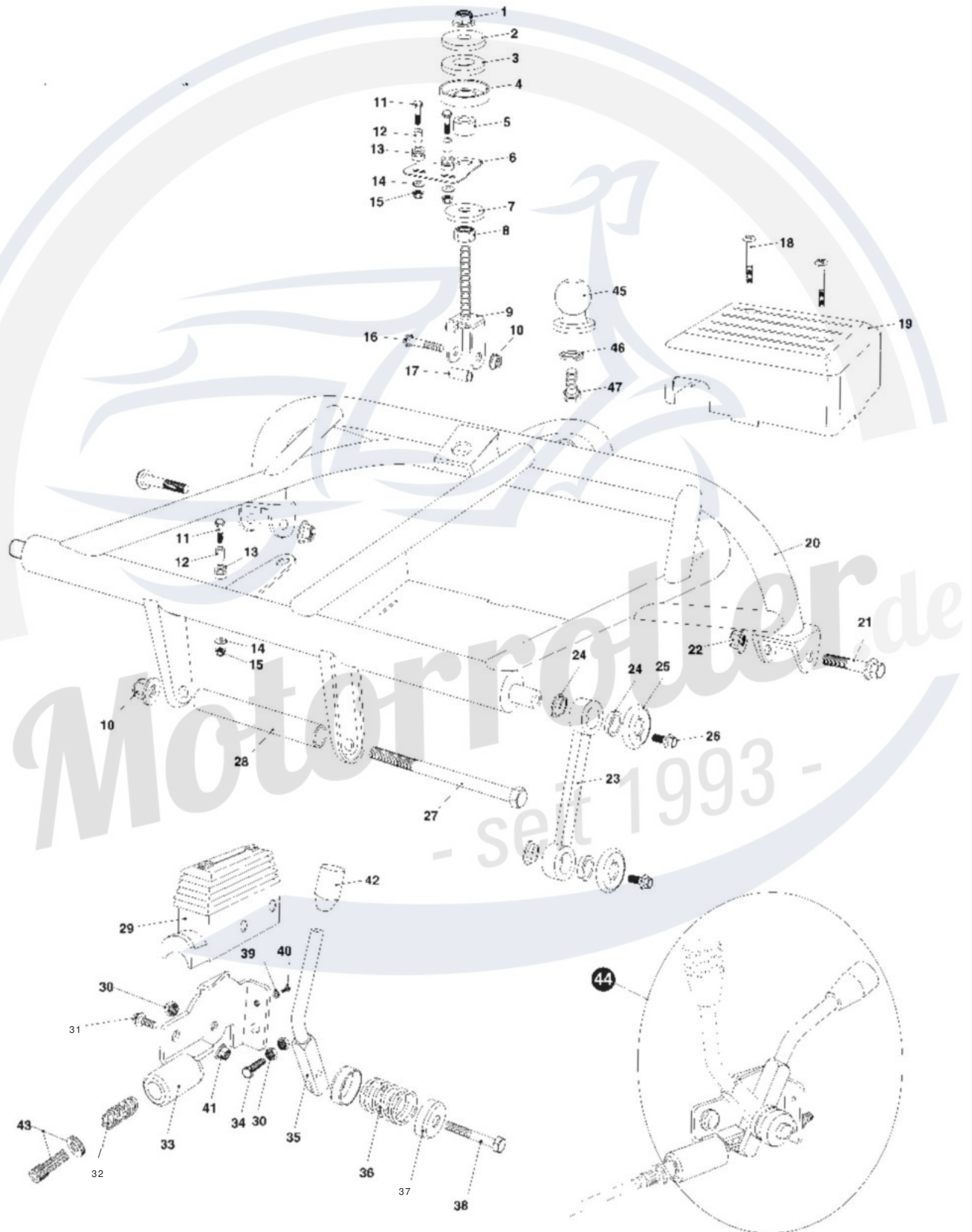
REAR CARGO RACK/S EAT/BELT



REAR CARGO RACK/S EAT/BELT			
REF NO.	PART NO.	DESCRIPTION	REGD NO.
1	9.600.520	SCREW. PAN M5x20	2
2	6.000.010	TAIL LIGHT	1
3	9.210.005	NYLON LOCK NUT M5	2
4	2.000.016	REAR CARGO RACK	1
5	9.108.020	BOLT-WASHER M8x1.25x20	4
6	9.220.008	NUT. FLANGE LOCK M8	8
7	8.080.029	SUPPORTER. REAR CARGO RACK	2
8	7.010.016	TUBE SEAT 032	2
9	8.010.047	R-WASHER	2
10	9.908.055	BOLT STRAP M8x1.25x55	2
11	6.000.053	CAP COMP. FUEL FILLER	1
12	4.000.017	TANK COMP. FUEL	1
13	9.108.025	BOLT-WASHER M8x1.25x25	4
14	8.010.034	COLLAR. TANK COMP	4
15	7.020.005	RUBBER MOUNT	4
16	9.300.008	WASHER FLAT 08	4
17	6.000.046	COCK ASSY FUEL AUTO	1
18	6.000.056	FILTER	1
19	7.020.030	TUBE COMP. FUEL #1	1
20	7.020.029	TUBE COMP. FUEL #2	1
21	7.020.031	TUBE COMP. VACUUM	1
22	6.000.045	BELT SAFETY	1
23	6.000.094	HEAD-REST	2
24	6.000.081	SEAT COMP. L	1
25	9.700.001	BOLT SPECIAL M7/16"x28	1
26	9.700.002	WASHER. BELT 012	1
27	9.700.003	NUT. BELT M7/16"	1
28	9.900.840	BOLT STRAP M8x1.25x40	1
29	9.220.008	NUT. FLANGE LOCK M8	1
30	6.000.057	RAIL SET. SEAT	1
31	9.090.002	BULB. TAIL LIGHT	1
32	8.040.009	CLIP. FUEL TUBE	1
33	6.000.082	SEAT COMP. R	1
34	7.020.032	COVER. TUBE	2
35	8.040.008	CLIP. VACUUM TUBE	2
			4

FIG.20

REAR SWING ARM ASSY. UPPER

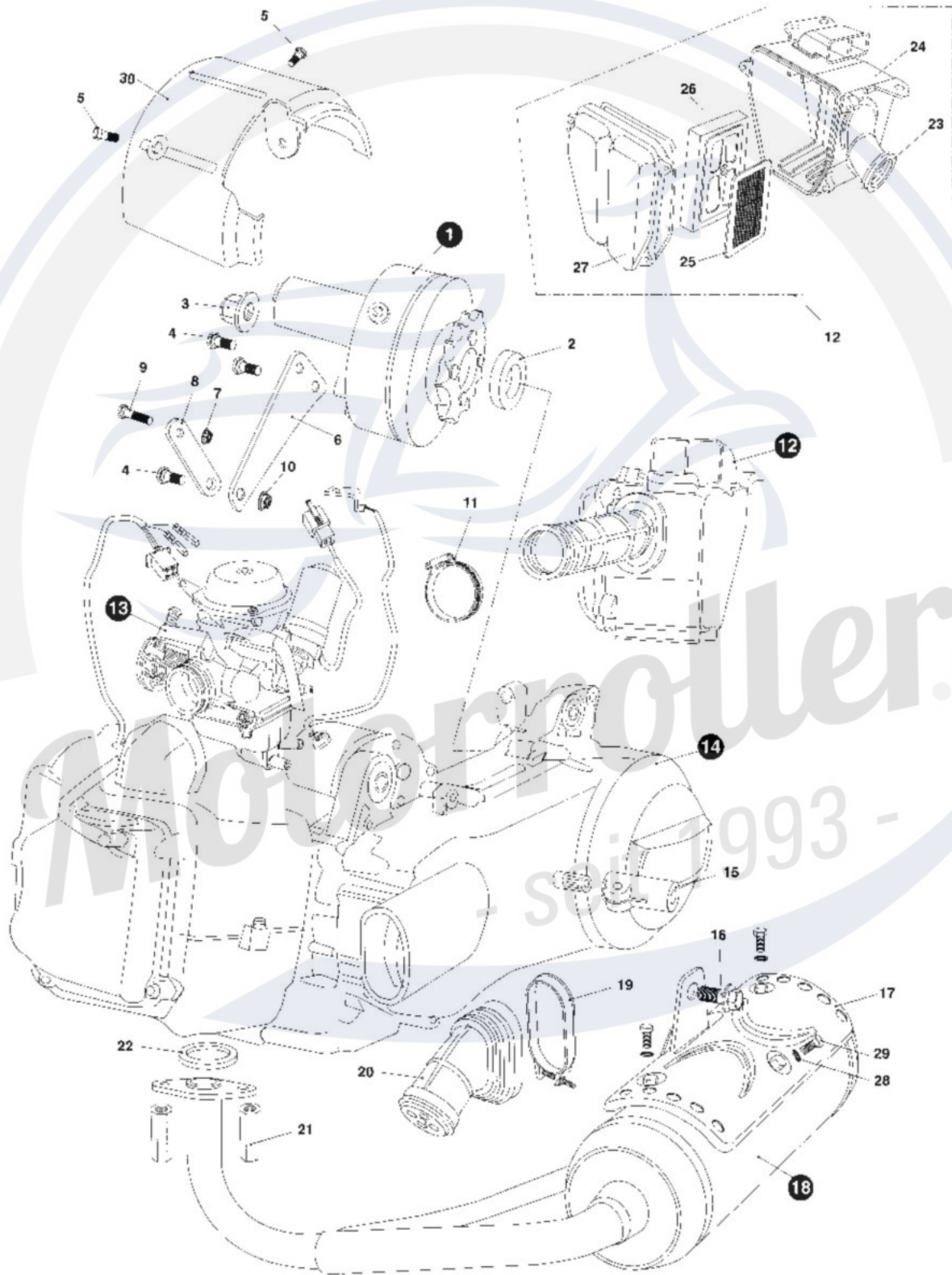


REAR SWING ARM ASS'Y. UPPER

REF NO.	PART NO.	DESCRIPTION	REGD NO.
1	9.220.012	NUT FLANGE LOCK M12	1
2	8.010.042	WASHER ENGINE MOUNT LINK	1
3	7.020.001	CUSHION. ENGINE MOUNT LINK	1
4	8.020.045	SPACER. ENGINE MOUNT LINK	1
5	8.010.041	COLLAR. ENGINE MOUNT LINK	1
6	8.020.044	BRACKET AIR CLEANER ASS'Y	1
7	9.300.012	WASHER. FLAT 012	1
8	9.200.012	NUT M12	1
9	6.000.026	ENGINE MOUNT LINK	1
10	9.220.010	NUT. FLANGE LOCK M10	1
11	9.100.635	BOLT M6x35	3
12	8.010.034	COLLAR. BRACKET	3
13	7.020.005	RUBBER MOUNT	3
14	9.300.006	WASHER 06	3
15	9.210.006	NYLON LOCK NUT M6	3
16	9.110.045	BOLT-WASHER M10x1.25x45	1
17	8.010.076	COLLAR. ENGINE MOUNT LINK	1
18	9.600.655	SCREW. PAN M6x55	2
19	7.010.029	COVER. ELECTRIC ASS'Y	1
20	2.000.018	REAR SWING ARM ASS'Y. UPPER	1
21	9.112.060	BOLT-WASHER M12x1.25x60	2
22	9.220.012	NUT. FLANGE LOCK M12	2
23	8.030.001	CON' ROD	2
24	7.010.008	BUSH. CON' ROD	8
25	8.020.013	SPACER. CON' ROD	4
26	9.108.016	BOLT-WASHER M8x1.25x16	4
27	9.710.195	BOLT-WASHER M 10x1.25x195	1
28	8.010.025	COLLAR ENGINE MOUNT	1
29	7.020.024	COVER REVERSE LEVER	2
30	9.210.006	NYLON LOCK NUT M8	6
31	9.108.020	BOLT-WASHER M8x1.25x20	2
32	8.040.004	SPRING. CABLE	1
33	6.000.064	BRACKET LEVER	2
34	9.100.830	BOLT M8x30	2
35	6.000.065	LEVER. REVERSE. PARKING BRAKE	2
36	8.040.003	SPRING. LEVER	2
37	8.020.082	SPACER. LEVER	4
38	9.108.040	BOLT-WASHER M8x1.25x40	2
39	9.300.005	WASHER FLAT 05	2
40	9.600.512	SCREW. PAN M5x12	2
41	9.220.008	NUT FLANGE LOCK M8	2
42	7.020.026	COVER. LEVER. GREEN / BLACK	2
43	6.000.051	ROD ADJUSTING CABLE	2
44	6.000.042	PARKING BRAKE/REVERSE LEVER ASS'Y.	2
45	3.010.084	TOW BALL	1
46	9.400.018	WASHER LOCK 0 18	1
47	9.118.040	BOLT M18x40	1

FIG.21

ENGING/MUFFLER/AIR CLEANER

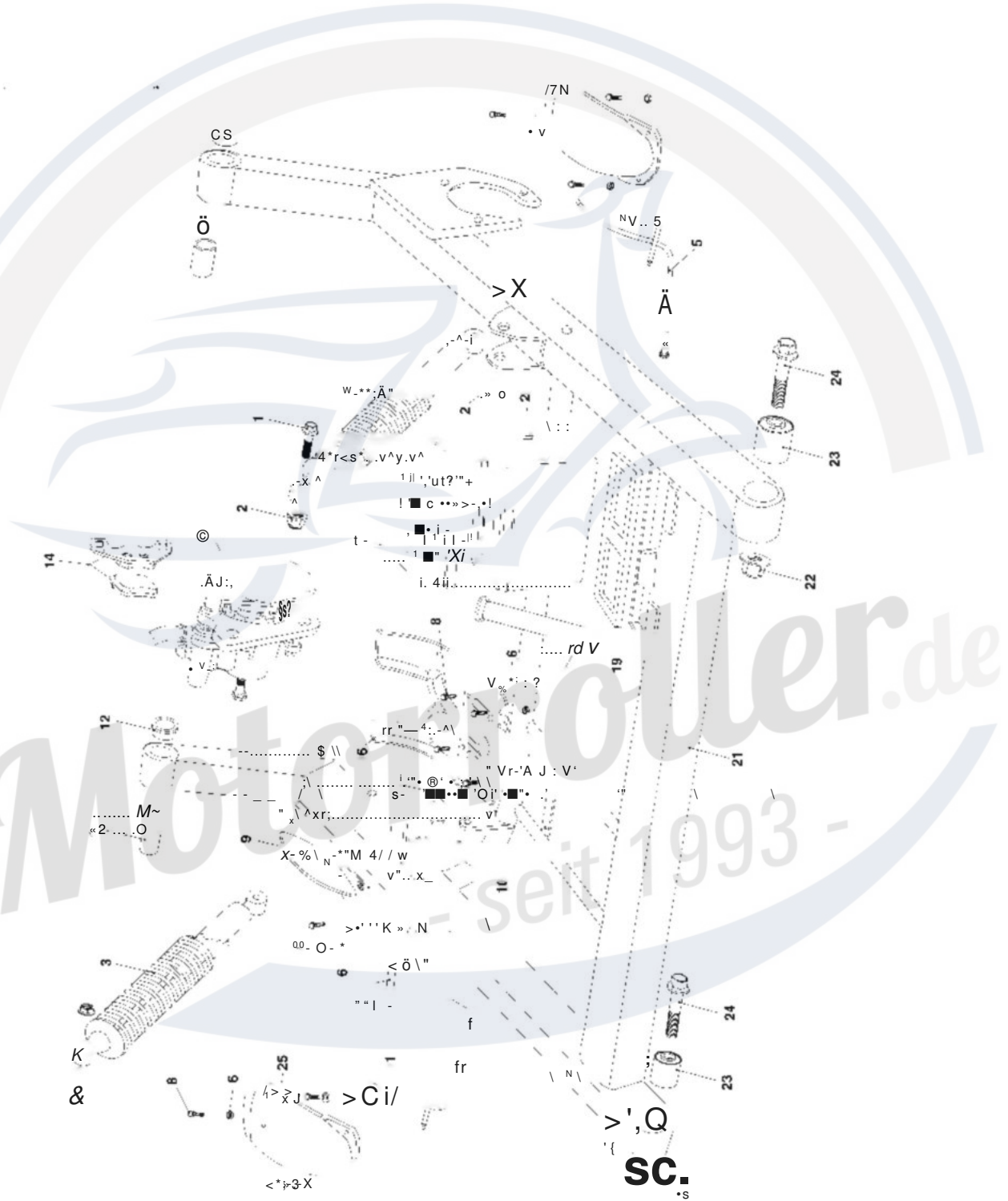


ENGINING/MUFFLER/AIR CLEANER

REF NO.	PART NO.	DESCRIPTION	REGD NO.
1	6.000.019	REVERSE ASST	1
2	8.010.050	INTERNAL SPACER. REVERSE	1
3	9.220.016	NUT FLANGE LOCK M16	1
4	9.910.020	BOLT STRAP M10x1.25x20	3
5	9.108.016	BOLT-WASHER M8x16	2
6	8.020.057	BRACKET. REVERSE	1
7	9.220.008	NUT FLANGE LOCK M8	1
8	8.020.058	CONNECTOR PANEL. REVERSE	1
9	9.908.040	BOLT STRAP M8x1.25x40	1
10	9.220.010	NUT FLANGE LOCK M10	1
11	8.020.056	BAND. AIR CLEANER CONNECTING TUBE	1
12	6.000.017	AIR CLEANER ASST	1
13	6.000.024	CARBURETOR	1
14	2.000.009	ENGINE. 150cc	1
15	8.030.005	RACK SUPPORT. MUFFLER	1
16	9.110.020	BOLT-WASHER M10x1.25x20	1
17	8.020.091	PROTECTOR. MUFFLER	1
18	6.000.074	MUFFLER COMP. EX	1
19	8.020.055	CLAMP BOOT	1
20	6.000.100	BOOT. SIDE CASE	1
21	9.040.027	NUT MUFFLER JOINT M6	2
22	9.040.005	GASKET EX. PIPE	1
23	7.020.013	AIR CLEANER CONNECTING TUBE	1
24	7.010.021	CASE COMP. AIR CLEANER	1
25	7.010.022	ELEMENT. AIR CLEANER	1
26	7.010.023	ELEMENT. AIR CLEANER SECOND	1
27	7.010.024	COVER AIR CLEANER	2
28	9.400.005	WASHER LOCK 06	2
29	9.100.612	BOLT M6x12	2
30	7.010.033	CHAIN PROTECTOR. RR	1

FIG. 22

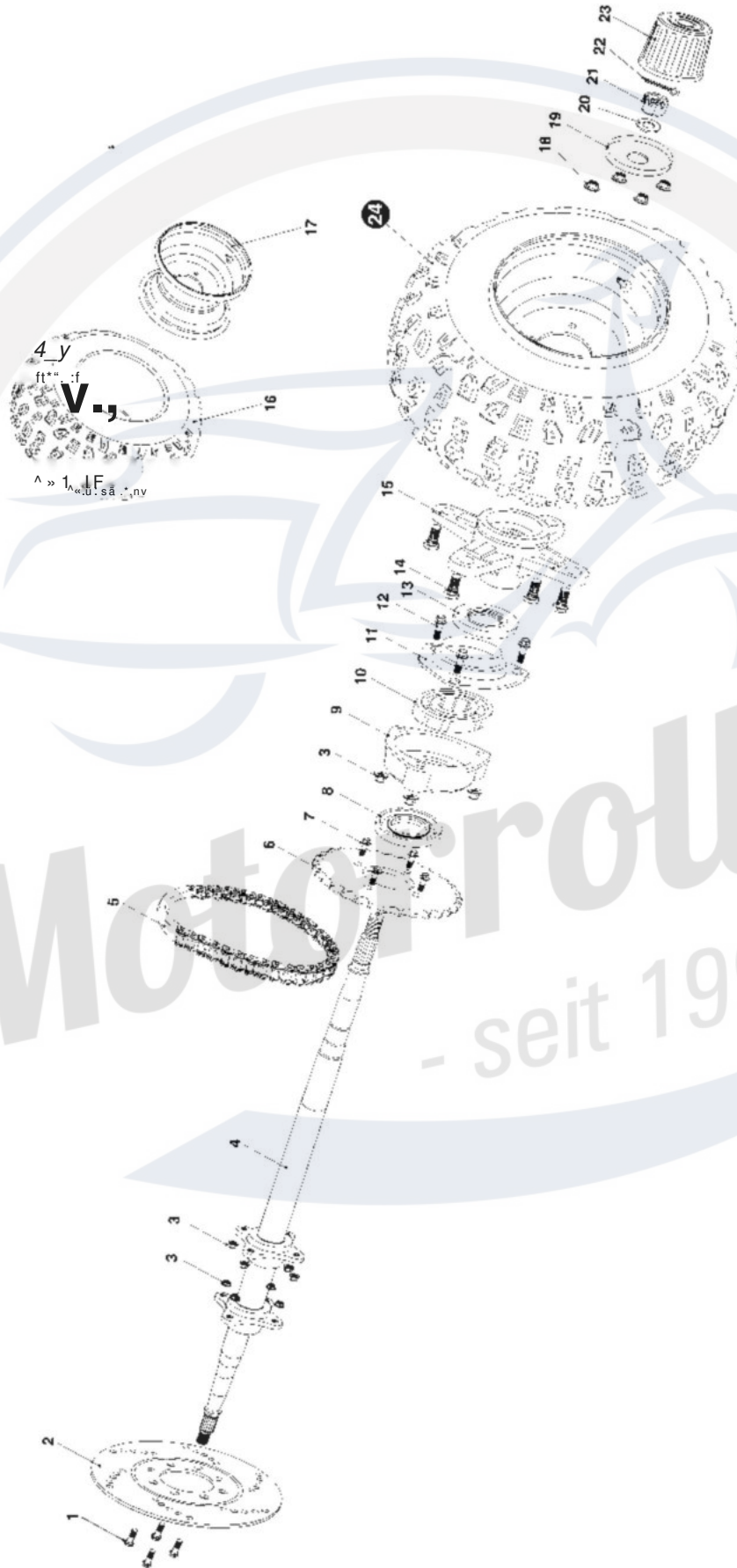
REAR SWING ARM



REAR SWING ARM			
REF NO.	PART NO.	DESCRIPTION	REGD NO.
1	9.110.040	BOLT-WASHER M1 0x 1.25x40	4
2	9.220.010	NUT FLANGE LOCK M10	4
3	6000.006	CUSHION ASS'Y. RR	2
4	9.908.100	BOLT STRAP M8x1 25x 100	1
5	6.000.101	BRACKEY. REAR FENDER. L	1
6	9.210.006	NYLON LOCK NUT M6	12
7	9.108.045	BOLT-WASHER M8x1.25x45	2
8	9.906.016	BOLT-WASHER M6x16	12
9	7.010.031	COVER. DISC. RR	1
10	9.908.012	BOLT STRAP M8x1.25x12	1
11	6.000.068	BRACKEY. REAR FENDER. R	1
12	7.010.006	BUSH. SWING ARM	4
13	8.010.028	COLLAR. SWING ARM	2
14	7.020.022	PAD SET. RR. BRAKE	1
15	6.000.229	CALIPER ASS'Y. RR	1
16	7.010.032	GUARD CHAIN. DISC	1
17	7.010.028	COVER. BATTERY	1
18	7.020.023	BAND. BATTERY	1
19	7.020.020	CUSHION BATTERY UNDER	1
20	6.000.085	BATTERY (YTX12-BS)	1
21	2.000.202	RR. SWING ARM COMP. UNDER	1
22	9.220.012	NUT FLANGE LOCK M12	2
23	7.020.008	CUSHION BUSH. SWING ARM	2
24	9.112.060	BOLT-WASHER M 12x1.25x60	2
25	7.010.034	FENDER. RR	2

FIG.23.....

REAR HOUSING

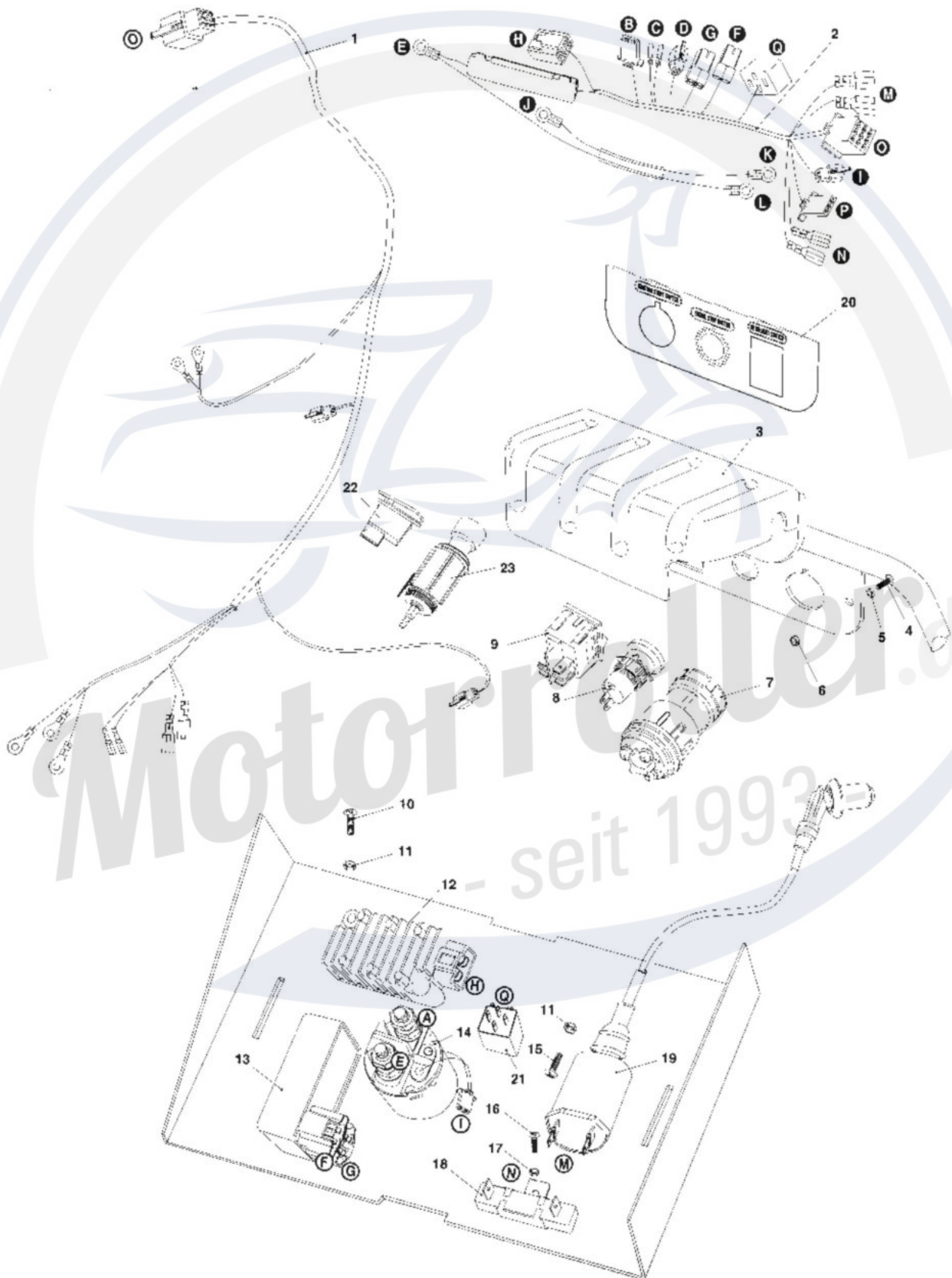


Motorroller.de
- seit 1993 -

REAR HOUSING				
REF NO.	PART NO.	DESCRIPTION	REGD NO.	
1	9.108.022	BOLT-WASHER M8x1.25x22	4	
2	8.010.053	DISC. RR. BRAKE	1	
3	9.220.008	NUT. FLANGE LOCK M8	14	
4	8.010.057	REAR AXLE	1	
5	9.070.002	DRIVE. CHAIN O-RING	1	
6	8.010.077	REAR SPROCKET	1	
7	9.108.027	BOLT-WASHER M 8x1.25x27	4	
8	9.040.006	DUST SEAL 50X34-7	2	
9	8.030.008	HOUSING COMP RR. AXLE BRG	2	
10	9.030.006	BEARING 6206	2	
11	8.020.028	BEARING BASE	2	
12	9.108.040	BOLT-WASHER M 8x1.25x40	6	
13	9.040.007	DUST SEAL 42X30-7	2	
14	9.710.031	BOLT. TIRE M10x1.25x31	8	
15	8.010.056	HUB. REAR AXLE	2	
16	7.020.035	TIRE. RR 22x10-10	2	
17	6.000.105	RIM. RR	2	
18	9.220.010	NUT FLANGE LOCK M10	8	
19	8.020.029	HOLDER. RR. COVER	2	
20	9.700.016	SPACER. RR WHEEL 016	2	
21	9.800.016	NUT. CASTLE M16	2	
22	9.500.430	PIN. COTTER 04X30	2	
23	7.020.009	COVER. RR. HUB	2	
24	6.000.052	REAR WHEEL ASS'Y.	2	

FIG. 24

WIRE HARNESS/ELECTRICAL

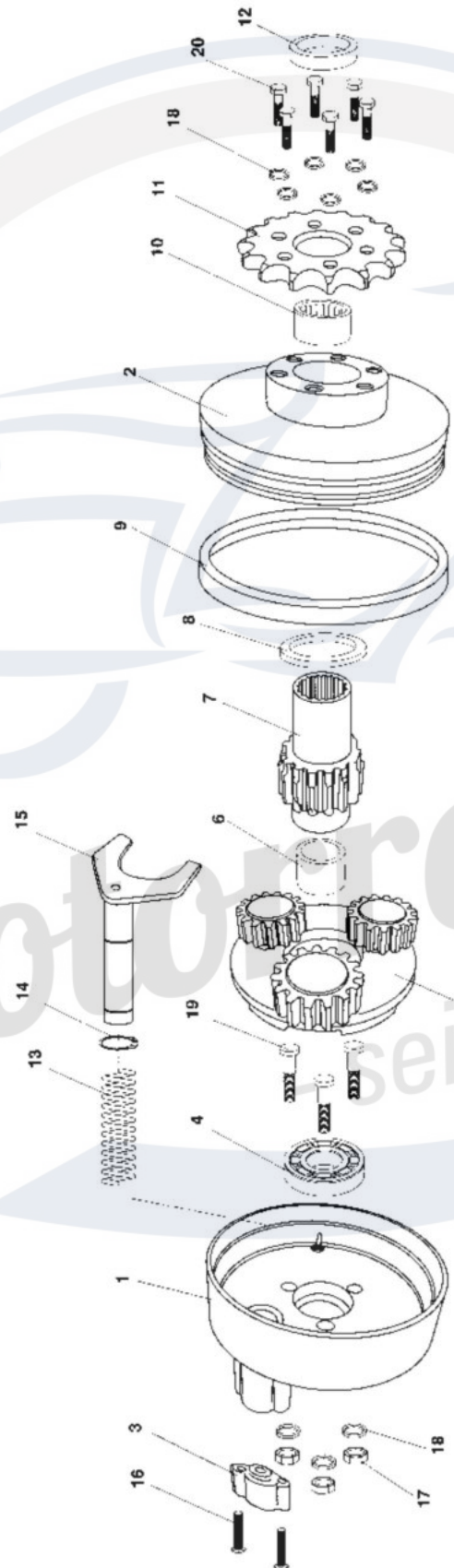


WIRE HARNESS/ELECTRICAL

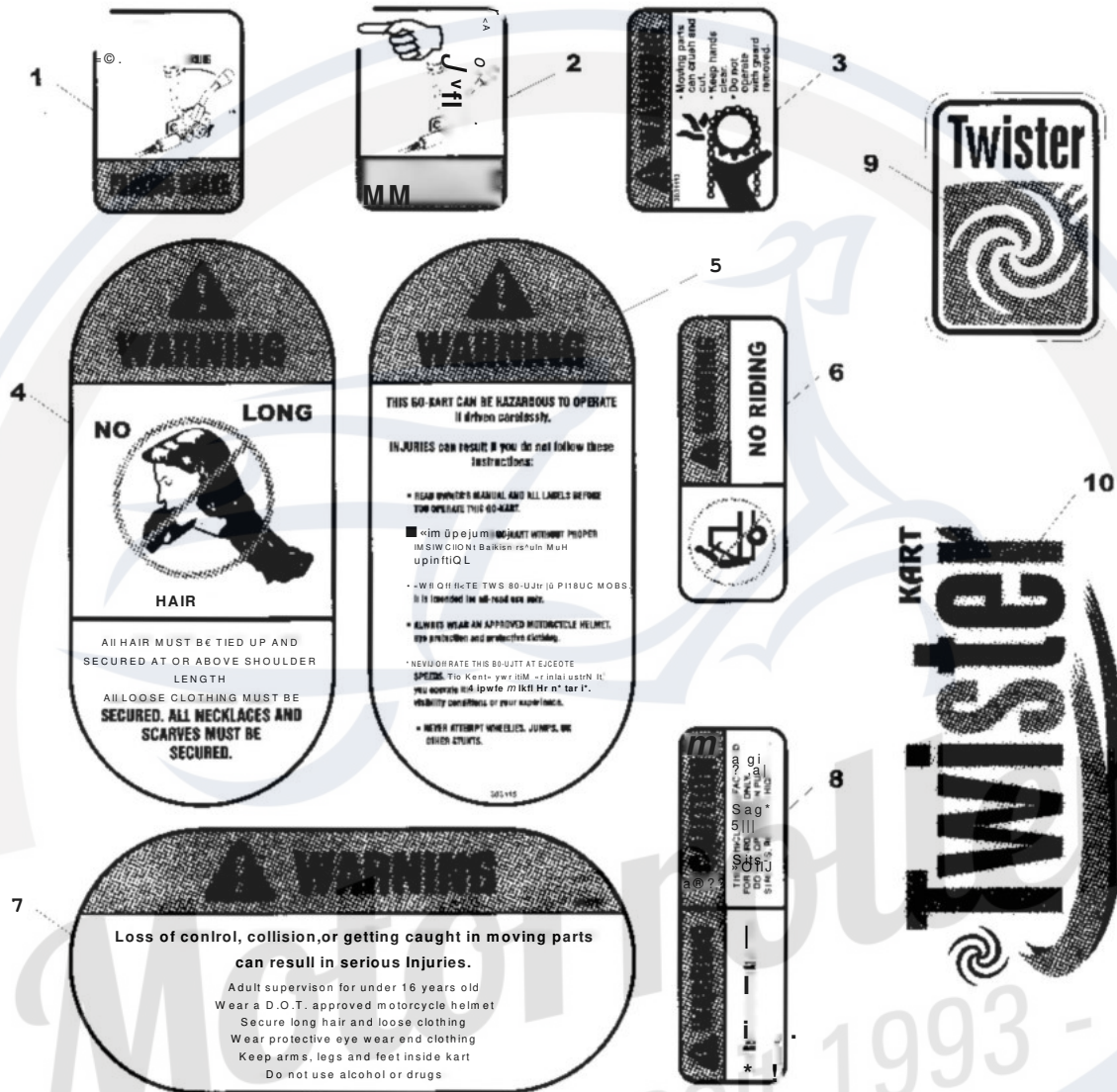
REF NO.	PART NO.	DESCRIPTION	REGD NO.
1	6.000.078	HARNESS. WIRE	1
2	6.000.103	SOCKET COMP	1
3	7.010.027	COVER. SWITCH	1
4	9.600.515	SCREW. PAN M5x15	2
5	9.300.005	WASHER 05	2
6	9.210.005	NYLON LOCK NUT M5	2
7	6.000.020	IGNITION START SWITCH	1
8	6.000.047	ENGINE STOP BUTTON	1
9	6.000.058	HEADLIGHT SWITCH	1
10	9.100.620	BOLT M6X20	1
11	9.210.006	NYLON LOCK NUT M6	3
12	6.000.036	RECTIFIER COMP. REGULATE	1
13	6.000.037	UNIT COMP. C.D.I	1
14	6.000.035	STARTING RELAY	1
15	9.600.525	SCREW. PAN M5X25	1
16	9.600.410	SCREW. PAN M4x10	1
17	9.210.004	NYLON LOCK NUT M4	1
18	6.000.038	RESISTOR COMP 10W 10Ω	1
19	6.000.025	COIL COMP. IGNITION	1
20	7.010.030	LABEL. IGNITION START SWITCH	1
21	6.000.072	CONTROL RELAY	1
22	6.000.079	HORN BUTTON	1
23	6.000.087	CIGAR LIGHTER	1

FIG.25

REVERSE ASSY.



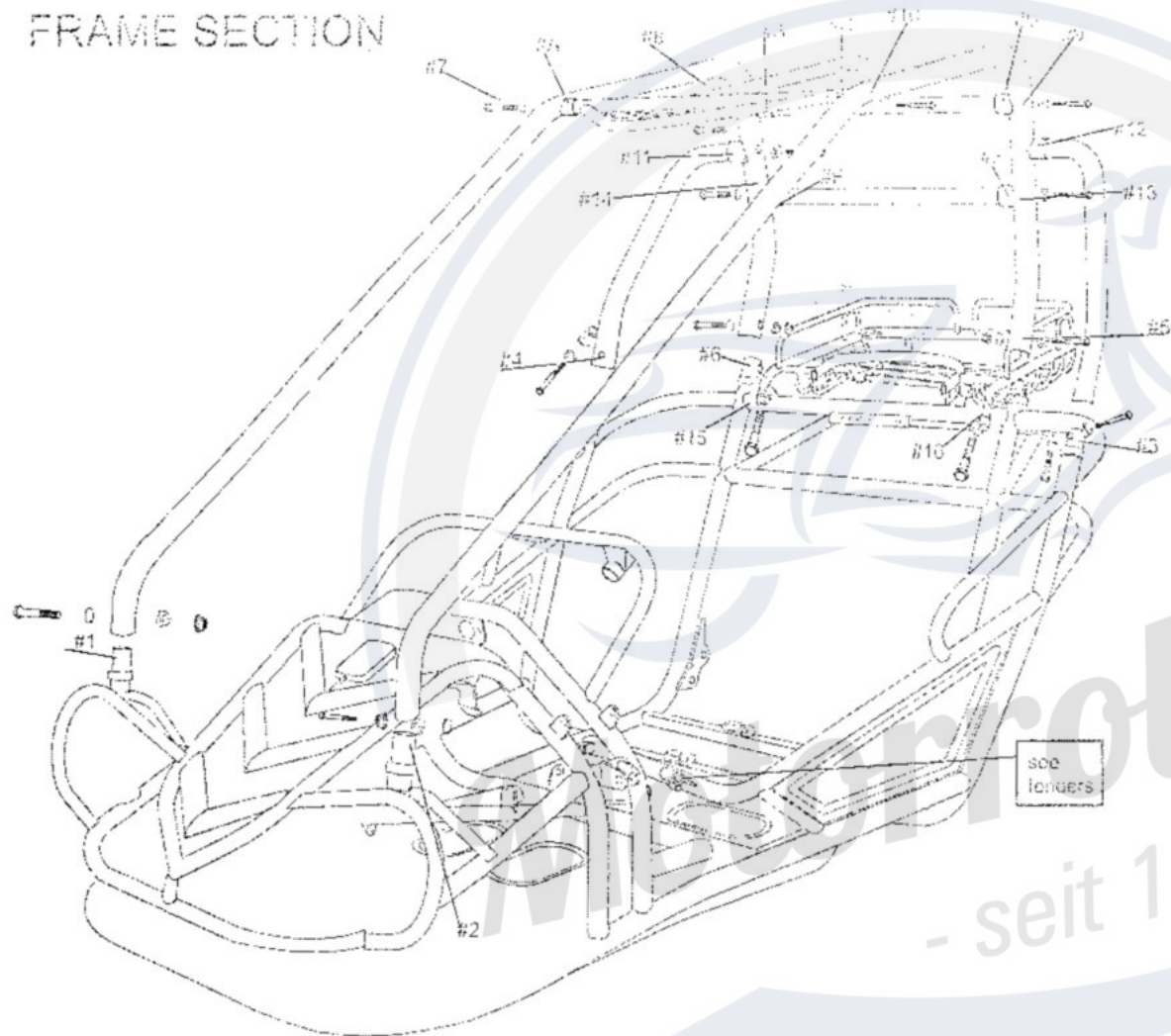
WARNING STICKERS



WARNING STICKERS

REF NO.	PART NO.	DESCRIPTION	REGD NO.
1	9.090.007	LABEL PARKING BRAKE	1
2	9.090.008	LABEL REVERSE LEVER	1
3	9.090.009	LABEL CHAIN GUARD	1
4	9.090.010	LABEL NO LONG HAIR	1
5	9.090.011	LABEL WARNING	1
6	9.090.012	LABEL NO CLIMBING	1
7	9.090.013	LABEL WARNING	1
8	9.090.014	LABEL SEAT BELT	1
9	9.090.015	LABEL TWISTER. FR	1
10	9.090.016	LABEL TWISTER	3

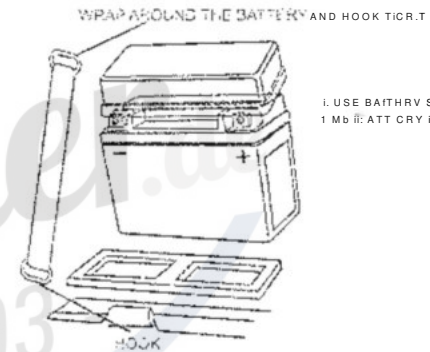
FRAME SECTION



SETUP INSTRUCTIONS

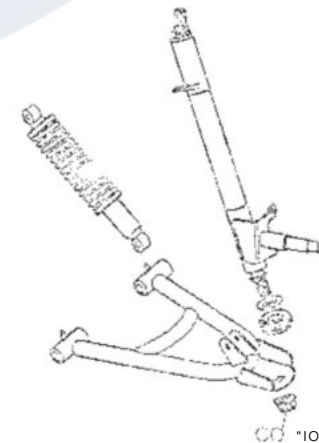
1. SECURE (1) BOLT M8X1.2^X55 , (2) CONTOUR WASHER, (1) LOCK NUT M8 TO POSITIONS #1,2,3,4,5,5
2. INSERT (6) BARCAP COVER TO POSITIONS #A,8,C,D,E,F
3. SECURE (1) BOLT MSX 1.25X55 (1) CONTOUR WASHER TO POSITIONS #7,8,9,10,11,12,13,14,15,16

BATTERY



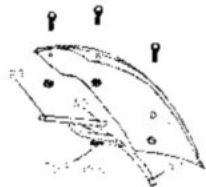
1. USE BATTERY STRAPS TO SECURE BATTERY TO TRAY

FRONT SUSPENSION COTTON PIN PLACEMENT



1. INSERT COTTON PIN INTO SLOT ON THE LOCKNUT BELOW THE LOWER SUSPENSION ARM
2. REPEAT THE SAME STEPS FOR THE OTHER SIDE

FRONT FENDER



1. SECURE (1) BOLT M8X1.25 (1) CONTOUR WASHER (1) LOCK NUT M8 TO POSITION #1,2
2. SECURE (1) BOLT M8X1.25 (1) CONTOUR WASHER (1) LOCK NUT M8 TO POSITION #3,4,5,5 TO THE METAL BRACKET
3. SECURE (1) BOLT M8X1.25 (1) CONTOUR WASHER (1) LOCK NUT M8 TO POSITION #6

REAR FENDER



1. SECURE (1) BOLT M8X1.25 (1) CONTOUR WASHER (1) LOCK NUT M8 TO POSITION #1,2
2. SECURE (1) BOLT M8X1.25 (1) CONTOUR WASHER (1) LOCK NUT M8 TO POSITION #3,4,5,5 TO THE METAL BRACKET
3. SECURE (1) BOLT M8X1.25 (1) CONTOUR WASHER (1) LOCK NUT M8 TO POSITION #6