

Ersatzteilebuch

Kinderbuggy 80ccm (Zweisitzer) JS80IIR-Q

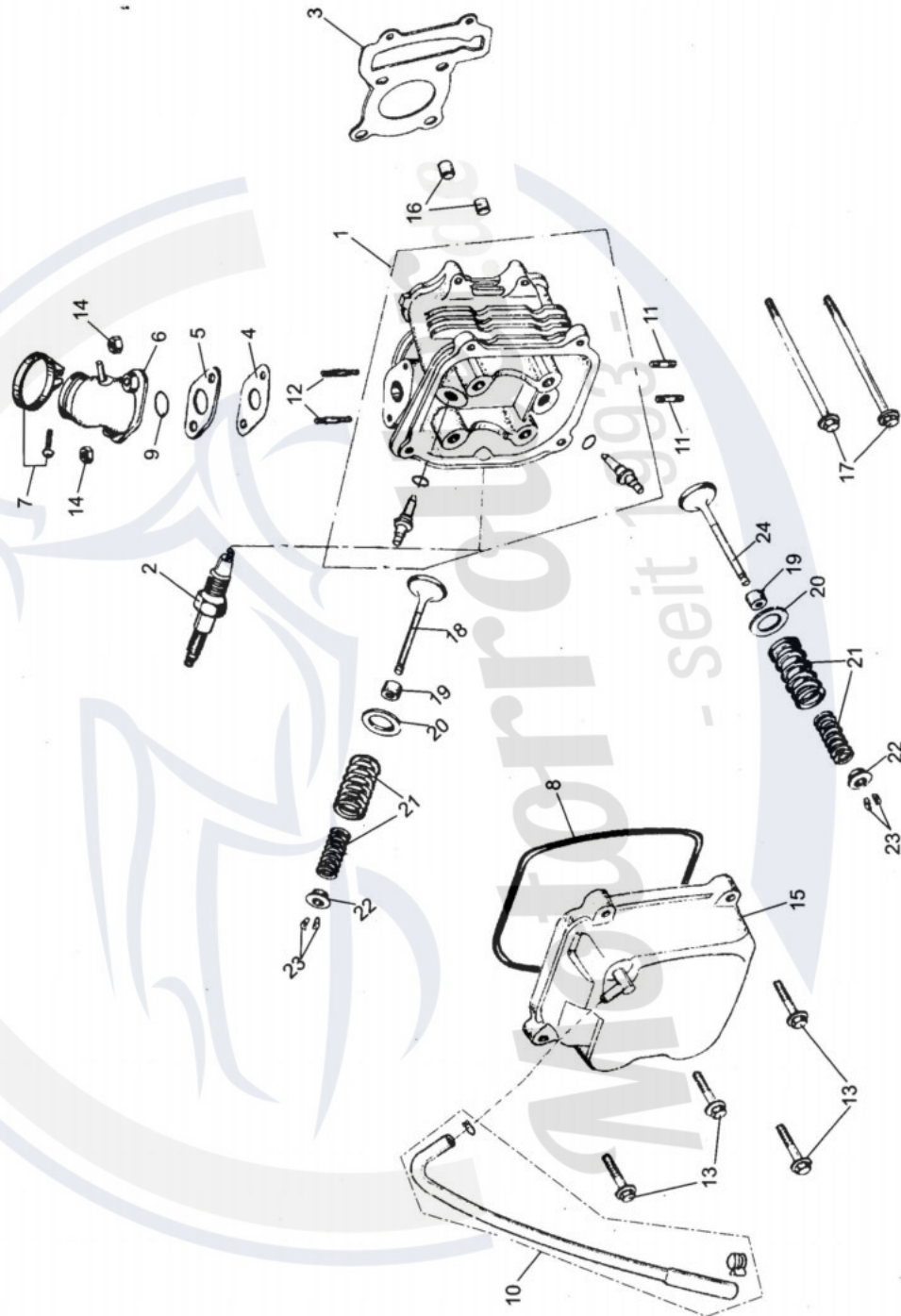


Motorroller.de
- seit 1993 -

Friedrich Epple GmbH
Im Erlengrund 1
64678 Lindenfels, OT
Eulsbach
Tel.: 06255 30030
E-Mail: info@motorroller.de
Web: www.motorroller.de

FIG.1

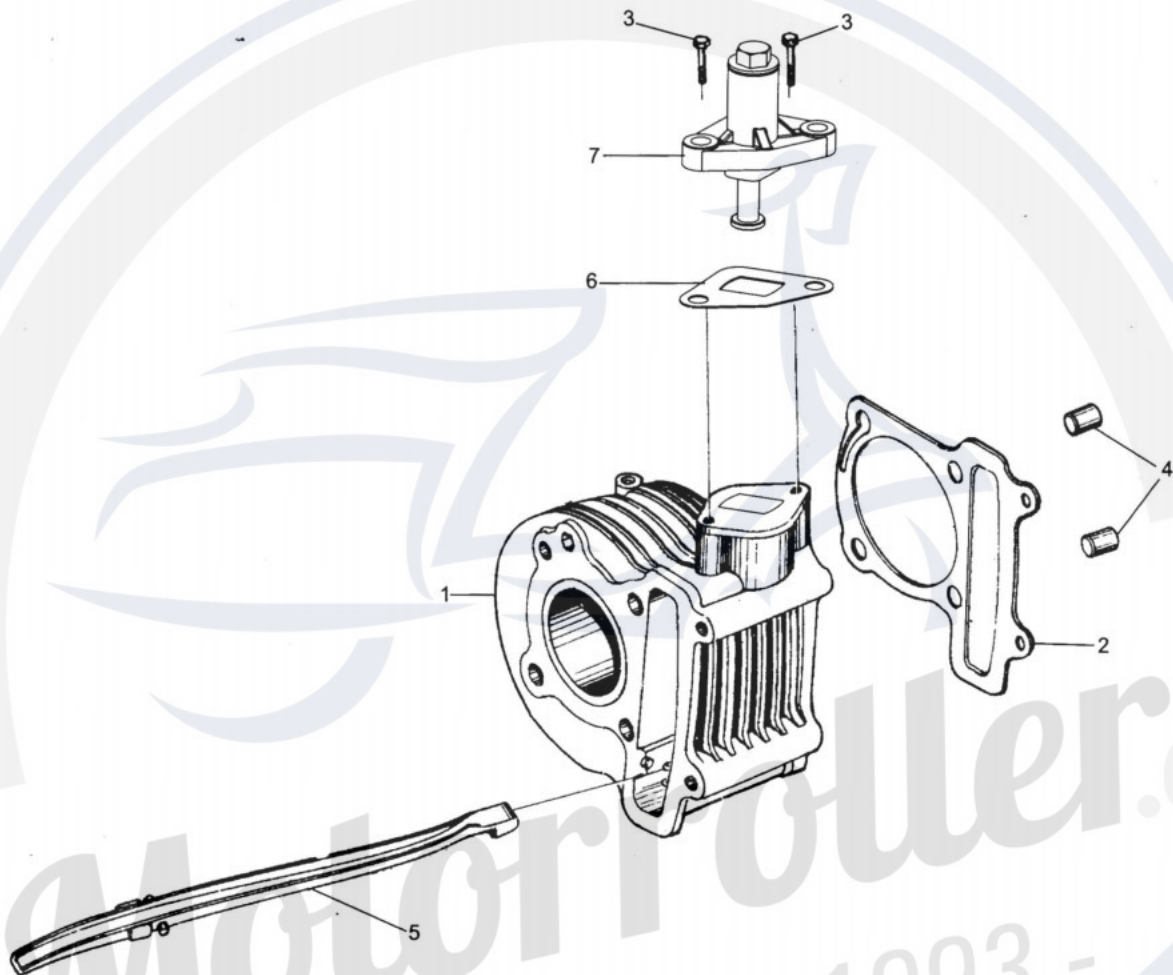
CYLINDER HEAD ASSY.



CYLINDER HEAD ASSY.

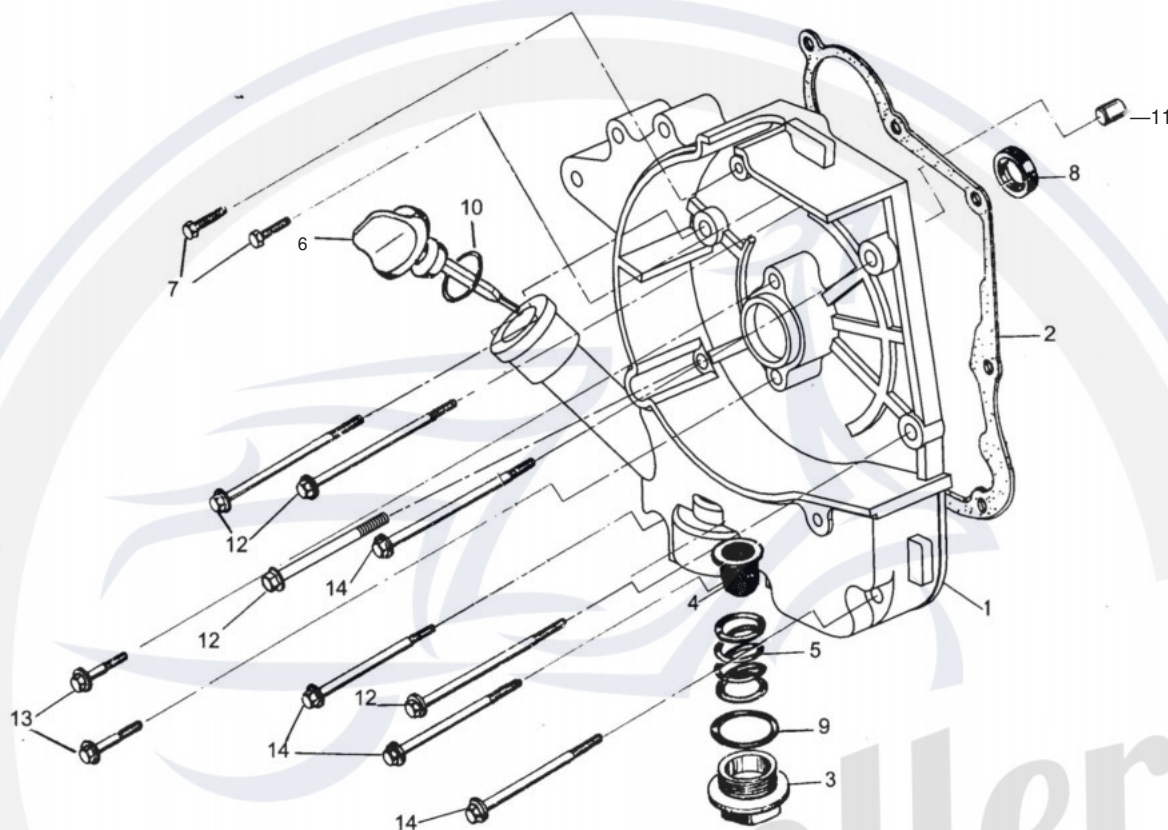
REF NO.	PART NO.	DESCRIPTION	REGD NO.	
1	M80-101001	CYLINDER HEAD SUBASSY	1	
2	M80-101002	SPARK PLUG (CRII7HSA)	1	
3	M80-101003	CYLINDER HEAD GASKET	1	
4	M80-101004	CARBURETOR INSULATOR GASKET	1	
5	M80-101005	CARBURETOR INSULATOR	1	
6	M80-101006	PIPE COMP. IN	1	
7	M80-101007	INSULATOR BAND	1	
8	M80-101008	HEAD COVER GASKET	1	
9	M80-101009	O-RING 27X2	1	
10	M80-101010	BREATHER TUBE	1	
11	M80-101011	STUD BOLT M6X18	2	
12	M80-101012	STUD BOLT M6X50	2	
13	M80-101013	FLANGE BOLT M6X25	4	
14	M80-101014	FLANGE NUT M6-ZN. D	2	
15	M80-101015	CYLINDER HEAD COVER COMP.	1	
16	M80-101016	DOWEL PIN 8X14	2	
17	M80-101017	CYLINDER HEAD BOLT FLANGE M6X85	2	
18	M80-101018	IN VALVE	1	
19	M80-101019	VALVE STEM SEAL	2	
20	M80-101020	VALVE SPRING OUTER SEAT	2	
21	M80-101021	VALVE OUTER, INNER SPRING	2	
22	M80-101022	VALVE SPRING RETAINER	2	
23	M80-101023	VALVE COTTER	4	
24	M80-101024	EX. VALVE	1	

CYLINDER ASSY.



CYLINDER ASSY.				
REF NO.	PART NO.	DESCRIPTION	REGD NO.	
1	M80-102001	CYLINDER COMP.	1	
2	M80-102002	CYLINDER GASKET	1	
3	M80-102003	FLANGE BOLT 6X20	2	
4	M80-102004	DOWEL PIN 8X14	2	
5	M80-102005	CAM CHAIN GUIDE COMP.	1	
6	M80-102006	GASKET TENSIONER LIFTER	1	
7	M80-102007	TENSIONER LIFTER ASSY	1	

CRANKCASE ASSY. (1)

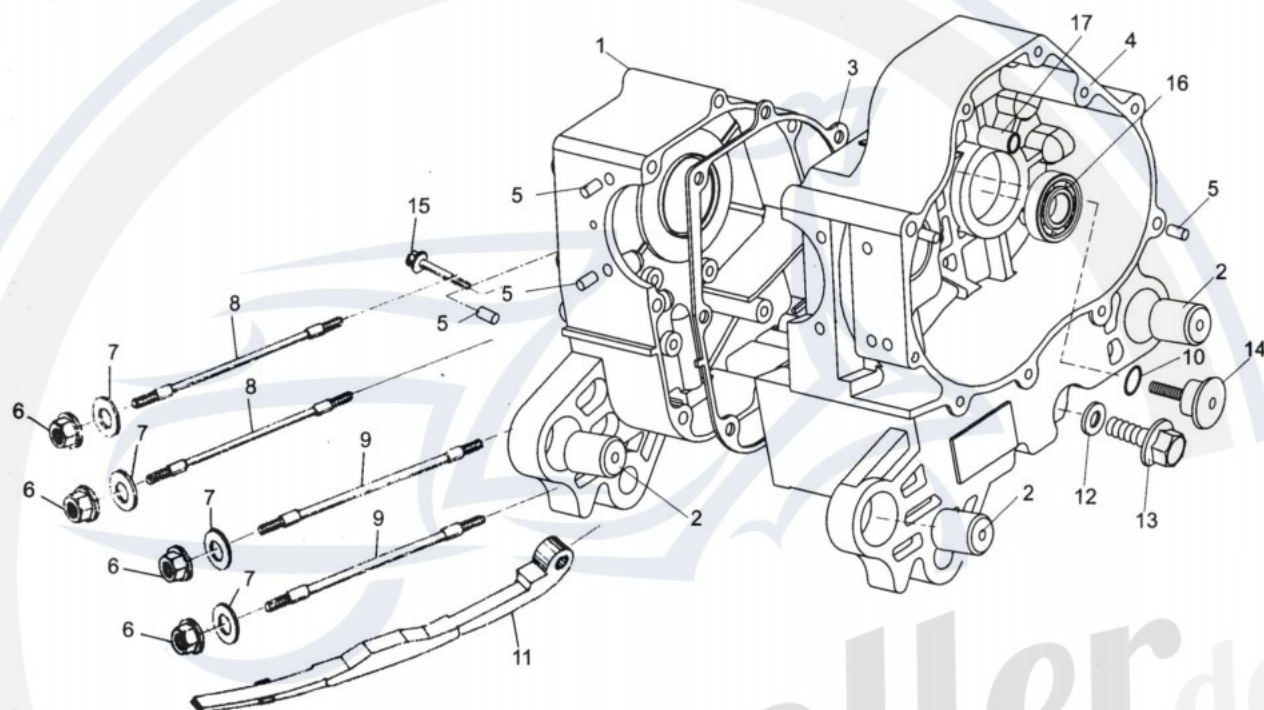


CRANKCASE ASSY.(1)

REF NO.	PART NO.	DESCRIPTION	REGD NO.
1	M80-103001	R CRANKCASE COVER COMP.	1
2	M80-103002	CRANKCASE COVER GASKET	1
3	M80-103003	CAP TAPPET ADJUSTING HOLE	1
4	M80-103004	OIL FILTING SCREEN	1
5	M80-103005	OIL FILTING SCREEN SPRING	1
6	M80-103006	OIL LEVEL GAUGE	1
7	M80-103007	HEX BOLT M5X12-ZN.D	2
8	M80-103008	OIL SEAL 16.4X30X5	1
9	M80-103009	O-RING 30.8X3	1
10	M80-103010	O-RING 18X3	1
11	M80-103011	DOWEL PIN 8X14	2
12	M80-103012	FLANGE BOLT M6X85	4
13	M80-103013	FLANGE BOLT M6X22	2
14	M80-103014	FLANGE BOLT M6X100	4

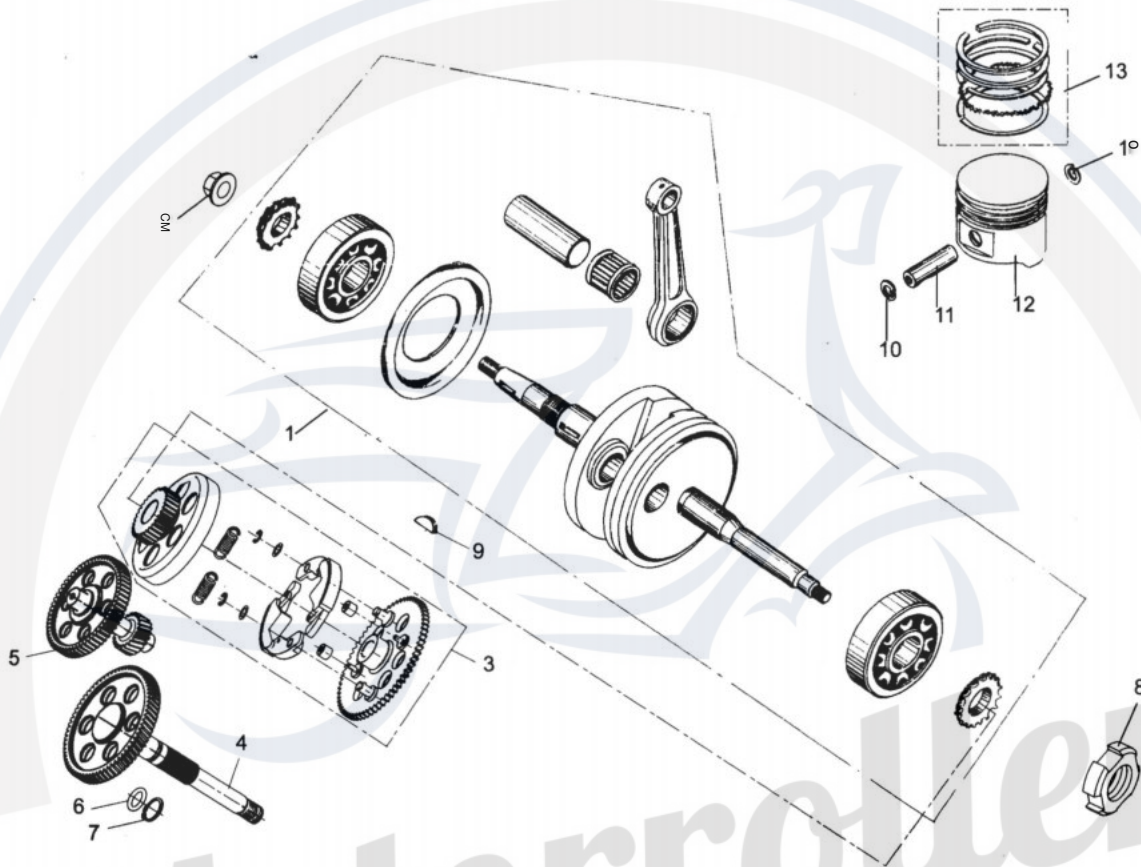
FIG.4

CRANKCASE ASSY. (2)



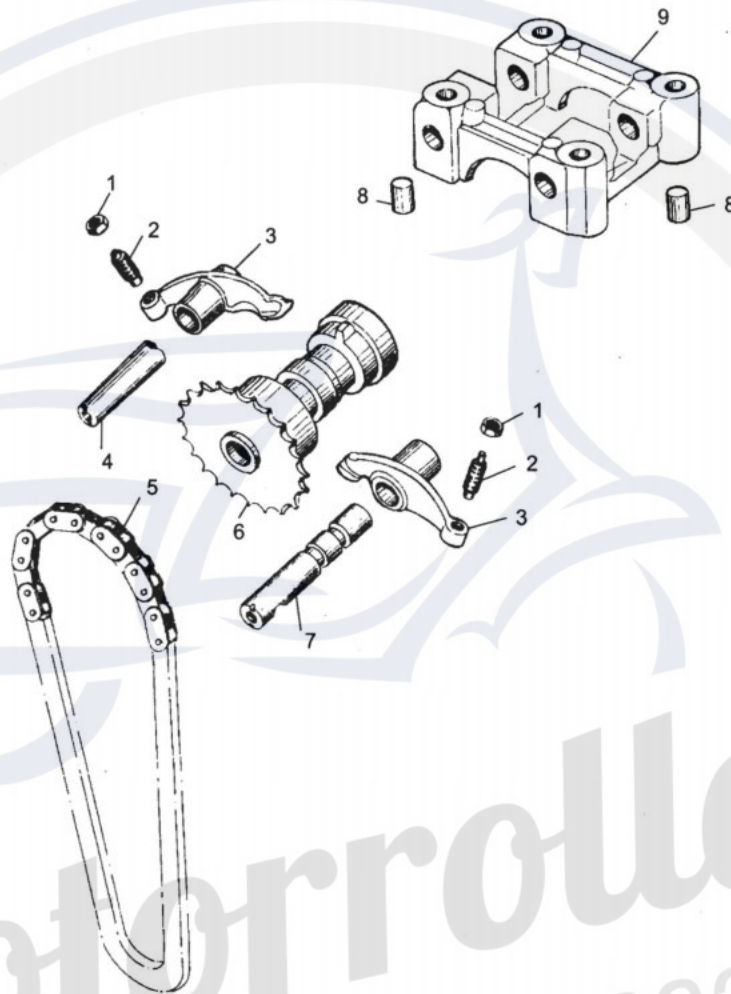
CRANKCASE ASSY.			
REF NO.	PART NO.	DESCRIPTION	REGD NO.
1	M80-104001	R. CRANKCASE ASSY.	1
2	M80-104002	ENGINE HANGER RUBBER BUSH	2
3	M80-104003	CRANKCASE GASKET	1
4	M80-104004	CRANKCASE ASSY. L	1
5	M80-104005	DOWEL PIN 8X14	6
6	M80-104006	FLANGE NUT M8	4
7	M80-104007	WASHER 08	4
8	M80-104008	STUD BOLT M8X167	2
9	M80-104009	STUD BOLT M8X175	2
10	M80-104010	OIL SEAL 15.2X12	1
11	M80-104011	CAM CHAIN TENSIONER	1
12	M80-104012	DRAIN PLUG WASHER 012	1
13	M80-104013	DRAIN PLUG BOLT M12	1
14	M80-104014	CAM CHAIN TENSIONER PIVOT	1
15	M80-104015	FLANGE BOLT M6X50	1
16	M80-104016	RADIAL BALL BEARING E6203	1
17	M80-104017		1

CRANKSHAFT CON'ROD & PISTON ASSY.



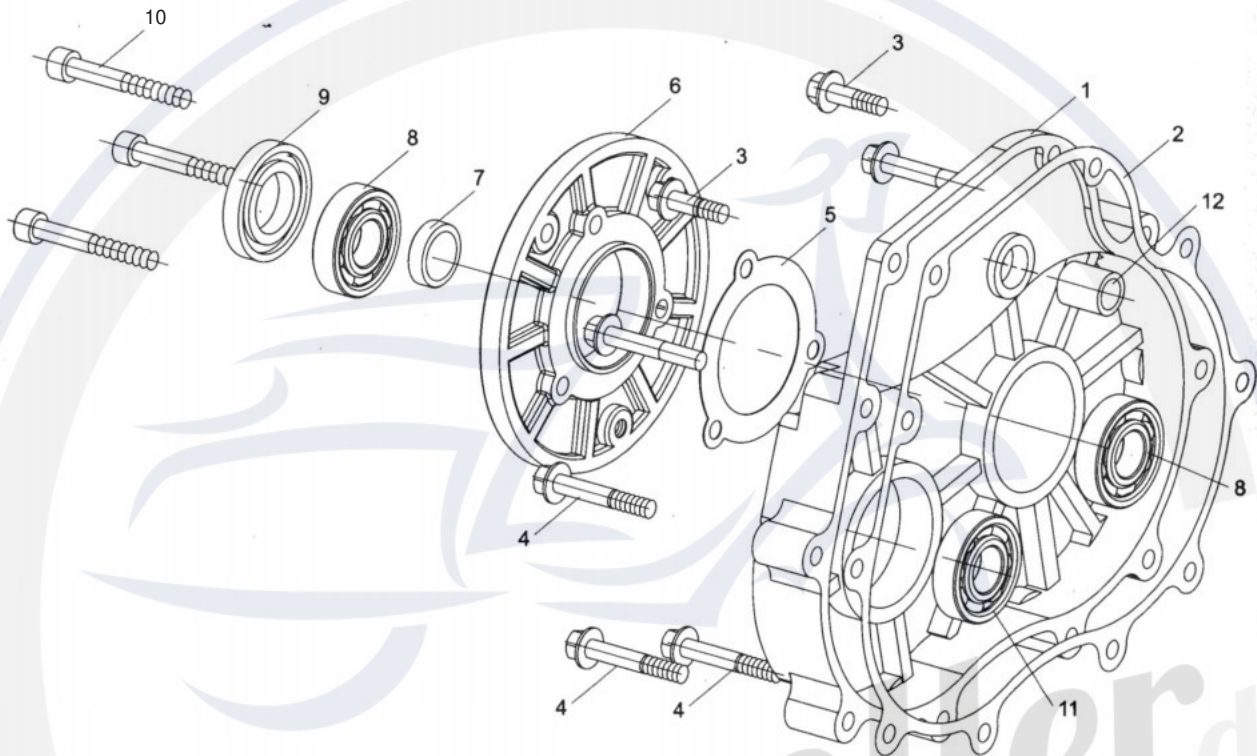
CRANKSHAFT CON'ROD & PISTON ASSY.

REF NO.	PART NO.	DESCRIPTION	REGD NO.
1	M80-105001	CRANKSHAFT & CONROD ASSY.	1
2	M80-105002	NUT M12X1.25	1
3	M80-105003	CLUTCH SUB ASSY.	1
4	M80-105004	OUTPUT SHAFT	1
5	M80-105005	MIDDLE SHAFT	1
6	M80-105006	O-RING	1
7	M80-105007	CIRCLIP	1
8	M80-105008	NUT M6	1
9	M80-105009	WOODRUFF KEY	2
10	M80-105010	PISTON PIN CLIP	2
11	M80-105011	PINTON PIN	1
12	M80-105012	PISTON	1
13	M80-105013	PISTON RING SET	1

CAMSHAFT ASSY.**CAMSHAFT ASSY.**

REF NO.	PART NO.	DESCRIPTION	REGD NO.
1	M80-106001	ADJUSTING TAPPET NUT	2
2	M80-106002	ADJUSTING TAPPET SCREW	2
3	M80-106003	ROCKER ARM VALVE	2
4	M80-106004	EX. ROCKER ARM SHAFT	1
5	M80-106005	CAMSHAFT CHAIN	1
6	M80-106007	CAMSHAFT COMP. 16T	1
7	M80-107007	IN ROCK ARM SHAFT COMP.	1
8	M80-107008	DOWEL PIN 8X14	2
9	M80-108009	CAMSHAFT HOLDER	1

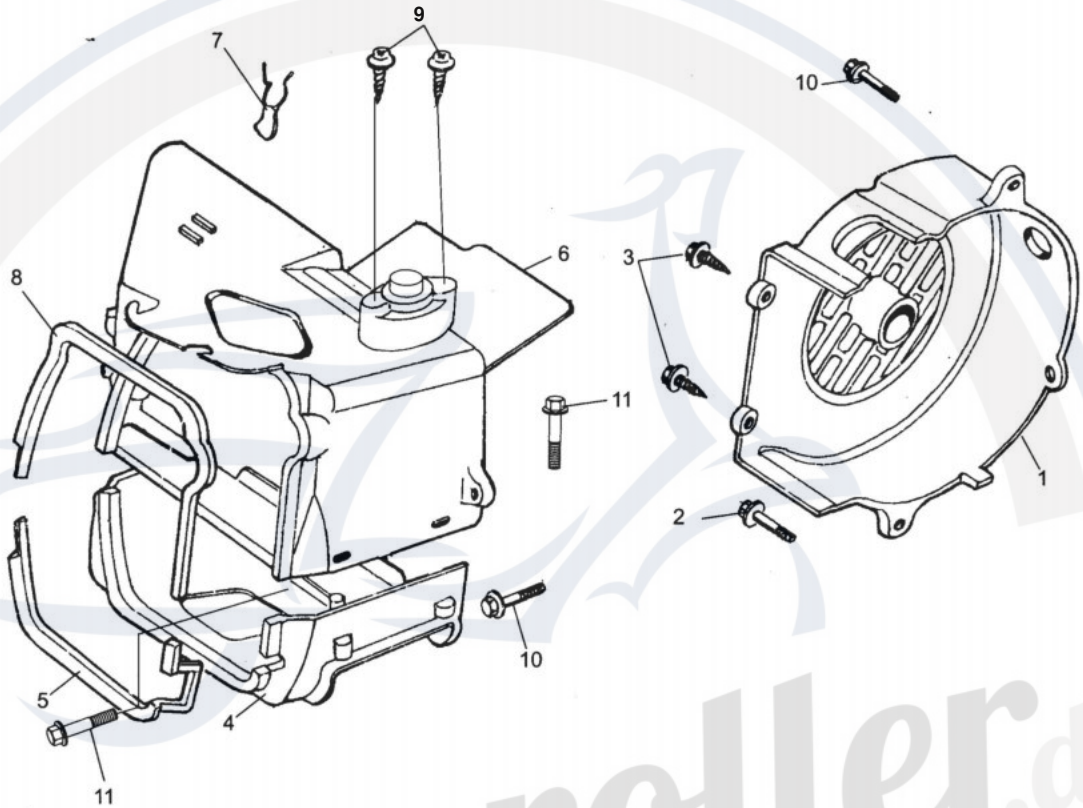
LEFT COVER ASSY.



LEFT COVER ASSY.

REF NO.	PART NO.	DESCRIPTION	REGD NO.
1	M80-107001	L. COVER	1
2	M80-107002	L COVER GASKET	1
3	M80-107003	BOLT M6X20	2
4	M80-107004	BOLT M6X35	8
5	M80-107005	COVER L PLATE	1
6	M80-107006	UNIDIRECTIONAL DISC.	1
7	M80-107007	BUSHING	1
8	M80-107008	BEARING 6004	2
9	M80-107009	DUST SEAT	1
10	M80-107010	ALLEN HEAD BOLT	3
11	M80-107011	BEARING 6203	1
12	M80-107012	BUSHING	1

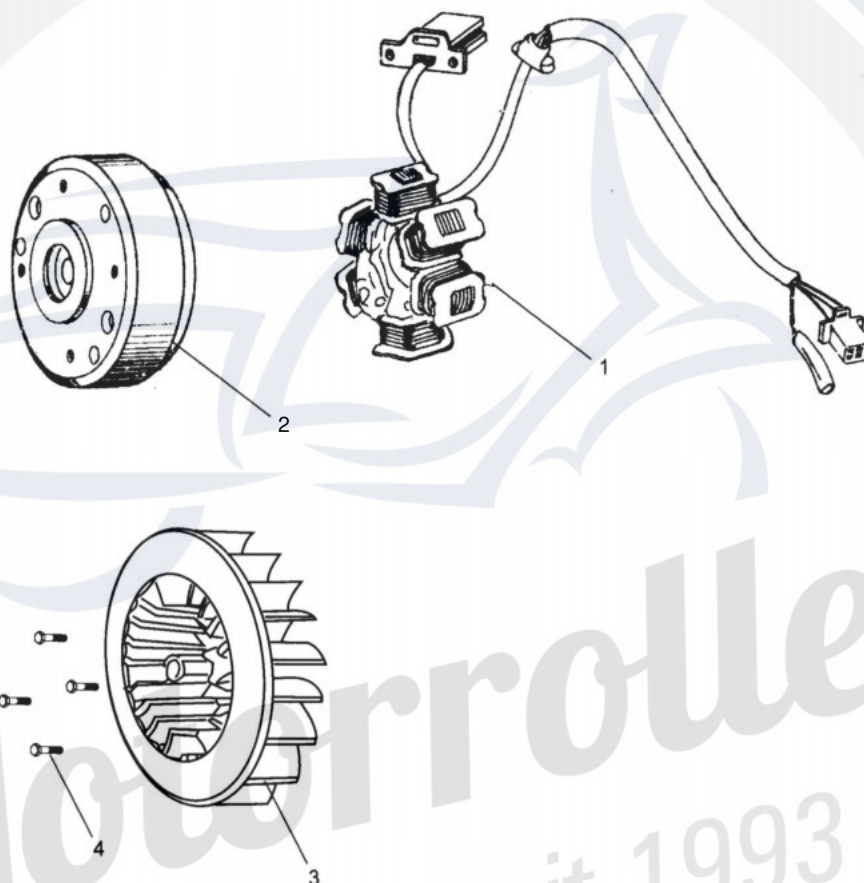
FAN COVER AND SHROUD ASSY.



FAN COVER AND SHROUD ASSY.

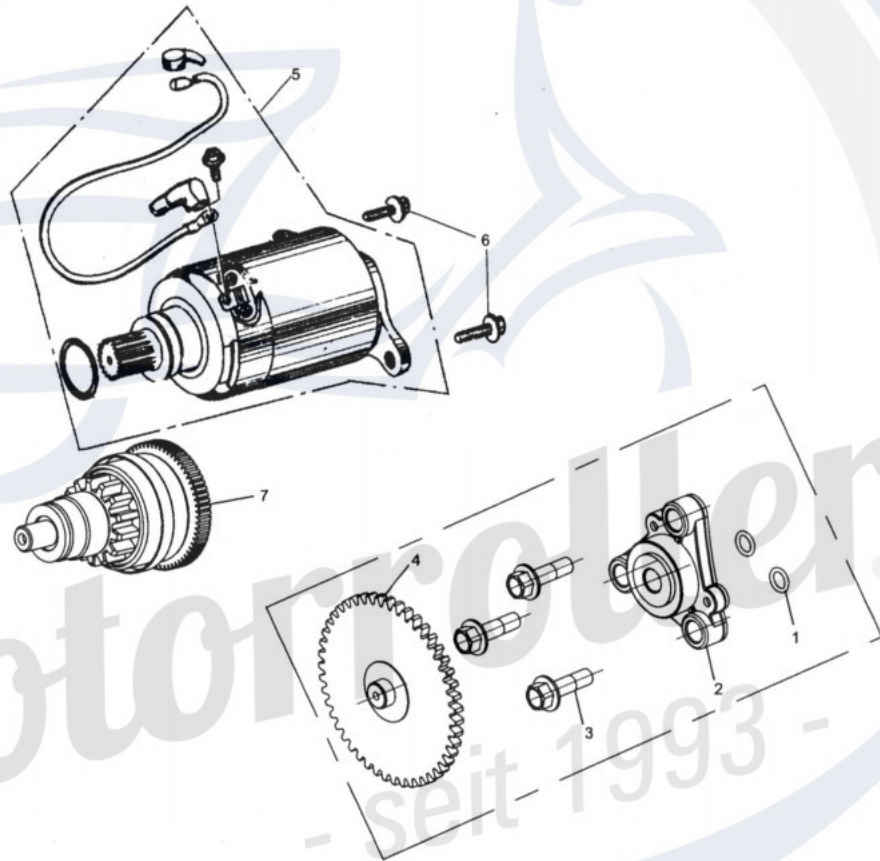
REF NO.	PART NO.	DESCRIPTION	REGD NO.
1	M80-108001	FAN COVER COMR	1
2	M80-108002	BOLT M6X16	3
3	M80-108003	SCREW ST4.8X16	2
4	M80-108004	LOWER SHROUD	1
5	M80-108005	LOWER SHROUD SEAL	1
6	M80-108006	UPPER SHROUD COMP.	1
7	M80-108007	HIGH TENSION CORD CLIP	1
8	M80-108008	UPPER SHROUD SEAL	1
9	M80-108009	SCREW ST4.8X16-F	2
10	M80-108010	BOLT M6X25	3
11	M80-108011	BOLT M6X16	2

ELECTRIC SYSTEM



ELECTRIC SYSTEM				
REF NO.	PART NO.	DESCRIPTION	REGD NO.	
1	M80-109001	STATOR COMP.	1	
2	M80-109002	FLYWHEEL COMP.	1	
3	M80-109003	COOLING FAN COMP	1	
4	M80-109004	FLANGE BOLT M6x18	4	

ELECTRIC STARTER ASSY.

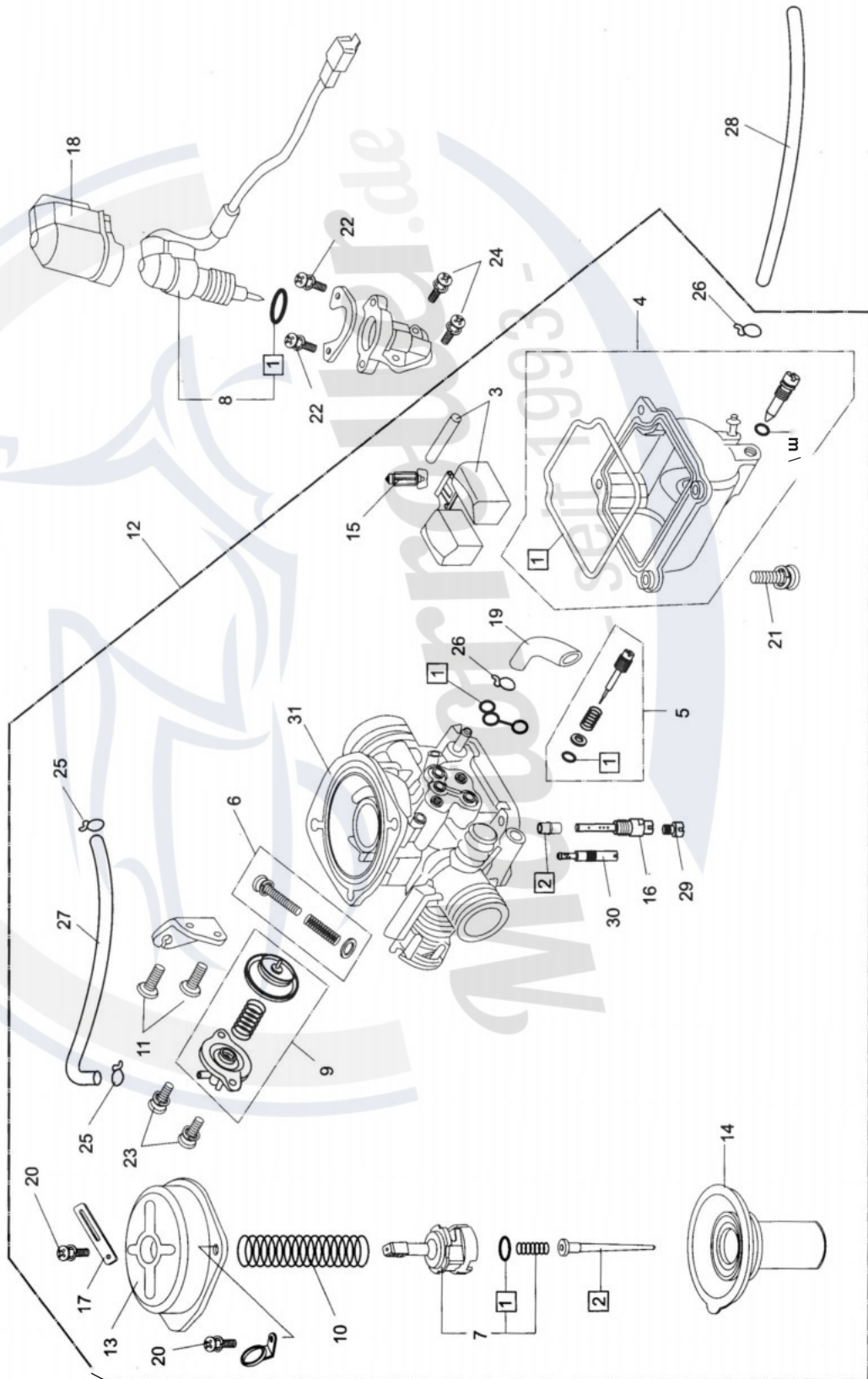


ELECTRIC STARTER ASSY.

REF NO.	PART NO.	DESCRIPTION	REGD NO.	
1	M80-110001	O-RING 9X1.5	2	
2	M80-110002	OIL PUMP	1	
3	M80-110003	BOLT 6X20	3	
4	M80-110004	OIL PUMP GEAR	1	
5	M80-110005	STARTER MOTOR ASSY.	1	
6	M80-110006	FLANGE BOLT M6X16	2	
7	M80-110007	START CUP	1	

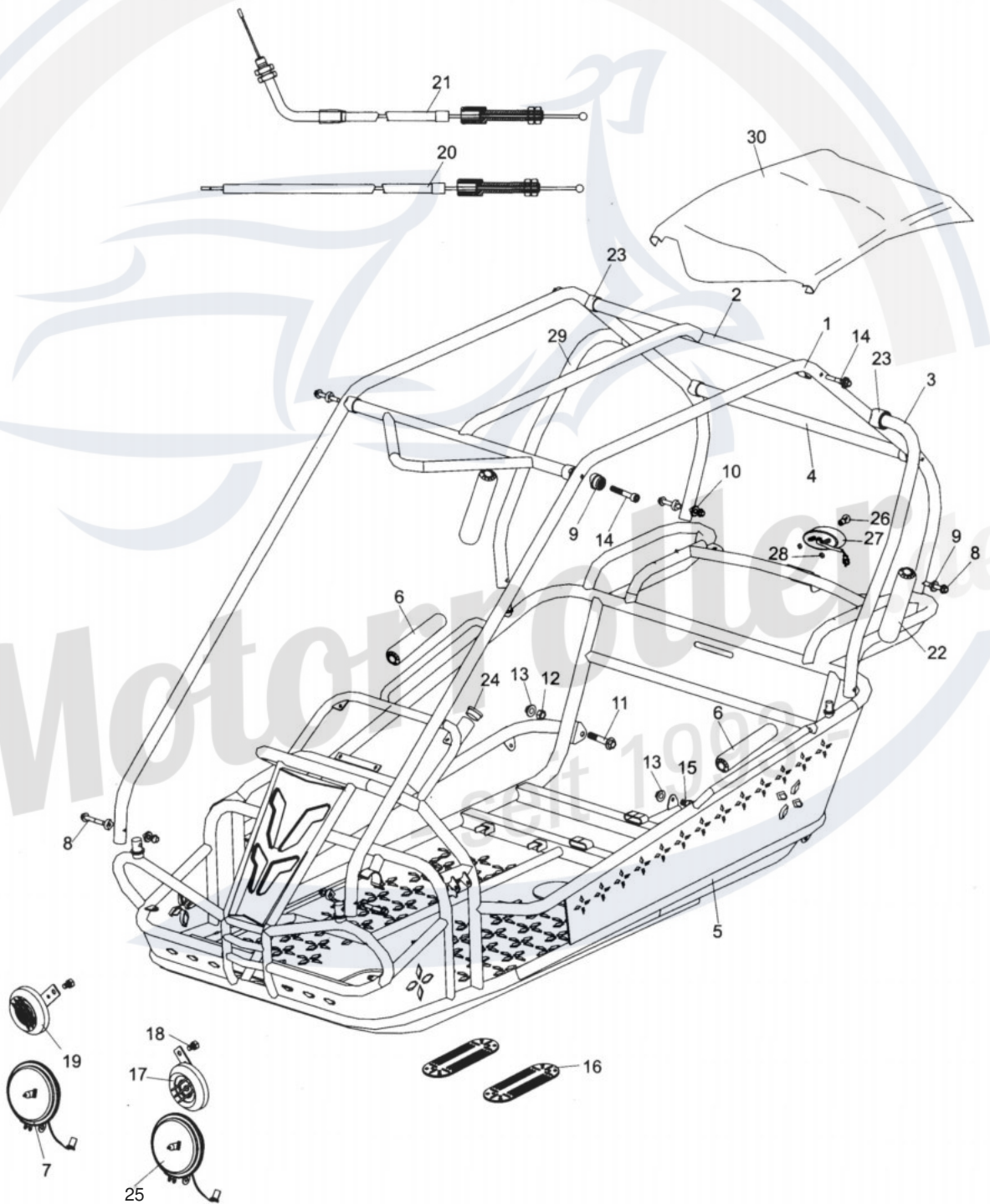
FIG.11

CARBURETOR



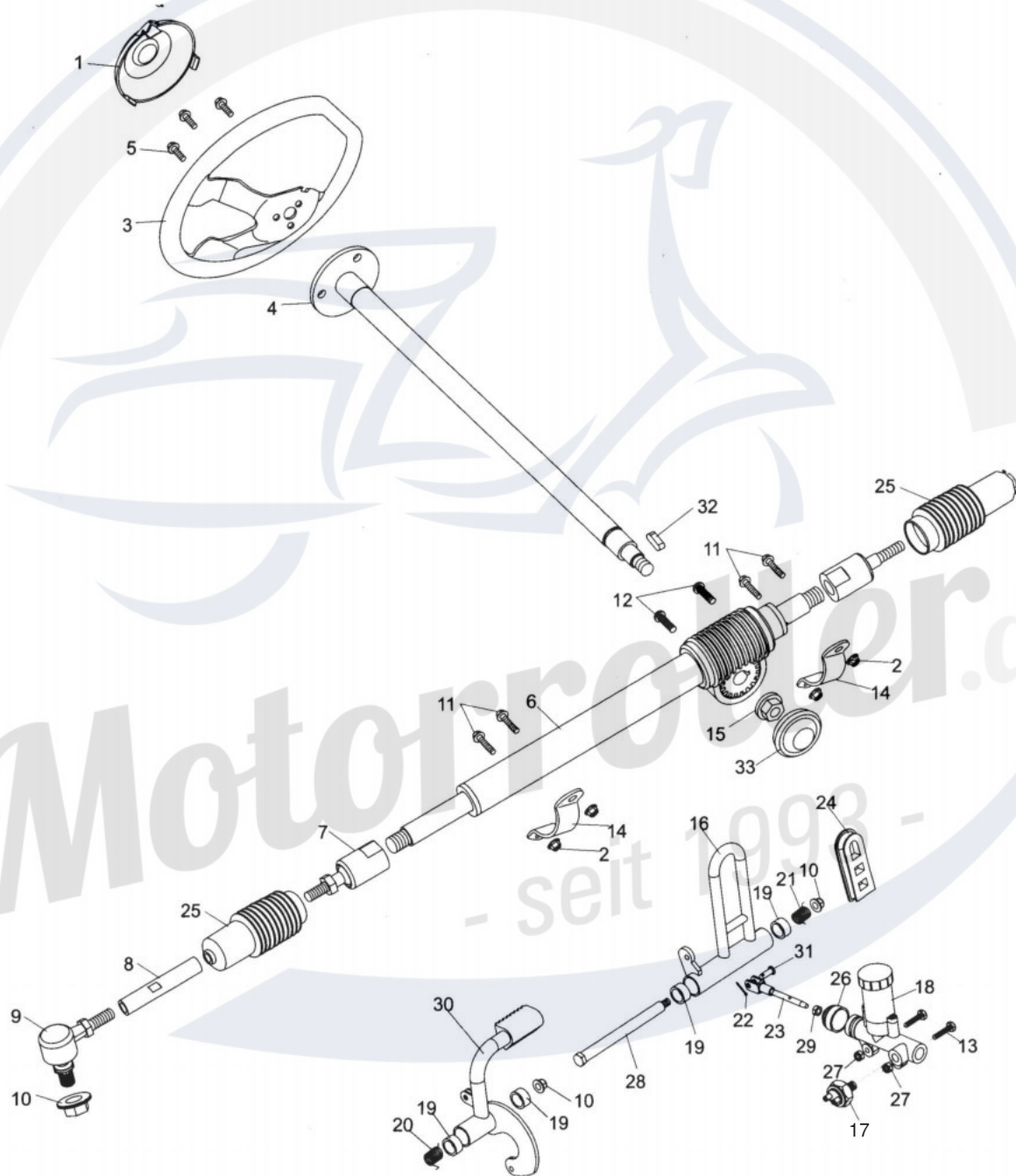
CARBURETOR				
REF NO.	PART NO.	DESCRIPTION	REGD NO.	
1	M80-111001	GASKET SET A	1	
2	M80-111002	JET NEEDLE SET	1	
3	M80-111003	FLOAT SET	1	
4	M80-111004	FLOAT CHAMBER SET	1	
5	M80-111005	SCREW SET A	1	
6	M80-111006	SCREW SET B	1	
7	M80-111007	VALVE PLATE SET	1	
8	M80-111008	AUTO BYSTARTER ASSY.	1	
9	M80-111009	AIR CUT VALVE SET	1	
10	M80-111010	COMPRESSION COIL SPRING	1	
11	M80-111011	PAN SCREW M5x12	1	
12	M80-111012	CARBURETOR ASSY	2	
13	M80-111013	TOP	1	
14	M80-111014	VACUUM PISTON COMP.	1	
15	M80-111015	FLOAT VALVE COMP.	1	
16	M80-111016	NEEDLE JET HOLDER	1	
17	M80-111017	BINDER	1	
18	M80-111018	HOLDER CAP.	1	
19	M80-111019	TUBE	1	
20	M80-111020	PAN SCREW M4x8	1	
21	M80-111021	PAN SCREW M4x14	2	
22	M80-111022	SCREW-WASHER M4x8	4	
23	M80-111023	SCREW-WASHER M4x10	2	
24	M80-111024	SCREW-WASHER M5x12	2	
25	M80-111025	TUBE CLIP (B7)	2	
26	M80-111026	TUBE CLIP (B8)	2	
27	M80-111027	TUBE 3.5x210	2	
28	M80-111028	TUBE	1	
29	M80-111029	MAIN JET 112#	1	
30	M80-111030	SLOW JET 35#	1	
31	M80-111031	CARBURETOR BODY	1	

FRAME GROUP



FRAME GROUP				
REF NO.	PART NO.	DESCRIPTION	REGD NO.	
1	8.0707054	C.B.C. BAR CAGE. (R.S.B)	2	
2	6.000.300	C.B.C. CUSTOM CROSS BAR TOP, FR. (R.S.B)	1	
3	8.070.055	C.B.C. CUSTOM J-BAR, L SIDE(R.S.B)	1	
4	8.080.048	C.B.C. CUSTOM CROSS BAR, RR. (R.S.B)	1	
5	2.000.054	FRAME COMP. (R.S.B)	1	
6	6.000.189	FOAM PADDING - 22	2	
7	6.000.301	HEADLIGHT, L	4	
8	9.129.840	ALLEN HEAD BOLT M8 x 1.25 x 40	6	
9	7.010.049	BAR CAGE WASHER, CAP M8	14	
10	7.010.050	BAR CAGE NUT, CAP M8	6	
11	9.110.050	FLANGE BOLT M10 x 1.25 x 50	2	
12	9.200.010	NUT, M10	2	
13	9.220.010	LOCKING FLANGE NUT, M10	3	
14	9.129.850	ALLEN HEAD NUT M8 x 1.25 x 50	8	
15	9.110.016	FLANGE BOLT M10x 1.25x16	1	
16	7.020.045	RUBBER FOOT PLATE	2	
17	6.000.174	HORN, H	1	
18	9.108.010	FLANGE BOLT M10x 1.25x10	2	
19	6.000.175	HORN, L	1	
20	6.000.317	THROTTLE CABLE COMP.	1	
21	6.000.318	BRAKE CABLE COMP.	1	
22	6.000.319	FOAM PADDING - 30	2	
23	7.010.045	BAR CAGE CAP	8	
24	7.010.006	STEERING SHAFT BUSH	1	
25	6.000.302	HEADLIGHT, R	1	
26	9.090.005	TAIL LIGHT BULB 21W/5W 12V	1	
27	6.000.144	TAIL LIGHT	1	
28	9.210.006	LOCK NYLON NUT M6	2	
29	8.070.056	C.B.C. CUSTOM J-BAR, R SIDE(R.S.B.)	1	
30	6.000.320	BIKINI TOP	1	

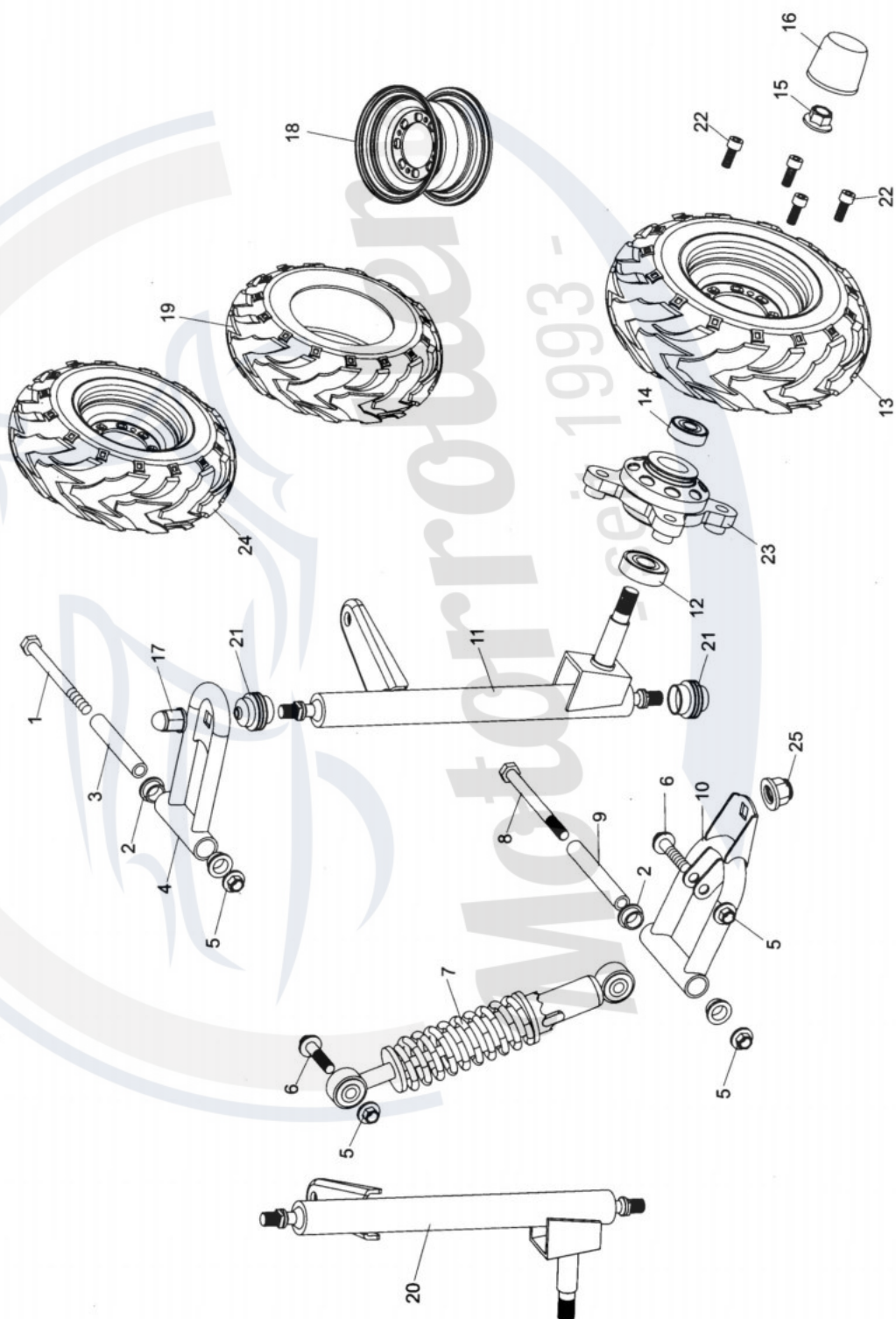
STEERING SHAFT ASSY.



STEERING SHAFT ASSY.

REF NO.	PART NO.	DESCRIPTION	REGD NO.
1	7.010.056	STEERING BOLT COVER	1
2	9.210.006	LOCKING NYLON NUT M6	4
3	7.020.057	STEERING WHEEL	1
4	2.000.056	STEERING SHAFT	1
5	9.100.616	BOLT M6 x 16	3
6	4.000.043	STEERING GEAR	1
7	6.000.180	STEERING BALL JOINT	2
8	8.010.135	TIE ROD	2
9	6.000.181	ROD END	2
10	9.210.008	LOCKING NYLON NUT M8	2
11	9.106.020	FLANGE BOLT, M6 x 20	4
12	9.100.512	BOLT M5 x 12	2
13	9.906.625	BOLT M6x25	2
14	8.020.130	STEERING GEAR BRACKET(R.S.B.)	2
15	9.220.012	LOCKING FLANGE NUT M12	1
16	4.000.044	BRAKE PEDAL COMP.	1
17	6.000.304	BRAKE LAMP SWITCH ASSY.	1
18	6.000.305	MASTER CYLINDER	1
19	7.010.003	PEDAL BUSH	4
20	8.040.011	BRAKE PEDAL RETURN SPRING, R	1
21	8.040.010	THROTTLE PEDAL RETURN SPRING, L	1
22	9.500.218	COTTER PIN	1
23	6.000.306	CYLINDER ROD	1
24	7.020.044	GREEN THROTTLE PEDAL PAD	1
25	7.020.059	STEERING BALL JOINT DUST COVER	2
26	7.020.076	DUST COVER	1
27	9.210.006	LOCKING NYLON NUT M6	2
28	9.708.145	BRAKE PEDAL BOLT	1
29	9.200.006	HEX NUT M6	1
30	6.000.307	THROTTLE PEDAL COMP.	1
31	6.000.308	LOCKING ROLL PIN	1
32	8.010.203	KEY	1
33	7.020.082	DUST COVER	1

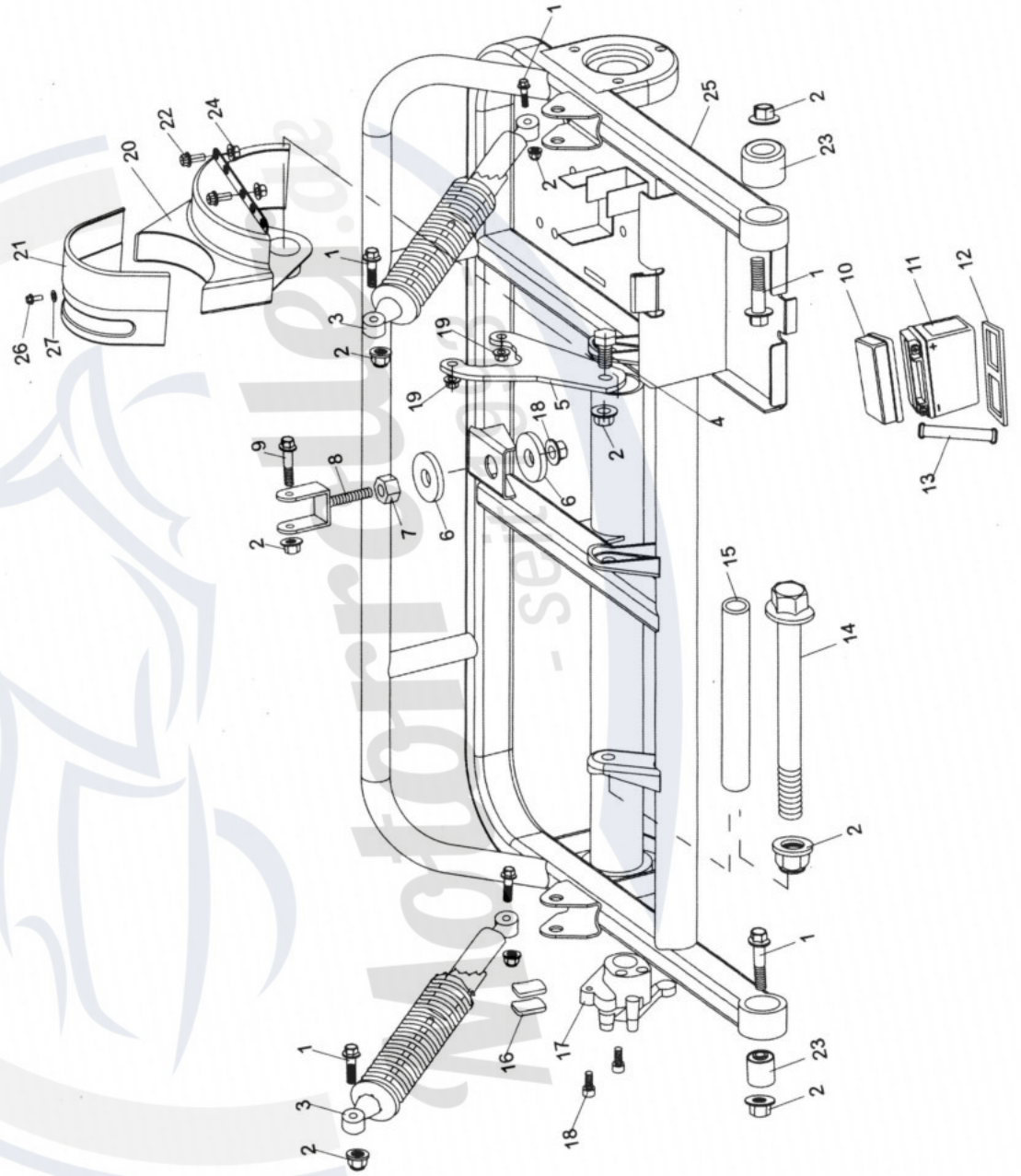
SUSPENSION ARM ASSY.



SUSPENSION ARM ASSY.

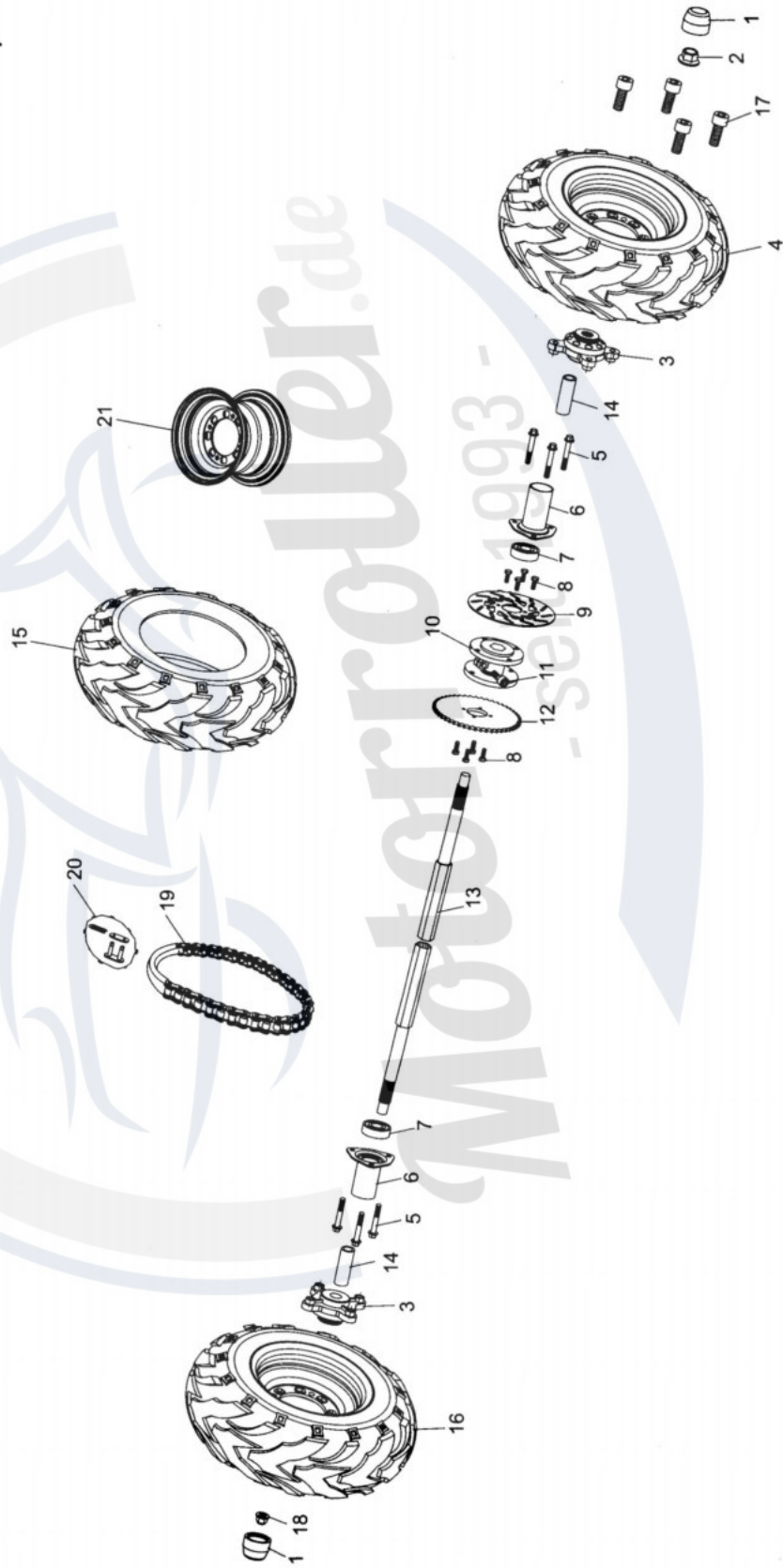
REF NO.	PART NO.	DESCRIPTION	REGD NO.
1	9.108.095	FLANGE BOLT M8 x 1.25 x 95	2
2	7.010.003	UPPER SUSPENSION ARM BUSH	8
3	8.010.104	UPPER SUSPENSION ARM COLLAR	2
4	4.000.047	UPPER SUSPENSION ARM	2
5	9.320.008	LOCKING FLANGE NYLON NUT. M8	8
6	9.108.030	FLANGE BOLT M8 x 1.25 x 30	4
7	6.000.172	CUSHION ASSY. FR	2
8	9.108.100	FLANGE BOLT M8 x 1.25 x 100	2
9	8.010.015	LOWER SUSPENSION ARM COLLAR	2
10	4.000.048	LOWER SUSPENSION ARM ASSY.	2
11	2.000.055	SPINDLE AND STRUT SUPPORT, R	1
12	9.030.010	BEARING 6202	2
13	6.000.309	FRONT WHEEL ASSY.(L)	1
14	9.030.009	BEARING 6201	2
15	9.220.012	LOCKING FLANGE NUT M12	2
16	7.020.039	HUB COVER, FR	2
17	8.010.141	ACORN NUT M10	2
18	6.000.310	RIM , FR	2
19	6.000.311	TIRE, FR 4.1-6	2
20	2.000.057	SPINDLE AND STRUT SUPPORT, L	1
21	7.020.079	BALL HEAD DUST SEAL	4
22	9.710.025	TIRE BOLT M10x25	8
23	8.010.194	HUB FR WHEEL	2
24	6.000.321	FRONT WHEEL ASSY.(R)	1
25	9.220.010	LOCKING NUTM10	2

FIG.15
REAR SWING ARM



REAR SWING ARM			
REF NO.	PART NO.	DESCRIPTION	REGD NO.
1	9.110.040	FLANGE BOLT M10X1.25	6
2	9.220.010	LOCKING NUT M10	8
3	6.000.322	CUSHION ASSY. RR	2
4	9.110.020	BOLT M10X20	1
5	8.010.195	REVERSE COMP. BRACKET	1
6	8.010.197	ENGINE MOUNT LINK WASHER	2
7	9.200.012	NUT M12	1
8	6.000.303	ENGINE MOUNT BOLT PLATE	1
9	9.110.070	BOLT M10X70	1
10	7.010.072	BATTERY COVET	1
11	6.000.323	BATTERY 12V6.5AH	1
12	7.020.080	LOWER BATTERY CUSHION	1
13	7.020.081	BATTERY STRAP	1
14	9.110.195	BOLT M10X195	1
15	8.010.196	REAR SUSPENSION ARM COLLAR	1
16	7.020.016	RR. BRAKE PAD SET	1
17	6.000.028	RR. CALIPER ASSY.	1
18	9.220.012	NUT M12	1
19	9.220.008	NUT M8	2
20	7.010.075	CHAIN GUARD	1
21	7.010.074	REVERSE ASSY. COVER	1
22	9.106.035	FLANGE BOLT M6x35	2
23	7.020.077	REAR SWING ARM BUSH	2
24	9.210.006	LOCKING NYLON NUT M6	2
25	4.000.045	REAR SWING ARM	1
26	9.104.020	BOLT M4X20	1
27	9.220.004	NUT M4	1

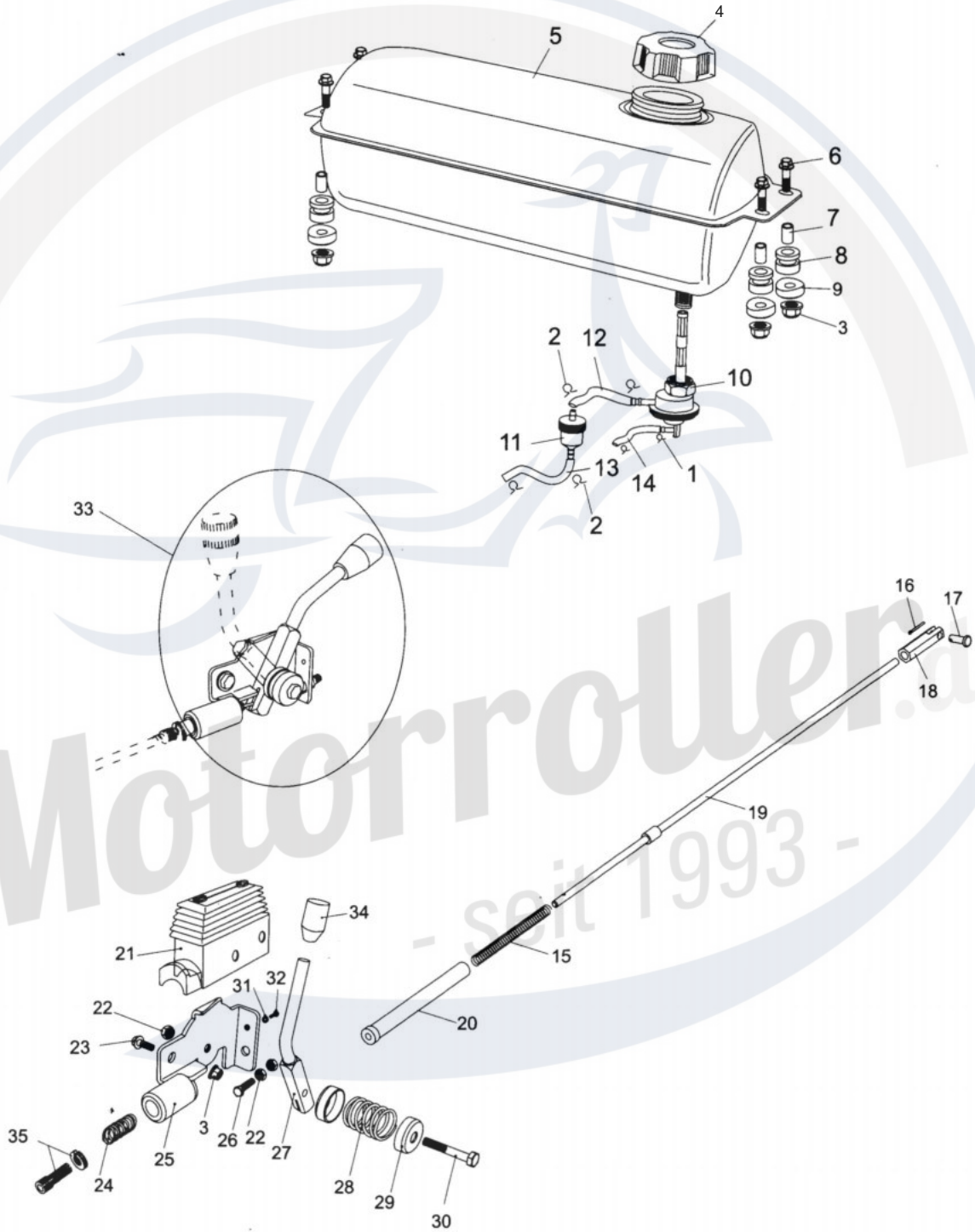
REAR HOUSING



REAR HOUSING

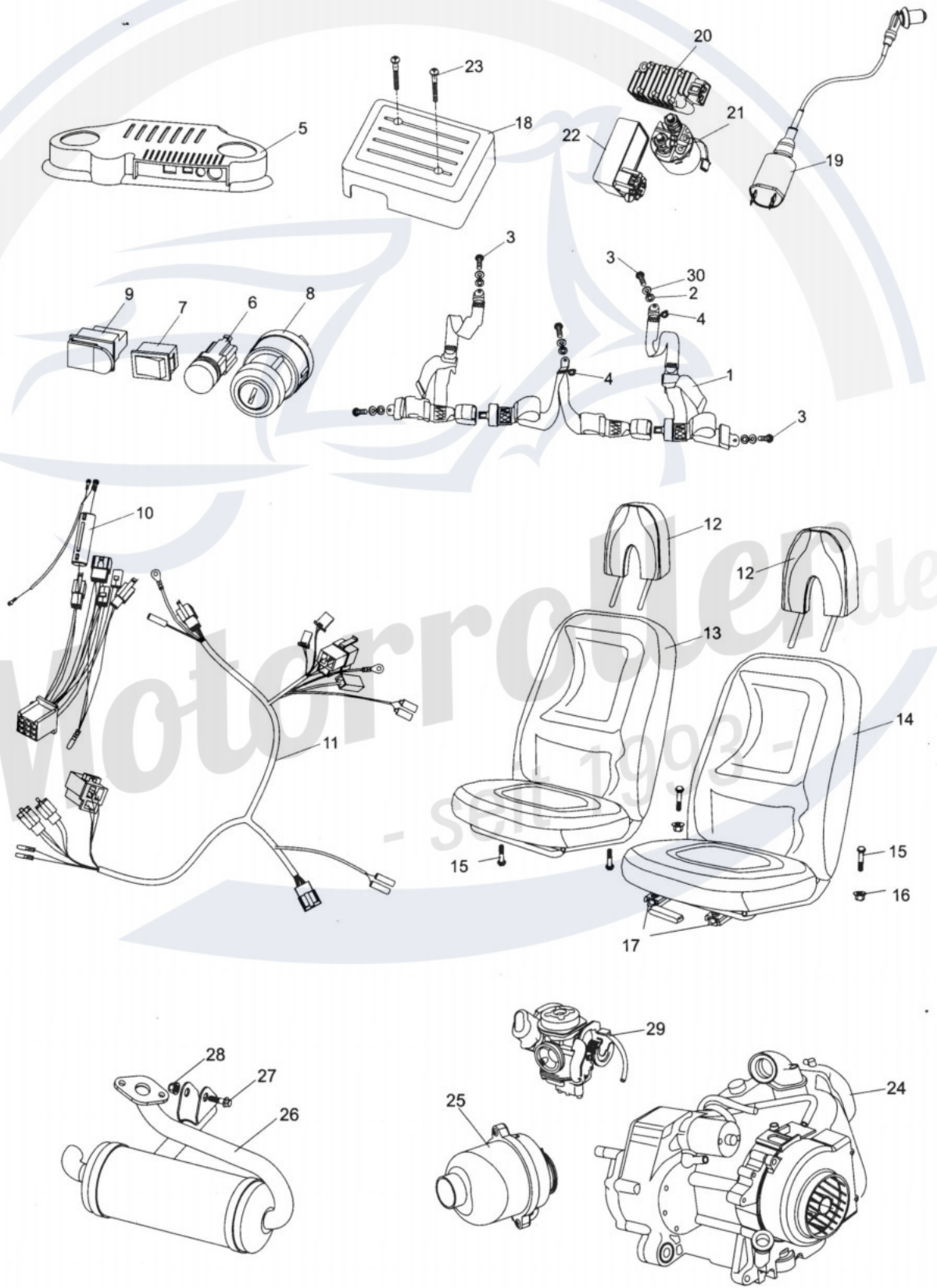
REF NO.	PART NO.	DESCRIPTION	REGD NO.
1	7.020.039	HUB COVER, RR	2
2	9.220.Ö16	LOCKING FLANGE NUT M16	1
3	8.010.198	REAR AXLE HLB	2
4	6.000.315	REAR WHEEL ASSY. R	1
5	9.108.016	FLANGE BOLT M8 x 1.25x16	6
6	6.000.196	AXLE COVER, R	2
7	9.030.002	BEARING, 6204	2
8	9.106.016	FLANGE BOLT M6 x 16	8
9	8.010.201	DISC BRAKE, RR	1
10	8.010.202	REAR AXLE HUB	1
11	9.129.810	ALLEN HEAD BOLT M8x 1.25x10	1
12	8.010.200	REAR SPROCKET	1
13	8.010.199	REAR AXLE	1
14	7.060.021	BUSHING	2
15	7.020.078	REAR TIRE	1
16	6.000.316	REAR WHEEL ASSY. L	1
17	7.060.023	ALLEN HEAD BOLT M 10x25	8
18	9.220.012	LOCKING FLANGE NUT M12	1
19	7.060.016	DRIVE CHAIN	1
20	6.000.324	MASTER LINK	1
21	6.000.333	RIM, RR	2

TANK AND REVERSE LEVER



TANK AND REVERSE LEVER			
REF NO.	PART NO.	DESCRIPTION	REGD NO.
1	8.040.008	VACUUM TUBE	2
2	8.040.009	FUEL TUBE CLIP	1
3	9.220.008	LOCKING FLANGE NUT. M8	5
4	6.000.145	FUEL TANK CAP COMP.	1
5	4.000.046	FUEL TANK COMP.(B.R.S)	1
6	9.108.025	BOLT-WASHER M8X1.25X25	4
7	8.010.034	TANK COMP. COLLR	4
8	7.020.005	RUBBER MOUNT	4
9	7.010.049	BAR CAGE CAP NUT M8	4
10	6.000.046	FUEL AUTO COCK ASSY.	1
11	6.000.056	GAS FILTER	1
12	7.020.030	FUEL #1 TUBE COMP.	1
13	7.020.029	FUEL #2 TUBE COMP.	1
14	7.020.031	VACUUM TUBE COMP.	1
15	7.060.017	SLEEVE SPRING	1
16	9.500.218	COTTER PIN M2x18	1
17	6.000.308	LOCKING ROLL PIN	1
18	7.060.020	CLEVIS JOINT	1
19	7.060.018	MAIN SLEEVE	1
20	7.060.019	SLEEVE SHAFT	1
21	7.020.024	REVERSE LEVER COVER	2
22	9.210.008	LOCKING NYLON NUT M8	6
23	9.108.020	BOLT-WASHER M8x1.25x20	2
24	8.040.004	CABLE SPRING	2
25	6.000.327	LEVER BRACKET	1
26	9.100.830	BOLT M8x30	1
27	6.000.326	LEVER, REVERSE, PARKING BRAKE	1
28	8.040.003	LEVER SPRING	1
29	8.020.082	LEVER SPACER	1
30	9.108.040	BOLT-WASHER M8x1.25x40	1
31	9.300.005	WASHER FLAT 05	1
32	9.600.512	PAN SCREW M5x12	1
33	6.000.325	REVERSE LEVER ASSY	1
34	7.020.026	LEVER. GREEN / BLACK COVEV	1
35	6.000.051	CABLE ROD ADJUSTING	1

WIRE HARNESS/ELECTRICAL/SEATS/ENGINE



WIRE HARNESS/ELECTRICAL/SEATS/ENGINE				
REF NO.	PART NO.	DESCRIPTION	REGD NO.	
1	6.000.328	SAFETY BELT	1	
2	9.700.002	BELT WASHER 012	5	
3	9.700.001	SPECIAL BOLT M7/16"X28	5	
4	9.7000.003	BELT NUT M7/16"	5	
5	7.010.076	SWITCH PANEL COVER	1	
6	6.000.164	ENGINE STOP BUTTON	1	
7	6.000.334	HEADLIGHT SWITCH	1	
8	6.000.165	POWER ON SWITCH	1	
9	6.000.299	HORN BUTTON	1	
10	6.000.312	SOCKET COMP.	1	
11	6.000.313	WIRE HARNESS	1	
12	6.000.329	HEAD-REST	2	
13	6.000.330	SEAT COMP. R	1	
14	6.000.331	SEAT COMP. L	1	
15	9.900.840	BOLT STRAP M8X1.25X40	2	
16	9.220.008	LOCKING FLANGE NUT M8	2	
17	6.000.057	SEAT RALL SET	1	
18	7.010.077	ELECTRIC ASSY. COVER	1	
19	6.000.332	IGNITION COIL COMP	1	
20	6.000.167	RECTIFIER COMP. REGULATE	1	
21	6.000.296	STARTING RELAY	1	
22	6.000.314	C.D.I UNIT COMP.	1	
23	9.600.655	PAN SCREW M6X55	2	
24	7.060.012	ENGINE COMP.	1	
25	7.060.015	AIR CLEANER ASSY.	1	
26	7.060.014	MUFFLER COMP.	1	
27	9.110.040	FLANGE BOLT M10X40	1	
28	9.220.010	LOCKING FLANGE NUT M10	1	
29	7.060.013	CARBURETOR	1	
30	7.060.022	LOCKING WASHER	5	

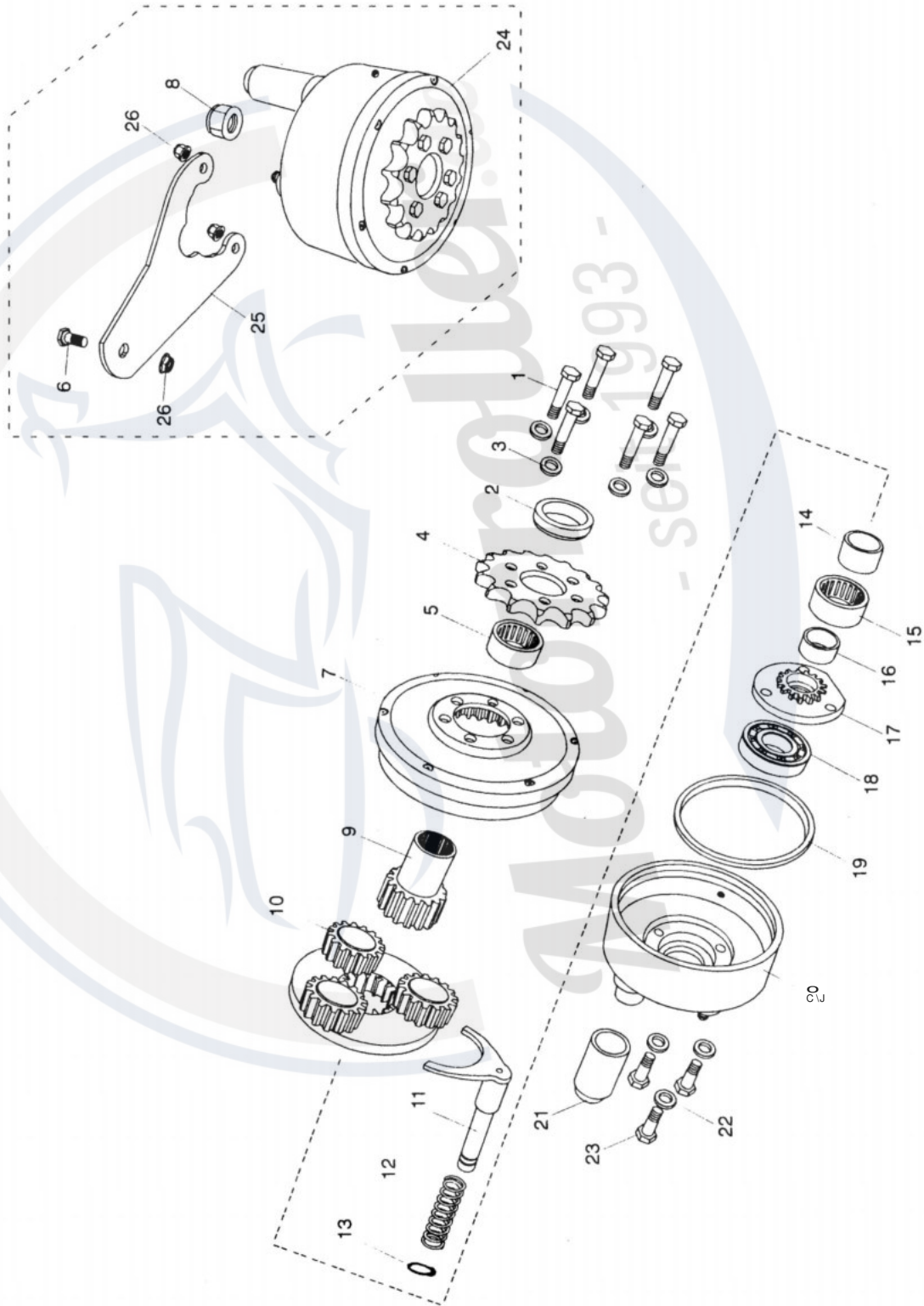
WARNING STICKERS



WARNING STICKERS			
REF NO.	PART NO.	DESCRIPTION	REGD NO.
OI 4^ GON)	9.090.014	LABEL SEAT BELT	.
	9.090.008	LABEL NO CLIMBING	.
	9.090.022	LABEL WARNING	.
	9.090.021	LABEL CHAIN GUARD	.
	9.090.021	LABEL WARNING	.

FIG.20

REVERSE ASSY.



REAR ASSY.				
REF NO.	PART NO.	DESCRIPTION	REGD NO.	
1	9.100.512	BOLT M5x12	6	
2	8.010.205	INTERNAL COLLAR	1	
3	9.030.017	WASHER 05	6	
4	8.010.206	DRIVE SPROCKET	1	
5	9.030.018	NEEDLE BEARING 25x32x16	1	
6	9.908.020	BOLT STRAP M8	1	
7	8.010.208	GEAR CASE. L	1	
8	9.220.016	LOCKING FLANGE NUTM16	1	
9	8.010.210	DRIVE GEAR	1	
10	6.000.335	COUNTER GEAR SHAFT COMP	1	*
11	8.010.211	GEAR SHIFT YOKE	1	
12	8.040.018	GEAR SHIFTING YOKE SPRING	1	
13	9.700.110	CIRCLIP O10	1	
14	8.010.215	DRIVE GEAR BUSHING	1	
15	9.030.015	NEEDLE BEARING 17x30x14	1	
16	8.010.213	BUSHING. DRIVE GEAR	1	
17	8.030.042	GEAR SEAT	1	
18	9.030.016	BEARING 60103 DDU	1	
19	7.020.083	RUBBER OIL SEAL	1	
20	8.030.043	GEAR CASE. R	1	
21	8.010.214	SHIFTING YOKE COVER	1	
22	9.300.008	WASHER 08	3	
23	9.100.812	SCREW PAN M8x12	3	
24	6.000.336	REVERSE ASSY.	1	
25	8.020.219	BRACKET REVERSE	1	
26	9.220.008	LICKING FLANGE NUT M8	3	