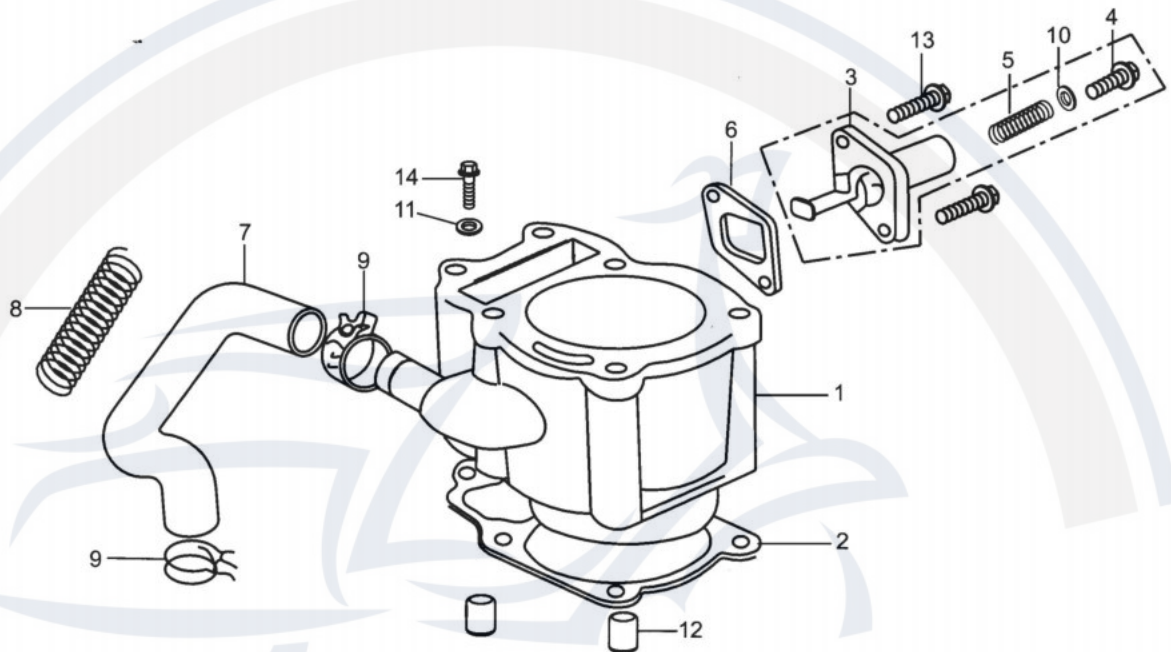


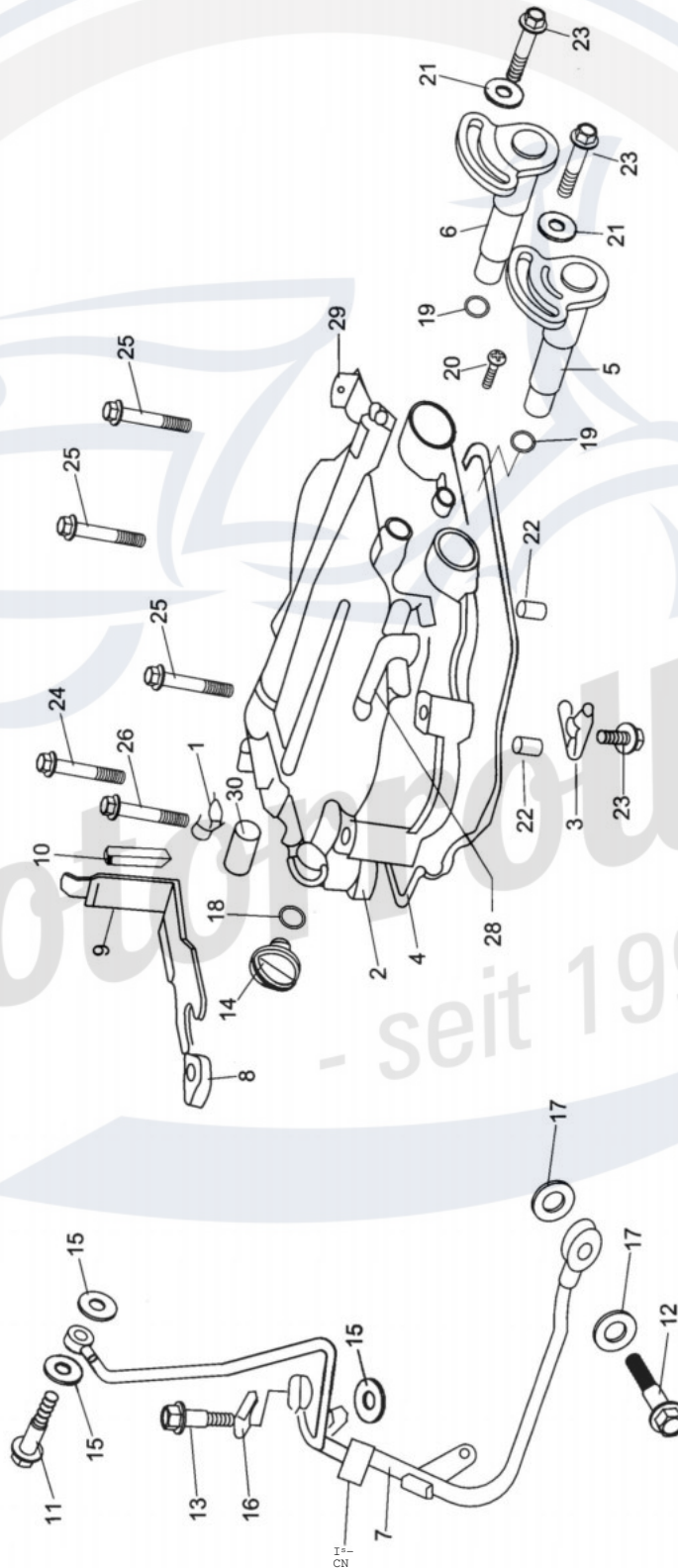
CYLINDER COMP.



CYLINDER COMP.			
REF NO.	PART NO.	DESCRIPTION	REGD NO.
1	172MM-023100	CYLINDER COMP	1
2	172MM-023002	CYLINDER SEAL	1
3	152MI-023300	TENSIONER	1
4	152MI-023003	SPRING SEAT FLANGE BOLT	1
5	152MI-023002	SPRING	1
6	152MI-023004	TENSIONER SEAL	1
7	172MM-023007	WATER INFLOW RUBBER TUBE	1
8	172MM-023009	WATER TUBE SHEATH	1
9	QC/T621-1999-B24	WIRE CLAMP	2
10	152MI-023009	WASHER 8.5	1
11	GB/T848-85-6-D	SMALL WASHER	1
12	152MI-021005	DOWEL PIN 10 X 14	2
13	152MI-023008	FLANGE BOLT M6X 18	2
14	152MI-080013	FLANGE BOLT M6 X 22	1

FIG.2

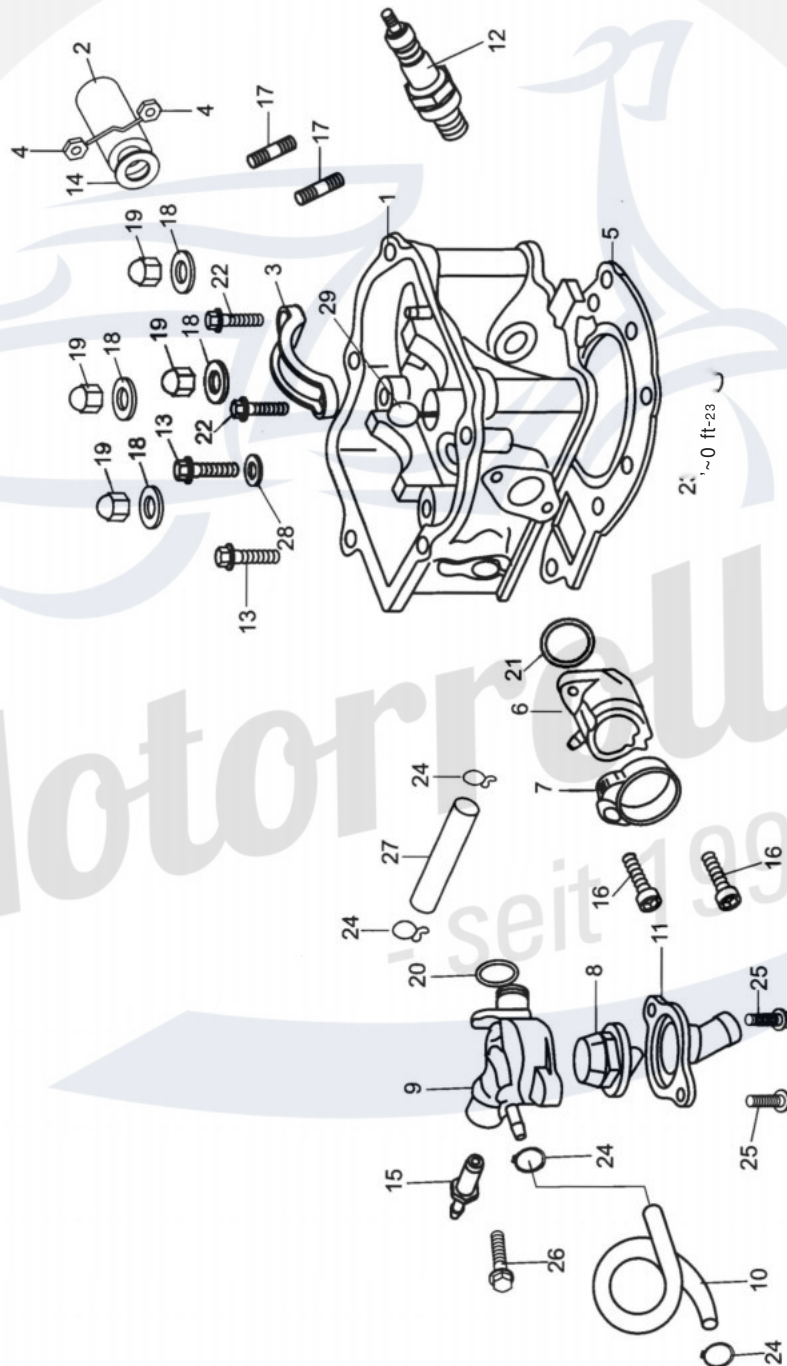
CYLINDER COVER ASSY.(1)



CYLINDER COVER ASSY.(1)				
REF NO.	PART NO.	DESCRIPTION	REGD NO.	
1	172 MM-021009	OIL TUBE CLIP	1	
2	172MM-021001	CYLINDER COVER	1	
3	172MM-021006	PLATE	1	
4	152MI-021011	CYLINDER COVER SEAL	1	
5	172MM-021100	INLET ROCKER SHAFT	1	
6	172 MM-021200	EX ROCKER SHAFT	1	
7	172MM-021400	OUTER OIL TUBE	1	
8	152MI-021001	RUBBER RING	1	
9	172MM-021431	OIL TUBE HOLDER	1	
10	152MI-021003	SHOCK ABSORPTION RUBBER BAR	1	
11	152MI-021004	BOLT M8 x 25	1	
12	152MI-021015	BOLT M12 x 1.25	1	
13	152MI-021013	BOLT M8 x 25	1	
14	152MI-021008	VISION HOLE CAP	1	
15	152MI-021016	WASHER 8	3	
16	152MI-021012	EAR WASHER	1	
17	152MI-021014	WASHER 12	2	
18	152MI-021009	VISION HOLE CAP SEAL	1	
19	152MI-021010	ROCKER SHAFT SEAL	2	
20	GB/T818-2000	CROSS FLANGE BOLT	1	
21	GB/T848-85-6	SMALL WASHER	2	
22	152MI-021005	DOWEL PIN 10 x 14	2	
23	152MI-021019	FLANGE BOLT M6 x 12	3	
24	152MI-021017	FLANGE BOLT M6 x 25	1	
25	152MI-013010	FALNGE BOLT M6 x 50	3	
26	152MI-021018	FLANGE BOLT M6 x 55	1	
27	172MM-021404	SHOCK ABSORPTION BUSH	1	
28	172MM-021002	AIR TUBE JOINT	1	
29	172MM-021300	AIR CLEANER HOLDER	1	
30	172MM-021008	STOPPLE	1	

FIG.3

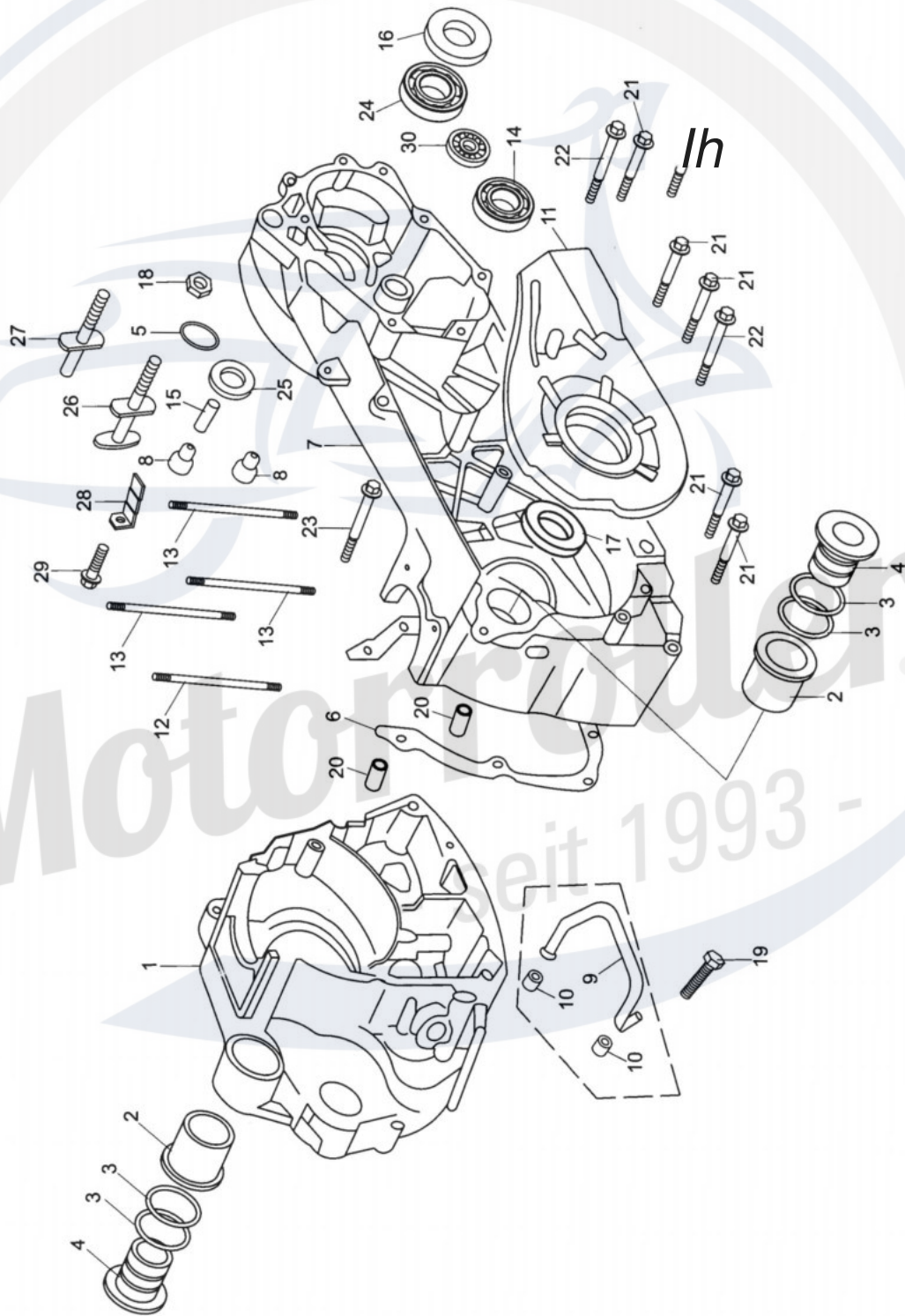
CYLINDER COVER ASSY.(2)



CYLINDER COVER ASSY.(2)				
REF NO.	PART NO.	DESCRIPTION	REGD NO.	
1	172MM-022100	CYLINDER COVER ASSY.	1	
2	172MM-022700	EX. TUBE FLANGE	1	
3	152MI-022014	CAMSHAFT COVER	1	
4	172MM-022008	EX. TUBE NUT	2	
5	172MM-022010	CYLINDER COVER SEAL	1	
6	172MM-022900	CARBURETOR RELAY SEAT	1	
7	172MM-022500	INLET TUBE CLAMP	1	
8	152MI-022810	TEMPERATURE RETAINER	1	
9	152MI-022803	UPPER TEMPERATURE RETAINER COVER	1	
10	152MI-022021	CARBURETOR COOLING RUBBER TUBE	1	
11	172MM-022601	UNDERSIDE TEMPERATURE RETAINER COVER	1	
12	172MM-022400	SPARK PLUG	1	
13	152MI-021017	FLANGE BOLT M6 x 25	2	
14	172MM-022800	EX. OUTLET SEAL	1	
15	152MI-022600	WATER TEMPERATURE SENSOR	1	
16	GB/T6191-1986	INNER HEX FLANGE BOLT M6 x 18	2	
17	172MM-022007	EX. TUBE FLANGE BOLT	2	
18	152MI-022012	WASHER 8	4	
19	152MI-022013	ACORN NUT M8	4	
20	152MI-022804	O-RING 14.8 x 1.9	1	
21	172MM-022009	O-RING 31 x 2	1	
22	152MI-022020	FLANGE BOLT M6 x 22	2	
23	152MI-021005	DOWEL PIN 10 x 14	2	
24	QC/T621-1999	WIRE CLIP	2	
25	152MI-090005	FLANGE BOLT M6 x 16	2	
26	152MI-023008	FLANGE BOLT M6x 18	1	
27	152MI-022017	CARBURETOR VENTILATION RUBBER TUBE	1	
28	GB/T848-85	SMALL WASHER	1	
29	152MI-022303	STOPPLE M12 x 1		

FIG.4

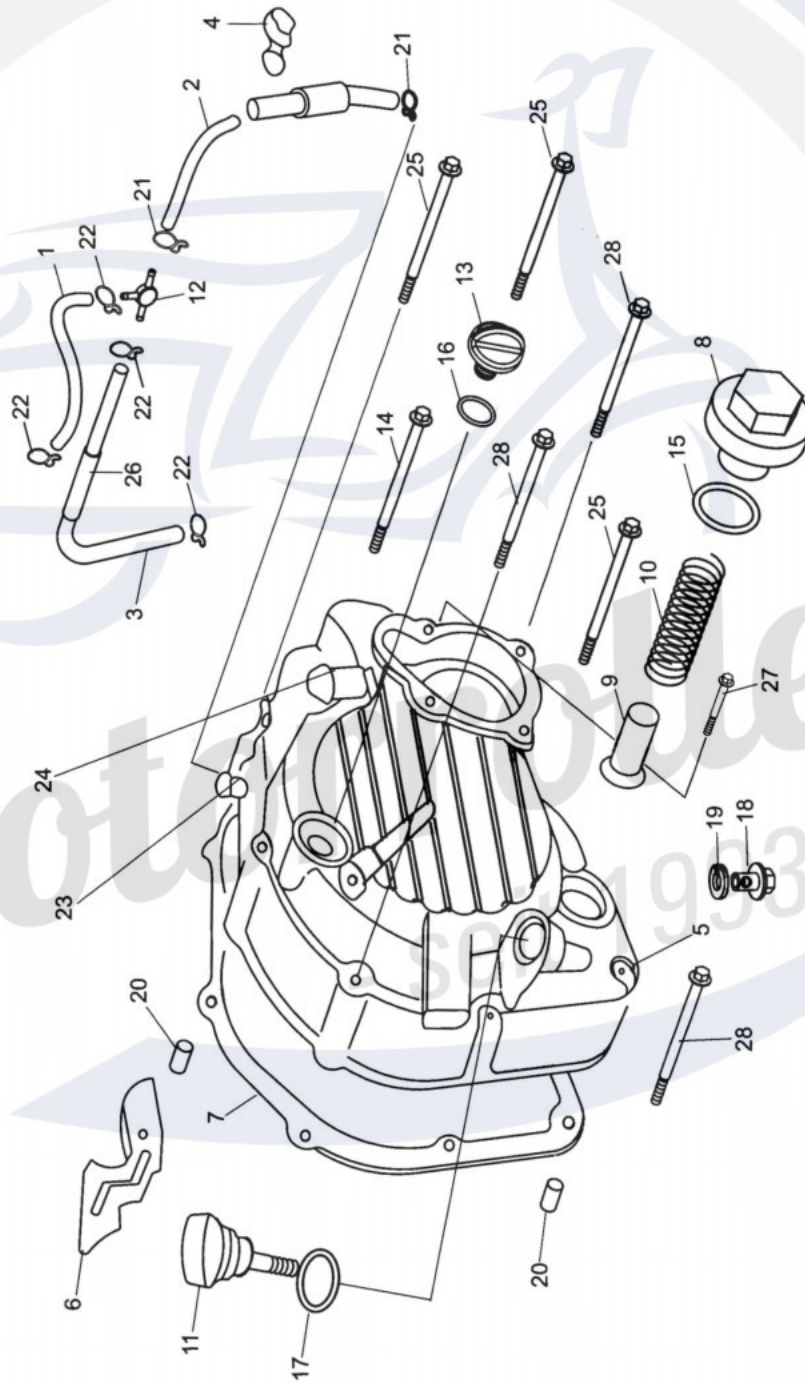
CRANKCASE ASSY.



CRANKCASE ASSY.				
REF NO.	PART NO.	DESCRIPTION	REGD NO.	
1	172MM-011200	CRANKCASE, R.	1	
2	152MI-011010	HANGER OUTER BUSH	2	
3	152MI-011008	O-RING 15.8 x 2.4	4	
4	152MI-011009	HANGER INNER BUSH	2	
5	152MI-011013	O-RING 7.5 x 1.5	1	
6	172MM-011003	CRANKCASE SEAL	1	
7	172MM-011100	CRANKCASE, L.	1	
8	172MM-011014	BRAKE SHOE SHOCK ABSORPTION WASHER	2	
9	172MM-011400	INNER OIL TUBE	1	
10	172MM-011002	INNER OIL TUBE SEAL	2	
11	172MM-011300	INSULATION GASKET	1	
12	172MM-011005	CYLINDER STUD BOLT B	1	
13	172MM-011004	CYLINDER STUD BOLT A	3	
14	NTN: TMB301	ROLL BEARING	1	
15	172MM-011007	BRAKE SHOE BUSH, DOWEL PIN	1	
16	172MM-011009	OIL SEAL 34 x 52 x 5	1	
17	172MM-011001	OIL SEAL 28 x 40 x 8	1	
18	152MI-011700	STOP NUT M8	1	
19	152MI-021019	FLANGE BOLT M6 x 12	1	
20	152MI-021005	DOWEL PIN 10 x 14	2	
21	152MI-011017	FLANGE BOLT M6 x 60	5	
22	152MI-011018	FLANGE BOLT M6 x 70	3	
23	152MI-011016	FLANGE BOLT M6 x 125	1	
24	NTN: 6205LLU	ROLL BEARING	1	
25	172MM-011008	OIL SEAL 14 x 20 x 3.5	1	
26	172MM-011010	BRAKE SHOE DOWEL PIN	1	
27	172MM-011006	REAR SWING AXLE	1	
28	172MM-011011	BRAKE CABLE PLATE	1	
29	152MI-090005	FLANGE BOLT M6 x 16	1	
30	NTN: HMK1416	NEEDLE BEARING	1	

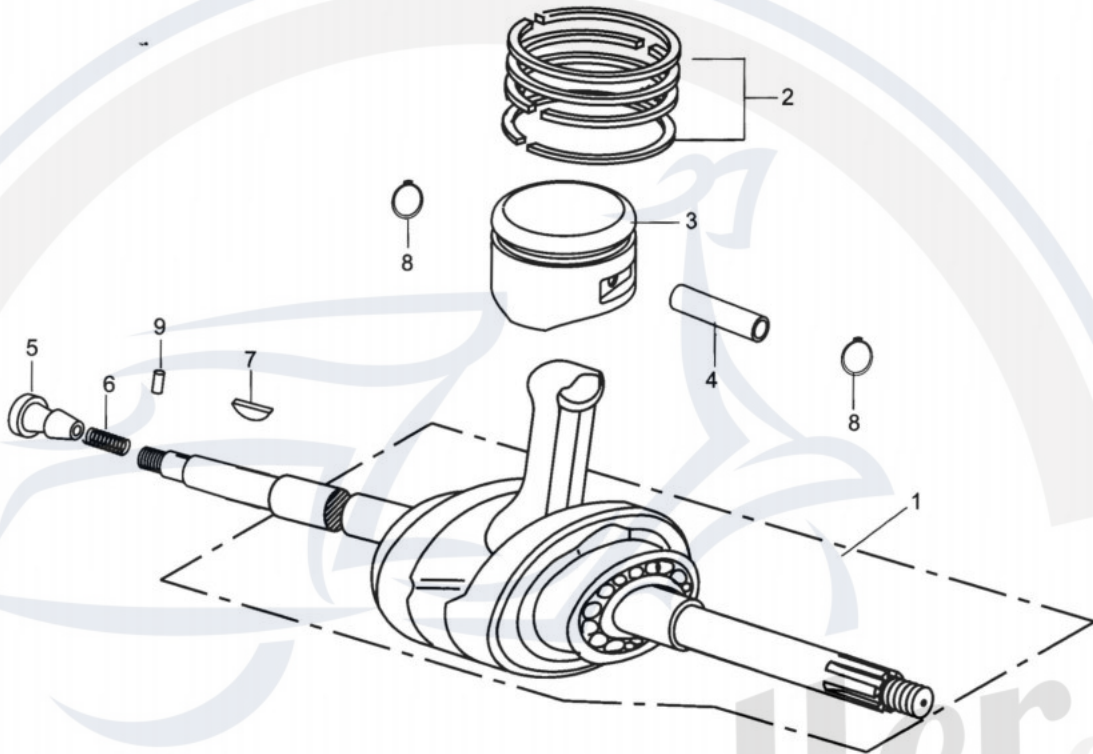
FIG.5

RIGHT SIDE COVER ASSY.



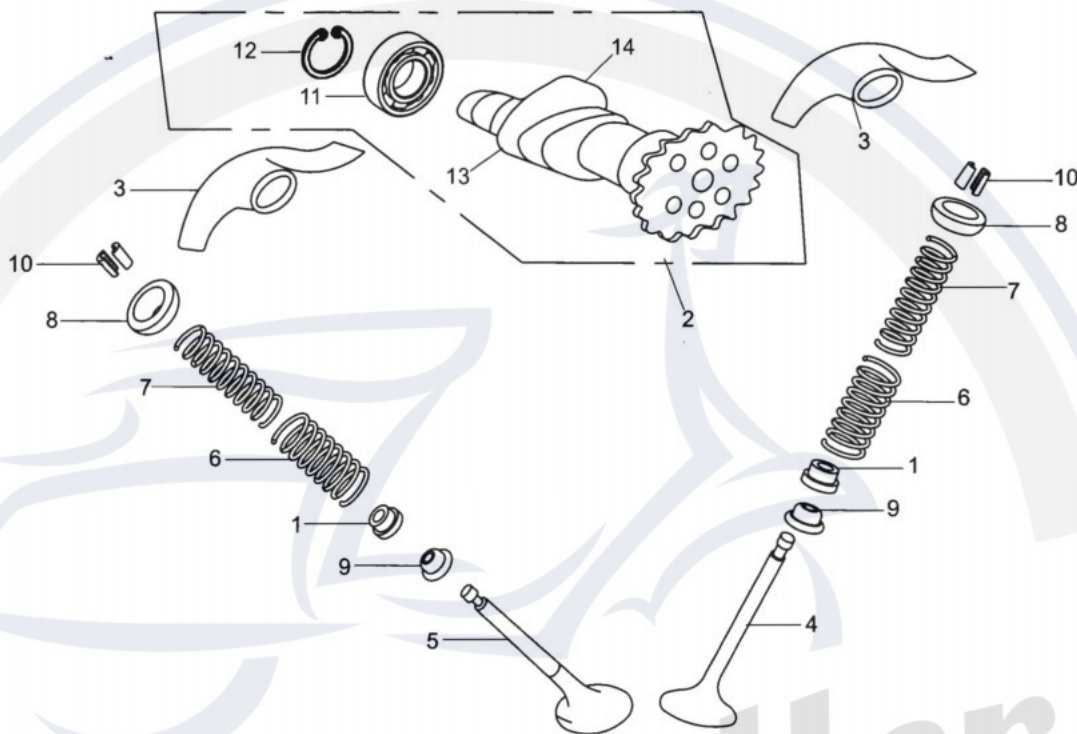
RIGHT SIDE COVER ASSY.			
REF NO.	PART NO.	DESCRIPTION	REGD NO.
1	172MM-013013	RUBBER HOSE (LINKED WITH CYLINDER COVER)	1
2	172MM-013100	RUBBER HOSE (LINKED WITH RIGHT SIDE COVER)	1
3	172MM-013015	RUBBER HOSE (LINKED WITH AIR CLEANER)	1
4	172MM-013016	RUBBER HOSE CLIP	1
5	172MM-013002	RIGHT SIDE COVER	1
6	172MM-013008	PLATE	1
7	172MM-013012	RIGHT SIDE COVER SEAT	1
8	172MM-013007	OIL FILTE SCREEN LID	1
9	152MI-013100	FILTE CORE	1
10	172MM-013006	SPRING	1
11	172MM-013001	DIPSTICK	1
12	172MM-013019	EXHAUST THREE JOINT	1
13	152MI-021008	VISION HOLE CAP	1
14	172MM-013031	FLANGE BOLT M6 x 80	1
15	172MM-013028	O-RING 30 x 3.55	1
16	152MI-021009	VISION HOLE CAP SEAL	1
17	172MM-013030	O-RING 18 x 3.55	1
18	172MM-013005	OIL DISCHARGE BOLT M12 x 1.5	1
19	152MI-021014	WASHER 12	1
20	152MI-080008	DOWEL PIN 8 x 14	2
21	QC/T621-1999-A10	WIRE CLIP ROUND	2
22	QC/T621 -1999-A12	WIRE CLIP ROUND	4
23	172MM-013010	VENTILATION JOINT	1
24	172 MM-013009	WATER DISCHARGE JOINT	1
25	152MI-013009	FLANGE BOLT M6 x 40	3
26	172MM-013026	RUBBER TUBE LINDED WITH AIR CLEANER BUSH	1
27	152MI-071007	FLANGE BOLT M6 x 28	1
28	152MI-011018	FLANGE BOLT M6 x 70	3

CRANKSHAFT CON'ROD & PISTON ASSY.



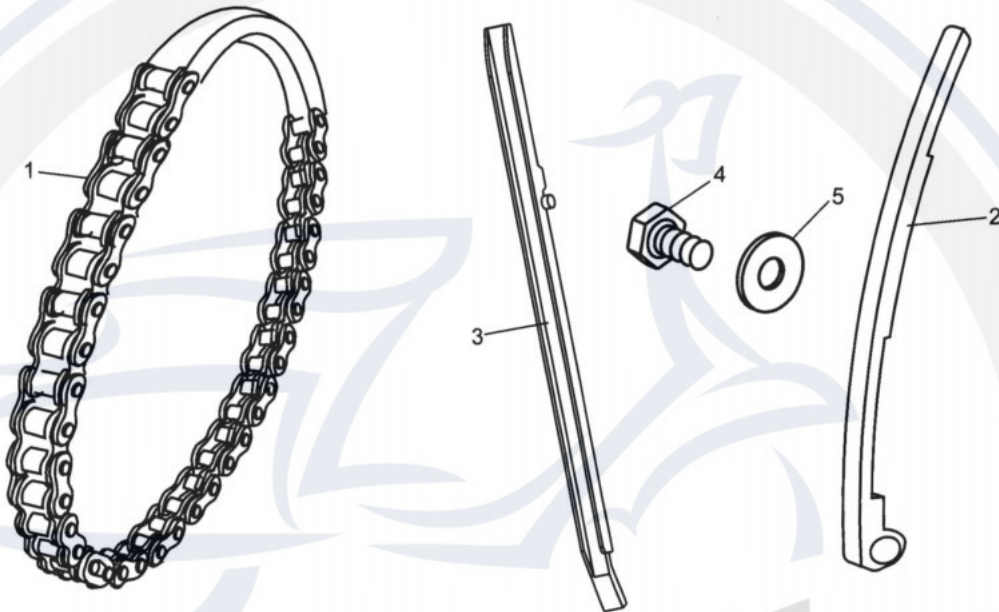
CRANKSHAFT CON'ROD & PISTON ASSY.				
REF NO.	PART NO.	DESCRIPTION	REGD NO.	
1	172MM-041000	CON'ROD ASSY.	1	
	172MM-040008	THE FIRST PISTON RING	1	
	172MM-040009	THE SECOND PISTON RING	1	
2	172MM-042000	OIL RING ASSY.	1	
3	172MM-040005	PISTON	1	
4	172MM-040007	PISTON PIN	1	
5	152MI-040011	OIL TUBE JOINT	1	
6	152MI-040010	OIL TUBE JOINT SPRING	1	
7	152MI-040006	WOODRUFF KEY	1	
8	172MM-040006	PISTON PIN CIRCLIP	2	
9	GB/T119-2000	COLUMN PIN 2 x 14	1	

VALVE TRANNY ASSY.(1)



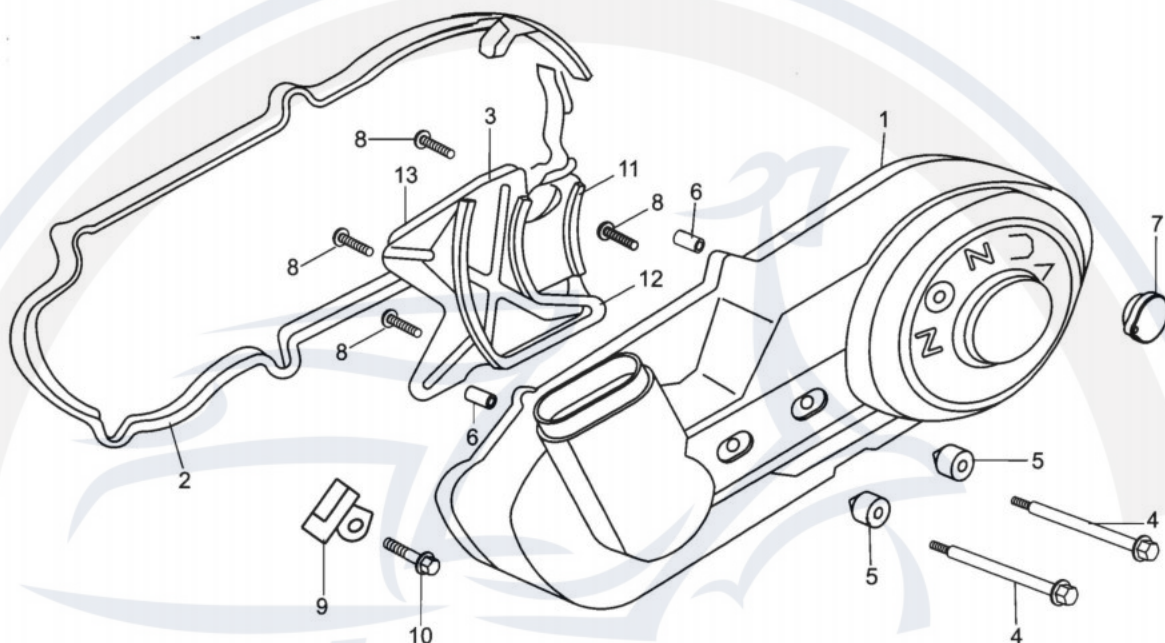
VALVE TRANNY ASSY.(1)			
REF NO.	PART NO.	DESCRIPTION	REGD NO.
1	152MI-022500	VALVE TAPPET SEAL	2
2	172MM-022300	VALVE CAM	1
3	152MI-021007	ROCKER	2
4	172MM-022001	INLET VALVE	1
5	172MM-022005	EX. VALVE	1
6	172MM-022002	OUTER VALVE SPRING	2
7	172MM-022003	INNER VALVE SPRING	2
8	152MI-022005	SPRING VALVE DISC	2
9	152MI-022001	SPRING VALVE SEAT	2
10	152MI-022006	VALVE CLIP LOCK	4
11	NTN:16002	ROLL BEARING	2
12	GB894 1-86-15	BEARING CIRCLIP	1
13	172MM-022310	CHAIN WHEEL	1
14	172MM-022301	CAMSHAFT	1

VALVE TRANNY ASSY.(2)



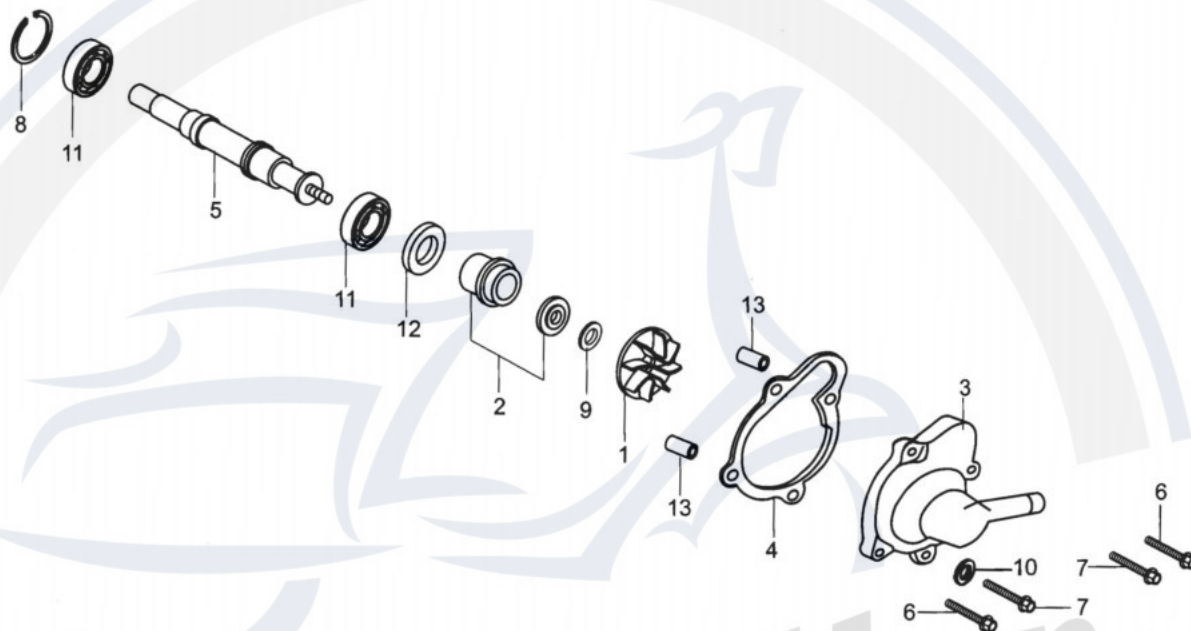
VALVE TRANNY ASSY.(2)				
REF NO.	PART NO.	DESCRIPTION	REGD NO.	
1	172MM-022200	TIME CHAIN	1	
2	172MM-023200	TENSIONER	1	
3	172MM-023001	CHAIN GUIDE PLATE	1	
4	GB96-85-6-D. Zn	BIG WASHER	1	
5	GB/T5781-2000	HEX FLANGE BOLT M6 x 12	1	

LEFT SIDE COVER ASSY.



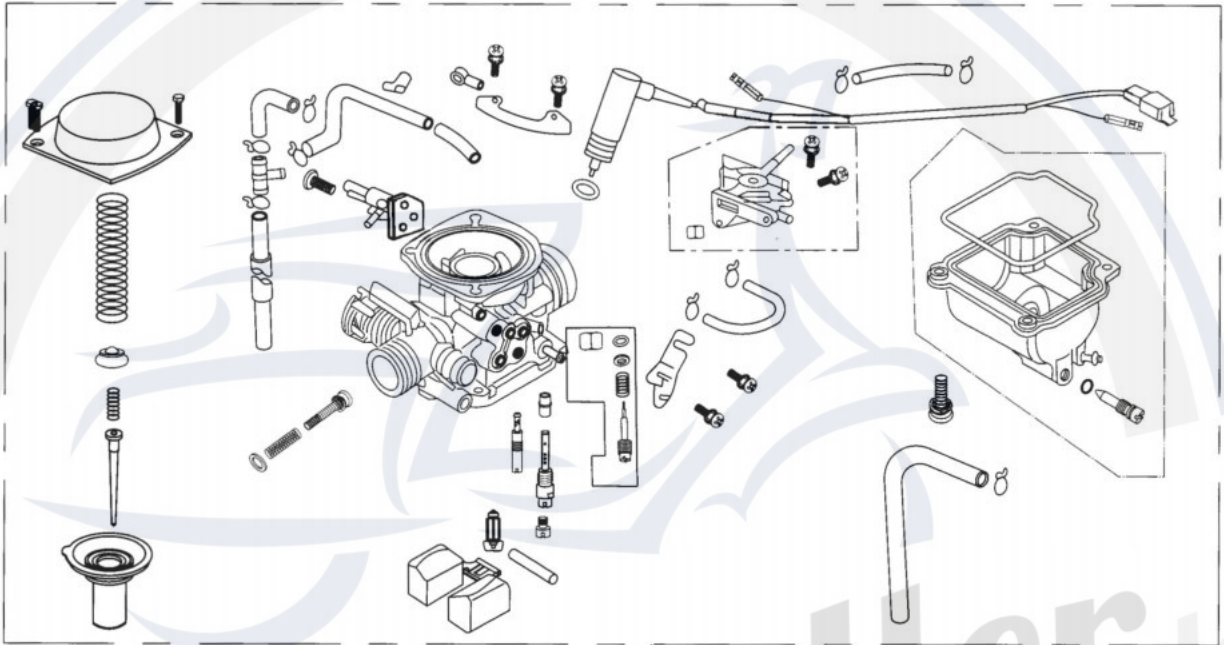
LEFT SIDE COVER ASSY.				
REF NO.	PART NO.	DESCRIPTION	REGD NO.	
1	172MM-012001	LEFTSIDE COVER	1	
2	172MM-012007	LEFT SIDE COVER SEAL	1	
3	172MM-012004	PLATE	1	
4	172MM-012003	FLANGE BOLT	2	
5	152MI-012200	SHOCK ABSORPTION BLOCK ASSY.	2	
6	152MI-011007	DOWEL PIN O10 x 16	2	
7	172MM-012008	OIL DISCHARGE BOLT VISION HOLE CAP	1	
8	GBT818-2000-M5X8	CROSS FLANGE BOLT	4	
9	172MM-012100	WIRE CLAMP	1	
10	152MI-090005	FLANGE BOLT M6 x 16	1	
11	172MM-012002	DUST-PROOF BAR 1	1	
12	172MM-012006	DUST-PROOF BAR 2	1	
13	172MM-012005	WOOL MAT	1	

WATER PUMP ASSY.



WATER PUMP ASSY.			
REF NO.	PART NO.	DESCRIPTION	REGD NO.
1	172MM-080004	WATER PUMP IMPELLER	1
2	152MI-081000	WATER SEAL	1
3	172MM-080003	WATER PUMP HOUSING	1
4	172MM-080002	WATER PUMP HOUSING SEAL	1
5	172MM-080001	WATER PUMP SHAFT	1
6	152MI-013009	FLANGE BOLT M6 x 40	2
7	152MI-02017	FLANGE BOLT M6 x 25	2
8	GBT893 1-86-19	CIRCLIP	1
9	152MI-080007	WASHER 7.5 x 13 x 1.2	1
10	152MI-080011	WASHER 6x 12 x 1	1
11	NTN:6800	ROLL BEARING	2
12	172MM-080005	OIL SEAL 10 x 20 x 5	1
13	152MI-080008	DOWEL PIN 8 x 14	2

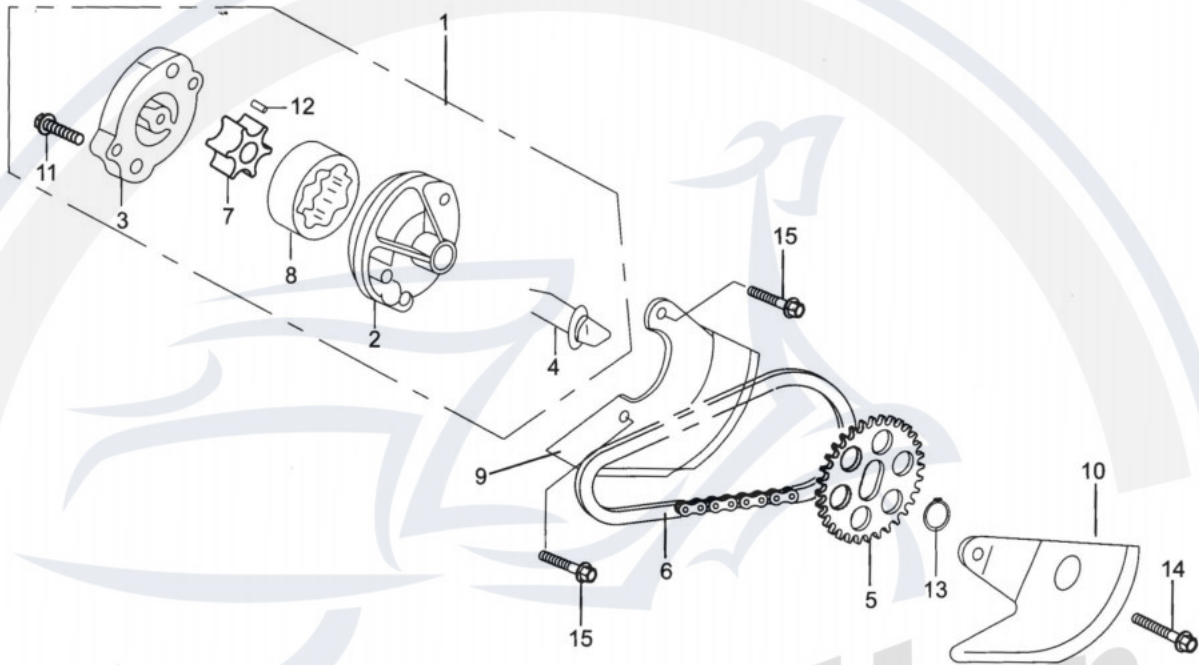
CARBURETOR COMP.



CARBURETOR COMP.

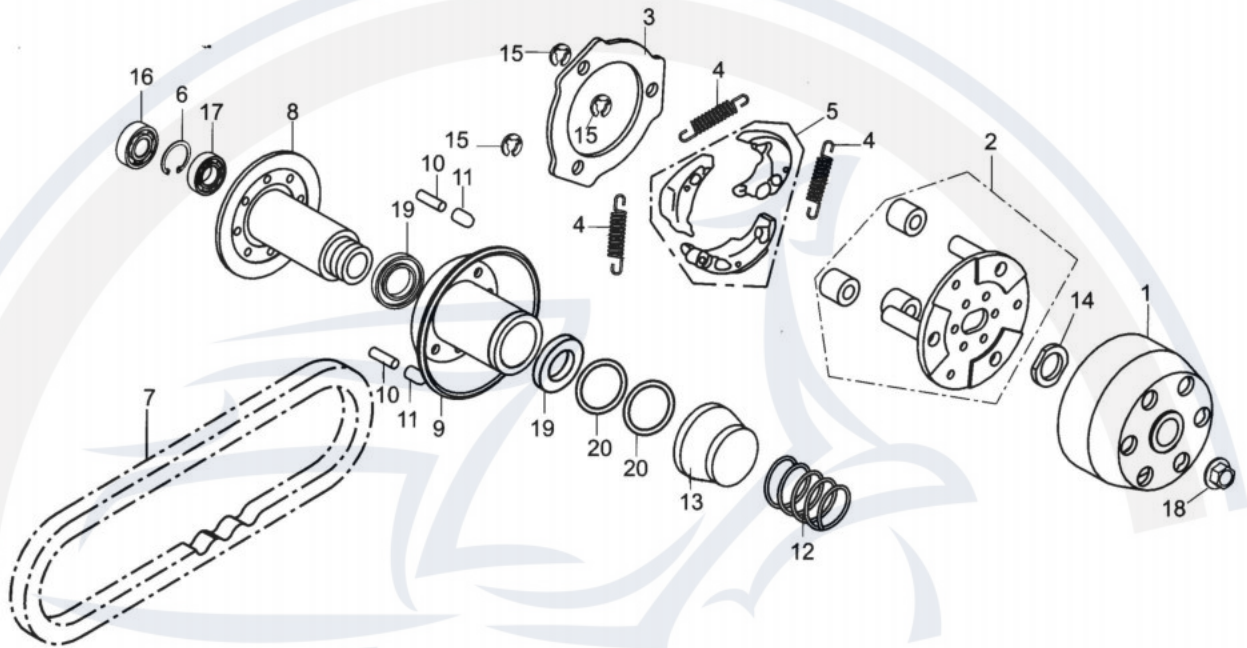
REF NO.	PART NO.	DESCRIPTION	REGD NO.
1	172MM-100000	CARBURETOR COMP.	1

OIL PUMP ASSY.



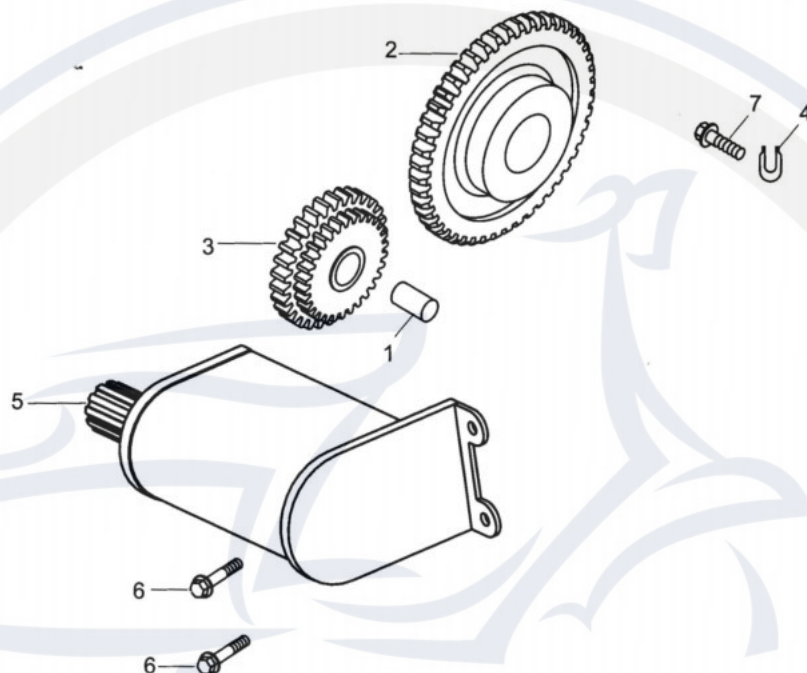
OIL PUMP ASSY.				
REF NO.	PART NO.	DESCRIPTION	REGD NO.	
1	152MI-071000	OIL PUMP ASSY.	1	
2	152MI-071002	OIL PUMP	1	
3	152MI-071003	OIL PUMP COVER PLATE	1	
4	152MI-071001	OIL PUMP SHAFT	1	
5	152MI-070001	OIL PUMP SPROCKET	1	
6	152MI-073000	OIL PUMP CHAIN	1	
7	152MI-071004	INNER OIL PUMP ROTOR	1	
8	152MI-071005	OUTER OIL PUMP ROTOR	1	
9	152MI-070002	OIL PUMP DIVISION PLATE A	1	
10	152MI-072000	OIL PUMP DIVISION PLATE B	1	
11	GB878-85	FLANGE BOLT M3 x 12	1	
12	152MI-0710006	DOWEL PIN 4 x 6.5	1	
13	GB897 1-86-10	CIRCLIP	1	
14	152MI-021019	FLANGE BOLT M6 x 12	1	
15	152MI-071007	FLANGE BOLT M6 x 28	2	

CLUTCH ASSY.



CLUTCH ASSY.				
REF NO.	PART NO.	DESCRIPTION	REGD NO.	
1	172MM-052500	OUTER WHEEL CLUTCH	1	
2	172MM-052400	DRIVEN DISC	1	
3	172MM-052003	SIDE DISC	1	
4	172MM-052006	CLUTCH RETURN SPRING	3	
5	172MM-052600	CENTRIFUGAL BLOCK	3	
6	GB/T8931-86-28	CIRCLIP	1	
7	172MM-052700	DRIVE BELT	1	
8	172MM-052300	DRIVEN WHEEL	1	
9	172MM-052100	MOVABLE DRIVEN WHEEL	1	
10	172MM-052002	GUIDE COLUMN PIN	4	
11	172MM-052001	GUIDE ROLLER	4	
12	172MM-052004	CLUTCH SPRING	1	
13	172MM-052200	SEAL BUSH	1	
14	172MM-052005	FLAT NUT M30 x 1	1	
15	GB/T896-86-6	CIRCLIP	3	
16	GB278-89-1060902	ROLL BEARING	1	
17	172MM-052310	NEEDLE BEARING 22 x 29 x 18	1	
18	172MM-052008	NUT M12 x 1.25	1	
19	172MM-052104	DRIVEN WHEEL OIL SEAL	2	
20	GB3452.1-82	O-RING 46.2 x 1.8	2	

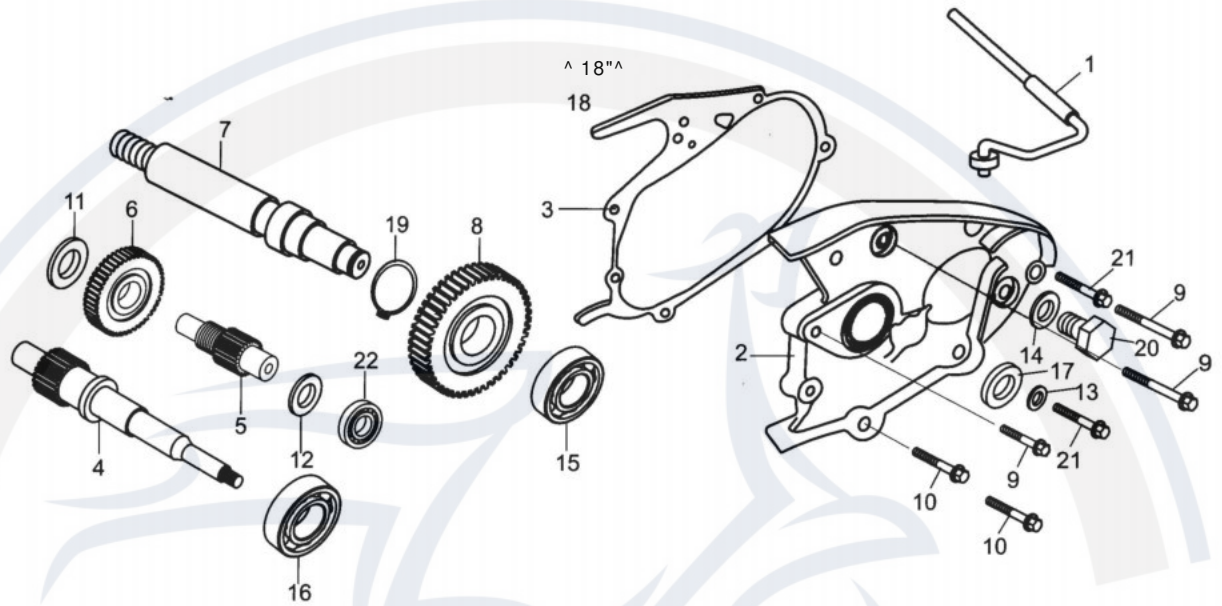
ELECTRIC STARTER ASSY.



ELECTRIC STARTER ASSY.

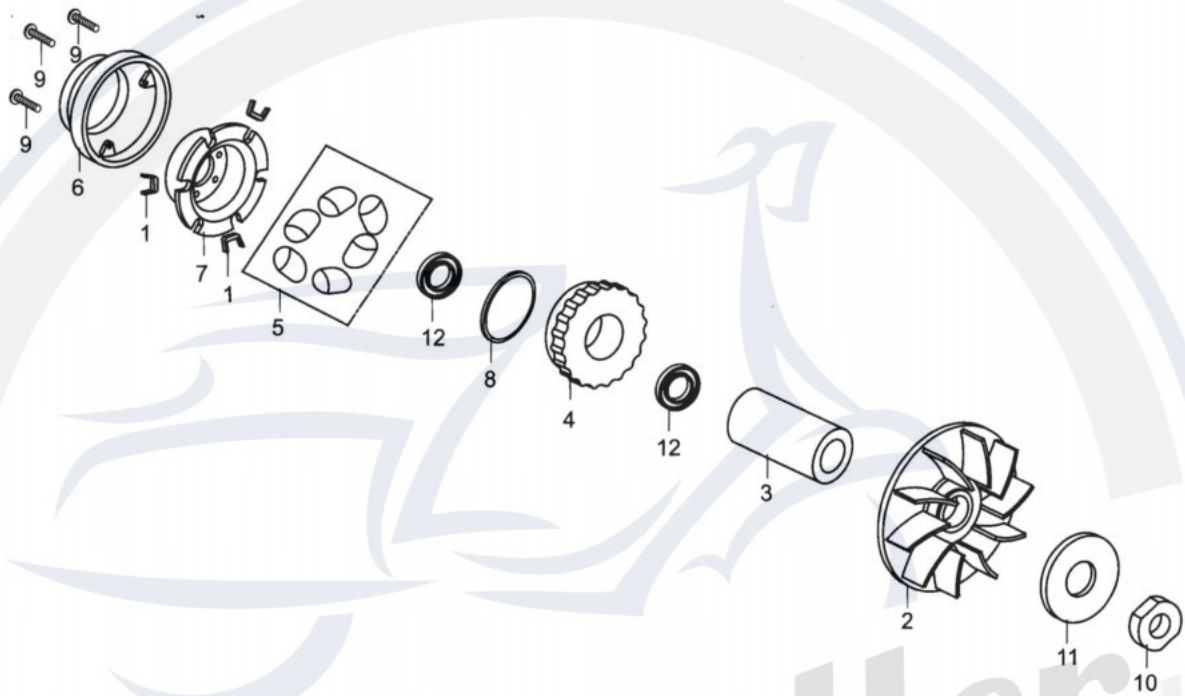
REF NO.	PART NO.	DESCRIPTION	REGD NO.
1	172MM-090001	DOUBLE-GEAR AXLE	1
2	172MM-092000	DRIVEN GEAR	1
3	172MM-091000	DOUBLE-GEAR	1
4	172MM-090007	FIX PLATE	1
5	172MM-093000	START MOTOR	1
6	152MI-080013	FLANGE BOLT M6*22	2
7	172MM-090008	FLANGE BOLT M6*14	1

REDUCTION BOX ASSY.



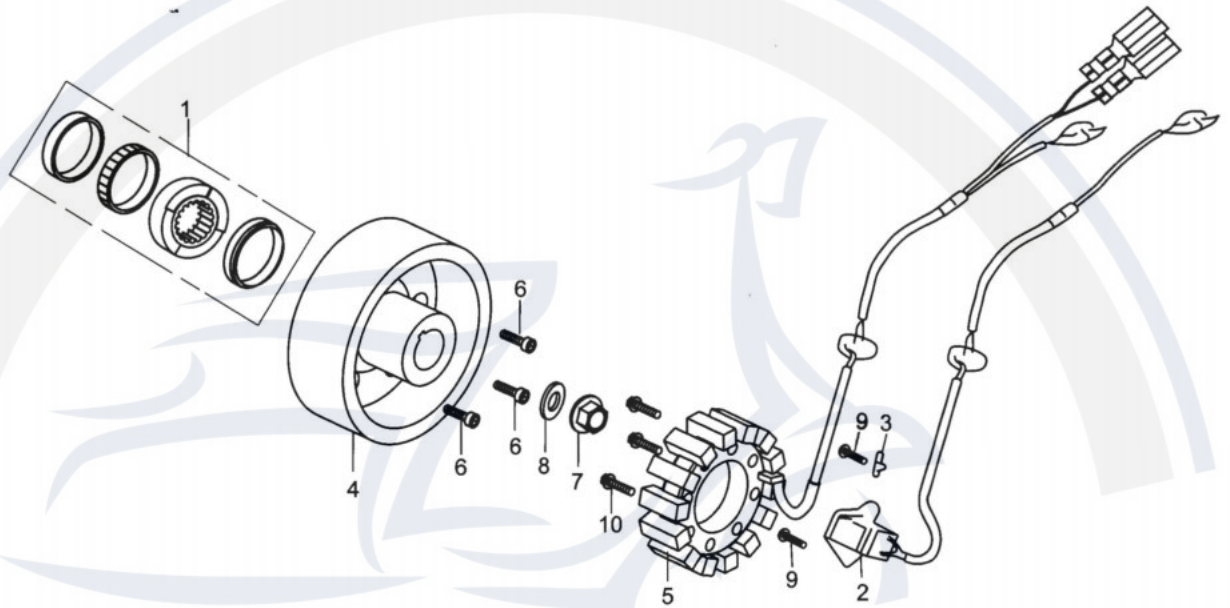
REDUCTION BOX ASSY.			
REF NO.	PART NO.	DESCRIPTION	REGD NO.
1	172MM-062000	VENTILATION PIPE	1
2	172MM-060009	REDUCTION BOX CAP	1
3	172MM-061000	REDUCTION CASE CAP SEAL	1
4	172MM-060001	CHIEF SHAFT	1
5	172MM-060003	SECONDARY SHAFT	1
6	172MM-060006	SECONDARY GEAR SHAFT	1
7	172MM-060007	OUTPUT SHAFT	1
8	172MM-060008	OUTPUT GEAR	1
9	172MM-060010	FLANGE BOLT M8 x 38	3
10	172MM-060011	FLANGE BOLT M8 x 28	2
11	152MI-060003	STOP GASKET 14	1
12	172MM-060004	STOP GASKET 14	1
13	152MI-060009	WASHER 6	1
14	152MI-060010	WASHER 10	1
15	NTN: 6304	ROLL BEARING	1
16	172MM-060002	ROLL BEARING 22 x 50 x 14	1
17	GB9877.1-88	OIL SEAL 22 x 35 x 5	1
18	152M1-021005	DOWEL PIN 10 x 14	2
19	GB/T894.1-86-24	CIRCLIP	1
20	152MI-060011	FLANGE BOLT M 10 x 1.25 OIL DISCHARGE	1
21	152MI-080012	FLANGE BOLT M6 x 32	2
22	NTN: HMK1416	NEEDLE BEARING	1

GEARBOX ASSY.



GEARBOX ASSY.			
REF NO.	PART NO.	DESCRIPTION	REGD NO.
1	172MM-051004	SLIDE BLOCK	3
2	172MM-051005	DRIVE WHEEL	1
3	172MM-051003	DRIVE WHEEL BUSH	1
4	172MM-051100	MOVABLE DRIVE WHEEL	1
5	172MM-051200	CENTRIFUGAL ROLLER	6
6	172MM-051001	DRIVE WHEEL CAP	1
7	172MM-051002	SLOPE PLATE	1
8	GB3452 1-82	O-RING	1
9	GB9074 14-88	FLANGE BOLT	3
10	172MM-051007	NUT M14 x 1.5	1
11	172MM-051006	WASHER 14.5 x 30 x 2	1
12	152MI-051103	OIL SEAL 27 x 34 x 3.5	2

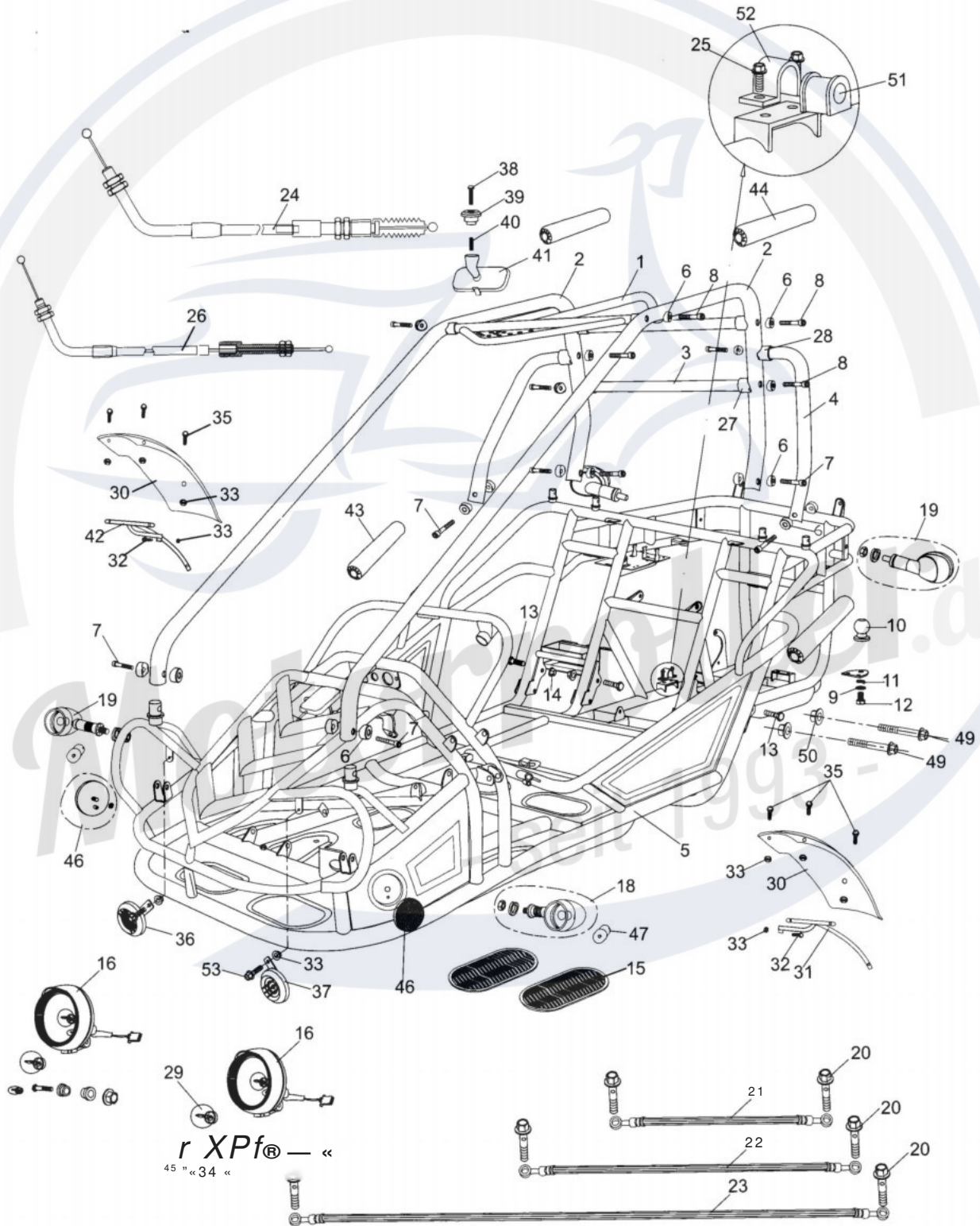
MAGNETO COMP.



MAGNETO COMP.				
REF NO.	PART NO.	DESCRIPTION	REGD NO.	
1	172MM-094000	CLUTCH	1	
2	172MM-033000	IGNITION COIL	1	
3	172MM-013008	WIRE PLATE	1	
4	172MM-031000	FLYWHEEL	1	
5	172MM-032000	STATOR	1	
6	GB/T70 1-2000	INNER HEX FLANGE BOLT M8 X 18	3	
7	172MM-040001	NUT M16 x 1	1	
8	172MM-040002	WASHER 16.3x30x2	1	
9	152MI-030002	FLANGE BOLT M5 x 16	2	
10	152MI-060012	FLANGE BOLT M6 x 30	3	

FIG. 18

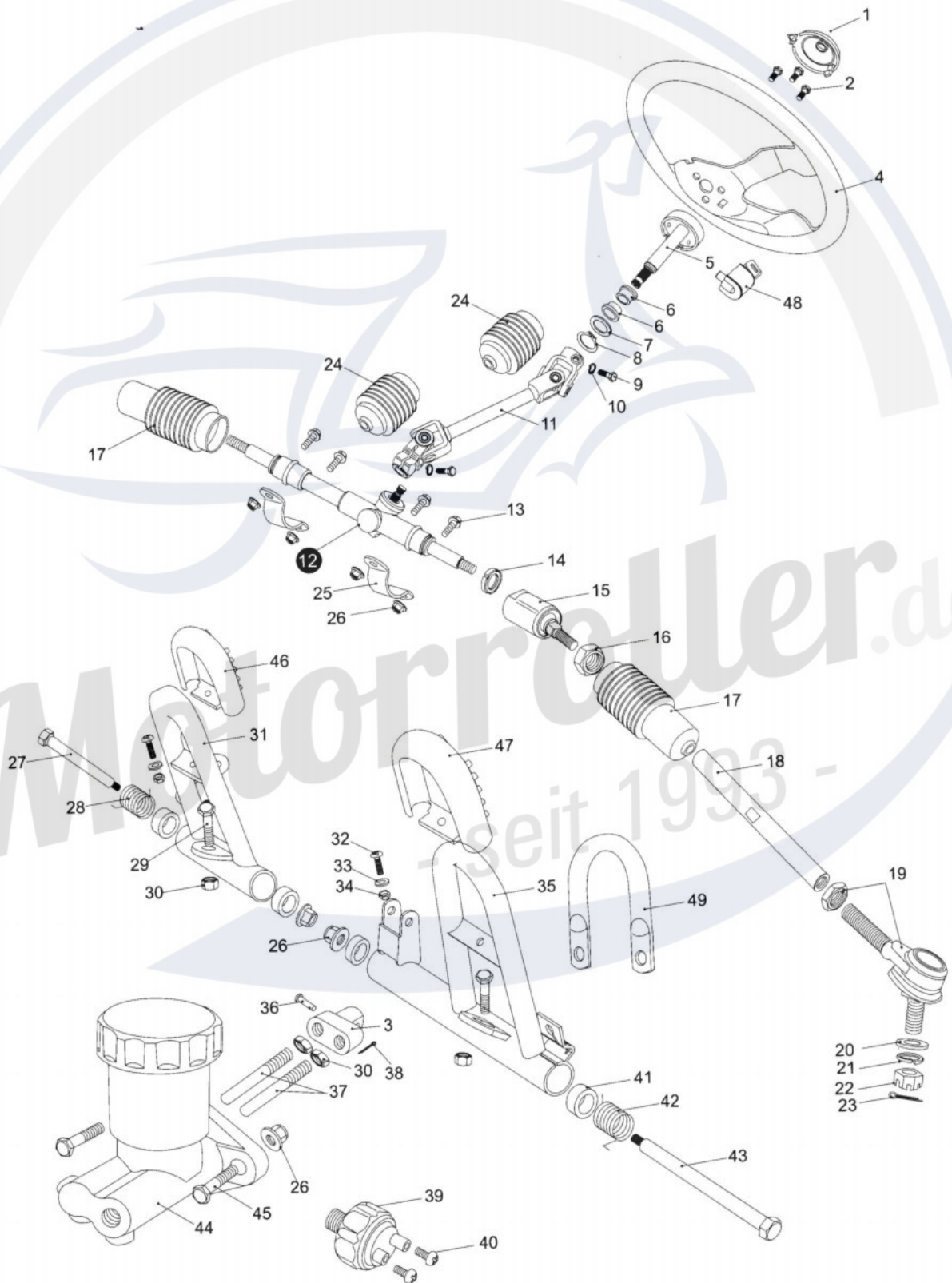
FRAME GROUP



FRAME GROUP				
REF NO.	PART NO.	DESCRIPTION	REGD NO.	
1	6.000.061	C.B.C. CROSS BAR, FR (B.R.S.)	1	
2	8.070.034	C.B.C. BAR CAGE (B.R.S.)	2	
3	8.080.033	C.B.C. CROSS BAR, RR (B.R.S.)	1	
4	8.070.035	C.B.C. BAR, L./R. SIDE (B.R.S.)	2	
5	2.000.045	FRAME COMP. (B.R.S.)	1	
6	8.010.047	R-WASHER	18	
7	9.908.050N	SOCKET BOLT M8x 1.25x50	6	
8	9.908.055N	SOCKET BOLT M8x 1.25x55	10	
9	9.300.016	WASHER 016	1	
10	2.200.001	TOW BALL	1	
11	9.400.016	LOCK WASHER 016	1	
12	9.101.625	BOLT M16 x 25	1	
13	9.112.025	BOLT-WASHER M12x 1.25x25	4	
14	9.220.012	LOCKING FLANGE NUT M12	4	
15	7.020.012	RUBER FOOT PLATE	2	
16	6.000.104	HEADLIGHT UNIT	2	
17	9.108.050	BOLT-WASHER M8 x 1.25 x 50	2	
18	6.000.155	WINKER LIGHT ASSY. L. FR./R.RR.	2	
19	6.000.156	WINKER LIGHT ASSY. R. FR./L.RR.	2	
20	9.700.004	BANJO BOLT M 10x24	6	
21	6.000.089	BRAKE HOSE ASSY. L. 34"	1	
22	6.000.090	BRAKE HOSE ASSY. R. 43"	1	
23	6.000.230	BRAKE HOSE ASSY. RR. 80"	1	
24	6.000.232	THROTTLE CABLE COMP.	1	
25	9.106.012	BOLT M6 x 12	2	
26	6.000.231	PARKING BRAKE CABLE COMP.	1	
27	7.010.017	TUBE SEAT 025	6	
28	7.010.016	TUBE SEAT 032	2	
29	9.090.003	HEADLIGHT BULB 35W/35W/ 12V	2	
30	7.010.034	FENDER, FR.	2	
31	6.000.067	FRONT FENDER BRACKET, L.	1	
32	9.100.640	BOLT M6 x 40	2	
33	9.210.008	LOCKING FLANGE NUT M6	10	
34	7.020.049	HEADLIGHT RUBBER MOUNT	4	
35	9.106.014	BOLT-WASHER M6x14	6	
36	6.000.135	HORN, H.	1	
37	6.000.136	HORN, L.	1	
38	9.100.525	BOLT M5 x 25	1	
39	8.010.086	REAR MIRROR MOUNT	1	
40	8.040.005	REAR VIEW MIRROR SPRING	1	
41	6.000.084	REAR MIRROR ASSY.	1	
42	6.000.102	FRONT FENDER BRACKET, R.	1	
43	6.000.083	FOAM PADDING-1	2	
44	6.000.116	FOAM PADDING-2	2	
45	9.000.004	POSITION LIGHT BULB 3W 12V	2	
46	6.000.114	FRONT REFLECTOR	2	
47	9.090.006	WINKER BULB 10W 12V	4	
48	9.220.008	LOCKING FLANGE NUT M8	2	
49	9.110.110	BOLT M10x 1.25x110	2	
50	9.220.010	LOCKING NUT M10x 1.25	2	
51	2.100.001	SWAY BAR BRACE BUSHING	1	
52	2.100.002	SWAY BAR BRACE	1	
53	9.106.012	BOLT M6 x 12	2	1

FIG. 19

STEERING SHAFT ASSY.

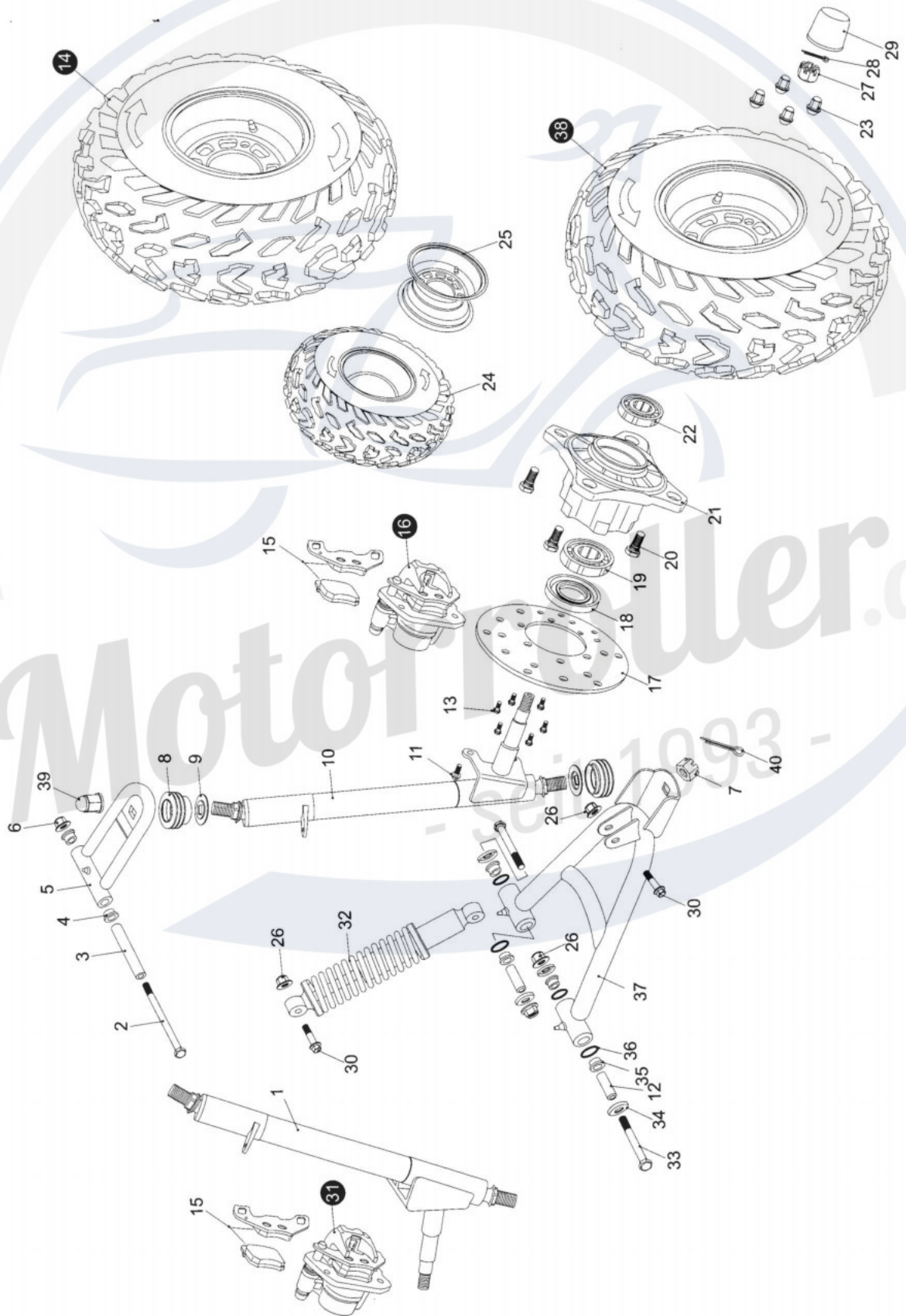


STEERING SHAFT ASSY.				
REF NO.	PART NO.	DESCRIPTION	REGD NO.	
1	7.010.041	STEERING BOLT COVER	1	
2	9.100.612	BOLT STRAP M6x12	3	
3	8.030.024	SPINDLE BRACKET	1	
4	7.020.038	STEERING WHEEL	1	
5	6.000.122	STEERING SHAFT	1	
6	7.010.026	STEERING SHAFT BUSH	2	
7	9.700.020	SPECIAL WASHER 020	1	
8	9.700.120	CIRCLIP 020	1	
9	9.100.825	BOLT M8 x 25	2	
10	9.400.008	LOCK WASHER 08	2	
11	6.000.093	STEERING KNUCKLE	1	
12	84.000.014	STEERING GEAR	1	
13	9.108.025	BOLT-WASHER M8 x 1.25 x 25	4	
14	9.900.016	ROUND NUT M16 x 1.5	2	
15	4.000.008	STEERING BALL JOINT	2	
16	9.200.010	NUT M10	2	
17	7.020.002	BALL JOINT DUST COVER	2	
18	8.010.157	TIE ROD	2	
19	6.000.062	ROD END	2	
20	9.300.010	FLAT WASHER O10	2	
21	9.400.010	LOCK WASHER O10	2	
22	9.800.010	CASTLE NUT M10	2	
23	9.500.215	COTTER PIN 02x15	2	
24	7.020.066	STEERING KNUCKLE DUST COVER	2	
25	8.020.014	STEERING GEAR BRACKET	2	
26	9.220.008	LOCKING FLANGE NUT M8	8	
27	9.708.145	THROTTLE PEDAL BOLT M8x 1.25x145	1	
28	8.040.001	THROTTLE PEDAL RETURN SPRING, L.	1	
29	9.108.040	BOLT-WASHER M8x 1.25x40	2	
30	9.200.008	NUT M8	2	
31	4.000.016	THROTTLE PEDAL COMP.	1	
32	9.600.515	PAN SCREW M5 x 15	2	
33	9.300.005	FLAT WASHER 06	2	
34	9.210.005	NYLON LOCK NUT M5	2	
35	84.000.015	BRAKE PEDAL COMP.	1	
36	9.700.624	PIN 06x24	1	
37	8.010.081	SPINDLE PIN	2	
38	9.500.212	COTTER PIN 02x12	1	
39	6.000.063	BRAKE LAMP SWITCH ASSY.	1	
40	9.600.306	PAN SCREW M3 x 6	2	
41	7.010.004	PEDAL BUSH	4	
42	8.040.007	BRAKE PEDAL RETURN SPRING, R.	1	
43	9.708.222	BRAKE PEDAL BOLT M8 x 1.25 x 222	1	
44	6.000.076	MASTER CYLINDER	1	
45	9.108.035	BOLT-WASHER M8x 1.25x35	2	
46	7.020.036	THROTTLE PEDAL PAD	1	
47	7.020.037	BRAKE PEDAL PAD	1	
48	6.000.134	STEERING WHEEL LOCK	1	
49	8.070.044	MASTER CYLINDER BRACKET	1	

FIG.20

SA.../wjs... AsSuuM IV...T.Asv...Ck.EE&&&&76

FRONT SUSPENSION ARM ASSY.



Aktuelle Preise erfahren sie auf www.motorroller.de

FIG.21

FULL SHIFTING ASSY.

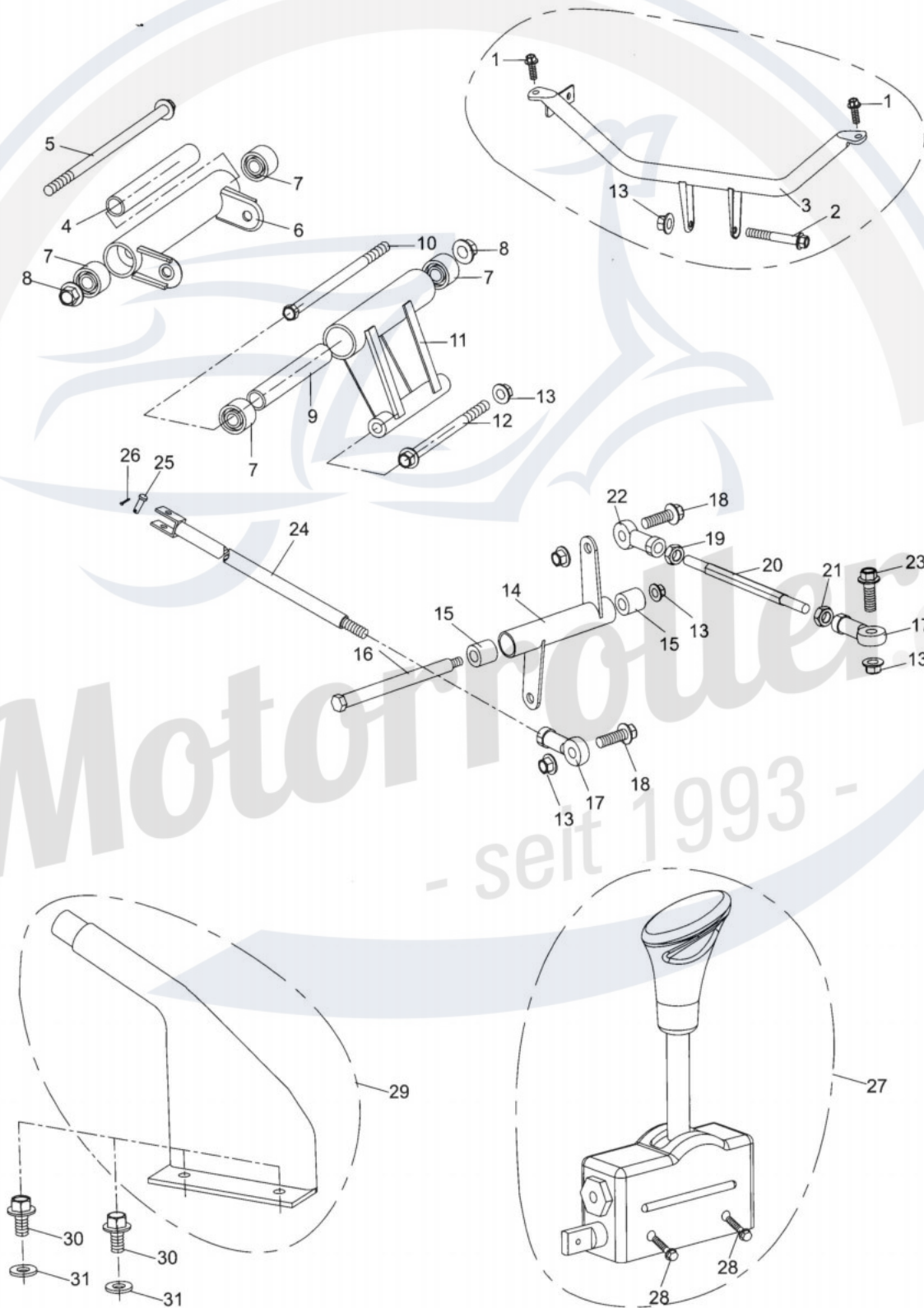
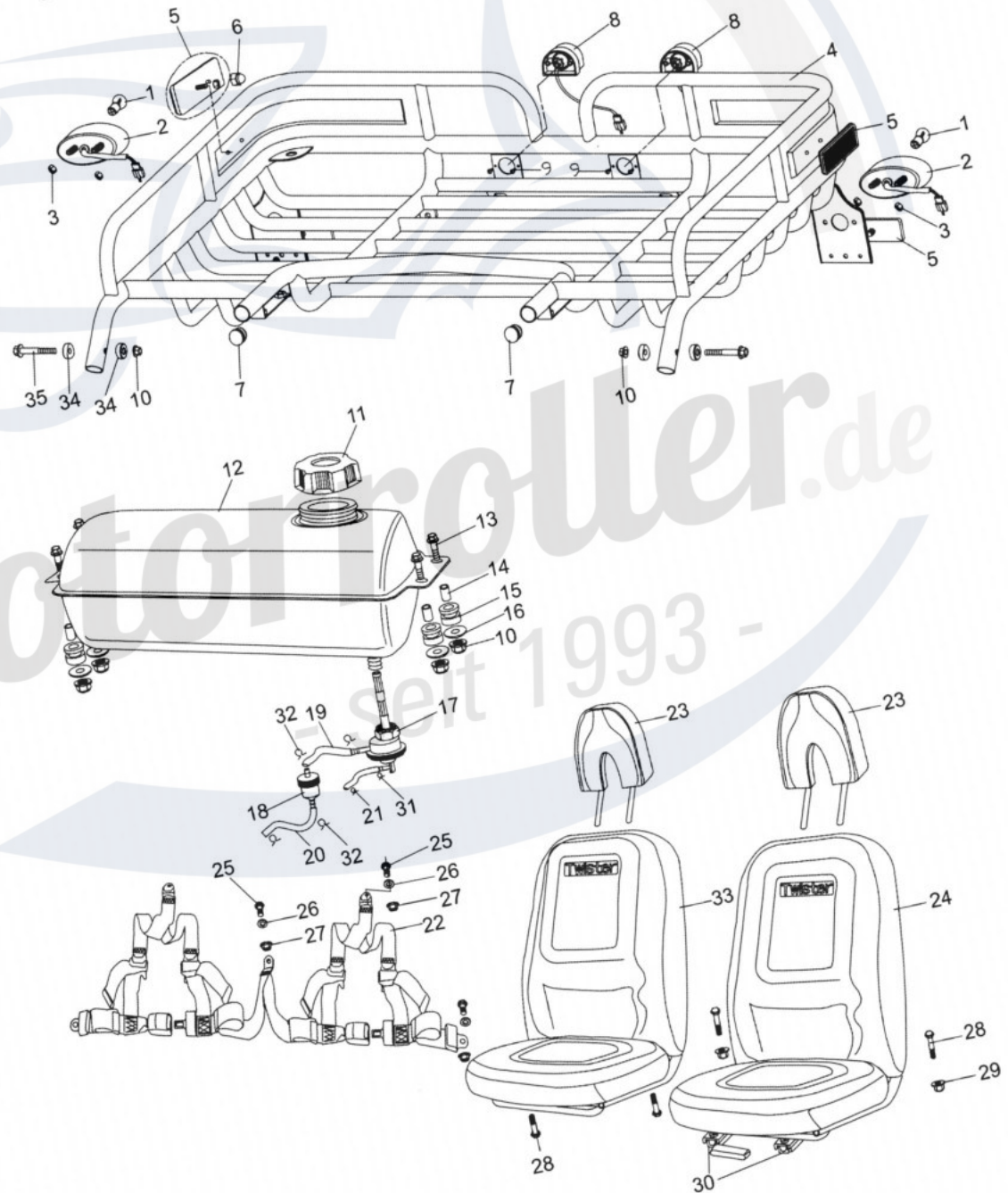


FIG.22

REAR Ca»® RACK J_{seA}t BELT

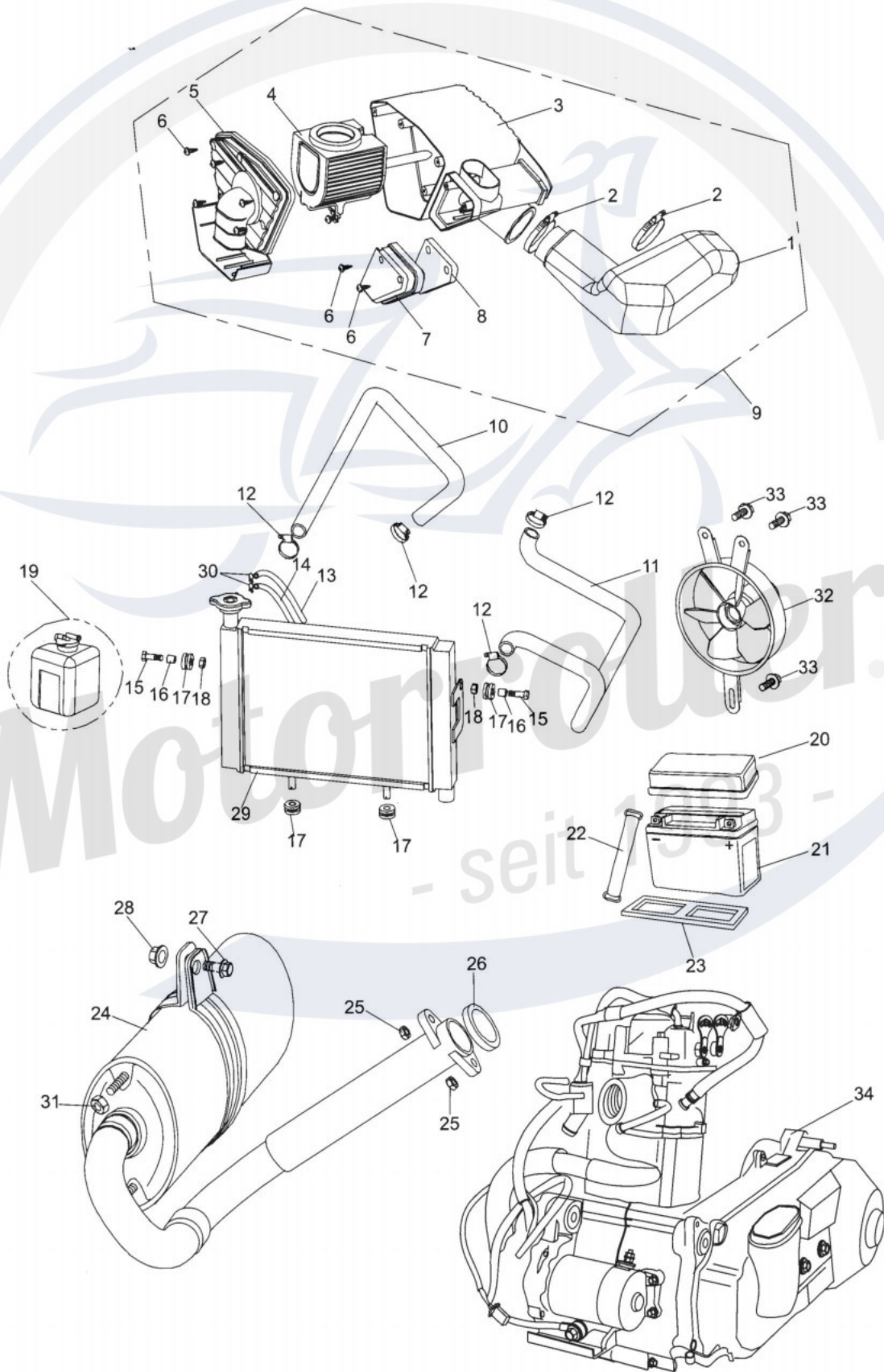


REAR CARGO RACK/ SEAT/ BELT

REF NO.	PART NO.	DESCRIPTION	REGD NO.
1	9.090.005	TAIL LIGHT BULB 21W/5W 12V	2
2	6.000.144	TAIL LIGHT	2
3	9.210.006	LOCK NYLON NUT M6	4
4	2^000.046	REAR CARGO RACK (B.R.S.)	1
5	6.000.111	REAR SIDE REFLECTOR ®	4
6	8.010.171	LUG NUT	2
7	7.020.032	TUBE COVER	2
8	6.000.241	LICENSE LIGHT ASSY.	2
9	9.804.003	SCREW ST3.5 x 10	4
10	9.220.008	LOCK FLANGE NUT M8	6
11	6.000.145	FUEL TANK CAP COMP.	1
12	4.000.029	FUEL TANK COMP. (B.R.S.)	1
13	9.108.025	BOLT-WASHER M8x 1.25x25	4
14	8.010.034	TANK COMP. COLLAR	4
15	7.020.005	RUBBER MOUNT	4
16	9.300.008	FLAT WASHER 08	4
17	6.000.046	FUEL AUTO COCK ASSY.	1
18	6.000.056	GAS FILTER	1
19	7.020.030	TUBE COMP. FUEL #1	1
20	7.020.029	TUBE COMP. FUEL #2	1
21	7.020.031	TUBE COMP. VACUUM	1
22	6.000.146	SAFETY BELT	1
23	6.000.094	HEAD-REST	2
24	6.000.081	SEAT COMP L.	1
25	9.700.001	SPECIAL BOLT M7/16" x28	1
26	9.700.002	BELT WASHER 012	1
27	9.700.003	NUT BELT M7/A6"	1
28	9.900.840	BOLT STRAP M8 x 1.25 x 40	2
29	9.220.008	LOCK FLANGE NUT M8	2
30	6.000.057	SEAT RAIL SET	1
31	8.040.008	VACUUM TUBE	2
32	8.040.009	FUEL TUBE	4
33	6.000.082	SEAT COMP R.	1
34	8.010.047	R-WASHER	4
35	9.908.055	BOLT STRAP M8 x 1.25 x 55	2

FIG.23

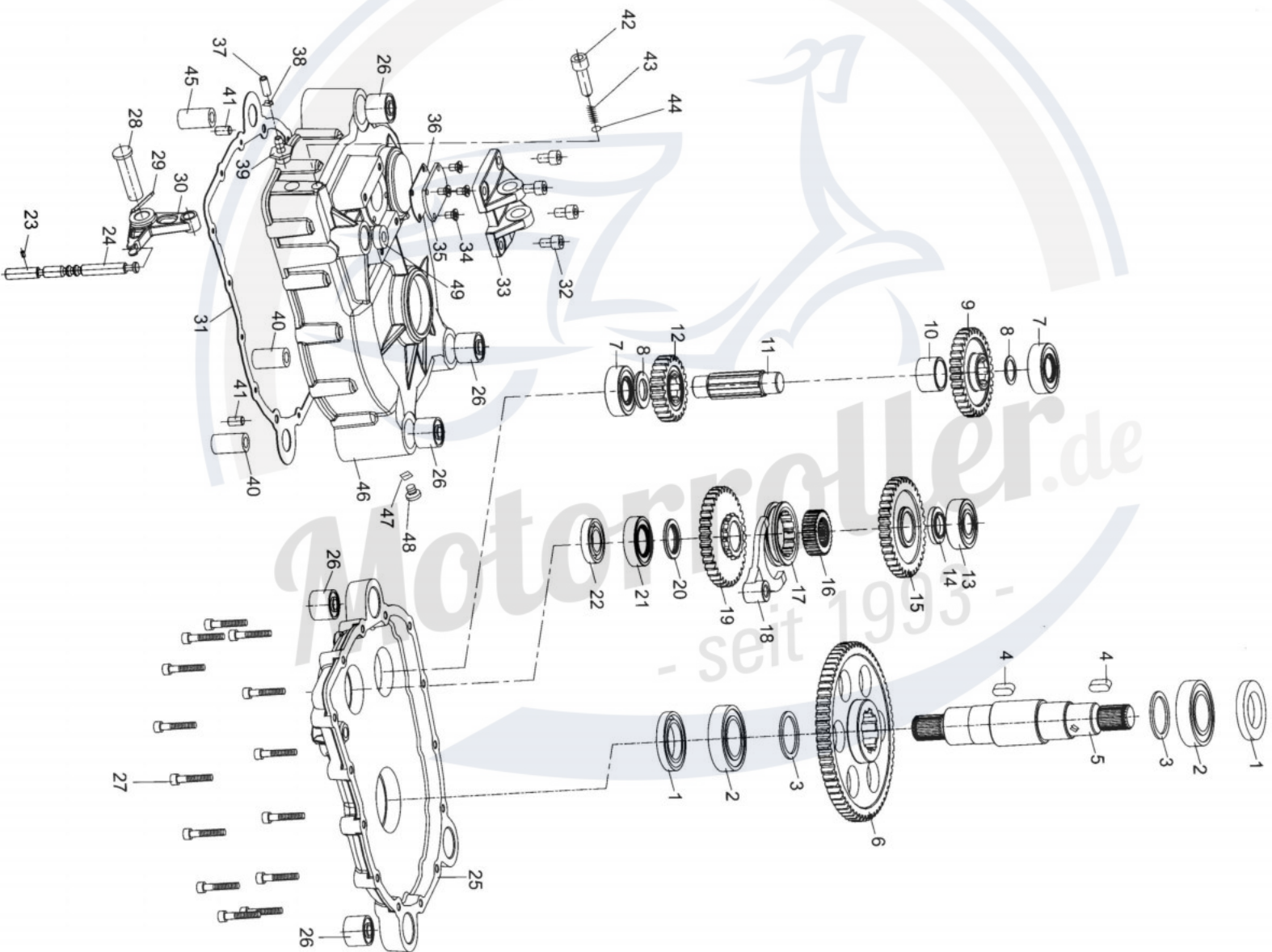
AIR CLEANER / RADIATOR / BATTERY / MUFFLER ASSY.



AIR CLEANER / RADIATOR / BATTERY / MUFFLER ASSY.				
REF NO.	PART NO.	DESCRIPTION	REGD NO.	
1	7.090.035	AIR CLEANER DUCT	1	
2	7.090.036	AIR CLEANER CLAMP	2	
3	7.090.037	AIR CLEANER CASE COMP.	1	
4	7.090.038	AIR CLEANER ELEMENT	1	
5	7.090.039	AIR CLEANER COVER	1	
6	9.805.003	TAPPING SCREW M5x16	7	
7	7.090.040	AIR CLEANER GAUZE COVER	1	
8	7.090.041	AIR CLEANER ELEMENT GAUZE	1	
9	4.000.032	AIR CLEANER ASSY.	1	
10	7.090.042	TUBE COMP. WATER 1#	1	
11	7.090.043	TUBE COMP. WATER 2#	1	
12	7.090.044	TUBE CLAMP	4	
13	7.090.045	TUBE COMP. WATER 3#	1	
14	7.090.046	TUBE COMP. WATER 4#	1	
15	9.100.830	BOLT M8x 30x1.25	2	
16	7.090.047	RADIATOR COMP. COLLAR	2	
17	7.020.069	RUBBER MOUNT	2	
18	9.200.008	NUT M8	2	
19	6.000.248	COLLANTTANK	1	
20	7.010.028	BATTERY COVER	1	
21	6.000.085	BATTERY (YTX12-BS)	1	
22	7.021.023	BATTERY BAND	1	
23	7.020.020	BATTERY LOWER	1	
24	7.090.049	MUFFLER COMP. EX.	1	
25	9.040.027	MUFFLER JOINT NUT M6	2	
26	7.090.050	EX. PIPE GASKET	1	
27	9.110.030	BOLT-WASHER M10x 1.25x30	1	
28	9.020.010	NUT M10	1	
29	4.000.033	RADIATOR COMP.	1	
30	7.090.051	TUBE CLAMP	2	
31	9.200.006	NUT M6	2	
32	6.000.249	FAN COMP.	1	
33	7.090.052	BOLT	6	
34	2.000.047	250CC ENGINE	1	

FIG.24

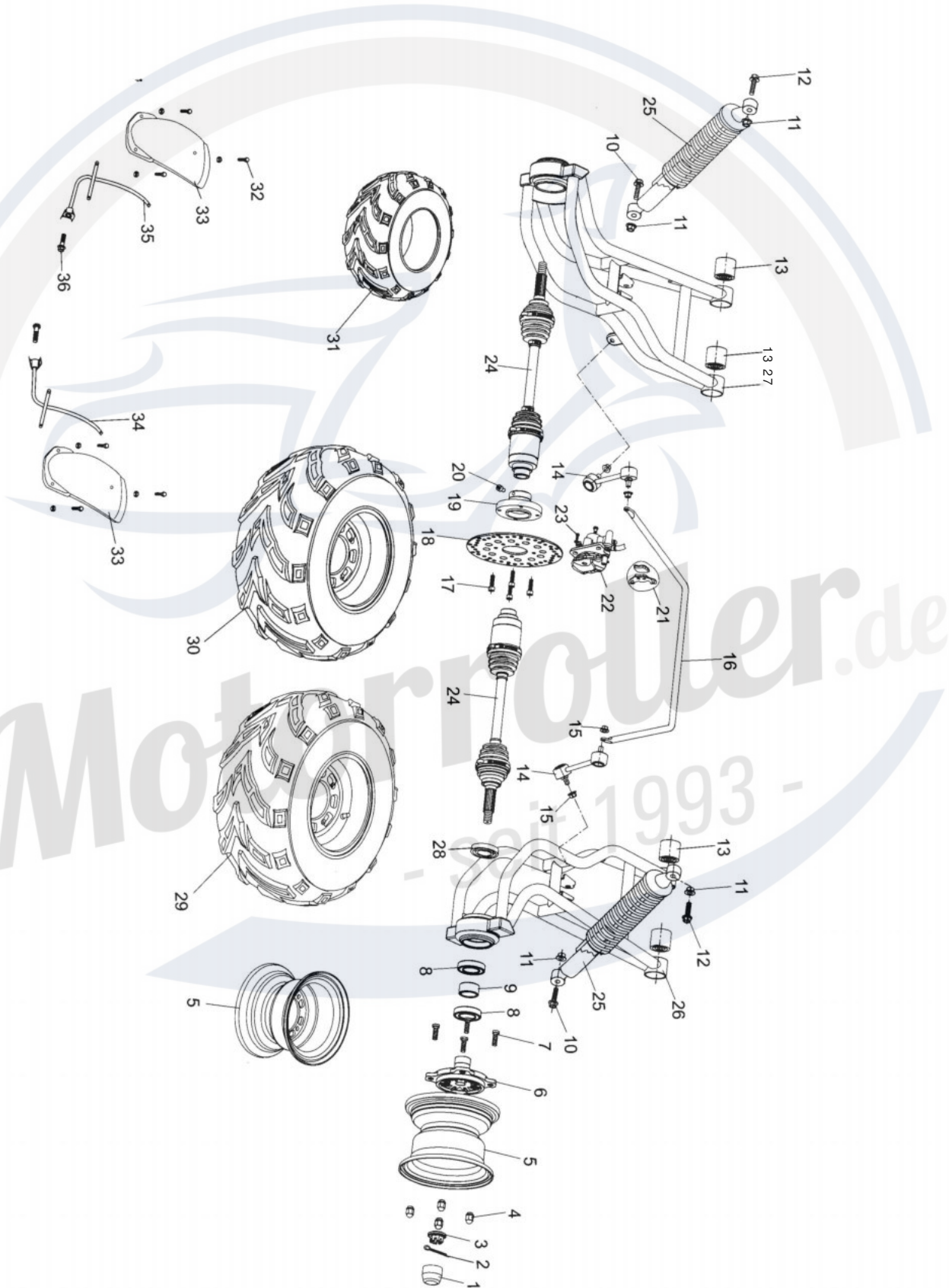
GEAR BOX ASSY.



GEAR BOX ASSY.				
REF NO.	PART NO.	DESCRIPTION	REGD NO.	
1	9.040.012	DUST SEAL 056 x 35 x 10	2	
2	9.030.011	BEARING RADIAL BALL E6007	2	
3	7.090.001	WAHSER 045x35x2	2	
4	7.090.002	KEY STOCK	2	
5	7.090.003	FINAL SHAFT	1	
6	7.090.004	FINAL GEAR	1	
7	9.030.002	BEARINGN RADIAL BALL E6204	2	
8	7.090.005	WAHSER 035x20.5x2	2	
9	7.090.006	COUNTER GEAR A	1	
10	7.090.007	COLLER	1	
11	7.090.008	COUNTER SHAFT	1	
12	7.090.009	COUNTER GEAR B	1	
13	9.030.005	BEARING RADIAL BALL E6005	1	
14	7.090.010	WASHER 035x20x5.5	1	
15	7.090.011	IN PUT GEAR A	1	
16	7.090.012	INTERNAL GEAR	1	
17	7.090.013	SLIDER COLLAR	1	
18	7.090.014	PIVOT ARM SLIDER	1	
19	7.090.015	IN PUT GEAR B	1	
20	7.090.016	WASHER 035x25x4	1	
21	7.090.017	BEARING RADIAL BALL E6204	1	
22	9.040.013	DUST SEAL 042x25x8	1	
23	7.090.018	LOCKING PIN IN/OUT 04x8	1	
24	7.090.019	PIVOT GEAR SHIFT	1	
25	8.030.041	L-SIDE CASE COVER	1	
26	7.090.020	SWING ARM CUSHION BUSH	6	
27	9.106.040	BOLT-WAHSER M6 x 40	14	
28	7.090.021	PIVOT SHAFT PIN	1	
29	9.500.408	COTTER PIN 04x8	1	
30	7.090.022	PIVOT ARM SHAFT	1	
31	7.090.023	GEAR CASE COVER GASKET	1	
32	9.108.020	BOLT-WASHER M8 x 20	4	
33	7.090.024	OUTER SHIFT BRACKET	1	
34	9.100.610	BOLT M6 x 10	4	
35	7.090.025	GASKET PLANE	1	
36	7.090.026	GASKET	1	
37	7.090.027	AIR TUBE	1	
38	7.090.028	TUBE CLIP	1	
39	7.090.029	AIR VENT	1	
40	7.090.030	COLLAR A	2	
41	7.090.031	DOWEL PIN 08x20	2	
42	9.101.025	BOLT M10 x 25	1	
43	7.090.032	SPRING	1	
44	7.090.033	STEEL BALL	1	
45	7.090.035	COLLAR B	1	
46	8.030.040	GEAR CASE	1	
47	9.700.008	WASHER 08	1	
48	9.100.812	BOLT M8 x 12	1	
49	9.040.014	DUST SEAL 022x10x7	1	

FIG.25

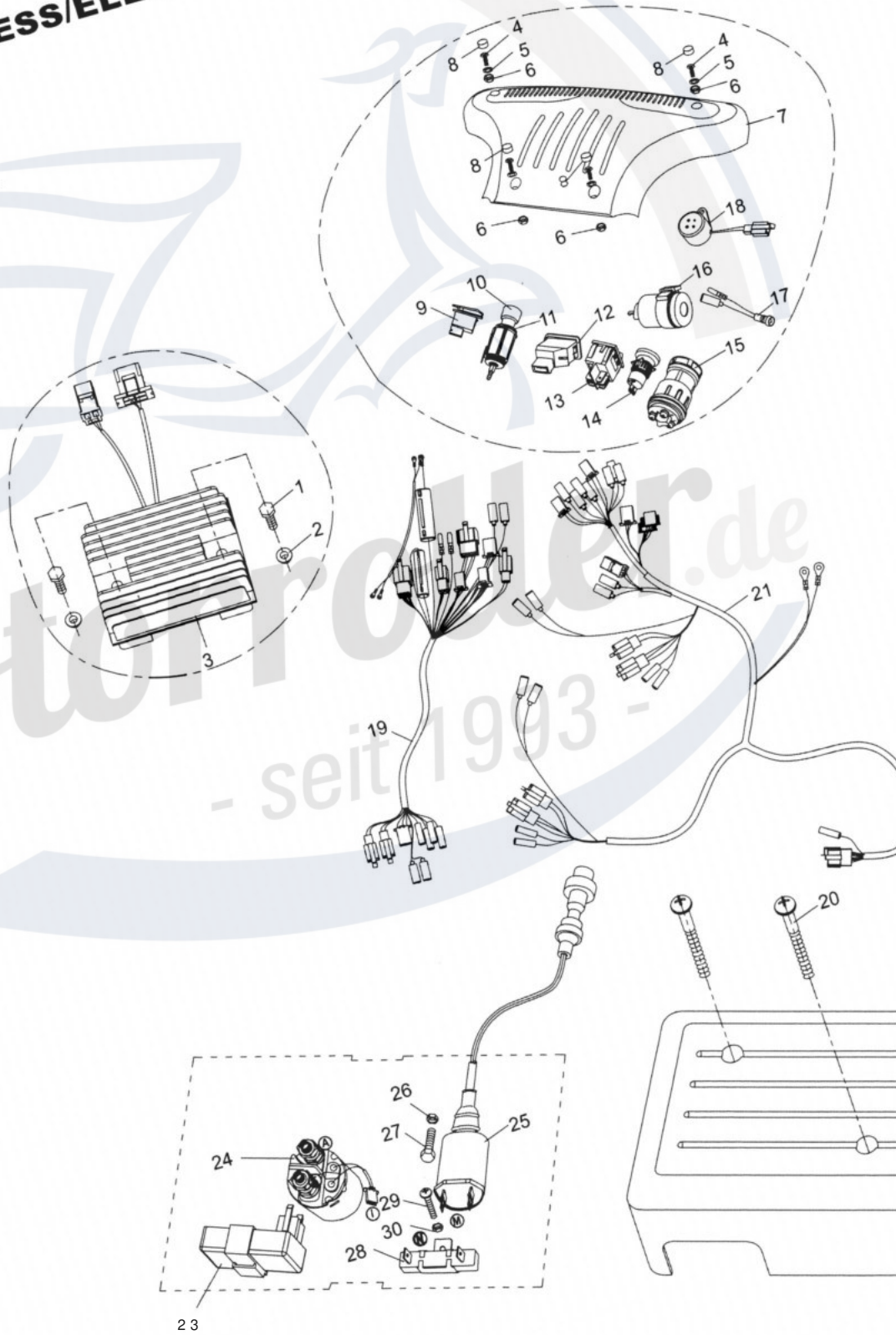
REAR SUSPENSION ASSY.



REAR SUSPENSION ASSY.				
REF NO.	PART NO.	DESCRIPTION	REGD NO.	
1	7.020.039	RR. HUB COVER	2	
2	9.500.430	COTTER PIN 04x30	2	
3	9.800.018	CASTLE NUT M18	2	
4	8.010.118	LUG NUT CAP M10	8	
5	6.000.143	RIM, RR.	2	
6	8.010.169	REAR WHEEL HUB	2	
7	9.710.031	TIRE BOLT M 10x 1.25x31	8	
8	9.030.007	BEARING 6007	4	
9	8.010.170	COLLAR	2	
10	9.112.055	BOLT-WASHER M 12x 1.25x55	2	
11	9.220.012	LOCKING FLANGE NUT M12 x 1.25x50	4	
12	9.112.050	BOLT-WASHER M 12x 1.25x50	2	
13	7.020.008	SWING ARM CUSHION BUSH	4	
14	6.000.242	BALANCE LEVER LINK ROD	2	
15	9.220.010	LOCKING FLANGE NUT M10 x 1.25	2	
16	6.000.243	BALANCE LEVER	1	
17	9.108.020	BOLT-WASHER M8x 20x1.25	4	
18	8.010.053	RR. BRAKE DISC.	1	
19	8.030.036	BRAKE DISC. BASE	1	
20	9.101.018	BOLT M 10x 1.5x18	1	
21	7.020.022	RR. BRAKE PAD SET	1	
22	6.000.229	CALIPER HYDRAULICAL BRAKE, RR.	1	
23	9.908.014	ALLEN HEAD BOLT M8x 1.25x16	2	
24	6.000.244	CV/SHAFT JOINT	2	
25	6.000.245	CUSHION ASSY., RR. L=480	2	
26	6.000.247	SWING ARM COMP. R.	1	
27	6.000.246	SWING ARM COMP. L.	1	
28	9.040.011	DUST SEAL 062x44x10	2	
29	6.000.148	REAR WHEEL ASSY., R.	1	
30	6.000.147	REAR WHEEL ASSY., L.	1	
31	7.020.052	TIRE, RR. 22x10-10	1	
32	9.906.016	BOLT-WASHER M 6x16	6	
33	7.010.059	FENDER, RR.	2	
34	6.000.068	REAR FENDER BRACKET, R.	1	
35	6.000.101	REAR FENDER BRACKET, L.	1	
36	9.108.045	BOLT-WASHER M8x 1.25x45	2	

FIG.26

WIRE HARNESS/ELECTRICAL



WARNING STICKERS



WARNING STICKERS				
REF NO.	PART NO.	DESCRIPTION	REGD NO.	
1	9.090.007	LABEL. PARKING BRAKE	1	
2	9.090.008	LABEL. REVERSE LEVER	1	
3	9.090.023	LABEL.GEAR CASE	1	
4	9.090.010	LABEL. NO LONG HAIR	1	
5	9.090.011	LABEL. WARNING	1	
6	9.090.012	LABEL. NO CLIMBING	1	
7	9.090.013	LABEL. WARNING	1	
8	9.090.014	LABEL. SEAT BELT	1	
9	9.090.024	LABEL. RADIATOR	1	
10	9.090.016	LABEL. TWISTER	3	
11	9.090.017	LABEL. WARNING	1	
12	9.090.025	LABEL.HAMMERHEAD 250	1	
13	9.090.026	LABEL.HAMMERHEAD 250 R.SIDE	1	
14	9.090.027	LABEL.HAMMERHEAD 250 L.SIDE	1	